

HYDRAULIC CRAWLER CRANE

KOBELCO

CKE2500

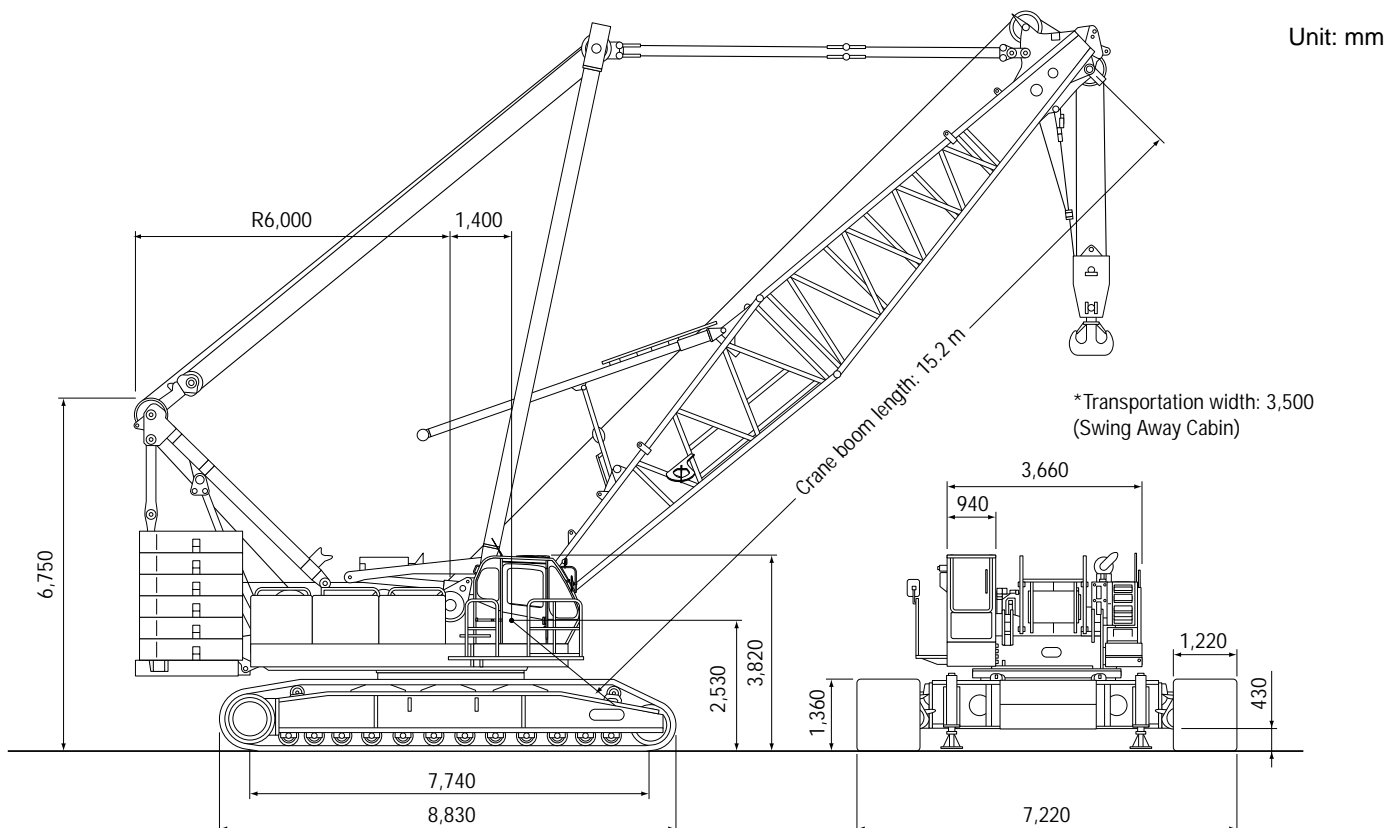
Max. Lifting Capacity: 250 t
Max. Boom Length: 91.4 m
Max. Jib Combination: 76.2 + 30.5 m
Max. Luffing Jib Combination: 51.8 + 61.0 m

S P E C I F I C A T I O N S

Main Boom	
Max. Lifting Capacity	250 t/4.0 m
Max. Length	91.4 m
Fixed Jib	
Max. Lifting Capacity	26.8 t/9.8 m
Max. Combination	76.2 m + 30.5 m
Luffing Jib	
Max. Lifting Capacity	70 t/9.8 m
Max. Combination	61.0m + 51.8 m, 51.8 m + 61.0 m
Luffing Angle	63° ~ 88°
Main & Aux. Winch	
Max. Line Speed	110 m/min (1st layer)
Rated Line Pull	132 kN (13.5 tf)
Max. Line Pull	245 kN (25 tf)
Wire Rope	25 mm
Wire Rope Length	480 m (Main) 385 m (Aux.)
Brake Type	Wet-type multiple disc brake
Free-Fall	Option

Working Speed	
Swing Speed	2.1 min ⁻¹ (rpm)
Travel Speed	1.1/0.7 km/h
Power Plant	
Model	Mitsubishi 6D24-TLU2D
Engine Output	235 kW/2,000 min ⁻¹ (rpm)
Fuel Tank Capacity	400 liters
Hydraulic System	
Main Pumps	4 variable displacement
Max. Pressure	30.9 MPa (315 kgf/cm ²)
Hydraulic Tank Capacity	550 liters
Self-Erection Device	
	Standard
Weight	
Operating Weight	Approx. 208 t
Counterweight	80.6 t (Upper), 20.0 t (Lower)
Transport Weight	44.9 t (Main machine)
Ground Pressure	95 kPa (0.97 kgf/cm ²)

GENERAL DIMENSIONS



KOBELCO CRANES CO., LTD.

MAIN BOOM LIFTING CAPACITY

Rated loads in metric tons for 360° working area (Counterweight: 80.6 t, Carbody weight: 20.0 t)

Crawlers fully extended

Boom length m (ft)	15.2	18.3	21.3	24.4	27.4	30.5	33.5	36.6	39.6	42.7	45.7	48.8	51.8	54.9	57.9	61.0	64.0	67.1	70.1	73.2	76.2	79.2	82.3	85.3	88.4	91.4				
	(50)	(60)	(70)	(80)	(90)	(100)	(110)	(120)	(130)	(140)	(150)	(160)	(170)	(180)	(190)	(200)	(210)	(220)	(230)	(240)	(250)	(260)	(270)	(280)	(290)	(300)				
4.0	4.0/250.0	4.7/208.5																												
5.0	199.7	199.7	5.2/188.4	5.6/176.4																										
6.0	167.7	167.7	167.7	166.7	6.1/159.9	6.6/148.1																								
7.0	144.2	144.2	144.2	144.2	143.2	141.3	7.1/139.4	7.5/130.3																						
8.0	127.2	127.2	127.2	126.2	126.2	126.2	124.4	124.3	8.0/122.9	8.5/109.2																				
9.0	112.2	112.2	113.2	113.2	112.2	111.2	111.0	110.8	109.0	105.9	9.0/103.0	9.5/95.1	9.9/88.6																	
10.0	101.3	101.2	101.2	101.2	101.2	100.2	100.0	99.8	97.3	94.7	92.3	90.0	87.6	10.4/82.7	10.9/77.1	11.4/72.0	11.8/67.6													
12.0	83.7	83.7	83.7	83.7	83.7	83.7	83.4	81.7	79.7	77.8	76.0	74.4	72.5	71.0	69.3	68.0	66.4	12.3/63.5	12.8/59.8	13.3/56.4	13.7/53.5									
14.0	69.7	69.7	69.7	69.7	69.7	69.7	69.7	68.8	67.3	65.8	64.3	63.0	61.6	60.4	59.0	57.9	56.6	55.4	54.3	53.2	52.2	14.2/50.4	14.7/47.7	15.2/45.2	15.7/38.9					
16.0	48/65.7	60.7	59.7	59.2	59.2	59.2	59.0	59.0	58.0	56.7	55.5	54.5	53.2	52.2	51.0	50.2	49.1	48.1	47.2	46.3	45.4	44.5	43.5	42.6	41.6	40.6	39.6			
18.0		17.5/54.1	50.7	50.7	50.7	50.7	50.3	50.3	50.0	49.7	48.6	47.8	46.7	45.8	44.8	44.1	43.1	42.2	41.4	40.7	39.9	39.1	38.2	37.5	36.8	36.1	35.4			
20.0			45.0	44.7	44.3	44.0	43.6	43.6	43.3	43.0	42.8	42.4	41.4	40.6	39.7	39.1	38.3	37.4	36.8	36.1	35.4	34.7	33.9	33.2	32.6	32.0	31.4			
22.0			20.1/44.7	39.5	39.1	38.8	38.4	38.4	38.1	37.8	37.5	37.3	37.0	36.4	35.5	35.0	34.2	33.5	32.9	32.2	31.7	31.0	30.2	29.6	28.9	28.2	27.6			
24.0				22.7/37.9	34.9	34.6	34.1	34.1	33.8	33.5	33.2	33.1	32.7	32.5	32.0	31.6	30.8	30.1	29.6	29.0	28.5	27.8	27.1	26.6	26.0	25.4	24.8			
26.0					25.4/32.5	31.1	30.7	30.7	30.3	30.0	29.7	29.6	29.2	29.0	28.7	28.6	27.9	27.3	26.7	26.2	25.8	25.1	24.5	24.0	23.3	22.5	21.9			
28.0						28.0/28.2	27.8	27.7	27.4	27.1	26.8	26.6	26.3	26.1	25.7	25.7	25.3	24.8	24.3	23.8	23.4	22.8	22.2	21.7	21.1	20.5	19.9			
30.0							25.3	25.3	24.9	24.6	24.3	24.1	23.8	23.6	23.2	23.1	22.8	22.5	22.2	21.7	21.3	20.8	20.2	19.7	19.1	18.6	18.0			
32.0							30.7/24.6	23.1	22.8	22.4	22.1	22.0	21.6	21.4	21.0	21.0	20.6	20.3	20.1	19.9	19.5	18.9	18.4	17.9	17.4	16.9	16.4			
34.0								33.3/22.0	20.9	20.6	20.3	20.1	19.7	19.5	19.1	19.1	18.7	18.4	18.2	18.0	17.8	17.3	16.8	16.4	15.8	15.3	14.8			
36.0									35.9/19.4	19.0	18.7	18.5	18.1	17.9	17.5	17.4	17.1	16.8	16.6	16.4	16.2	15.9	15.3	14.9	14.4	13.9	13.4			
38.0										17.6	17.2	17.1	16.7	16.4	16.1	16.0	15.6	15.3	15.1	14.9	14.7	14.5	14.0	13.7	13.2	12.7	12.2			
40.0											38.6/17.2	16.0	15.8	15.4	15.2	14.8	14.7	14.3	14.0	13.8	13.6	13.4	13.2	12.8	12.5	12.0	11.5			
42.0												41.2/15.3	14.7	14.3	14.0	13.6	13.5	13.2	12.9	12.6	12.5	12.3	12.0	11.6	11.4	11.0	10.5			
44.0													43.8/13.7	13.2	13.0	12.6	12.5	12.1	11.8	11.6	11.4	11.2	10.9	10.6	10.4	10.0	9.6			
46.0														12.3	12.1	11.7	11.6	11.2	10.9	10.7	10.5	10.3	10.0	9.6	9.4	9.1	8.7			
48.0															46.5/12.1	11.2	10.8	10.7	10.3	10.0	9.8	9.6	9.4	9.1	8.8	8.6	8.2	7.9		
50.0																49.1/10.8	10.1	9.9	9.6	9.3	9.0	8.8	8.6	8.3	8.0	7.8	7.4	7.1		
52.0																	51.8/9.5	9.2	8.9	8.6	8.3	8.1	7.9	7.6	7.2	7.0	6.7	6.4		
54.0																		8.6	8.2	7.9	7.6	7.4	7.2	6.9	6.6	6.4	6.0	5.7		
56.0																			54.4/8.5	7.6	7.3	7.0	6.8	6.6	6.3	6.0	5.7	5.1		
58.0																				57.0/7.4	6.8	6.5	6.3	6.0	5.7	5.4	4.8	4.6		
60.0																					59.7/6.3	6.0	5.8	5.5	5.2	4.9	4.7	4.3	4.0	
62.0																						62.3/5.4	5.5	5.3	5.0	4.7	4.4	4.2	3.8	3.5
64.0																							65.0/4.6	4.8	4.6	4.3	3.9	3.7	3.4	3.1
66.0																								67.6/3.8	4.1	3.8	3.5	3.3	2.9	2.6
68.0																									3.5	3.1	2.9	2.5	2.2	
70.0																									3.1	2.7	2.5	2.2	1.9	
72.0																										70.2/3.1	2.4	2.2	1.8	1.5
74.0																											72.9/2.2	1.9	1.5	1.2
76.0																												75.5/1.6	1.2	76.0/0.9
78.0																													0.9	
80.0																													78.2/0.9	

- Note: 1. Rating according to DIN 15018-3 and prEN 13300.
- 2. Rating shown in [] are determined by the strength of the boom or other structural components.
- 3. Instruction in the operator's manual must be strictly observed when operating the machine.

FIXED JIB LIFTING CAPACITY

(counterweight: 80.6 t, carbodyweight: 20.0 t, without main hook)

Jib Offset Angle: 10°

Boom length	27.4 m		51.8 m		76.2 m		
	Jib length	12.2 m	30.5 m	12.2 m	30.5 m	12.2 m	30.5 m
9.0 m		9.8 m/26.8					
10.0 m		26.8					
12.0 m		25.5		13.6 m/26.8			
14.0 m		24.3		26.8			
16.0 m		23.0	16.0 m/6.9	25.9		17.4 m/26.8	
18.0 m		21.8	6.5	25.1	19.8 m/6.9	26.7	
20.0 m		20.7	6.2	24.4	6.9	26.1	
22.0 m		19.8	5.9	23.5	6.6	25.5	23.6 m/6.8
24.0 m		18.9	5.6	22.8	6.3	24.9	6.8
26.0 m		18.1	5.3	22.1	6.1	24.4	6.6
28.0 m		17.3	5.1	21.5	5.9	23.9	6.4
30.0 m		16.7	4.9	20.9	5.7	21.7	6.2
34.0 m		15.5	4.5	19.7	5.3	18.3	5.9
38.0 m		37.1 m/14.5	4.1	17.7	5.0	15.5	5.6
42.0 m			3.8	15.2	4.7	13.0	5.3
46.0 m			3.5	13.1	4.4	10.9	5.0
50.0 m			3.2	11.4	4.1	9.2	4.8
54.0 m			3.0	10.0	3.9	7.8	4.5
58.0 m			54.6 m/3.0	8.8	3.7	6.5	4.3
62.0 m				58.3 m/8.7	3.5	5.5	4.1
66.0 m					3.3	4.6	3.9
70.0 m					3.2	3.7	3.8
74.0 m					3.0	3.0	3.6
78.0 m					75.7 m/3.0	2.4	3.5
82.0 m						79.3 m/2.2	3.0
86.0 m							2.5
90.0 m							2.0
94.0 m							1.5
98.0 m							96.8 m/1.2

Jib Offset Angle: 30°

Boom length	27.4 m		51.8 m		76.2 m		
	Jib length	12.2 m	30.5 m	12.2 m	30.5 m	12.2 m	30.5 m
12.0 m		13.5 m/19.5					
14.0 m		19.3					
16.0 m		18.7		17.3 m/19.4			
18.0 m		17.9		19.3			
20.0 m		16.8		18.9		21.1 m/19.3	
22.0 m		15.9		18.5		19.2	
24.0 m		15.2	25.3 m/4.2	18.0		18.9	
26.0 m		14.5	4.1	17.3		18.7	
28.0 m		13.9	4.0	16.7	29.1 m/4.2	18.4	
30.0 m		13.4	3.8	16.2	4.1	18.0	32.9 m/4.1
34.0 m		12.7	3.5	15.2	3.9	17.0	4.1
38.0 m		37.8 m/12.4	3.3	14.4	3.7	16.2	3.9
42.0 m			3.1	13.7	3.5	13.6	3.7
46.0 m			2.9	13.2	3.3	11.5	3.6
50.0 m			2.8	11.7	3.2	9.7	3.4
54.0 m							

LUFFING JIB LIFTING CAPACITY (Boom Angle Fixed Type 88° and 83°)

Boom length	21.3 m												24.4 m																			
	24.4 m		30.5 m		36.6 m		42.7 m		51.8 m		61.0 m		24.4 m		30.5 m		36.6 m		42.7 m		51.8 m		61.0 m									
Boom Angle	88°	83°	88°	83°	88°	83°	88°	83°	88°	83°	88°	83°	88°	83°	88°	83°	88°	83°	88°	83°	88°	83°	88°	83°	88°	83°	88°	83°	88°	83°		
12.0 m	61.4		61.4												61.4		61.4															
14.0 m	55.1		55.1		40.5									55.4		55.4		40.5														
16.0 m	47.5	53.8	47.8		40.2		29.6							47.9	53.2	48.2		40.4			29.6											
18.0 m	40.0	47.3	40.3	47.4	37.2		27.7		17.7					40.3	46.8	40.6	46.4	37.3		27.7		17.8										
20.0 m	34.4	39.9	34.7	40.7	34.6	37.1	25.6		16.3		9.8			34.6	40.7	34.9	41.2	34.7	37.6	25.7		16.4			9.8							
22.0 m	30.0	34.4	30.3	35.0	31.2	34.6	23.8	24.6	15.1		9.1			30.2	35.3	30.5	35.9	31.4	35.0	23.9	24.9	15.2			9.1							
24.0 m	26.5	30.0	26.8	30.6	27.6	31.2	22.2	23.0	14.1	15.1	8.4			26.6	30.7	26.9	31.3	27.7	31.9	22.3	23.2	14.1			8.4							
26.0 m		26.5	23.9	27.1	24.6	27.6	20.9	21.5	13.1	14.0	7.8				27.1	24.0	27.7	24.7	28.1	20.9	21.8	13.1	14.2	7.8								
28.0 m		22.9	21.5	24.2	22.2	24.6	19.6	20.2	12.3	13.1	7.2	7.8			24.0	21.6	24.7	22.3	25.1	19.7	20.5	12.3	13.2	7.2	7.8							
30.0 m			19.5	21.8	20.1	22.2	18.5	19.1	11.5	12.3	6.7	7.2				19.5	22.2	20.2	22.6	18.6	19.3	11.5	12.4	6.7	7.3							
34.0 m				17.3	16.7	18.3	16.6	17.1	10.2	10.8	5.5	6.2					18.1	16.8	18.6	16.7	17.3	10.2	10.9	5.5	6.3							
38.0 m					13.1	15.4	14.1	15.5	9.1	9.6	4.2	4.8						13.3	15.6	14.1	15.7	9.1	9.7	4.2	4.9							
42.0 m							11.9	13.3	8.1	8.6	3.2	3.7								12.1	13.5	8.1	8.7	3.2	3.8							
46.0 m								11.0	7.4	7.8	2.3	2.7									11.5	7.4	7.8	2.3	2.8							
50.0 m									6.7	7.0		1.8										6.7	7.1		1.9							
54.0 m											6.5												6.5									

Boom length	30.5 m												36.6 m																			
	24.4 m		30.5 m		36.6 m		42.7 m		51.8 m		61.0 m		24.4 m		30.5 m		36.6 m		42.7 m		51.8 m		61.0 m									
Boom Angle	88°	83°	88°	83°	88°	83°	88°	83°	88°	83°	88°	83°	88°	83°	88°	83°	88°	83°	88°	83°	88°	83°	88°	83°	88°	83°	88°	83°	88°	83°		
12.0 m	61.4														53.5																	
14.0 m	56.1		53.5		40.5										53.5		53.5		40.5													
16.0 m	48.8	51.8	49.1		40.5		29.6							49.6	49.4	49.2		40.5		29.7												
18.0 m	40.9	46.2	41.2	44.3	37.6		27.9		17.9					41.5	44.1	41.8		37.8		28.1		18.0										
20.0 m	35.1	41.6	35.3	40.0	34.9	38.5	25.8		16.5					35.5	39.8	35.8	38.2	35.1		26.0		16.6										
22.0 m	30.5	36.7	30.8	36.4	31.8	35.0	24.0	25.6	15.3		9.1			30.8	36.3	31.1	34.8	32.2	33.5	24.1		15.3		9.2								
24.0 m	26.9	32.2	27.2	32.8	28.0	32.1	22.4	23.8	14.2		8.5			27.1	32.9	27.4	31.9	28.3	30.7	22.5	24.4	14.2		8.5								
26.0 m	23.3	28.2	24.2	28.8	25.0	29.4	21.0	22.3	13.2	14.6	7.8			23.9	29.5	24.4	29.5	25.2	28.3	21.1	22.8	13.3	14.9	7.9								
28.0 m		25.0	21.7	25.6	22.4	26.1	19.7	20.9	12.3	13.6	7.3	8.1			26.0	21.9	26.7	22.6	26.3	19.8	21.3	12.4	13.9	7.3								
30.0 m			19.6	23.0	20.3	23.4	18.6	19.7	11.5	12.7	6.8	7.5			23.1	19.7	23.8	20.4	24.3	18.7	20.1	11.6	12.9	6.8	7.7							
34.0 m				18.7	16.9	19.2	16.7	17.6	10.2	11.1	5.6	6.5				19.4	17.0	19.8	16.7	17.9	10.2	11.4	5.6	6.6								
38.0 m					13.7	16.1	14.2	15.9	9.1	9.9	4.3	5.1					14.1		16.5	14.2	16.2	9.1	10.0	4.3	5.4							
42.0 m							12.1	13.9	8.2	8.8	3.2	3.9						13.9	12.1	14.2	8.2	9.0	3.2	4.1								
46.0 m								11.9	7.4	7.9	2.3	2.9								12.2	7.4	8.0	2.3	3.1								
50.0 m									6.7	7.2		2.0									6.7	7.3		2.2								
54.0 m											6.5											6.6										

Boom length	42.7 m												48.8 m																				
	24.4 m		30.5 m		36.6 m		42.7 m		51.8 m		61.0 m		24.4 m		30.5 m		36.6 m		42.7 m		51.8 m		61.0 m										
Boom Angle	88°	83°	88°	83°	88°	83°	88°	83°	88°	83°	88°	83°	88°	83°	88°	83°	88°	83°	88°	83°	88°	83°	88°	83°	88°	83°	88°	83°	88°	83°			
12.0 m	53.5														40.5																		
14.0 m	53.5		52.0												40.5		40.5																
16.0 m	49.4		47.3		39.9		29.7								40.5		40.5		37.2		29.7												
18.0 m	42.2	42.0	42.4		38.1		28.3								40.5	39.9	40.5		36.9		28.5												
20.0 m	36.0	37.9	36.2	36.4	35.3		26.1		16.7						36.5	36.1	36.7	34.6	35.5		26.3												
22.0 m	31.2	34.6	31.5	33.2	32.5	31.9	24.3		15.4		9.3				31.5	33.0	31.8	31.6	32.5	30.4	24.4		15.5		9.3								
24.0 m	27.4	31.8	27.7	30.4	28.6	29.3	22.6	25.0	14.3		8.6				27.6	30.3	27.9	29.0	28.9	27.9	22.7	25.7	14.4		8.6								
26.0 m	24.2	29.4	24.6	28.1	25.4	27.0	21.2	23.3	13.3		7.9				24.4	28.1	24.8	26.8	25.7	25.7	21.3	23.9	13.4		7.7								
28.0 m		26.8	22.0	26.1	22.8	25.1	19.9	21.8	12.4	14.2	7.4					26.1	22.2	24.9	23.0	23.9	20.0	22.3	12.5	14.6	6.6								
30.0 m			24.3	19.8	24.4	20.6	23.4	18.7	20.5	11.6	13.2	6.8	7.9			24.2	19.9	23.2	20.8	22.2	18.8	20.9	11.7	13.6	5.7								
34.0 m					20.0	17.1	20.5	16.8	18.2	10.3	11.6	5.7	6.8					20.5	17.2	19.5	16.8	18.6	10.3	11.8	4.1	7.0							
38.0 m						14.3	17.0	14.3	16.4	9.1	10.2	4.4	5.6					16.9	14.4	17.4	14.3	16.5	9.2	10.4	2.7	5.8							
42.0 m							14.3	12.2	14.6	8.2	9.1	3.3	4.3							14.7	12.2	14.8	8.2	9.3		4.5							
46.0 m									12.5	7.4	8.2	2.3	3.2									12.8	7.4	8.3		3.4							
50.0 m										6.7	7.4		2.3										6.7	7.5		2.4							
54.0 m											6.1	6.7											6.1	6.8									
58.0 m																								6.2									

Boom length	54.9 m												61.0 m											
	24.4 m		30.5 m		36.6 m		42.7 m		51.8 m		30.5 m		36.6 m		42.7 m		51.8 m							
Boom Angle	88°	83°	88°	83°	88°	83°	88°	83°	88°	83°	88°	83°	88°	83°	88°	83°	88°	83°						
14.0 m	40.5		40.5								33.5													
16.0 m	40.2		39.7		32.2						30.2													
18.0 m	36.7		36.2		31.6		26.8				27.5		26.8		25.4									
20.0 m	33.8	34.3	33.3		30.9		26.5		16.9															

BOOM & JIB ARRANGEMENT

CRANE BOOM ARRANGEMENT

Boom length m (ft)	Boom arrangement
15.2 (50)	Base-Tip
18.3 (60)	Base-A-Tip
21.3 (70)	Base-A-A-Tip, Base-B-Tip
24.4 (80)	Base-A-B-Tip
27.4 (90)	Base-A-A-B-Tip, Base-D-Tip, Base-B-B-Tip
30.5 (100)	Base-A-B-B-Tip, Base-A-D-Tip
33.5 (110)	Base-A-A-B-B-Tip, Base-A-A-D-Tip, Base-B-D-Tip
36.6 (120)	Base-A-B-D-Tip
39.6 (130)	Base-A-A-B-D-Tip, Base-D-D-Tip, Base-B-B-D-Tip
42.7 (140)	Base-A-B-B-D-Tip, Base-A-D-D-Tip
45.7 (150)	Base-A-A-B-B-D-Tip, Base-A-A-D-D-Tip, Base-B-D-D-Tip
48.8 (160)	Base-A-B-D-D-Tip
51.8 (170)	Base-A-A-B-D-D-Tip, Base-B-B-D-D-Tip, Base-D-D-D-Tip
54.9 (180)	Base-A-B-B-D-D-Tip, Base-A-D-D-D-Tip
57.9 (190)	Base-A-A-B-B-D-D-Tip, Base-A-A-D-D-D-Tip, Base-B-D-D-D-Tip
61.0 (200)	Base-A-B-D-D-D-Tip
64.0 (210)	Base-A-A-B-D-D-D-Tip, Base-B-B-D-D-D-Tip, Base-D-D-D-D-Tip
67.1 (220)	Base-A-B-B-D-D-D-Tip, Base-A-D-D-D-D-Tip
70.1 (230)	Base-A-A-B-B-D-D-D-Tip, Base-A-A-D-D-D-D-Tip, Base-B-D-D-D-D-Tip
73.2 (240)	Base-A-B-D-D-D-D-Tip
76.2 (250)	Base-A-A-B-B-D-D-D-D-Tip, Base-B-B-D-D-D-D-Tip, Base-D-D-D-D-D-Tip
79.3 (260)	Base-A-B-B-D-D-D-D-Tip, Base-A-D-D-D-D-D-Tip
82.3 (270)	Base-A-A-B-B-D-D-D-D-Tip, Base-A-A-D-D-D-D-D-Tip, Base-B-D-D-D-D-D-Tip
85.3 (280)	Base-A-B-D-D-D-D-D-Tip
88.4 (290)	Base-A-A-B-B-D-D-D-D-D-Tip, Base-B-B-D-D-D-D-D-Tip
91.4 (300)	Base-A-B-B-D-D-D-D-D-Tip

Base Boom Length and Boom Tip Length
 Base = 7.8 m (25'), Tip = 8.3 m (27')
 Insert Boom
 A = 3.0 m (10'), B = 6.1 m (20'), D = 12.2 m (40')

FIXED JIB ARRANGEMENT

Jib length m (ft)	Jib arrangement
12.2 (40)	Base-A-Tip
18.3 (60)	Base-A-B-Tip
24.4 (80)	Base-A-B-B-Tip
30.5 (100)	Base-A-B-B-B-Tip

Base Jib Length and Jib Tip Length
 Base = 7.8 m (25'), Tip = 8.3 m (27')
 Insert Jib
 A = 3.0 m (10'), B = 6.1 m (20')

LUFFING BOOM ARRANGEMENT

Boom length m (ft)	Boom arrangement
21.3 (70)	Base-A-B-Cap
24.4 (80)	Base-A-A-B-Cap, Base-B-B-Cap, Base-D-Cap
27.4 (90)	Base-A-B-B-Cap, Base-A-D-Cap
30.5 (100)	Base-A-A-B-B-Cap, Base-A-A-D-Cap, Base-B-D-Cap
33.5 (110)	Base-A-B-D-Cap
36.6 (120)	Base-A-A-B-D-Cap, Base-B-B-D-Cap, Base-D-D-Cap
39.6 (130)	Base-A-B-B-D-Cap, Base-A-D-D-Cap
42.7 (140)	Base-A-A-B-B-D-Cap, Base-A-A-D-D-Cap, Base-B-D-D-Cap
45.7 (150)	Base-A-B-D-D-Cap
48.8 (160)	Base-A-A-B-B-D-D-Cap, Base-B-B-D-D-Cap, Base-D-D-D-Cap
51.8 (170)	Base-A-B-B-B-D-D-Cap, Base-A-D-D-D-Cap
54.9 (180)	Base-A-A-B-B-B-D-D-Cap, Base-B-B-D-D-D-Cap, Base-A-A-D-D-D-Cap
57.9 (190)	Base-A-B-B-D-D-D-Cap
61.0 (200)	Base-A-A-B-B-D-D-D-Cap, Base-B-B-D-D-D-Cap

Base Boom Length and Luffing Boom Cap Length
 Base = 7.8 m (25'), Cap = 8.3 m (27')
 Insert Luffing Boom
 A = 3.0 m (10'), B = 6.1 m (20'), D = 12.2 m (40')

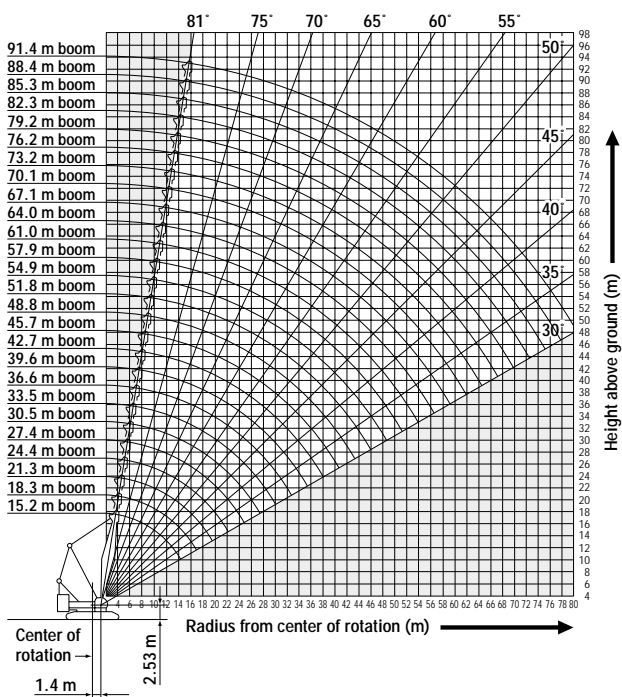
LUFFING JIB ARRANGEMENT

Jib length m (ft)	Jib arrangement
21.3 (70)	Base-A-B-Tip
24.4 (80)	Base-A-A-B-Tip, Base-B-B-Tip, Base-D-Tip
27.4 (90)	Base-A-B-B-Tip, Base-A-D-Tip
30.5 (100)	Base-A-A-B-B-Tip, Base-B-D-Tip, Base-A-A-D-Tip
33.5 (110)	Base-A-B-D-Tip
36.6 (120)	Base-A-A-B-D-Tip, Base-B-B-D-Tip, Base-D-D-Tip
39.6 (130)	Base-A-B-B-D-Tip, Base-A-D-D-Tip
42.7 (140)	Base-A-A-B-B-D-Tip, Base-B-B-D-Tip, Base-A-A-D-D-Tip
45.7 (150)	Base-A-B-D-D-Tip
48.8 (160)	Base-A-A-B-B-D-D-Tip, Base-B-B-B-D-D-Tip
51.8 (170)	Base-A-B-B-B-D-D-Tip
54.9 (180)	Base-A-A-B-B-B-D-D-Tip, Base-A-A-D-D-D-Tip, Base-B-B-D-D-D-Tip
57.9 (190)	Base-A-B-B-B-D-D-D-Tip
61.0 (200)	Base-A-A-B-B-B-D-D-D-Tip

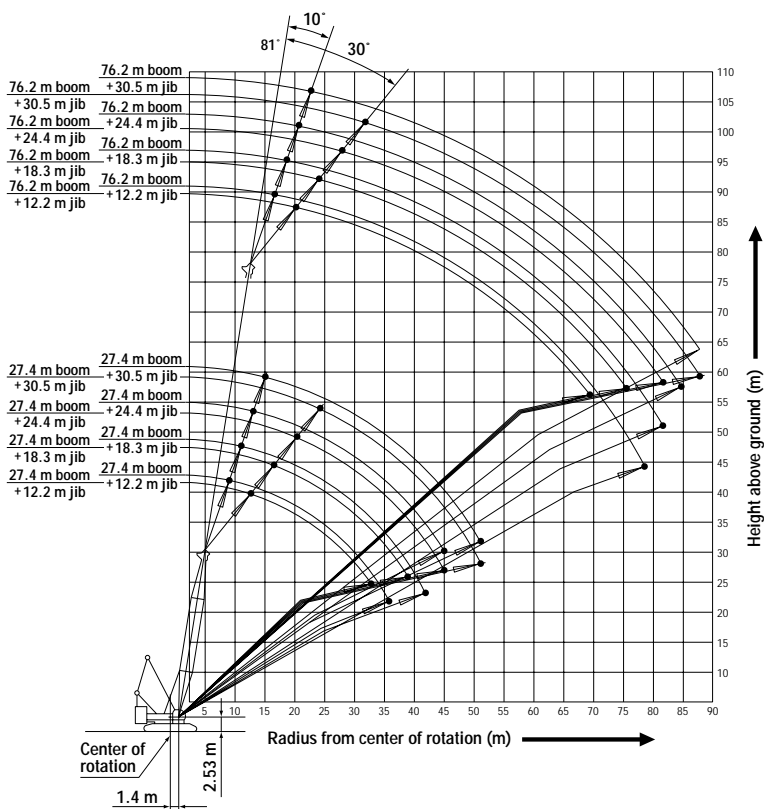
Base Luffing Jib Length and Luffing Jib Tip Length
 Base = 7.8 m (25'), Tip = 8.3 m (27')
 Insert Luffing Jib
 A = 3.0 m (10'), B = 6.1 m (20'), D = 12.2 m (40')

WORKING RADIUS

CRANE BOOM

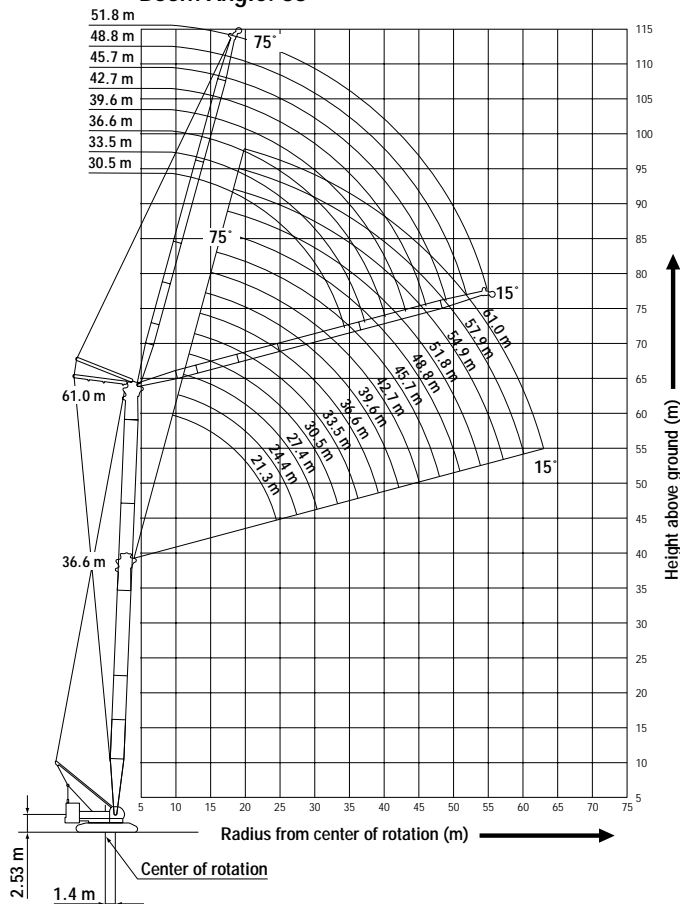


FIXED JIB (Jib Offset Angle: 10°, 30°)

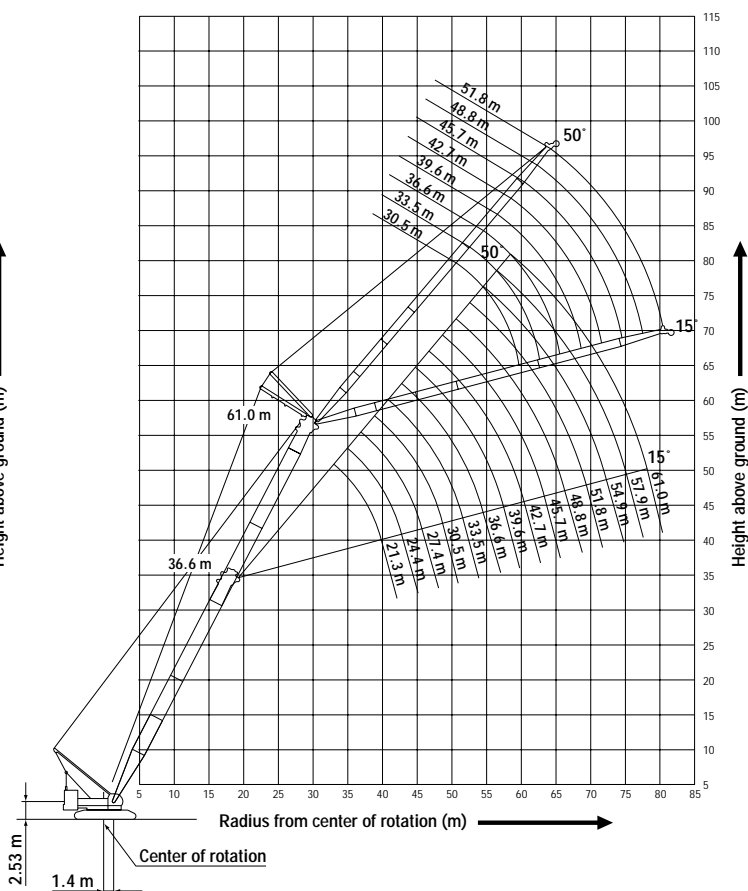


LUFFING JIB

Boom Angle: 88°



Boom Angle: 63°

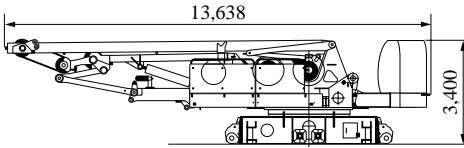


SPECIFICATIONS OF PARTS AND ATTACHMENTS

Dimensions: mm Weight: kg

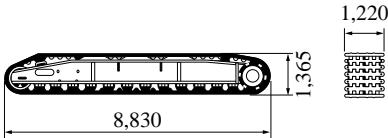
Base Machine

Weight: 44,900 kg Width: 3,500 mm



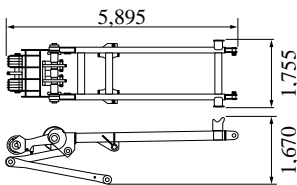
Crawler

Weight: 23,500 kg



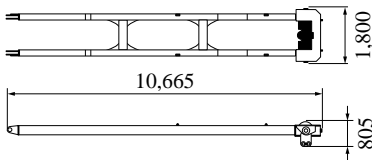
Gantry

Weight: 2,920 kg



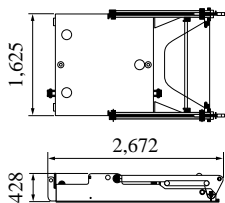
Mast

Weight: 2,970 kg



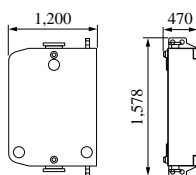
Carbodyweight A

Weight: 4,375 kg x 2 pieces



Carbodyweight B

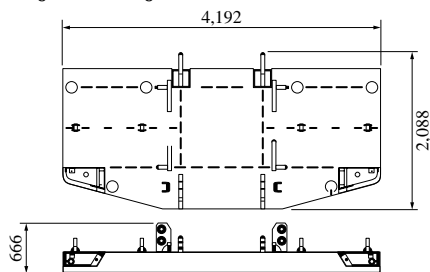
Weight: 5,625 kg x 2 pieces



Counterweight Type 1

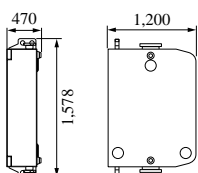
Counterweight A

Weight: 12,500 kg



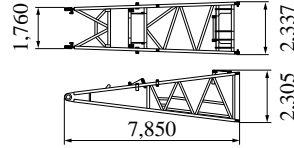
Counterweight B, C

Weight: 5,625 kg x 6 x 2 pieces



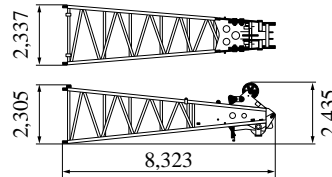
Boom Base

Weight: 3,250 kg

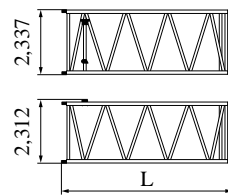


Boom Top

Weight: 3,138 kg (with guy cables)



Insert Boom

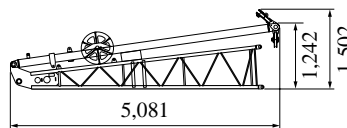


	L (mm)	Weight (kg)*
3.0m	3,175	776
6.1m	6,223	1,292
12.2m	12,320	2,243

*with guy cables

Jib Base with Strut (For Crane)

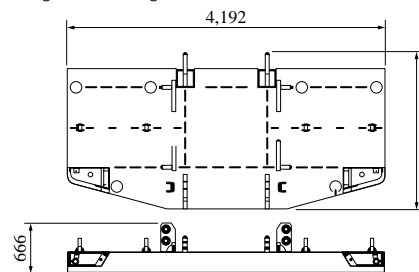
Weight: 510 kg Width: 1,040 mm



Counterweight Type 2

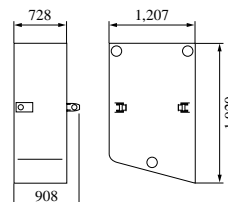
Counterweight A

Weight: 12,506 kg



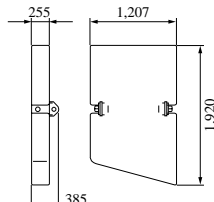
Counterweight B, C

Weight: 10,000 kg x 3 x 2 pieces



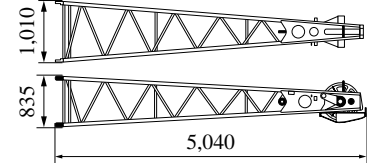
Counterweight D, E

Weight: 3,750 kg x 2 pieces



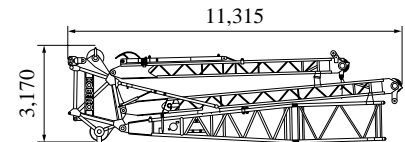
Jib Top (For Crane)

Weight: 315 kg



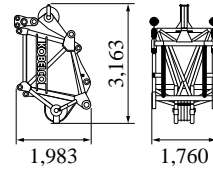
Travel Kit Assembly

Weight: 6,000 kg



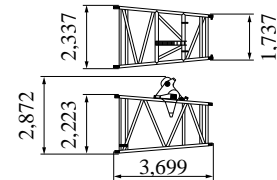
Luffing Main Boom Top

Weight: 1,890 kg



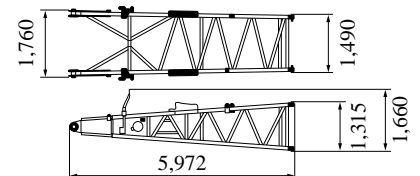
Luffing Taper Insert Boom

Weight: 1,030 kg



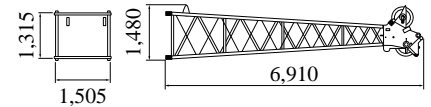
Luffing Jib Base

Weight: 1,140 kg



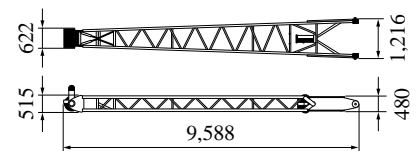
Luffing Jib Top

Weight: 1,170 kg



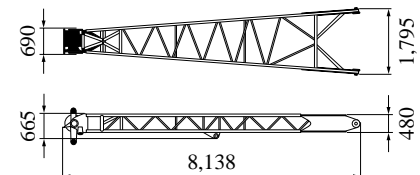
Front Strut (Luffing Jib)

Weight: 1,160 kg



Rear Strut (Luffing Jib)

Weight: 1,130 kg



TRANSPORTATION PLAN

(Main Boom 61.0 m + Luffing Jib 51.8 m, Counterweight: Type 1)

Configuration	Description	Total Weight
<p>No. 1 Low Loader</p>	<p>Base Machine = Including 3rd winch Translifter All wire ropes</p>	<p>44.90 ton</p>
<p>No. 2 & No. 3 Tent Side Truck</p>	<p>Crawler =</p>	<p>23.50 ton</p>
<p>No. 4 & No. 5 Flat Bed Trailer</p>	<p>Counterweight (4 x 5.63 ton) = 40 ft Main Boom x 1 = 40 ft Luffing Jib x 1 = Total =</p>	<p>22.52 ton 2.24 ton 0.96 ton 25.72 ton</p>
<p>No. 6 Flat Bed Trailer</p>	<p>Counterweight A x 1 = 40 ft Main Boom x 1 = 20 ft Luffing Jib (2 x 0.54 ton) = Carbodyweight A (2 x 4.38 ton) = Total =</p>	<p>12.89 ton 2.24 ton 1.08 ton 8.76 ton 24.97 ton</p>
<p>No. 7 Tent Side Truck</p>	<p>10 ft Main Boom (2 x 0.74 ton) = 20 ft Main Boom x 1 = 10 ft Luffing Jib Insert x 1 = Total =</p>	<p>1.48 ton 1.29 ton 0.31 ton 3.08 ton</p>
<p>No. 8 Tent Side Truck</p>	<p>Luffing Jib Top x 1 = Luffing Taper x 1 = Counterweight (4 x 5.63 ton) = Total =</p>	<p>1.17 ton 1.03 ton 22.52 ton 24.72 ton</p>
<p>No. 9 Semi Loader</p>	<p>Travel Kit = Carbodyweight B (2 x 5.63 ton) = Total =</p>	<p>6.00 ton 11.26 ton 17.26 ton</p>

Note: This transport plan depends on your specification of trailer and the areas or countries where you transport.

OTHER ATTACHMENTS

CKE2500

Attachments	Weight	Dimensions (L x W x H)
Boom backstop	680 kg	7,055 mm x 997 mm
3.0 m (10 ft) Insert jib	110 kg	3,128 mm x 1,020 mm x 840 mm
6.1 m (20 ft) Insert jib	190 kg	6,175 mm x 1,020 mm x 840 mm
3.0 m (10 ft) Insert Luffing jib	310 kg	3,165 mm x 1,490 mm x 1,290 mm
6.1 m (20 ft) Insert Luffing jib	540 kg	6,210 mm x 1,490 mm x 1,290 mm
12.2 m (40 ft) Insert Luffing jib	960 kg	12,305 mm x 1,490 mm x 1,290 mm
Luffing jib backstop	180 kg	3,575 mm x 346 mm x 226 mm
Strut backstop (luffing jib)	180 kg	3,575 mm x 268 mm
Auxiliary sheave	276 kg	1,080 mm x 930 mm
Auxiliary sheave (luffing jib)	380 kg	1,012 mm x 893 mm x 914 mm
Lower spreader	700 kg	1,350 mm x 1,305 mm x 500 mm
Luffing jib drum	1,470 kg	1,696 mm x 1,040 mm x 1,063 mm
Ball hook	450 kg	1,200 mm x 380 mm dia.
35-ton hook	900 kg	1,575 mm x 365 mm x 700 mm
70-ton hook	1,200 kg	1,825 mm x 384 mm x 700 mm
100-ton hook	1,800 kg	2,025 mm x 555 mm x 700 mm
150-ton hook	2,300 kg	2,665 mm x 715 mm x 700 mm
250-ton hook	4,200 kg	2,308 mm x 1,616 mm x 720 mm

Note: Due to our policy of continual product improvements all designs and specifications are subject to change without advance notice.



KOBELCO CRANES CO., LTD.

17-1, Higashigotanda 2-chome, Shinagawa-ku, Tokyo 141-8626 JAPAN

Tel: ++81 (0) 3-5789-2130 Fax: ++81 (0) 3-5789-3372