

KOBELCO

Hydraulic Crawler Crane

CK850G₋₂

Max. Lifting Capacity : 85 US Tons

Max. Crane Boom Length : 200 ft

Max. Fixed Jib Combination : 180 ft + 60 ft



CK850G-2

CONTENTS

2 SPECIFICATIONS

6 G-MODE

7 LMI

8 WINCH PERFORMANCE

9 GENERAL DIMENSIONS

10 DIMENSIONS & WEIGHT

13 TRANSPORTATION PLAN

14 SELF ASSEMBLY PROCEDURE

15 COUNTERWEIGHT SELF-REMOVAL DEVICE

16 BOOM & JIB ARRANGEMENTS

17 WORKING RANGES

20 SUPPLEMENTAL DATA

21 LIFTING CAPACITY

29 CLAMSHELL DATA

31 BARGE DATA

CK850G-2

SPECIFICATIONS

General Description



Type	Crawler mounted, Lattice boom, Hydraulic controlled
Maximum lift capacity	170,000 lbs (77,110 kg) @ 11' operating radius (40' boom)
Basic boom length	40' (12.2 m)
Maximum boom length	200' (61.0 m)
Basic boom & jib length	80' + 30' (24.4 m + 9.1 m)
Maximum boom & jib length	180' + 60' (54.9 m + 18.3 m)
Working weight	Approx. 165,700 lbs (75,160 kg)
Ground bearing pressure	Approx. 10.8 psi (74.2 kPa)
Gradeability	40%

Calculations to determine working weight, ground bearing pressure, and gradeability include the weight of the upper and lower works of the crane, counterweights, and carbody weights, 40' boom.

General Dimensions

Height to top of gantry (lowered)	10'10" (3.31 m)
Width of upper machine w/operator's cab	9'10" (2.99 m)*
Radius of rear end (counterweights)	14'9" (4.50 m)
Counterweight ground clearance	3'7" (1.10 m)
Center of rotation to boom foot pin	3'7" (1.10 m)
Height from ground to boom foot pin	5'9" (1.75 m)
Height over gantry (raised)	20'3" (6.17 m)
Overall length of crawlers	20'7" (6.28 m)
Overall width of crawlers	17'2" (5.24 m)
Center to center, idler to sprocket	17'10" (5.44 m)
Shoe width	36" (0.91 m)
Ground clearance of body	15" (0.39 m)

Working Speed

Hoist line speed (front and rear drums)	390 ~ 10 ft/min (120 ~ 3 m/min)
Lowering line speed (front and rear drums)	390 ~ 10 ft/min (120 ~ 3 m/min)
Boom hoist line speed (front and rear drums)	230 ~ 6.6 ft/min (70 ~ 2 m/min)
Boom lowering line speed (front and rear drums)	230 ~ 6.6 ft/min (70 ~ 2 m/min)
Swing speed (max.)	4.0 rpm
Travel speed (high/low)	1.1/0.72 mph (1.7/1.1 km/h)

Line speed based on single line, no load, and first layer of rope on the drum.

Upper Machinery

Power Plant:

Diesel engine - make and model

Hino J08E-VV
(complies with Tier 4 Final)

No. of cylinders

6

Bore X stroke

4-13/32" x 5-1/8"
(112 mm x 130 mm)

Cycles

4

Total displacement

469 cu.in. (7.684 l)

Rated output SAE GROSS

286 HP / 2,100 rpm (213 kW / 2,100 min⁻¹)

Maximum torque

750 lbs-ft / 1,600 rpm (1,017 Nm / 1,600 min⁻¹)

Starter

24 Volts / 5.0 kW

Alternator

24 Volts / 90 Amp

Batteries

Two 12 volt, 136 AH/5 HR capacity series connected.

Radiator

Corrugated type core, thermostatically controlled, with cleanout screen.

Throttle

Twist grip type hand throttle, electrically controlled, in conjunction with floor mounted pedal.

Air cleaner

Dry type with replaceable paper element.

Fuel tank capacity

106 US gal. (400 liters)

Lube oil filters

Full flow and by-pass type with element type.

Fuel filter

Replaceable element.



* - 10'5" wide with Catwalks on cab side only.
11' wide with Catwalks on both sides.

CK850G-2

SPECIFICATIONS



Self Lifting Device - Standard Equipment

Counterweight and Carbody weight

Counterweight Base	1 x 20,550 (9,320 kg)
Counterweight (R)	2 x 9,260 (4,200 kg)
Counterweight (L)	2 x 9,260 (4,200 kg)
Total Counterweight	57,590 (26,120 kg)

Carbody weight	2 x 7,170 (3,250 kg)
Total Carbody weight	14,340 (6,500 kg)



Hydraulic system

Maximum pressure rating
4,626 psi (31.9MPa)

Cooling
Oil to air heat exchanger

Filtration
Full flow filters with replaceable paper elements

Reservoir capacity
100.3 US gal. (380 liters)

Hydraulic pumps:

Load hoist, boom hoist, and propel

2 piston pumps, max flow rate
67.3 US gal/min x 2 (255 ℓ/min x 2)

Swing

1 piston pump, max flow rate
46.7 US gal/min (177 ℓ/min)

Control system and auxiliary

2 Gear pumps, max flow rate
16.1 US gal/min + 10.6 US gal (61.0 ℓ/min + 40.1 ℓ/min)

Brake cooling system

2 gear pumps, max flow rate
19.3 US gal/min x 2 (73.0 ℓ/min x 2)

Gantry

This high folding type gantry is fitted with a sheave frame for boom reeving. Hydraulic lift is standard. It provides full up, full down positions with linkage.

Operators cab

Totally enclosed from weather, this full-vision cab has safety glass all around. The adjustable, high-backed seat with armrest is capable of adjustment with or without the control console. Auxiliary controls and instruments are on a side mounted console. A signal horn, windshield wipers, air conditioner/heater, and swing limiter are all standard features.

Controls

At the operator's right are console-mounted adjustable short levers for the front and rear drum and the boom hoist control. Fine inching control and free fall activation switches are built in to the levers. Beside the seat on the right are two short levers for propel control, plus individual speed dial controls for front, rear, and boom drums. At the left is the console mounted swing lever, an optional 3rd drum control, switches for the front, rear, and boom drum pawls, and the engine start/stop key. A swing brake control switch and signal horn button are on the swing lever.

Swing:

Swing unit

Hydraulic motor driving spur gears through planetary reducers to output swing pinion for 360 degree rotation.

Swing brake

Spring set hydraulically released multiple disk brake mounted on swing motor.

Swing circle

Single row ball bearing with an integral internally cut swing gear.

Swing lock

Manual, 4 position lock for transportation.

CK850G-2

SPECIFICATIONS



Line pull:

Max. line pull (single line) - 34,400 lbf (153 kN)

Rated line pull - 17,000 lbf (78.5 kN)

Lower Machinery

Crawlers:

Crawler assemblies can be hydraulically extended or retracted for wide track operation or retracted for transportation. Crawler belt tension adjusted with hydraulic jack and maintained by shims between the idler block and frame.

Crawler drive:

The independent two speed hydraulic propel drive is built into each crawler side frame. Each drive consists of a hydraulic motor driving a propel sprocket through a planetary gear box. The hydraulic motor and gear box are built into the crawler side frame within the shoe width.

Crawler brakes:

Spring set, hydraulically released, multiple disk-type parking brakes are built into each propel drive.

Steering mechanism:

A hydraulic propel system provides both skid steering and counter rotating steering.

Crawler shoe:

66 shoes - 36" wide, each crawler.

Track rollers:

The track rollers are sealed for maintenance free operation.

Front drum:

Front and rear drums for load hoist powered by hydraulic variable plunger motors, driven through planetary reducers.

Negative brake

A spring-set, hydraulically released multiple disk brake is mounted on the hoist motor and operated through a counter-balance valve.

Drum lock External ratchet for locking drum

Drums:

Front drum -

550 mm P.C.D. x 545 mm Lg., grooved for 22 mm wire rope. Rope capacity is 869' (265 m) working length and 1,099' (335 m) storage length.

Rear drum -

550 mm P.C.D. x 545 mm Lg., grooved for 22 mm wire rope. Rope capacity is 673' (205 m) working length and 1,099' (335 m) storage length.

3rd drum (optional) -

550 mm P.C.D. x 545 mm Lg., grooved for 22 mm wire rope. Rope capacity is 476' (145 m) working length and 1,099' (335 m) storage length.



Crane Attachments

Boom:

The welded lattice construction uses tubular, high-tension steel chords with pin connections between sections.

<i>Maximum boom length</i>	200' (61.0 m)
<i>Basic boom length</i>	40' (12.2 m)
<i>Boom base section</i>	19'7" (5.97 m)
<i>Boom tip section</i>	22'8" (6.91 m)

Boom insert (optional):

Optional boom inserts are available to provide extension capabilities. They are robotic welded, laser aligned, lattice constructed with tubular, high-tension steel chords and pin connections.

<i>Boom insert</i>	10' (3.1 m), 20' (6.1 m), 40' (12.2 m)
--------------------	--

Jib (optional):

Jib inserts are available to provide extension capabilities. The optional jib employs welded lattice construction with tubular, high-tension steel chords with pin connections between sections.

<i>Maximum jib length</i>	60' (18.3 m)
<i>Basic jib length</i>	30' (9.1 m)
<i>Jib base section</i>	15'9" (4.8 m)
<i>Jib tip section</i>	16'1" (4.9 m)
<i>Jib insert</i>	10' (3.1 m), 20' (6.1 m)

Jib is useable on booms of 80' (24.4 m) through 180' (54.9 m)

Standard Equipment

Lights:

- Two (2) front flood lights
- One (1) cab inside light

Gauges and warning display

Gauges

- One (1) tachometer
- One (1) hour meter
- One (1) fuel gauge
- One (1) water temperature

Warning display

- Battery charge
- Engine oil pressure
- Air cleaner
- Engine oil filter
- Control main pressure
- Hydraulic oil temperature
- DPF condition indicator

Others

- Air conditioner/heater
- Drum turn indicator (front/rear)
- Foot pedal / throttle
- Electric transfer pump
- Counterweight self-removal device
- KCross Telematics
- Free fall winches

Safety Service

- Function lock lever
- Swing Limiter
- Boom over hoist limit switch
- Signal horn
- Front/rear hoist drum lock
- Swing Limiter (Buzzer, lamps, or stops)
- Overload prevention device (LMI)
- Hook over hoist shut off (Anti-two-block)
- Boom angle indicator
- Travel alarm

Safety Service (cont)

- Level indicator
- Boom hoist drum lock
- Swing locks, anti drift, and mechanical
- Boom backstops
- Boom base catwalk
- Upper machinery catwalk, handrails and ladder

Tools and Accessories

A set of tools and accessories are furnished.

Optional Equipment

- Third drum
- Hook block
- Hook ball
- Auxiliary sheave
- Fixed jib
- Boom inserts



Auxiliary sheave (optional):

Auxiliary sheave is extendible on booms of 40' (12.2 m) through 190' (57.9 m)

Boom hoist reeving:

Twelve (12) parts of 5/8" (16.0 mm) diameter high strength wire rope.

Boom backstops:

Telescopic type with spring bumper

CK850G-2

SPECIFICATIONS

G-Mode

The G-modes are a standard exclusive energy and fuel saving system, with up to 30% in fuel savings. The G-Mode eliminates needless operations and engine functions allowing for reduced fuel consumption by using three basic modes that are all operator selectable.

Auto Idling Stop Mode (AIS):

An Industry First

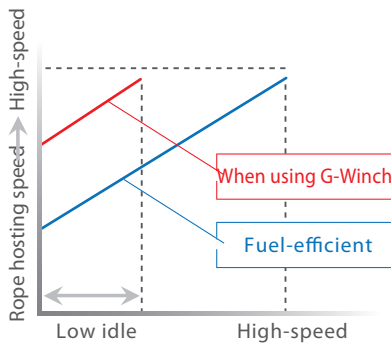
The AIS mode can conserve fuel by stopping the engine, with an operator prompt, after 10 seconds of idling time. Restarting the engine is simple by just twisting the throttle.



G-Winch Mode:

An Industry First

The G-winch mode can produce maximum winch line speed at a low engine RPM.



The high speed mode allows the line to be raised or lowered at maximum line speed without raising engine speed when lifting without a load.

G-Engine Mode:

An Industry First

The G-engine mode limits maximum engine speed to 1,725 RPM and controls the pumps to make engine operation in the most efficient condition.



G-Winch



AIS



G-Engine



Exhaust cleaning DPR:

The DPR (diesel particulate active reduction system) burns PM (particulate matter) and includes:

- DPF: Diesel Particulate Filter
- SCR: Selective Catalytic Reduction
- DEF: Diesel Exhaust Fluid

The DPR creates this new clean diesel system - although diesel engines consume less fuel and emit less CO₂ than gasoline engines, they also emit more harmful particulate matter and nitrogen oxide (NO_x). The “new clean energy system” engine utilizes a DPF, SCR and DEF to reduce particulate matter, which is also kept to a minimum using negative ions. This means that the exhaust gas from the diesel engine is cleaner, conforming with current EPA Tier 4 Final regulations.

This system requires the use of low sulfur diesel.

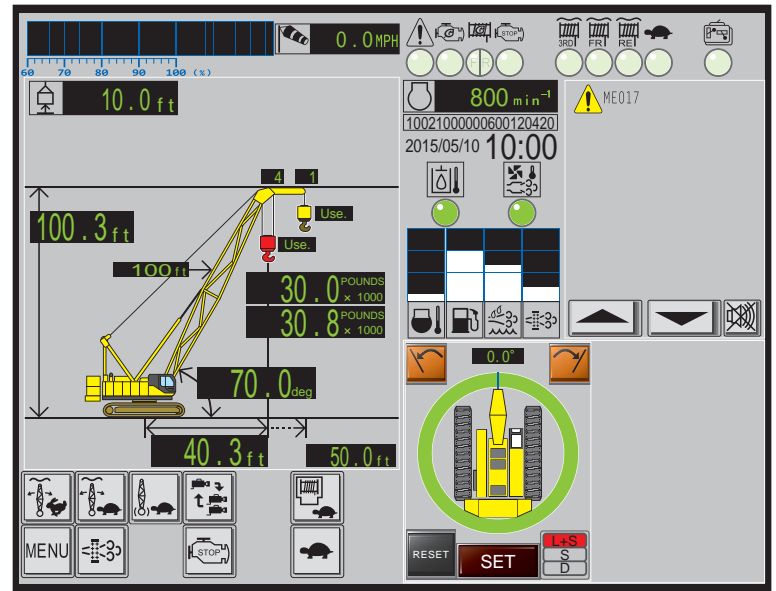
* Warning: High sulfur diesel will damage the engine.

CK850G-2

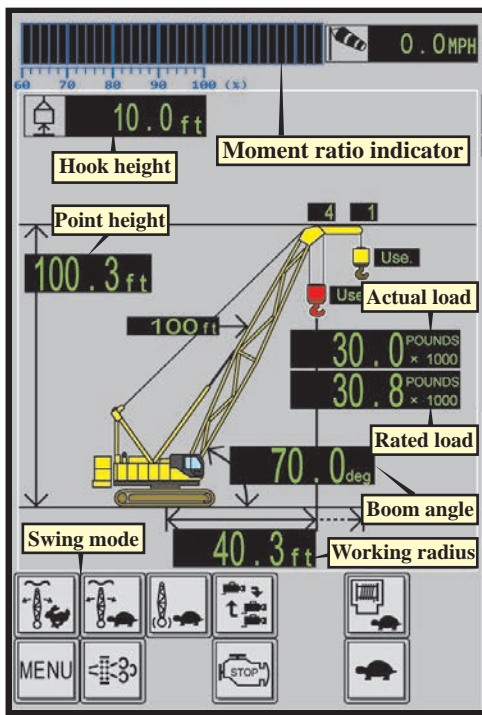
SPECIFICATIONS

Load Moment Indicator (LMI)

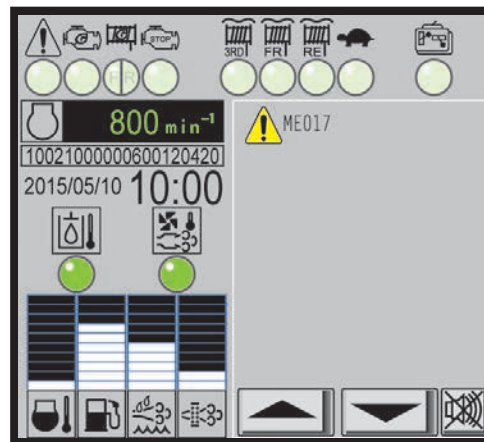
The Kobelco designed 12" touch panel screen with sunshade and screen protector is an industry first. This intuitive and easy to understand new touch screen monitor gives the operator a full display of essential data. Universal pictograms are used providing easy visual recognition, making this new technology easy to read and understand the information. This new monitor includes: Hook Height, Engine Speed, Display Lamp of standard functions, Gauges, Over-Swing Prevention Device, Maximum Load Radius, Switches, and Error Messages. Load charts include standard, jib, reduced counterweight, barge, and clamshell.



Moment Limiter (Left Side)



Gauges (Right Side)



Display Lamp

G-Engine	Engine warning lamp
G-Winch	Remote control connection
AIS operation	Free fall (main/auxiliary)
Inching Mode	Free fall (3rd)

Error Message

Touch to display details in a pop-up window.

Gauges

DEF gauge	Hydraulic oil temp lamp
Fuel gauge	Exhaust system cooling lamp
Diesel particulate filter gauge	
Coolant temperature	

* Figures for the above gauges are only shown when the bar is touched.

Main Menu

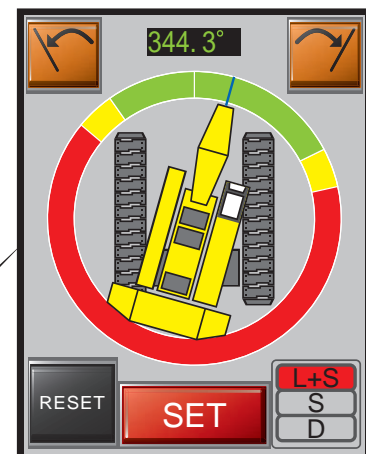


Adjustment Mode

Service Mode

Over-Swing Prevention

An over-swing preventative device is standard. It limits the swing of the crane. Configuration is simple and can be done from the touch panel.



Winch Performance Data

Note:

Line speed and line pull based on Hino J08E-VV at 2,100 rpm.

Line speed and line pull based on single line.

Max. line pull is based on referential performance, not wire rope strength.

Front & Rear Drum

Wire Rope Diameter = 22 mm

Rated Line Pull = 17,000 lbf (78.5 kN)

Maximum Line Pull = 34,400 lbf (153 kN)

Total Storage Capacity = 1,099 ft (334.9 m)

		Line speed (ft/min)					
Layer		1	2	3	4	5	6
Line Pull (lbs)	0	394	420	446	472	499	storage only
	5,000	394	420	446	472	499	
	10,000	394	420	438	434	437	
	15,000	296	292	287	279	269	
	17,000	265	246	235	221	216	
	20,000	195	183	184	183	181	
	25,000	145	142	137	131	123	
	32,000	95					
Storage Capacity (ft)		130	139	148	157	166	175

Third Drum (for Load hoist)

Wire Rope Diameter = 22 mm

Rated Line Pull = 17,000 lbf (78.5 kN)

Maximum Line Pull = 32,400 lbf (144 kN)

Total Storage Capacity = 1,099 ft (334.9 m)

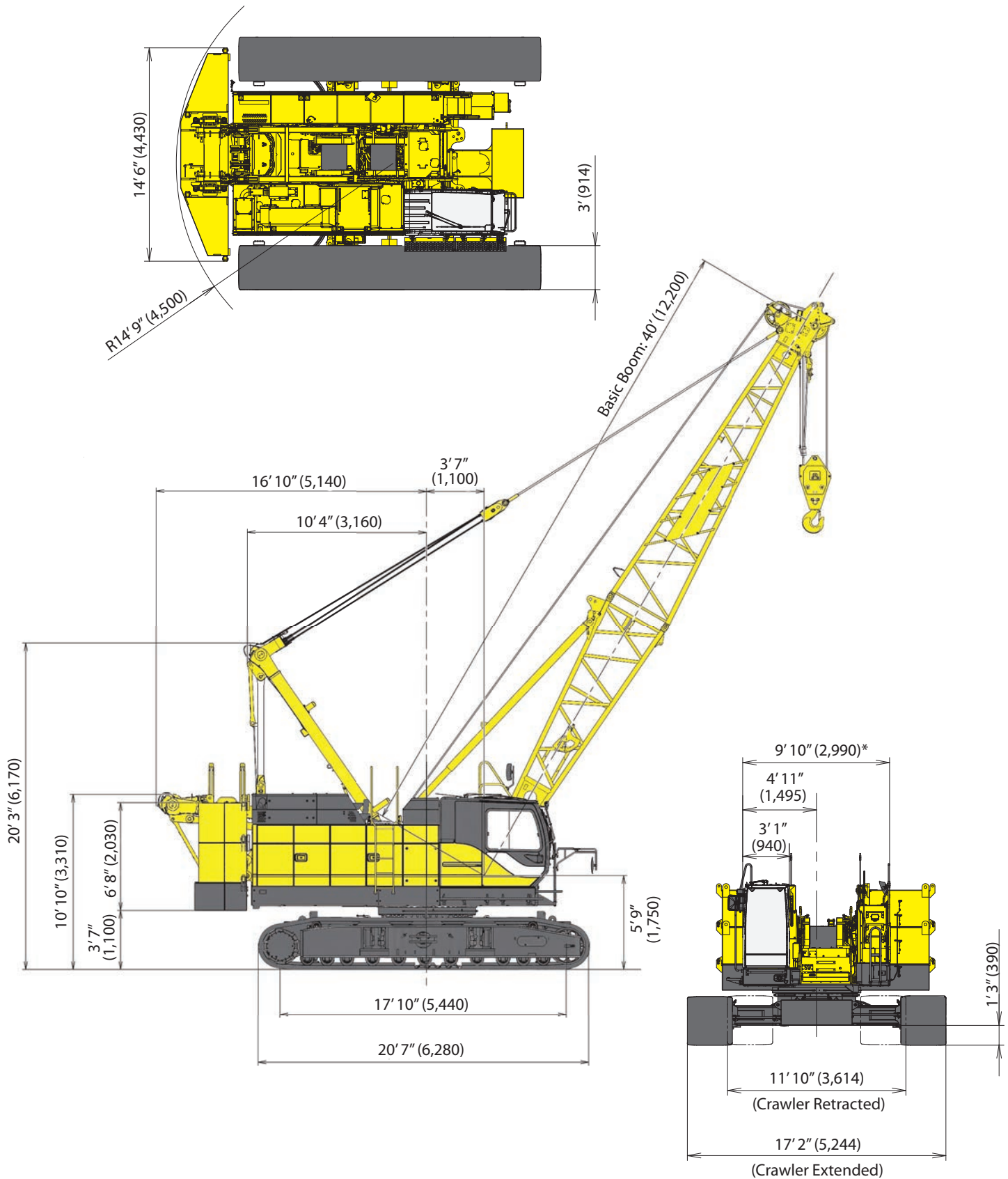
		Line speed (ft/min)					
Layer		1	2	3	4	5	6
Line Pull (lbs)	0	394	394	394	394	394	
	5,000	394	394	394	394	394	
	10,000	227	227	227	227	227	
	15,000	147	152	161	170	179	storage only
	17,000	142	151	160	169	178	
	20,000	140	149	158	167	176	
	25,000	138	147	155	163	164	
	30,000	136	135				
Storage Capacity (ft)		130	139	148	157	166	175

Wire Rope Specifications

Use	Construction	No load diameter	Length	Safety Factor	Required minimum breaking strength
Front drum	6 x 29 Filler IWRC Right hand lay, Regular lay	0.888" to 0.905" (22.55 mm to 22.99 mm)	869' (265 m)	3.5: 1	81,606 lbf (363 kN)
Rear drum	6 x 29 Filler IWRC Right hand lay, Regular lay	0.888" to 0.905" (22.55 mm to 22.99 mm)	672' (205 m)	3.5: 1	81,606 lbf (363 kN)
Boom drum	6 x 31 P-Warrington seal Right hand lay, Regular lay	0.646" to 0.658" (16.40 mm to 16.72 mm)	492' (150 m)	3.5: 1	47,210 lbf (210 kN)
Third drum (Optional)	6 x 29 Filler IWRC Right hand lay, Regular lay	0.888" to 0.905" (22.55 mm to 22.99 mm)	476' (145 m)	3.5: 1	81,606 lbf (363 kN)

CK850G-2 SPECIFICATIONS

General Dimensions



* - 10'5" wide with Catwalks on cab side only.
11' wide with Catwalks on both sides.

CK850G-2

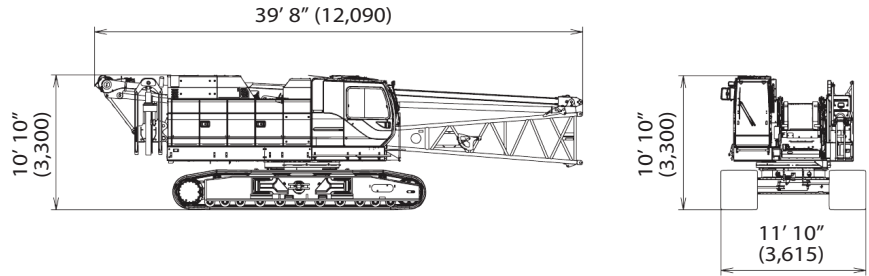
SPECIFICATIONS

Dimensions and Weight

Dimensions: ft-in (mm) Weight: lbs (kg)

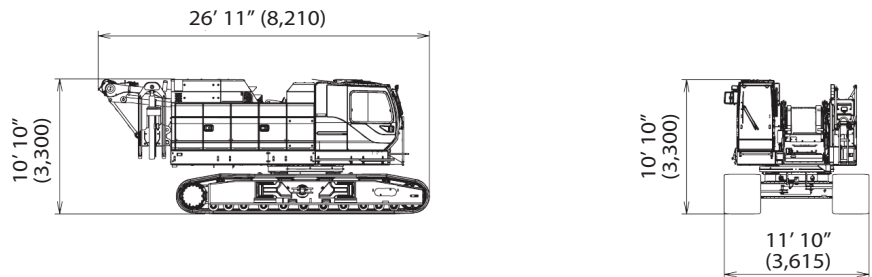
Base Machine - 1

Weight: 92,200 lbs (41,810 kg)
Boom base, gantry, crawlers, self removal unit, and wire ropes (front, rear, and boom hoist)



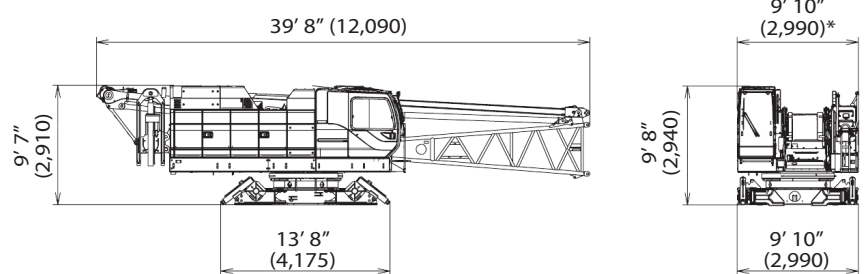
Base Machine - 2

Weight: 88,000 lbs (39,895 kg)
Gantry, crawlers, self removal unit, and wire ropes (front, rear, and boom hoist)



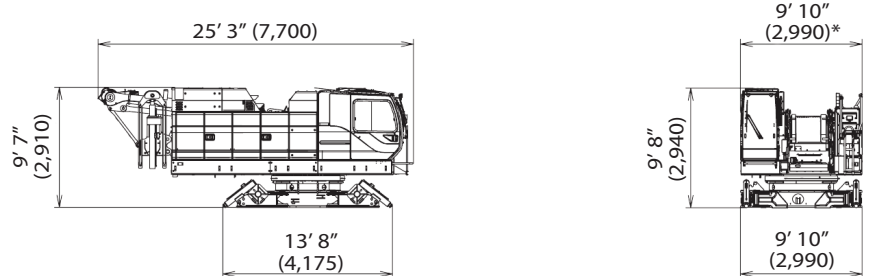
Base Machine - 3

Weight: 61,600 lbs (27,940 kg)
Boom base, gantry, self removal unit, and wire ropes (front, rear, and boom hoist)



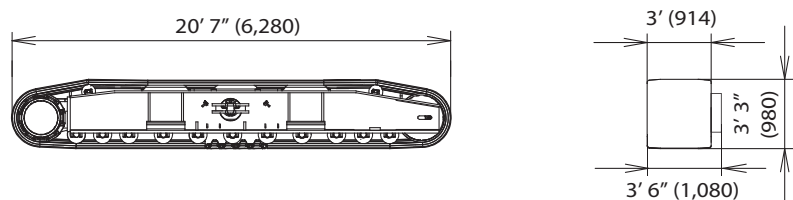
Base Machine - 4

Weight: 57,400 lbs (26,030 kg)
Gantry, self removal unit, and wire ropes (front, rear, and boom hoist)



Crawler

Weight: 16,700 lbs (7,550 kg)



* - 10'5" wide with Catwalks on cab side only.
11' wide with Catwalks on both sides.

CK850G-2

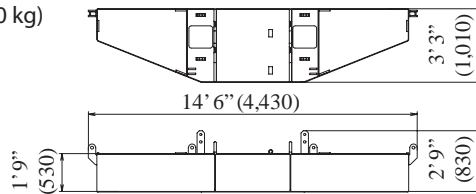
SPECIFICATIONS

Dimensions and Weight

Dimensions: ft-in (mm) Weight: lbs (kg)

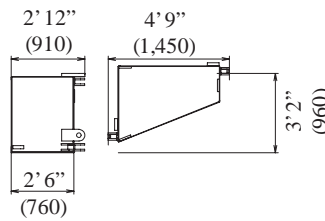
Counterweight Base

Weight: 20,550 lbs (9,320 kg)



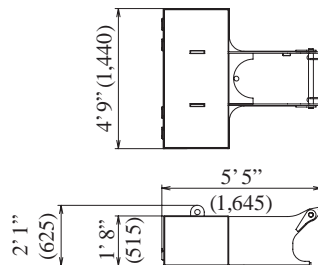
Counterweight (R)

Weight: 9,260 lbs (4,200 kg)



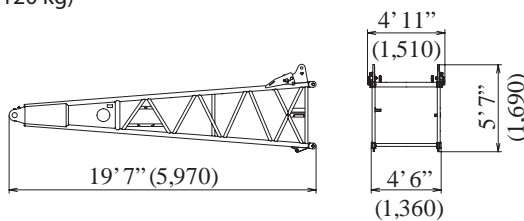
Carbody Weight

Weight: 7,170 lbs (3,250 kg)



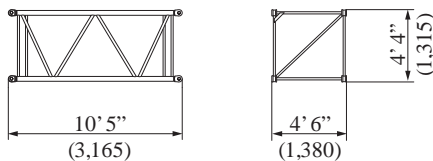
Boom Base

Weight: 2,500 lbs (1,120 kg)



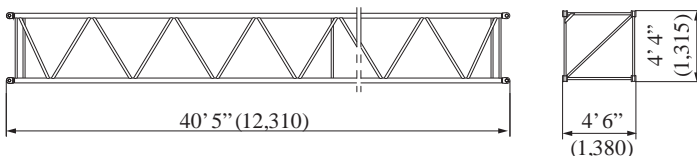
10 ft (3.0 m) Insert Boom

Weight: 610 lbs (275 kg)



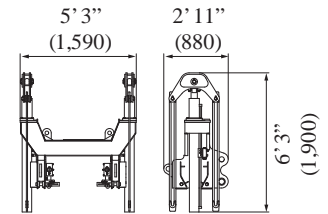
40 ft (12.2 m) Insert Boom

Weight: 1,900 lbs (870 kg)



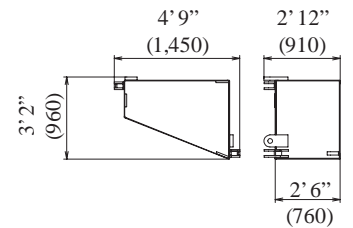
Self Removal Unit

Weight: 1,900 lbs (860 kg)



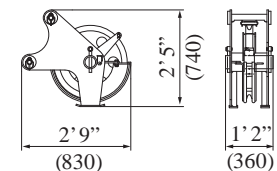
Counterweight (L)

Weight: 9,260 lbs (4,200 kg)



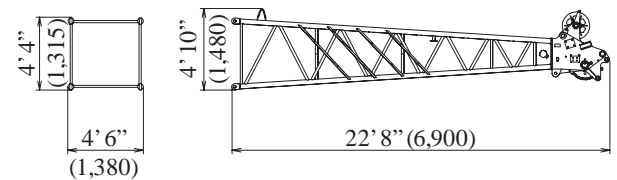
Auxiliary Sheave

Weight: 320 lbs (145 kg)



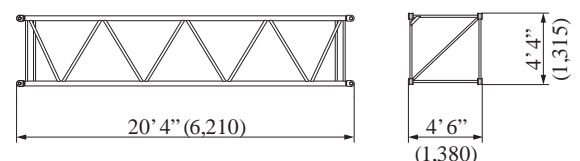
Boom Tip

Weight: 2,300 lbs (1,025 kg)



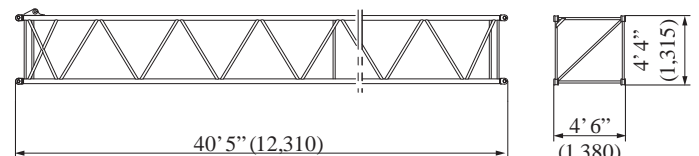
20 ft (6.1 m) Insert Boom

Weight: 1,100 lbs (475 kg)



40 ft (12.2 m) Insert Boom (with lug)

Weight: 2,000 lbs (885 kg)



CK850G-2

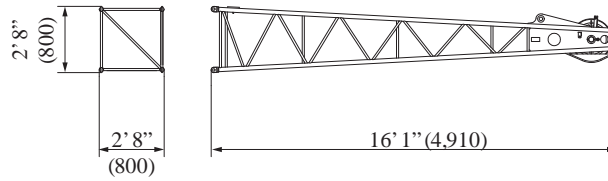
SPECIFICATIONS

Dimensions and Weight

Dimensions: ft-in (mm) Weight: lbs (kg)

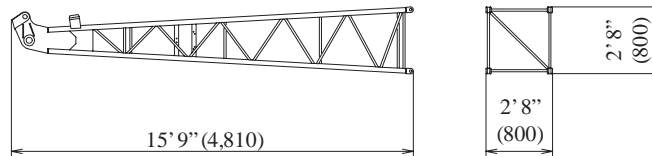
Jib Tip

Weight: 490 lbs (220 kg)



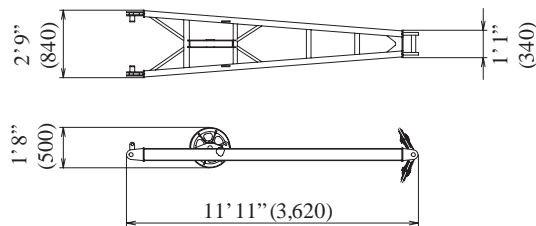
Jib Base

Weight: 440 lbs (200 kg)



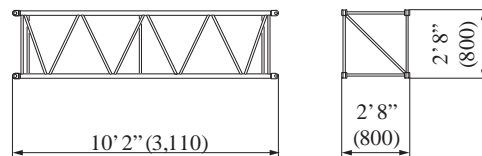
Jib Strut

Weight: 460 lbs (210 kg)



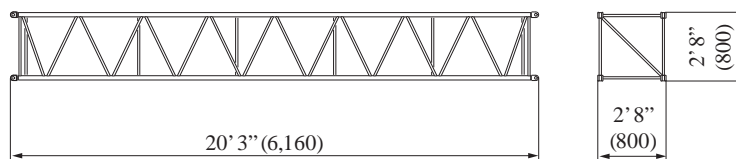
10 ft (3.0 m) Jib Insert

Weight: 210 lbs (95 kg)



20 ft (6.1 m) Jib Insert

Weight: 390 lbs (175 kg)



CK850G-2

SPECIFICATIONS

Transportation Plan

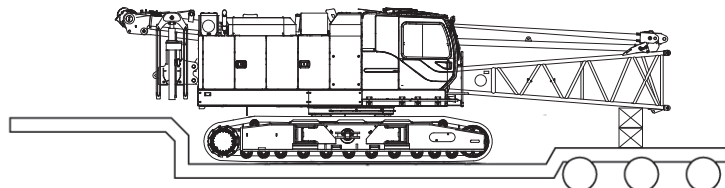
Refer to pages 10-12

Description of Item	Weight		Trailer Loads			
	lbs	(kg)	#1	#2	#3	#4
Base Machine with Boom Base and Crawlers*	92,200	(41,810)	1			
Counterweight Base	20,550	(9,320)		1		
Counterweight (L)	9,260	(4,200)			2	
Counterweight ('R)	9,260	(4,200)		1	1	
Carbody Weight	7,170	(3,250)				2
10 ft Insert Boom	610	(275)			1	
20 ft Insert Boom	1,100	(475)		1		
40 ft Insert Boom	1,900	(870)			1	
40 ft Insert Boom (w/ Lug)	2,000	(885)				1
Boom Tip	2,300	(1,025)		1		
Jib Base	440	(200)				
10 ft Insert Jib	210	(95)				
20 ft Insert Jib	390	(175)				
Jib Tip	490	(220)				
75 Ton Block	3,000	(1,361)		1		
13 Ton Ball	800	(365)		1		
Ladder Assembly	90	(41)				1
Support Box	5,000	(2,268)				1
Approx. Total Shipping Weight		lbs (kg)	92,200 (41,810)	37,010 (16,746)	30,290 (13,745)	21,430 (9,694)

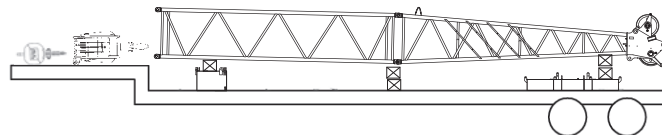
* Third drum is not included. Add 4,200 lbs if third drum is installed.

Loads for transportation were targeted at 45,000 lbs, 8' 6" wide, 48' long and 13' 6" high from ground, 48' step deck. This may vary depending on truck/trailer weight, style of trailer and state law.

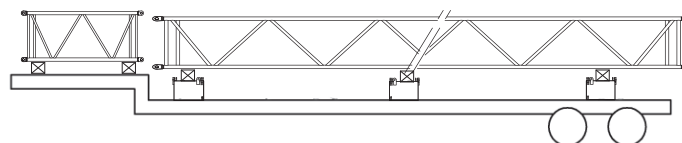
Trailer #1



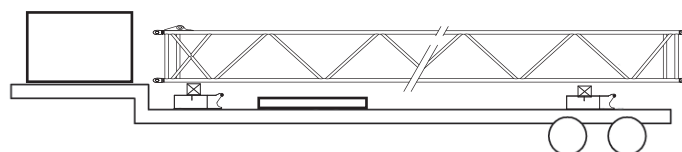
Trailer #2



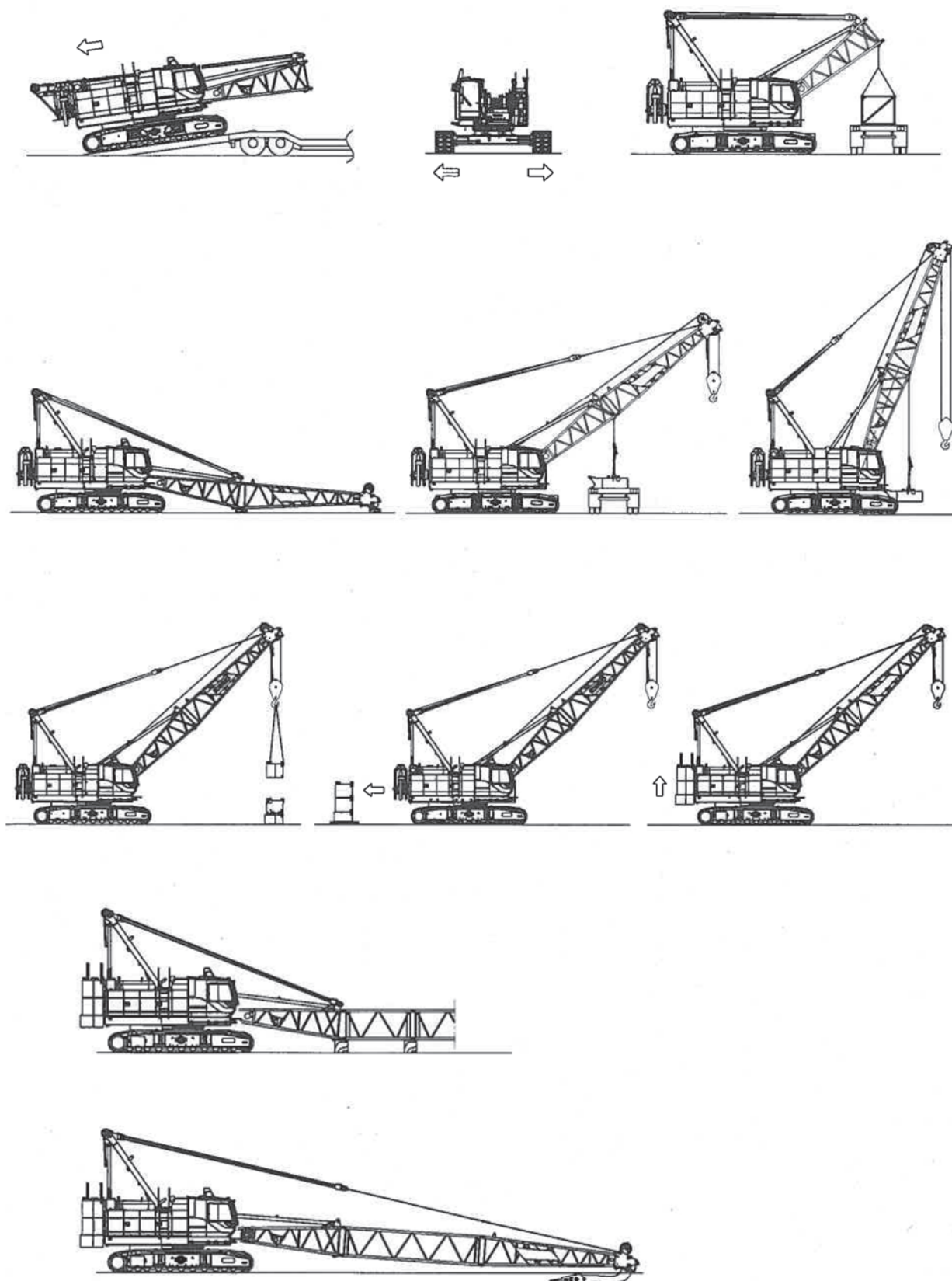
Trailer #3



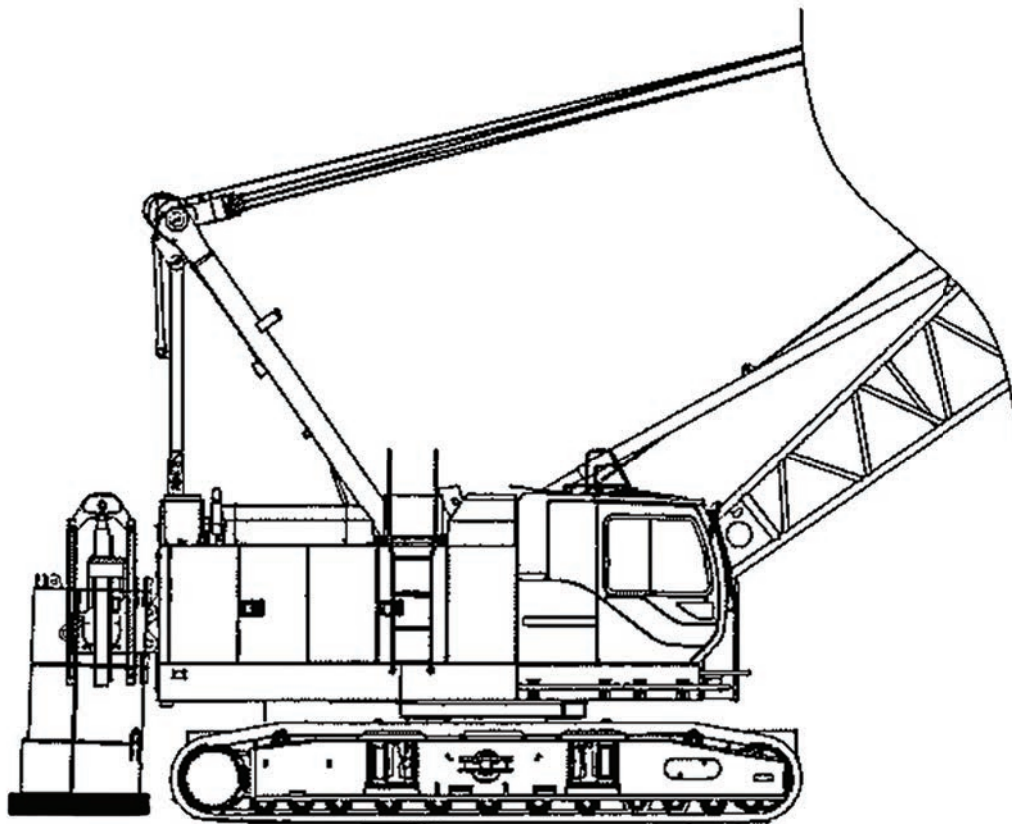
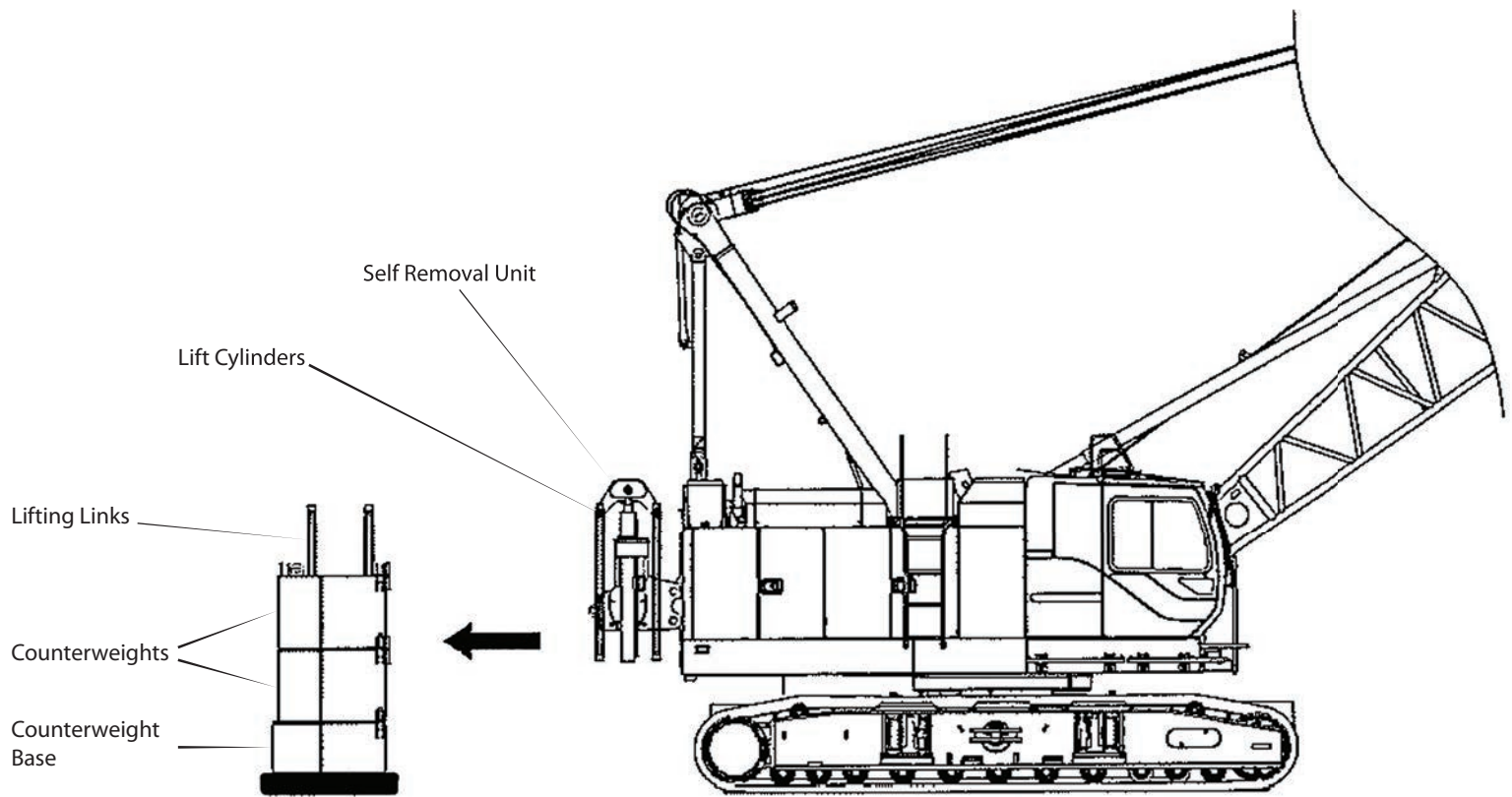
Trailer #4



Self-Assembly Procedure



Counterweight Self-Removal Device



Boom and Fixed Jib Arrangement

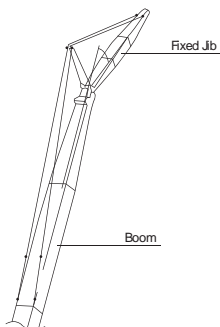
Boom length ft (m)	Boom arrangement
40 (12.2)	
50 (15.2)	
60 (18.3)	※
70 (21.3)	※
80 (24.4)	※
90 (27.4)	※
100 (30.5)	※
110 (33.5)	※
120 (36.6)	※
130 (39.6)	※
140 (42.7)	※

Boom length ft (m)	Boom arrangement
150 (45.7)	※
160 (48.8)	※
170 (51.8)	※
180 (54.9)	※
190 (57.9)	※
200 (61.0)	※

Symbol	Boom Length	Remarks
	20.0 ft (6.1 m)	Boom Base
	20.0 ft (6.1 m)	Boom Top
	10.0 ft (3.1 m)	Insert Boom
	20.0 ft (6.1 m)	Insert Boom
	40.0 ft (12.2 m)	Insert Boom
	40.0 ft (12.2 m)	Insert Boom with lug

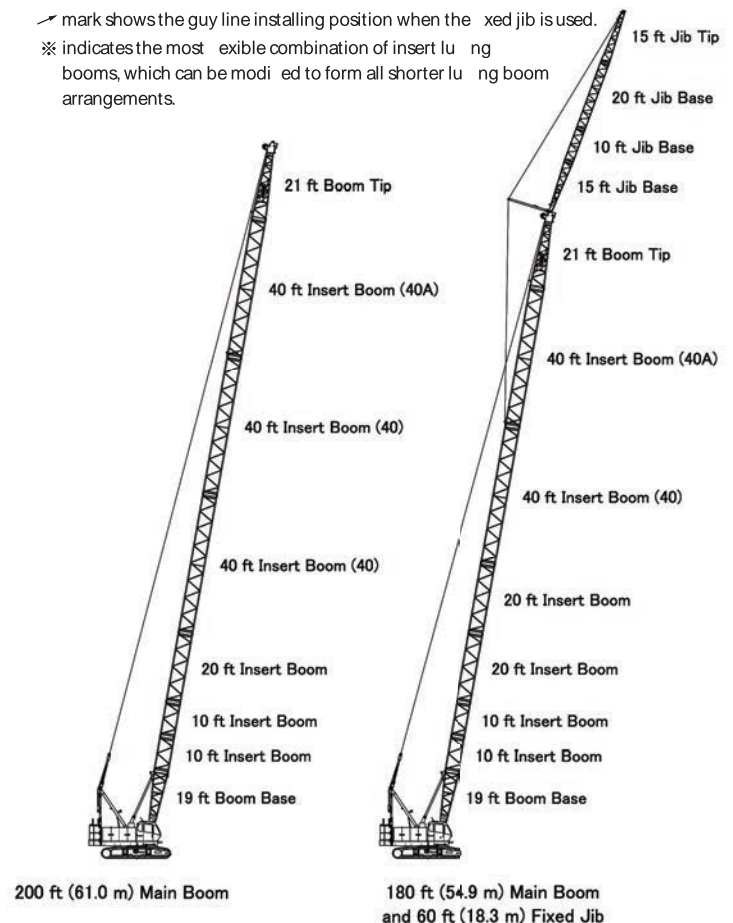
↗ mark shows the guy line installing position when the fixed jib is used.
 ※ indicates the most flexible combination of insert lugging booms, which can be modified to form all shorter lugging boom arrangements.

Fixed Jib Arrangement



Crane boom length	Jib length ft (m)	Jib arrangement
80 ft (24.4 m) } 180 ft (54.9 m)	30 (9.1)	
	40 (12.2)	
	50 (15.2)	
	60 (18.3)	

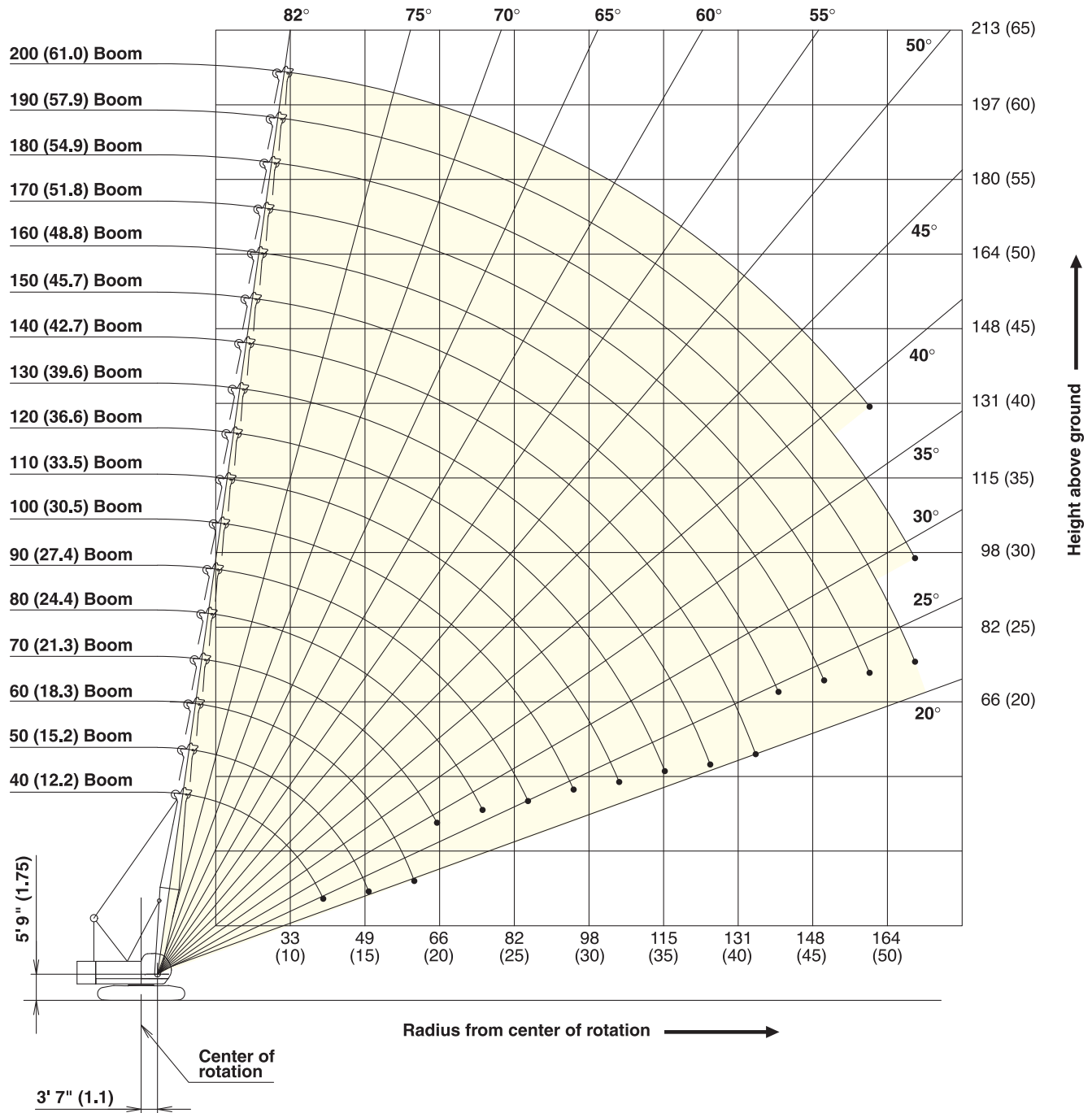
Symbol	Jib Length	Remarks
	15 ft (4.6 m)	Jib Base
	15 ft (4.6 m)	Jib Top
	10 ft (3.0 m)	Insert Jib
	20 ft (6.1 m)	Insert Jib



Working Ranges

Main Boom

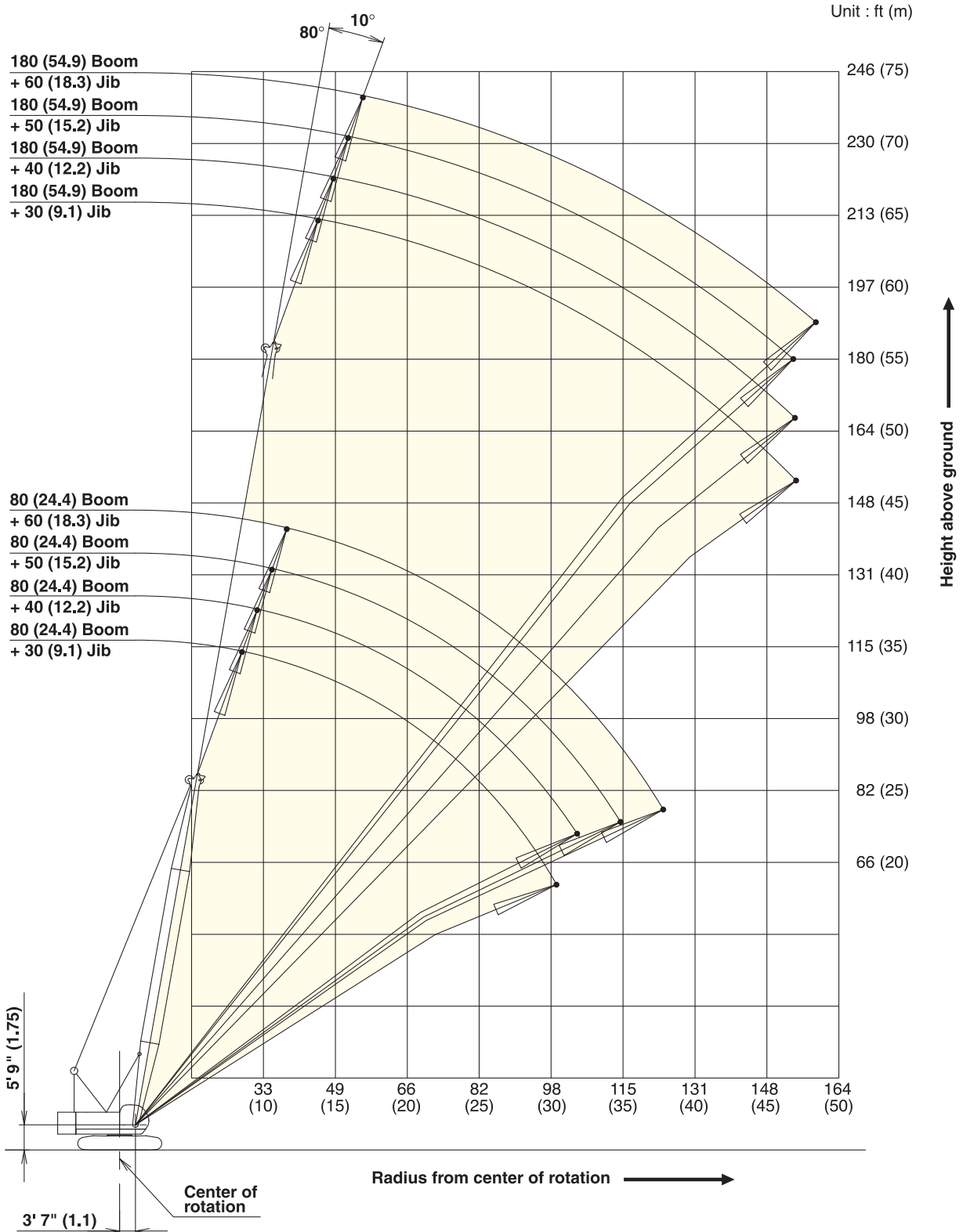
Unit : ft (m)



Working Ranges

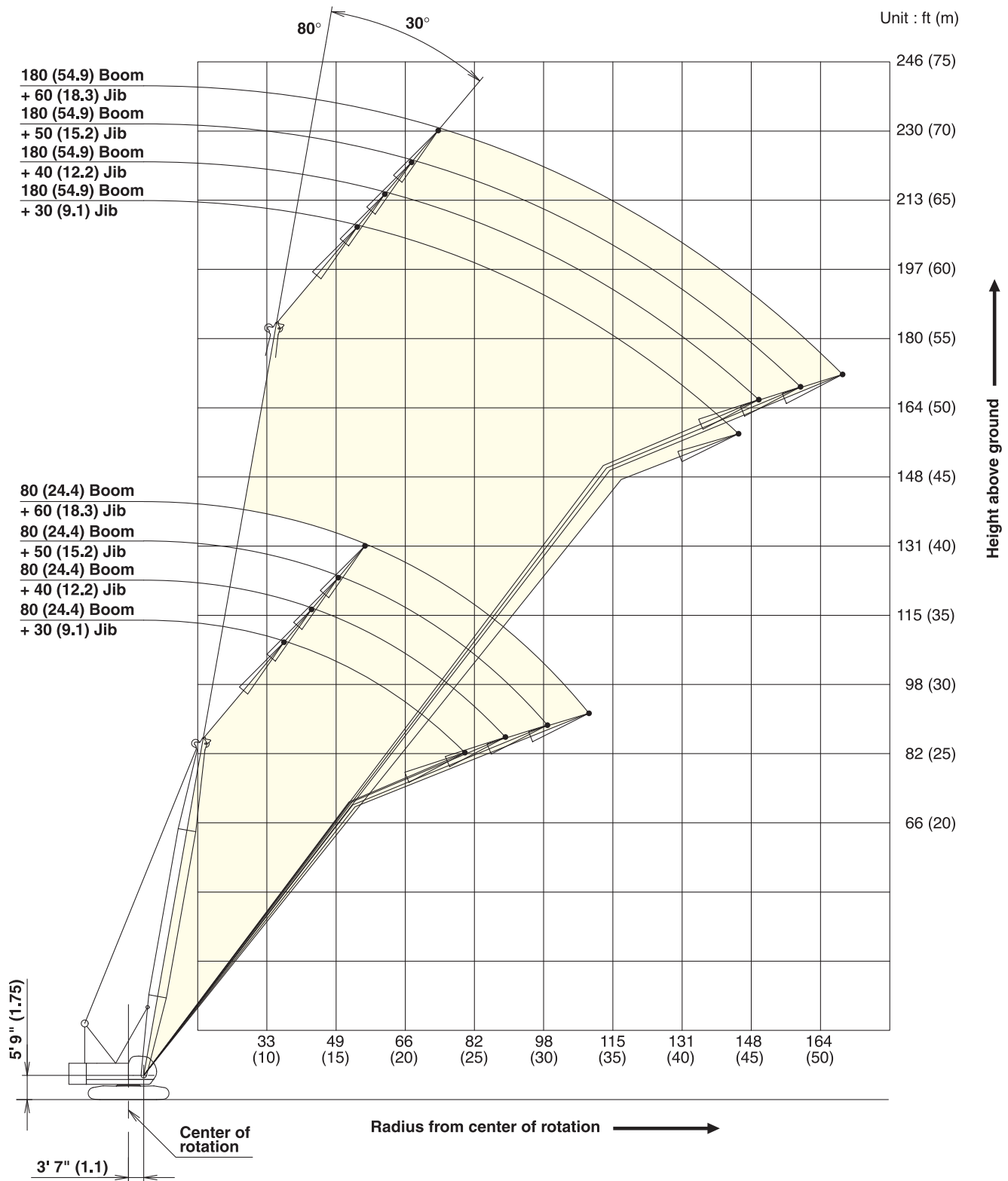
Fixed Jib 10°

Unit : ft (m)



Working Ranges

Fixed Jib 30°



Supplemental Data

- Rated loads included in the charts are the maximum allowable freely suspended loads at a given boom length, boom angle and load radius, and have been determined for the machine standing level on firm supporting surface under ideal operating conditions. The user must limit or de-rate rated loads to allow for adverse conditions (such as soft or uneven ground, out-of-level conditions, wind, side loads, pendulum action, jerking or sudden stopping of loads, inexperience of personnel, multiple machine lifts, and traveling with a load).
- Rated loads do not exceed 75% of minimum tipping loads. Rated loads based on factors other than machine stability such as structural competence are shown by asterisk * in the charts.
- The machine must be reeved and set-up as stated in the operation manual and all the instruction manuals if these manuals are missing, obtain replacements.
 - The crane must be leveled to within 1% on a firm supporting surface.
 - Boom backstops are required for all boom length.
 - Gantry must be fully raised position for all operations.
 - Crawlers must be fully extended and be locked in position.
 - Counterweights and carbody weights are fully installed.
- Do not attempt to lift where no radius on load is listed as crane may tip or collapse.
- Attempting to lift more than rated loads may cause machine to tip or collapse. Do not tip machine to determine rated loads.
- Weight of hooks, hook blocks, slings and other lifting devices are a part of the total load. Their total weight must be subtracted from the rated load to obtain the weight that can be lifted.
- When lifting over boom point with jib or auxiliary sheave, rated loads for the boom must be deducted as shown below.

Jib Length	Aux Sheave	30 ft	40 ft	50 ft	60 ft
Deduct (lbs)	320	2,400	3,200	4,200	5,200

- When auxiliary sheave is used for 9 or 10 reeving parts of line, it is not required to deduct 320 lbs from rated load.
- The total load that can be lifted by jib is limited by rated jib loads.
- Boom lengths for jib mounting are 80 ft (24.4 m) to 180 ft (54.9 m)
- The total load that can be lifted by the auxiliary sheave is the value for 320 lbs deducted from rated

load for the boom (without auxiliary sheave installed); however, the auxiliary sheave rated load should not exceed 17,000 lbs.

- Boom lengths that can attach auxiliary sheave are from 40 ft (12.2 m) to 190 ft (57.9 m).
- The boom should be erected over the front of the crawlers, not laterally. When erecting from or lowering to the ground the boom at length of 180 ft (54.9 m) with jib, the blocks for erections must be placed at the end of the crawlers.
- Least stable position is over the side.
- Maximum hoist load for number of reeving parts of line for hoist rope.

Maximum Load for Main Boom

No. of Parts of line	1	2	4	5
Maximum Loads (lbs)	17,000	34,000	68,000	85,000

No. of Parts of line	6	7	8	9*	10*
Maximum Loads (lbs)	102,000	119,000	136,000	153,000	170,000

* - Use auxiliary sheave

Maximum Load for Fixed Jib

No. of Parts of line	1	2
Maximum Loads (lbs)	17,000	24,000

Maximum Load Auxiliary Sheave

No. of Parts of line	1
Maximum Loads (lbs)	17,000

- Weight of recommended hook block.

Hook Block	85USt	55USt	35USt	21USt	Ball Hook
Weight (lbs)	1,765	1,545	1,105	885	355

WARNING:

If the weight of the hook block to be used is lighter than the recommended weight, the jib may turn over backward or it is difficult to lower the empty hook block.

- Lifting capacities listed apply only to the machine as originally manufactured and designed by KOBELCO CONSTRUCTION MACHINERY CO., LTD. Modifications to this machine or use of equipment other than that specified can reduce operating capacity.

- Designed and rated to comply with ANSI Code B30.5. 5-2014

Operation of this equipment in excess of rated loads or disregard of instruction voids the warranty.

CK850G-2

SPECIFICATIONS

Main Boom Lift Capacity

Full Counterweight: 57,590 lbs Carbody Weight: 14,340

40' Boom			50' Boom			60' Boom			70' Boom			80' Boom		
Load Radius (ft)	Boom Angle (deg.)	360° Rated Load (lbs)	Load Radius (ft)	Boom Angle (deg.)	360° Rated Load (lbs)	Load Radius (ft)	Boom Angle (deg.)	360° Rated Load (lbs)	Load Radius (ft)	Boom Angle (deg.)	360° Rated Load (lbs)	Load Radius (ft)	Boom Angle (deg.)	360° Rated Load (lbs)
10.0	81.7	170,000 *	12.0	81.1	166,400 *	13.0	81.6	154,200 *	14.0	82.0	143,600 *	16.0	81.6	126,300 *
11.0	80.3	170,000 *	13.0	79.9	154,400 *	14.0	80.7	143,800 *	15.0	81.2	134,500 *	17.0	80.8	119,100 *
12.0	78.8	166,600 *	14.0	78.8	144,000 *	15.0	79.7	134,700 *	16.0	80.3	126,500 *	18.0	80.1	112,600 *
13.0	77.4	154,600 *	15.0	77.6	134,900 *	16.0	78.7	126,700 *	17.0	79.5	119,300 *	19.0	79.4	105,290
14.0	75.9	144,200 *	16.0	76.4	126,900 *	17.0	77.7	119,500 *	18.0	78.7	112,800 *	20.0	78.6	96,930
15.0	74.4	135,100 *	17.0	75.2	119,700 *	18.0	76.8	113,000 *	19.0	77.8	105,400	22.0	77.2	83,550
16.0	72.9	127,100 *	18.0	74.0	113,200 *	19.0	75.8	105,460	20.0	77.0	97,060	24.0	75.7	73,320
17.0	71.4	119,900 *	19.0	72.8	105,660	20.0	74.8	97,130	22.0	75.3	83,700	26.0	74.2	65,230
18.0	69.9	113,400 *	20.0	71.6	97,350	22.0	72.8	83,790	24.0	73.6	73,470	28.0	72.7	58,680
19.0	68.3	105,820	22.0	69.2	84,010	24.0	70.8	73,560	26.0	71.9	65,380	30.0	71.2	53,260
20.0	66.7	97,500	24.0	66.7	73,810	26.0	68.7	65,490	28.0	70.1	58,840	32.0	69.7	48,690
22.0	63.6	84,190	26.0	64.2	65,760	28.0	66.6	58,970	30.0	68.4	53,430	34.0	68.1	44,840
24.0	60.3	74,000	28.0	61.6	59,230	30.0	64.5	53,570	32.0	66.6	48,890	36.0	66.6	41,490
26.0	56.9	65,980	30.0	58.9	53,890	32.0	62.4	49,030	34.0	64.8	45,030	38.0	65.0	38,580
28.0	53.4	59,480	32.0	56.2	49,310	34.0	60.2	45,170	36.0	63.0	41,680	40.0	63.4	36,020
30.0	49.7	54,100	34.0	53.3	45,480	36.0	58.0	41,840	38.0	61.1	38,800	45.0	59.3	30,820
32.0	45.7	49,580	36.0	50.4	42,150	38.0	55.7	38,950	40.0	59.2	36,240	50.0	55.0	26,820
34.0	41.5	45,740	38.0	47.3	39,280	40.0	53.3	36,410	45.0	54.3	31,040	55.0	50.5	23,670
36.0	36.9	42,460	40.0	44.1	36,750	45.0	47.0	31,230	50.0	49.0	27,070	60.0	45.6	21,140
38.0	31.6	39,590	45.0	34.9	31,590	50.0	40.0	27,290	55.0	43.3	23,960	65.0	40.3	19,060
40.0	25.5	34,830 *	50.0	22.7	26,890 *	55.0	31.7	24,200	60.0	36.9	21,450	70.0	34.4	17,350
						60.0	20.6	21,600 *	65.0	29.3	19,420	75.0	27.3	15,890
Reeves		10	Reeves		10	Reeves		10	Reeves		9	Reeves		8
90' Boom			100' Boom			110' Boom			120' Boom			130' Boom		
Load Radius (ft)	Boom Angle (deg.)	360° Rated Load (lbs)	Load Radius (ft)	Boom Angle (deg.)	360° Rated Load (lbs)	Load Radius (ft)	Boom Angle (deg.)	360° Rated Load (lbs)	Load Radius (ft)	Boom Angle (deg.)	360° Rated Load (lbs)	Load Radius (ft)	Boom Angle (deg.)	360° Rated Load (lbs)
17.0	81.9	118,820 *	19.0	81.5	101,850 *	20.0	81.8	92,590 *	22.0	81.5	80,680 *	24.0	81.3	71,200 *
18.0	81.2	112,400 *	20.0	80.9	96,800	22.0	80.7	83,260	24.0	80.5	72,950	26.0	80.4	64,610
19.0	80.6	105,220	22.0	79.8	83,400	24.0	79.7	73,010	26.0	79.6	64,810	28.0	79.5	58,020
20.0	79.9	96,870	24.0	78.6	73,120	26.0	78.6	64,900	28.0	78.6	58,240	30.0	78.6	52,570
22.0	78.6	83,480	26.0	77.4	65,010	28.0	77.5	58,330	30.0	77.6	52,800	32.0	77.7	48,010
24.0	77.3	73,230	28.0	76.3	58,440	30.0	76.5	52,880	32.0	76.6	48,230	34.0	76.8	44,110
26.0	76.0	65,140	30.0	75.1	53,020	32.0	75.4	48,320	34.0	75.6	44,330	36.0	75.9	40,760
28.0	74.7	58,570	32.0	73.9	48,450	34.0	74.3	44,440	36.0	74.7	40,980	38.0	74.9	37,830
30.0	73.4	53,150	34.0	72.7	44,550	36.0	73.2	41,090	38.0	73.7	38,050	40.0	74.0	35,250
32.0	72.0	48,580	36.0	71.5	41,200	38.0	72.1	38,160	40.0	72.7	35,470	45.0	71.7	30,000
34.0	70.7	44,700	38.0	70.3	38,290	40.0	71.0	35,600	45.0	70.1	30,220	50.0	69.4	25,970
36.0	69.3	41,380	40.0	69.0	35,730	45.0	68.2	30,350	50.0	67.6	26,210	55.0	67.0	22,790
38.0	68.0	38,440	45.0	65.9	30,480	50.0	65.4	26,340	55.0	65.0	23,010	60.0	64.6	20,210
40.0	66.6	35,890	50.0	62.7	26,470	55.0	62.5	23,170	60.0	62.3	20,450	65.0	62.1	18,070
45.0	63.0	30,660	55.0	59.5	23,320	60.0	59.5	20,610	65.0	59.5	18,320	70.0	59.6	16,290
50.0	59.4	26,670	60.0	56.1	20,740	65.0	56.4	18,490	70.0	56.7	16,530	75.0	57.0	14,770
55.0	55.6	23,520	65.0	52.5	18,620	70.0	53.2	16,710	75.0	53.8	15,010	80.0	54.3	13,470
60.0	51.6	20,960	70.0	48.8	16,860	75.0	49.9	15,210	80.0	50.8	13,710	85.0	51.5	12,320
65.0	47.4	18,870	75.0	44.8	15,360	80.0	46.4	13,910	85.0	47.6	12,580	90.0	48.6	11,330
70.0	42.9	17,100	80.0	40.6	14,080	85.0	42.6	12,800	90.0	44.3	11,590	95.0	45.6	10,440
75.0	37.9	15,630	85.0	35.9	12,980	90.0	38.6	11,830	95.0	40.7	10,730	100.0	42.4	9,670
80.0	32.3	14,370	90.0	30.6	12,010	95.0	34.2	10,970	100.0	36.9	9,960	105.0	39.0	8,990
85.0	25.7	13,310	95.0	24.3	11,190	100.0	29.2	10,250	105.0	32.7	9,280	110.0	35.4	8,390
						105.0	23.2	9,610	110.0	27.9	8,680	115.0	31.3	7,840
									115.0	22.2	8,170	120.0	26.7	7,360
												125.0	21.2	6,940
Reeves		7	Reeves		6	Reeves		6	Reeves		5	Reeves		5

Note: Designed and rated to comply with ANSI Code B30.5
 Capacities based on factors other than machine stability such as structural competence are shown by asterisk * in the charts.
 Refer to notes on page 19.

CK850G-2

SPECIFICATIONS

Main Boom Lift Capacity

Full Counterweight: 57,590 lbs Carbody Weight: 14,340

140' Boom			150' Boom			160' Boom			170' Boom			180' Boom		
Load Radius (ft)	Boom Angle (deg.)	360° Rated Load (lbs)	Load Radius (ft)	Boom Angle (deg.)	360° Rated Load (lbs)	Load Radius (ft)	Boom Angle (deg.)	360° Rated Load (lbs)	Load Radius (ft)	Boom Angle (deg.)	360° Rated Load (lbs)	Load Radius (ft)	Boom Angle (deg.)	360° Rated Load (lbs)
24.0	81.9	61,720 *	26.0	81.7	52,680 *	28.0	81.5	44,090 *	28.0	82.0	38,800 *	30.0	81.8	33,730 *
26.0	81.1	60,840 *	28.0	80.9	51,800 *	30.0	80.7	43,430 *	30.0	81.3	38,130 *	32.0	81.1	33,060 *
28.0	80.2	57,980	30.0	80.1	51,140 *	32.0	80.0	42,760 *	32.0	80.6	37,470 *	34.0	80.5	32,620 *
30.0	79.4	52,530	32.0	79.3	47,810	34.0	79.3	42,100 *	34.0	79.9	37,030 *	36.0	79.8	31,960 *
32.0	78.6	47,950	34.0	78.6	43,890	36.0	78.6	40,520	36.0	79.2	36,370 *	38.0	79.2	31,520 *
34.0	77.7	44,040	36.0	77.8	40,540	38.0	77.8	37,560	38.0	78.6	35,710 *	40.0	78.5	31,080 *
36.0	76.9	40,670	38.0	77.0	37,610	40.0	77.1	34,980	40.0	77.9	34,780	45.0	76.9	29,250
38.0	76.0	37,740	40.0	76.2	35,030	45.0	75.2	29,710	45.0	76.1	29,510	50.0	75.3	25,220
40.0	75.2	35,160	45.0	74.2	29,760	50.0	73.4	25,680	50.0	74.4	25,460	55.0	73.6	22,000
45.0	73.1	29,910	50.0	72.2	25,720	55.0	71.5	22,480	55.0	72.6	22,260	60.0	72.0	19,400
50.0	70.9	25,880	55.0	70.2	22,530	60.0	69.6	19,880	60.0	70.9	19,660	65.0	70.3	17,260
55.0	68.7	22,680	60.0	68.2	19,950	65.0	67.7	17,720	65.0	69.1	17,520	70.0	68.6	15,450
60.0	66.5	20,100	65.0	66.1	17,810	70.0	65.7	15,930	70.0	67.2	15,710	75.0	66.8	13,910
65.0	64.3	17,960	70.0	64.0	16,000	75.0	63.7	14,390	75.0	65.4	14,170	80.0	65.1	12,560
70.0	62.0	16,150	75.0	61.8	14,480	80.0	61.7	13,070	80.0	63.5	12,850	85.0	63.3	11,410
75.0	59.6	14,630	80.0	59.6	13,160	85.0	59.7	11,920	85.0	61.6	11,680	90.0	61.5	10,400
80.0	57.2	13,310	85.0	57.4	12,010	90.0	57.6	10,910	90.0	59.7	10,670	95.0	59.7	9,500
85.0	54.7	12,160	90.0	55.1	11,000	95.0	55.4	10,000	95.0	57.7	9,780	100.0	57.8	8,700
90.0	52.2	11,170	95.0	52.7	10,110	100.0	53.2	9,210	100.0	55.7	8,990	105.0	55.9	8,000
95.0	49.5	10,290	100.0	50.3	9,320	105.0	50.9	8,500	105.0	53.6	8,260	110.0	54.0	7,340
100.0	46.8	9,500	105.0	47.7	8,640	110.0	48.6	7,870	110.0	51.5	7,620	115.0	52.0	6,760
105.0	43.9	8,790	110.0	45.1	8,000	115.0	46.1	7,290	115.0	49.3	7,050	120.0	49.9	6,230
110.0	40.8	8,170	115.0	42.3	7,420	120.0	43.6	6,760	120.0	47.0	6,520	125.0	47.8	5,700
115.0	37.5	7,620	120.0	39.4	6,920	125.0	40.9	6,280	125.0	44.7	6,040	130.0	45.6	5,220
120.0	34.0	7,120	125.0	36.2	6,450	130.0	38.1	5,860	130.0	42.2	5,570	135.0	43.3	4,780
125.0	30.1	6,650	130.0	32.8	6,040	135.0	35.0	5,440	135.0	39.6	5,150	140.0	40.9	4,380
130.0	25.7	6,260	135.0	29.1	5,660	140.0	31.8	5,070	140.0	36.9	4,760	145.0	38.4	4,030
135.0	20.5	5,900	140.0	24.8	5,330	145.0	28.1	4,710	145.0	34.0	4,380	150.0	35.8	3,680
						150.0	24.0	4,380	150.0	30.8	4,050	155.0	33.0	3,370
									155.0	27.3	3,760	160.0	29.9	3,100
									160.0	23.3	3,500	165.0	26.5	2,840
												170.0	22.6	2,620
Reeves		4	Reeves		4	Reeves		4	Reeves		4	Reeves		2
190' Boom			200' Boom											
Load Radius (ft)	Boom Angle (deg.)	360° Rated Load (lbs)	Load Radius (ft)	Boom Angle (deg.)	360° Rated Load (lbs)									
32.0	81.6	29,540 *	34.0	81.4	25,790 *									
34.0	81.0	28,880 *	36.0	80.9	25,350 *									
36.0	80.4	28,430 *	38.0	80.3	24,910 *									
38.0	79.8	27,990 *	40.0	79.7	24,470 *									
40.0	79.2	27,550 *	45.0	78.2	23,360 *									
45.0	77.6	26,450 *	50.0	76.8	22,480 *									
50.0	76.1	25,300	55.0	75.3	21,380 *									
55.0	74.5	22,110	60.0	73.8	19,310									
60.0	72.9	19,510	65.0	72.3	17,150									
65.0	71.3	17,350	70.0	70.8	15,320									
70.0	69.7	15,540	75.0	69.3	13,770									
75.0	68.1	13,990	80.0	67.7	12,430									
80.0	66.5	12,650	85.0	66.2	11,260									
85.0	64.8	11,500	90.0	64.6	10,250									
90.0	63.2	10,470	95.0	63.0	9,340									
95.0	61.4	9,560	100.0	61.4	8,530									
100.0	59.7	8,770	105.0	59.7	7,820									
105.0	57.9	8,040	110.0	58.1	7,160									
110.0	56.1	7,400	115.0	56.3	6,560									
115.0	54.3	6,810	120.0	54.6	5,970									
120.0	52.4	6,280	125.0	52.8	5,440									
125.0	50.5	5,750	130.0	51.0	4,960									
130.0	48.5	5,260	135.0	49.1	4,510									
135.0	46.4	4,800	140.0	47.2	4,100									
140.0	44.3	4,400	145.0	45.2	3,700									
145.0	42.1	4,010	150.0	43.1	3,350									
150.0	39.8	3,680	155.0	41.0	3,040									
155.0	37.4	3,350	160.0	38.7	2,730									
160.0	34.8	3,040												
165.0	32.0	2,770												
170.0	29.1	2,510												
Reeves		2	Reeves		2									

Note: Designed and rated to comply with ANSI Code B30.5
Capacities based on factors other than machine stability such as structural competence are shown by asterisk * in the charts.
Refer to notes on page 20.

CK850G-2

SPECIFICATIONS

Fixed Jib Lift Capacity

Full Counterweight: 57,590 lbs Carbody Weight: 14,340

80' Boom																	
Load Radius (ft)	30 ft Jib				40 ft Jib				50 ft Jib				60 ft Jib				Load Radius (ft)
	Offset Angle (deg.)				Offset Angle (deg.)				Offset Angle (deg.)				Offset Angle (deg.)				
	10		30		10		30		10		30		10		30		
	Boom Angle (deg.)	Rated Load (lbs)	Boom Angle (deg.)	Rated Load (lbs)	Boom Angle (deg.)	Rated Load (lbs)	Boom Angle (deg.)	Rated Load (lbs)	Boom Angle (deg.)	Rated Load (lbs)	Boom Angle (deg.)	Rated Load (lbs)	Boom Angle (deg.)	Rated Load (lbs)	Boom Angle (deg.)	Rated Load (lbs)	
30	79.3	24,000*															30
32	78.0	24,000*															32
34	77.0	24,000*			79.3	24,000*											34
36	75.9	24,000*			78.3	24,000*											36
38	74.9	24,000*	79.6	20,230*	77.4	24,000*			79.3	20,000*							38
40	73.8	24,000*	78.5	19,730*	76.4	24,000*			78.4	20,000*			79.8	18,000*			40
45	71.1	24,000*	75.7	18,600*	73.9	24,000*	79.7	15,360*	76.1	20,000*			77.7	17,940*			45
50	68.3	24,000*	72.8	17,610*	71.4	22,150*	77.1	14,480*	73.8	18,540*			75.6	16,330*			50
55	65.3	23,890	69.7	16,710*	68.7	20,280*	74.3	13,640*	71.3	16,950*	78.0	11,080*	73.3	14,900*			55
60	62.3	21,340	66.7	15,960*	66.1	18,800*	71.6	12,980*	68.9	15,690*	75.5	10,490*	71.2	13,750*	78.7	8,950*	60
65	59.3	19,200	63.6	15,290*	63.4	17,520*	68.8	12,360*	66.5	14,610*	73.0	9,980*	69.0	12,780*	76.4	8,480*	65
70	56.2	17,410	60.3	14,700*	60.6	16,400*	65.9	11,830*	64.0	13,660*	70.4	9,540*	66.7	11,900*	74.1	8,060*	70
75	52.8	15,780	56.7	14,150*	57.6	15,360*	62.7	11,350*	61.3	12,760*	67.6	9,100*	64.2	11,110*	71.5	7,670*	75
80	49.3	14,460	53.1	13,710*	54.6	14,520*	59.6	10,930*	58.7	12,030*	64.8	8,730*	61.9	10,440*	69.0	7,340*	80
85	45.7	13,330			51.5	13,470	56.3	10,560*	56.0	11,390*	62.0	8,420*	59.5	9,850*	66.5	7,030*	85
90	41.8	12,320			48.3	12,450	52.9	10,250*	53.2	10,800*	59.0	8,130*	57.0	9,320*	63.9	6,760*	90
95	37.2	11,370			44.6	11,500			50.0	10,250*	55.6	7,840*	54.2	8,810*	60.9	6,500*	95
100	32.4	10,600			40.8	10,710			46.9	9,780*	52.3	7,620*	51.5	8,390*	58.1	6,280*	100
105					36.7	10,000			43.6	9,360*			48.7	8,020*	55.0	6,100*	105
110									40.0	8,990*			45.7	7,670*	51.8	5,930*	110
115									35.8	8,640*			42.3	7,340*			115
120													38.8	7,050*			120
125													35.1	6,810*			125
Reeves	2		2		2		1		2		1		2		1		Reeves
90' Boom																	
Load Radius (ft)	30 ft Jib				40 ft Jib				50 ft Jib				60 ft Jib				Load Radius (ft)
	Offset Angle (deg.)				Offset Angle (deg.)				Offset Angle (deg.)				Offset Angle (deg.)				
	10		30		10		30		10		30		10		30		
	Boom Angle (deg.)	Rated Load (lbs)	Boom Angle (deg.)	Rated Load (lbs)	Boom Angle (deg.)	Rated Load (lbs)	Boom Angle (deg.)	Rated Load (lbs)	Boom Angle (deg.)	Rated Load (lbs)	Boom Angle (deg.)	Rated Load (lbs)	Boom Angle (deg.)	Rated Load (lbs)	Boom Angle (deg.)	Rated Load (lbs)	
32	79.1	24,000*															32
34	78.1	24,000*															34
36	77.1	24,000*			79.3	24,000*											36
38	76.2	24,000*			78.4	24,000*			80.0	20,000*							38
40	75.2	24,000*	79.5	20,170*	77.5	24,000*			79.2	20,000*							40
45	72.7	24,000*	77.0	19,060*	75.2	24,000*			77.1	20,000*			78.6	18,000*			45
50	70.2	24,000*	74.4	18,120*	72.9	23,320*	78.2	14,810*	75.0	19,400*			76.6	17,040*			50
55	67.5	23,690	71.6	17,210*	70.4	21,400*	75.6	14,020*	72.7	17,790*	78.9	11,300*	74.5	15,580*			55
60	64.9	21,120	68.9	16,460*	68.1	19,880*	73.2	13,330*	70.5	16,510*	76.7	10,730*	72.5	14,410*	79.5	9,100*	60
65	62.2	19,000	66.1	15,800*	65.6	18,560*	70.7	12,760*	68.3	15,380*	74.4	10,250*	70.5	13,400*	77.4	8,660*	65
70	59.4	17,190	63.3	15,210*	63.2	17,370	68.1	12,230*	66.1	14,390*	72.0	9,780*	68.4	12,520*	75.3	8,240*	70
75	56.4	15,560	60.2	14,660*	60.4	15,740	65.3	11,720*	63.6	13,490*	69.5	9,360*	66.1	11,680*	72.9	7,870*	75
80	53.5	14,240	57.1	14,190*	57.8	14,410	62.5	11,300*	61.3	12,720*	67.0	8,990*	64.0	11,000*	70.7	7,530*	80
85	50.4	13,090	53.9	13,330	55.1	13,240	59.7	10,930*	58.8	12,050*	64.5	8,680*	61.8	10,400*	68.4	7,230*	85
90	47.1	12,100			52.3	12,230	56.7	10,580*	56.3	11,440*	61.8	8,370*	59.5	9,850*	66.0	6,960*	90
95	43.4	11,150			49.1	11,280	53.4	10,270*	53.6	10,860*	58.9	8,110*	57.1	9,320*	63.4	6,700*	95
100	39.7	10,360			46.0	10,490			50.9	10,380*	56.1	7,870*	54.7	8,880*	60.9	6,480*	100
105	35.6	9,650			42.7	9,760			48.0	9,850	53.1	7,640*	52.2	8,480*	58.3	6,280*	105
110					39.1	9,120			45.0	9,210			49.6	8,110*	55.5	6,100*	110
115					35.0	8,500			41.7	8,570			46.7	7,760*	52.4	5,930*	115
120									38.2	8,040			43.8	7,450*			120
125									34.4	7,560			40.7	7,180*			125
130													37.4	6,940*			130
135													33.8	6,720*			135
Reeves	2		2		2		1		2		1		2		1		Reeves

Note: Designed and rated to comply with ANSI Code B30.5
 Capacities based on factors other than machine stability such as structural competence are shown by asterisk * in the charts.
 Refer to notes on page 20.

CK850G-2

SPECIFICATIONS

Fixed Jib Lift Capacity

Full Counterweight: 57,590 lbs Carbody Weight: 14,340

100' Boom																	
Load Radius (ft)	30 ft Jib				40 ft Jib				50 ft Jib				60 ft Jib				Load Radius (ft)
	Offset Angle (deg.)				Offset Angle (deg.)				Offset Angle (deg.)				Offset Angle (deg.)				
	10		30		10		30		10		30		10		30		
	Boom Angle (deg.)	Rated Load (lbs)	Boom Angle (deg.)	Rated Load (lbs)	Boom Angle (deg.)	Rated Load (lbs)	Boom Angle (deg.)	Rated Load (lbs)	Boom Angle (deg.)	Rated Load (lbs)	Boom Angle (deg.)	Rated Load (lbs)	Boom Angle (deg.)	Rated Load (lbs)	Boom Angle (deg.)	Rated Load (lbs)	
32	79.9	24,000*															32
34	79.0	24,000*															34
36	78.1	24,000*			80.0	24,000*											36
38	77.2	24,000*			79.2	24,000*											38
40	76.4	24,000*			78.4	24,000*			79.9	20,000*							40
45	74.1	24,000*	78.0	19,480*	76.3	24,000*			78.0	20,000*			79.3	18,000*			45
50	71.8	24,000*	75.7	18,560*	74.2	24,000*	79.1	15,100*	76.0	20,000*			77.5	17,680*			50
55	69.3	23,450	73.2	17,650*	71.9	22,480*	76.7	14,320*	73.9	18,580*	79.7	11,500*	75.5	16,200*			55
60	67.0	20,870	70.7	16,930*	69.7	20,920*	74.5	13,660*	71.9	17,260*	77.7	10,950*	73.7	15,030*			60
65	64.5	18,730	68.2	16,260*	67.5	18,950	72.2	13,090*	69.9	16,110*	75.5	10,470*	71.8	13,990*	78.3	8,810*	65
70	62.1	16,930	65.7	15,670*	65.3	17,150	69.9	12,560*	67.8	15,120*	73.4	10,030*	69.9	13,090*	76.3	8,420*	70
75	59.4	15,290	62.9	15,100*	62.8	15,490	67.3	12,050*	65.6	14,170*	71.1	9,610*	67.8	12,250*	74.2	8,040*	75
80	56.7	13,970	60.2	14,300	60.4	14,150	64.9	11,640*	63.4	13,380*	68.8	9,230*	65.8	11,550*	72.1	7,710*	80
85	54.0	12,830	57.4	13,110	58.0	13,000	62.4	11,260*	61.2	12,690*	66.5	8,920*	63.8	10,910*	70.0	7,420*	85
90	51.2	11,810	54.5	12,050	55.5	11,970	59.8	10,910*	59.0	12,050*	64.2	8,610*	61.7	10,360*	67.9	7,160*	90
95	48.1	10,860	51.2	11,060	52.8	11,020	56.9	10,580*	56.5	11,130	61.6	8,330*	59.5	9,810*	65.5	6,900*	95
100	45.0	10,070			50.1	10,200	54.0	10,310*	54.1	10,310	59.1	8,090*	57.3	9,340*	63.2	6,670*	100
105	41.7	9,360			47.2	9,500			51.6	9,590	56.4	7,870*	55.1	8,920*	60.9	6,450*	105
110	38.1	8,730			44.3	8,860			49.0	8,950	53.7	7,690*	52.7	8,550*	58.4	6,280*	110
115	34.0	8,130			40.9	8,220			46.1	8,310			50.2	8,170*	55.7	6,100*	115
120					37.4	7,690			43.2	7,780			47.7	7,820	53.1	5,950*	120
125					33.7	7,230			40.2	7,290			45.1	7,340			125
130									36.8	6,830			42.3	6,870			130
135									33.2	6,430			39.4	6,480			135
140													35.9	6,060			140
145													32.4	5,730			145
Reeves	2		2		2		1		2		1		2		1		Reeves
110' Boom																	
Load Radius (ft)	30 ft Jib				40 ft Jib				50 ft Jib				60 ft Jib				Load Radius (ft)
	Offset Angle (deg.)				Offset Angle (deg.)				Offset Angle (deg.)				Offset Angle (deg.)				
	10		30		10		30		10		30		10		30		
	Boom Angle (deg.)	Rated Load (lbs)	Boom Angle (deg.)	Rated Load (lbs)	Boom Angle (deg.)	Rated Load (lbs)	Boom Angle (deg.)	Rated Load (lbs)	Boom Angle (deg.)	Rated Load (lbs)	Boom Angle (deg.)	Rated Load (lbs)	Boom Angle (deg.)	Rated Load (lbs)	Boom Angle (deg.)	Rated Load (lbs)	
34	79.8	24,000															34
36	79.0	24,000															36
38	78.2	24,000			79.9	24,000*											38
40	77.3	24,000			79.2	24,000*											40
45	75.3	24,000	79.0	19,860*	77.2	24,000*			78.8	20,000*			80.0	18,000*			45
50	73.2	24,000	76.8	18,930*	75.3	24,000*	79.9	15,360*	76.9	20,000*			78.3	18,000*			50
55	70.9	23,320	74.5	18,070*	73.2	23,500*	77.7	14,610*	75.0	19,330*			76.4	16,820*			55
60	68.7	20,740	72.2	17,350*	71.2	20,960	75.6	13,970*	73.1	17,980*	78.5	11,150*	74.7	15,600*			60
65	66.5	18,580	70.0	16,680*	69.1	18,800	73.5	13,400*	71.2	16,820*	76.5	10,670*	72.9	14,570*	79.1	8,970*	65
70	64.3	16,770	67.7	16,090*	67.1	16,970	71.4	12,870*	69.3	15,800*	74.6	10,250*	71.1	13,640*	77.2	8,570*	70
75	61.8	15,140	65.1	15,520*	64.8	15,340	69.1	12,380*	67.2	14,830*	72.4	9,830*	69.2	12,780*	75.2	8,200*	75
80	59.4	13,820	62.7	14,170	62.7	13,990	66.9	11,940*	65.2	14,020*	70.4	9,470*	67.3	12,050*	73.3	7,890*	80
85	57.0	12,670	60.2	12,980	60.5	12,830	64.6	11,570*	63.2	12,960	68.3	9,140*	65.5	11,410*	71.4	7,580*	85
90	54.5	11,660	57.6	11,920	58.2	11,810	62.2	11,220*	61.2	11,920	66.1	8,840*	63.6	10,840*	69.4	7,310*	90
95	51.8	10,710	54.8	10,930	55.7	10,840	59.7	10,890*	58.9	10,950	63.8	8,550*	61.5	10,270*	67.2	7,050*	95
100	49.1	9,920	52.0	10,110	53.3	10,050	57.1	10,470	56.7	10,160	61.5	8,310*	59.5	9,780*	65.2	6,830*	100
105	46.3	9,210			50.8	9,320	54.5	9,700	54.5	9,430	59.2	8,090*	57.5	9,360*	63.0	6,630*	105
110	43.3	8,570			48.2	8,680	51.8	9,010	52.2	8,770	56.7	7,890*	55.4	8,840	60.9	6,430*	110
115	39.9	7,950			45.4	8,040			49.7	8,130	54.0	7,690*	53.1	8,200	58.4	6,260*	115
120	36.5	7,420			42.5	7,510			47.2	7,600			50.9	7,640	56.1	6,100*	120
125	32.7	6,960			39.4	7,050			44.5	7,120			48.6	7,160	53.6	5,970*	125
130					36.1	6,610			41.8	6,650			46.2	6,700			130
135					32.5	6,190			38.8	6,260			43.6	6,300			135
140									35.4	5,860			40.8	5,880			140
145													37.9	5,530			145
150													34.8	5,220			150
Reeves	2		2		2		1		2		1		2		1		Reeves

Note: Designed and rated to comply with ANSI Code B30.5

Capacities based on factors other than machine stability such as structural competence are shown by asterisk * in the charts.

Refer to notes on page 20.

CK850G-2

SPECIFICATIONS

Fixed Jib Lift Capacity

Full Counterweight: 57,590 lbs Carbody Weight: 14,340

120' Boom																	
Load Radius (ft)	30 ft Jib				40 ft Jib				50 ft Jib				60 ft Jib				Load Radius (ft)
	O set Angle (deg.)				O set Angle (deg.)				O set Angle (deg.)				O set Angle (deg.)				
	10		30		10		30		10		30		10		30		
	Boom Angle (deg.)	Rated Load (lbs)	Boom Angle (deg.)	Rated Load (lbs)	Boom Angle (deg.)	Rated Load (lbs)	Boom Angle (deg.)	Rated Load (lbs)	Boom Angle (deg.)	Rated Load (lbs)	Boom Angle (deg.)	Rated Load (lbs)	Boom Angle (deg.)	Rated Load (lbs)	Boom Angle (deg.)	Rated Load (lbs)	
36	79.7	24,000*															36
38	79.0	24,000*															38
40	78.2	24,000*			79.9	24,000*											40
45	76.3	24,000*	79.7	20,190*	78.1	24,000*			79.5	20,000*							45
50	74.3	24,000*	77.7	19,290*	76.2	24,000*			77.7	20,000*			78.9	18,000*			50
55	72.2	23,100	75.6	18,450*	74.3	23,360	78.5	14,880*	75.9	20,000*			77.2	17,390*			55
60	70.2	20,520	73.5	17,720*	72.4	20,760	76.6	14,240*	74.2	18,690*	79.2	11,330*	75.6	16,180*			60
65	68.2	18,360	71.4	17,080*	70.5	18,580	74.7	13,690*	72.4	17,500*	77.4	10,860*	73.9	15,120*	79.7	9,080*	65
70	66.1	16,550	69.3	16,490*	68.6	16,770	72.7	13,160*	70.6	16,440*	75.6	10,420*	72.2	14,170*	78.0	8,700*	70
75	63.9	14,920	67.0	15,340	66.5	15,100	70.6	12,670*	68.7	15,250	73.6	10,030*	70.4	13,290*	76.1	8,350*	75
80	61.7	13,600	64.8	13,970	64.5	13,770	68.5	12,250*	66.8	13,910	71.7	9,670*	68.7	12,560*	74.4	8,040*	80
85	59.5	12,430	62.6	12,780	62.5	12,610	66.4	11,860*	65.0	12,740	69.7	9,340*	67.0	11,900*	72.6	7,730*	85
90	57.3	11,410	60.2	11,720	60.5	11,570	64.3	11,500*	63.1	11,700	67.8	9,060*	65.2	11,300*	70.7	7,470*	90
95	54.8	10,470	57.7	10,730	58.2	10,620	62.0	11,130	61.0	10,730	65.6	8,770*	63.3	10,730*	68.7	7,230*	95
100	52.4	9,650	55.2	9,890	56.0	9,810	59.7	10,290	59.0	9,920	63.6	8,500*	61.5	9,980	66.8	7,010*	100
105	49.9	8,950	52.6	9,140	53.8	9,080	57.4	9,520	57.0	9,190	61.4	8,280*	59.6	9,250	64.9	6,790*	105
110	47.3	8,310			51.5	8,440	55.0	8,840	54.9	8,530	59.3	8,060*	57.7	8,590	62.9	6,610*	110
115	44.5	7,690			49.0	7,800	52.3	8,150	52.6	7,890	56.8	7,870*	55.6	7,950	60.7	6,410*	115
120	41.6	7,160			46.5	7,270			50.4	7,360	54.5	7,690*	53.6	7,400	58.6	6,260*	120
125	38.5	6,670			43.8	6,790			48.1	6,850	52.1	7,250	51.5	6,920	56.4	6,100*	125
130	35.3	6,230			41.1	6,320			45.7	6,410			49.3	6,450	54.1	5,970*	130
135	31.7	5,840			38.1	5,930			43.1	5,990			47.1	6,040	51.7	5,860*	135
140					34.7	5,530			40.3	5,590			44.6	5,640			140
145									37.4	5,240			42.2	5,290			145
150									34.3	4,910			39.6	4,960			150
155													36.8	4,650			155
160													33.6	4,340			160
Reeves	2		2		2		1		2		1		2		1		Reeves
130' Boom																	
Load Radius (ft)	30 ft Jib				40 ft Jib				50 ft Jib				60 ft Jib				Load Radius (ft)
	O set Angle (deg.)				O set Angle (deg.)				O set Angle (deg.)				O set Angle (deg.)				
	10		30		10		30		10		30		10		30		
	Boom Angle (deg.)	Rated Load (lbs)	Boom Angle (deg.)	Rated Load (lbs)	Boom Angle (deg.)	Rated Load (lbs)	Boom Angle (deg.)	Rated Load (lbs)	Boom Angle (deg.)	Rated Load (lbs)	Boom Angle (deg.)	Rated Load (lbs)	Boom Angle (deg.)	Rated Load (lbs)	Boom Angle (deg.)	Rated Load (lbs)	
38	79.7	24,000*															38
40	79.0	24,000*															40
45	77.1	24,000*			78.8	24,000*			80.0	20,000*							45
50	75.3	24,000*	78.5	19,620*	77.1	24,000*			78.4	20,000*			79.5	18,000*			50
55	73.4	22,880	76.5	18,780*	75.2	23,170	79.3	15,100*	76.7	20,000*			77.9	17,920*			55
60	71.5	20,300	74.6	18,070*	73.5	20,540	77.5	14,500*	75.1	19,330*	79.9	11,480*	76.3	16,710*			60
65	69.6	18,140	72.7	17,430*	71.7	18,380	75.7	13,930*	73.4	18,140*	78.2	11,020*	74.8	15,630*			65
70	67.7	16,330	70.7	16,860	69.9	16,550	73.8	13,420*	71.7	16,710	76.5	10,620*	73.2	14,680*	78.7	8,840*	70
75	65.6	14,680	68.6	15,140	68.0	14,880	71.8	12,940*	69.9	15,030	74.6	10,200*	71.5	13,800*	76.9	8,480*	75
80	63.6	13,350	66.6	13,770	66.2	13,550	69.9	12,520*	68.2	13,690	72.8	9,850*	69.9	13,050*	75.3	8,170*	80
85	61.6	12,210	64.5	12,580	64.3	12,380	68.0	12,140*	66.5	12,520	71.0	9,540*	68.3	12,360*	73.6	7,890*	85
90	59.6	11,170	62.4	11,530	62.4	11,350	66.1	11,770*	64.7	11,480	69.2	9,230*	66.6	11,570	71.9	7,620*	90
95	57.3	10,220	60.1	10,510	60.3	10,380	63.9	10,950	62.8	10,510	67.2	8,950*	64.8	10,580	70.0	7,360*	95
100	55.2	9,430	57.9	9,700	58.3	9,560	61.9	10,090	61.0	9,700	65.3	8,700*	63.1	9,760	68.3	7,140*	100
105	52.9	8,700	55.6	8,950	56.3	8,860	59.8	9,340	59.1	8,950	63.4	8,480*	61.4	9,030	66.5	6,940*	105
110	50.6	8,060	53.2	8,260	54.2	8,200	57.6	8,640	57.2	8,310	61.4	8,260*	59.6	8,370	64.6	6,740*	110
115	48.1	7,450			51.9	7,560	55.2	7,980	55.1	7,670	59.2	8,040*	57.7	7,730	62.6	6,560*	115
120	45.6	6,920			49.7	7,030	52.9	7,400	53.1	7,120	57.1	7,600	55.9	7,180	60.7	6,390*	120
125	43.0	6,430			47.4	6,540			51.0	6,630	54.9	7,070	54.0	6,670	58.7	6,230*	125
130	40.2	5,990			45.0	6,080			48.8	6,170	52.6	6,590	52.0	6,230	56.6	6,100*	130
135	37.3	5,570			42.5	5,680			46.6	5,750			50.0	5,820	54.5	5,970*	135
140	33.9	5,200			39.6	5,260			44.1	5,350			47.8	5,400	52.2	5,840	140
145					36.8	4,930			41.7	5,000			45.6	5,040			145
150					33.7	4,600			39.1	4,670			43.3	4,710			150
155									36.3	4,360			41.0	4,400			155
160									33.1	4,030			38.3	4,070			160
165													35.6	3,760			165
170													32.7	3,480			170
Reeves	2		2		2		1		2		1		2		1		Reeves

Note: Designed and rated to comply with ANSI Code B30.5
 Capacities based on factors other than machine stability such as structural competence are shown by asterisk * in the charts.
 Refer to notes on page 20.

CK850G-2

SPECIFICATIONS

Fixed Jib Lift Capacity

Full Counterweight: 57,590 lbs Carbody Weight: 14,340

140' Boom																	
Load Radius (ft)	30 ft Jib				40 ft Jib				50 ft Jib				60 ft Jib				Load Radius (ft)
	O set Angle (deg.)				O set Angle (deg.)				O set Angle (deg.)				O set Angle (deg.)				
	10		30		10		30		10		30		10		30		
	Boom Angle (deg.)	Rated Load (lbs)	Boom Angle (deg.)	Rated Load (lbs)	Boom Angle (deg.)	Rated Load (lbs)	Boom Angle (deg.)	Rated Load (lbs)	Boom Angle (deg.)	Rated Load (lbs)	Boom Angle (deg.)	Rated Load (lbs)	Boom Angle (deg.)	Rated Load (lbs)	Boom Angle (deg.)	Rated Load (lbs)	
40	79.6	24,000*															40
45	77.9	24,000*			79.4	24,000*											45
50	76.2	24,000*	79.2	19,900*	77.8	24,000*			79.1	20,000*							50
55	74.4	22,680	77.4	19,090*	76.1	22,970	79.9	15,320*	77.4	20,000*			78.5	18,000*			55
60	72.6	20,080	75.6	18,400*	74.4	20,340	78.2	14,720*	75.9	19,970*			77.0	17,210*			60
65	70.9	17,940	73.8	17,760*	72.8	18,180	76.5	14,170*	74.3	18,360	78.8	11,170*	75.6	16,130*			65
70	69.1	16,110	72.0	16,680	71.1	16,330	74.8	13,690*	72.8	16,510	77.2	10,780*	74.1	15,160*	79.3	8,950*	70
75	67.2	14,460	70.0	14,960	69.3	14,680	72.9	13,180*	71.1	14,830	75.5	10,380*	72.5	14,260*	77.7	8,590*	75
80	65.3	13,130	68.1	13,600	67.6	13,330	71.2	12,760*	69.4	13,490	73.8	10,030*	71.0	13,490*	76.1	8,310*	80
85	63.5	11,970	66.2	12,380	65.9	12,160	69.4	12,380*	67.8	12,300	72.1	9,720*	69.4	12,410	74.5	8,020*	85
90	61.6	10,950	64.3	11,330	64.1	11,130	67.6	11,810	66.2	11,260	70.4	9,430*	67.9	11,350	72.9	7,760*	90
95	59.5	9,980	62.2	10,310	62.2	10,160	65.6	10,780	64.4	10,290	68.6	9,120*	66.2	10,380	71.2	7,510*	95
100	57.5	9,190	60.1	9,500	60.3	9,340	63.7	9,920	62.7	9,470	66.8	8,880*	64.6	9,540	69.5	7,270*	100
105	55.5	8,460	58.1	8,750	58.5	8,610	61.8	9,140	60.9	8,730	65.0	8,660*	63.0	8,810	67.8	7,070*	105
110	53.4	7,820	55.9	8,060	56.6	7,950	59.8	8,460	59.2	8,060	63.2	8,440*	61.4	8,150	66.1	6,870*	110
115	51.1	7,180	53.5	7,400	54.5	7,340	57.6	7,780	57.2	7,420	61.2	8,000	59.6	7,490	64.3	6,700*	115
120	48.9	6,650	51.3	6,850	52.5	6,790	55.5	7,200	55.4	6,900	59.3	7,420	57.9	6,960	62.5	6,520*	120
125	46.6	6,170			50.4	6,300	53.4	6,670	53.5	6,390	57.3	6,900	56.1	6,450	60.7	6,370*	125
130	44.2	5,730			48.2	5,840			51.6	5,930	55.3	6,390	54.3	5,990	58.8	6,230*	130
135	41.7	5,330			46.0	5,420			49.5	5,510	53.1	5,950	52.5	5,570	56.9	6,100*	135
140	38.8	4,910			43.5	5,020			47.3	5,090			50.5	5,150	54.7	5,640	140
145	36.0	4,560			41.1	4,670			45.1	4,730			48.5	4,800	52.7	5,240	145
150	32.9	4,210			38.5	4,320			42.9	4,400			46.5	4,470			150
155					35.7	3,940			40.5	4,030			44.4	4,100			155
160					32.5	3,610			37.8	3,680			42.0	3,720			160
165									35.1	3,370			39.7	3,410			165
170									32.2	3,080			37.3	3,130			170
175													34.6	2,840			175
Reeves	2		2		2		1		2		1		2		1		Reeves
150' Boom																	
Load Radius (ft)	30 ft Jib				40 ft Jib				50 ft Jib				60 ft Jib				Load Radius (ft)
	O set Angle (deg.)				O set Angle (deg.)				O set Angle (deg.)				O set Angle (deg.)				
	10		30		10		30		10		30		10		30		
	Boom Angle (deg.)	Rated Load (lbs)	Boom Angle (deg.)	Rated Load (lbs)	Boom Angle (deg.)	Rated Load (lbs)	Boom Angle (deg.)	Rated Load (lbs)	Boom Angle (deg.)	Rated Load (lbs)	Boom Angle (deg.)	Rated Load (lbs)	Boom Angle (deg.)	Rated Load (lbs)	Boom Angle (deg.)	Rated Load (lbs)	
45	78.6	24,000*			80.0	24,000*											45
50	77.0	24,000*	79.9	20,170*	78.5	24,000*			79.6	20,000*							50
55	75.3	22,530	78.1	19,370*	76.8	22,810			78.1	20,000*			79.1	18,000*			55
60	73.6	19,920	76.4	18,690*	75.3	20,190	78.9	14,920*	76.6	20,000*			77.7	17,700*			60
65	72.0	17,790	74.8	18,070*	73.7	18,030	77.3	14,390*	75.1	18,200	79.4	11,330*	76.3	16,600*			65
70	70.3	15,960	73.1	16,550	72.1	16,180	75.7	13,910*	73.7	16,350	77.9	10,930*	74.9	15,650*	79.9	9,060*	70
75	68.5	14,300	71.2	14,830	70.5	14,520	73.9	13,420*	72.1	14,680	76.3	10,530*	73.4	14,720*	78.3	8,700*	75
80	66.8	12,980	69.5	13,470	68.8	13,180	72.3	13,000*	70.5	13,330	74.7	10,200*	71.9	13,420	76.8	8,420*	80
85	65.1	11,810	67.7	12,250	67.2	12,010	70.6	12,630*	69.0	12,140	73.1	9,870*	70.5	12,230	75.3	8,130*	85
90	63.3	10,800	65.9	11,190	65.6	10,970	68.9	11,680	67.5	11,110	71.5	9,590*	69.0	11,190	73.8	7,890*	90
95	61.4	9,830	63.9	10,180	63.8	10,000	67.1	10,670	65.8	10,110	69.8	9,300*	67.4	10,200	72.2	7,620*	95
100	59.6	9,010	62.1	9,340	62.1	9,190	65.3	9,810	64.2	9,300	68.2	9,060*	65.9	9,390	70.6	7,400*	100
105	57.7	8,310	60.2	8,590	60.4	8,460	63.5	9,030	62.6	8,570	66.5	8,810*	64.4	8,640	69.1	7,200*	105
110	55.8	7,640	58.2	7,910	58.6	7,800	61.7	8,330	60.9	7,910	64.8	8,570	62.9	7,980	67.5	7,010*	110
115	53.7	7,030	56.1	7,270	56.7	7,160	59.7	7,670	59.1	7,270	62.9	7,890	61.2	7,340	65.7	6,830*	115
120	51.7	6,500	54.0	6,700	54.8	6,610	57.8	7,090	57.4	6,720	61.2	7,290	59.6	6,790	64.1	6,650*	120
125	49.6	5,990	51.8	6,190	52.9	6,120	55.8	6,560	55.7	6,210	59.3	6,760	58.0	6,280	62.4	6,500*	125
130	47.5	5,550			51.0	5,660	53.8	6,080	53.9	5,750	57.5	6,280	56.3	5,820	60.7	6,370*	130
135	45.3	5,150			49.0	5,260			52.0	5,330	55.6	5,820	54.6	5,400	58.9	5,970	135
140	42.8	4,730			46.7	4,850			50.0	4,930	53.4	5,350	52.8	4,980	57.0	5,530	140
145	40.3	4,320			44.6	4,450			48.1	4,560			51.0	4,620	55.1	5,130	145
150	37.8	3,940			42.3	4,050			46.1	4,160			49.2	4,230	53.1	4,760	150
155	35.0	3,590			39.9	3,700			43.9	3,790			47.3	3,850			155
160	31.8	3,260			37.3	3,350			41.6	3,430			45.2	3,480			160
165					34.6	3,040			39.3	3,100			43.1	3,170			165
170									36.8	2,820			41.0	2,860			170
175									34.2	2,550			38.7	2,600			175
Reeves	2		2		2		1		2		1		2		1		Reeves

Note: Designed and rated to comply with ANSI Code B30.5
 Capacities based on factors other than machine stability such as structural competence are shown by asterisk * in the charts.
 Refer to notes on page 20.

CK850G-2

SPECIFICATIONS

Fixed Jib Lift Capacity

Full Counterweight: 57,590 lbs Carbody Weight: 14,340

160' Boom																	
Load Radius (ft)	30 ft Jib				40 ft Jib				50 ft Jib				60 ft Jib				Load Radius (ft)
	Offset Angle (deg.)				Offset Angle (deg.)				Offset Angle (deg.)				Offset Angle (deg.)				
	10		30		10		30		10		30		10		30		
	Boom Angle (deg.)	Rated Load (lbs)	Boom Angle (deg.)	Rated Load (lbs)	Boom Angle (deg.)	Rated Load (lbs)	Boom Angle (deg.)	Rated Load (lbs)	Boom Angle (deg.)	Rated Load (lbs)	Boom Angle (deg.)	Rated Load (lbs)	Boom Angle (deg.)	Rated Load (lbs)	Boom Angle (deg.)	Rated Load (lbs)	
45	79.2	24,000*															45
50	77.7	24,000*			79.0	22,830*											50
55	76.1	22,350	78.8	19,640*	77.5	22,000*			78.7	20,000*			79.6	18,000*			55
60	74.5	19,750	77.2	18,950*	76.0	20,030	79.5	15,120*	77.3	19,200*			78.3	17,800*			60
65	73.0	17,590	75.6	18,290	74.6	17,850	78.0	14,590*	75.9	18,030	80.0	11,440*	76.9	17,060*			65
70	71.4	15,760	74.0	16,400	73.1	16,000	76.4	14,100*	74.5	16,180	78.5	11,060*	75.6	16,090*			70
75	69.7	14,100	72.3	14,680	71.5	14,320	74.8	13,640*	72.9	14,500	77.0	10,670*	74.2	14,610	78.9	8,810*	75
80	68.1	12,780	70.7	13,290	70.0	12,980	73.2	13,220*	71.5	13,130	75.5	10,330*	72.8	13,240	77.5	8,530*	80
85	66.5	11,610	69.0	12,080	68.4	11,810	71.7	12,630	70.1	11,940	74.0	10,030*	71.4	12,050	76.1	8,240*	85
90	64.8	10,580	67.3	11,020	66.9	10,780	70.1	11,530	68.6	10,910	72.5	9,740*	70.0	11,000	74.6	8,000*	90
95	63.0	9,630	65.5	10,000	65.2	9,780	68.4	10,510	67.0	9,920	70.9	9,450*	68.5	10,000	73.1	7,760*	95
100	61.3	8,810	63.8	9,170	63.6	8,970	66.7	9,650	65.5	9,100	69.3	9,210*	67.1	9,190	71.6	7,530*	100
105	59.6	8,090	62.0	8,420	62.0	8,240	65.1	8,880	64.0	8,370	67.8	8,970*	65.7	8,440	70.2	7,310*	105
110	57.9	7,450	60.2	7,730	60.4	7,580	63.4	8,170	62.5	7,690	66.2	8,420	64.2	7,780	68.7	7,140*	110
115	55.9	6,810	58.2	7,070	58.6	6,940	61.5	7,490	60.8	7,050	64.5	7,730	62.7	7,140	67.0	6,940*	115
120	54.1	6,280	56.3	6,520	56.9	6,410	59.8	6,920	59.2	6,500	62.8	7,140	61.2	6,590	65.5	6,790*	120
125	52.2	5,770	54.4	5,990	55.1	5,900	58.0	6,390	57.6	6,010	61.1	6,610	59.7	6,080	63.9	6,610*	125
130	50.3	5,330	52.4	5,530	53.3	5,440	56.1	5,900	55.9	5,550	59.4	6,100	58.1	5,620	62.3	6,280	130
135	48.2	4,890			51.5	5,020	54.2	5,440	54.2	5,130	57.6	5,640	56.5	5,180	60.7	5,820	135
140	46.0	4,400			49.5	4,560	52.1	5,000	52.4	4,670	55.7	5,200	54.8	4,760	58.9	5,350	140
145	43.9	4,010			47.5	4,140			50.6	4,250	53.8	4,800	53.2	4,320	57.1	4,960	145
150	41.6	3,610			45.5	3,740			48.7	3,850	51.9	4,430	51.5	3,920	55.4	4,580	150
155	39.3	3,260			43.4	3,370			46.8	3,480			49.7	3,540	53.6	4,230	155
160	36.6	2,910			41.1	3,020			44.8	3,100			47.8	3,170	51.5	3,810	160
165	33.9	2,600			38.8	2,710			42.7	2,790			46.0	2,860			165
170													44.1	2,550			170
Reeves	2		2		2		1		2		1		2		1		Reeves
170' Boom																	
Load Radius (ft)	30 ft Jib				40 ft Jib				50 ft Jib				60 ft Jib				Load Radius (ft)
	Offset Angle (deg.)				Offset Angle (deg.)				Offset Angle (deg.)				Offset Angle (deg.)				
	10		30		10		30		10		30		10		30		
	Boom Angle (deg.)	Rated Load (lbs)	Boom Angle (deg.)	Rated Load (lbs)	Boom Angle (deg.)	Rated Load (lbs)	Boom Angle (deg.)	Rated Load (lbs)	Boom Angle (deg.)	Rated Load (lbs)	Boom Angle (deg.)	Rated Load (lbs)	Boom Angle (deg.)	Rated Load (lbs)	Boom Angle (deg.)	Rated Load (lbs)	
45	79.8	23,360*															45
50	78.3	22,830*			79.6	20,800*											50
55	76.8	22,150	79.4	19,860*	78.1	20,000*			79.2	18,500*			80.0	17,000*			55
60	75.3	19,550	77.9	19,220*	76.7	19,200*	80.0	15,290*	77.9	17,800*			78.8	16,400*			60
65	73.8	17,370	76.4	18,120	75.3	17,630	78.6	14,770*	76.5	17,100*			77.5	15,800*			65
70	72.4	15,560	74.9	16,220	73.9	15,800	77.1	14,300*	75.2	15,980	79.1	11,170*	76.2	15,200*			70
75	70.8	13,880	73.2	14,500	72.4	14,130	75.6	13,840*	73.8	14,280	77.6	10,800*	74.9	13,980*	79.4	8,900*	75
80	69.3	12,560	71.7	13,090	71.0	12,760	74.1	13,420*	72.4	12,940	76.2	10,490*	73.6	13,050	78.1	8,610*	80
85	67.7	11,390	70.1	11,880	69.5	11,590	72.6	12,450	71.0	11,750	74.8	10,180*	72.3	11,860	76.7	8,350*	85
90	66.2	10,360	68.6	10,820	68.1	10,560	71.1	11,370	69.6	10,690	73.4	9,890*	71.0	10,800	75.4	8,110*	90
95	64.5	9,390	66.9	9,810	66.5	9,560	69.5	10,330	68.2	9,720	71.9	9,610*	69.5	9,810	73.9	7,870*	95
100	62.9	8,590	65.2	8,970	65.0	8,750	68.0	9,470	66.7	8,880	70.4	9,360*	68.2	8,970	72.5	7,640*	100
105	61.3	7,870	63.6	8,220	63.5	8,020	66.4	8,680	65.3	8,150	68.9	8,970	66.8	8,220	71.1	7,450*	105
110	59.7	7,200	61.9	7,530	61.9	7,360	64.8	8,000	63.9	7,470	67.4	8,240	65.5	7,560	69.7	7,250*	110
115	57.9	6,560	60.1	6,870	60.3	6,720	63.1	7,310	62.3	6,830	65.8	7,560	64.0	6,920	68.2	7,050*	115
120	56.2	6,040	58.3	6,300	58.7	6,170	61.5	6,720	60.8	6,280	64.3	6,960	62.6	6,340	66.7	6,900*	120
125	54.4	5,550	56.5	5,790	57.0	5,680	59.8	6,190	59.3	5,770	62.7	6,410	61.1	5,860	65.2	6,610	125
130	52.6	5,070	54.7	5,310	55.4	5,220	58.1	5,700	57.7	5,310	61.1	5,930	59.7	5,370	63.7	6,100	130
135	50.8	4,560	52.8	4,850	53.7	4,730	56.4	5,260	56.1	4,870	59.5	5,460	58.2	4,960	62.2	5,640	135
140	48.8	4,070			51.8	4,230	54.4	4,820	54.4	4,360	57.7	5,000	56.6	4,450	60.5	5,180	140
145	46.9	3,650			50.1	3,810	52.6	4,360	52.8	3,920	56.0	4,620	55.1	4,010	58.9	4,780	145
150	44.8	3,280			48.2	3,410			51.1	3,520	54.2	4,160	53.5	3,610	57.3	4,380	150
155	42.7	2,930			46.3	3,060			49.3	3,150	52.4	3,760	51.9	3,240	55.6	3,960	155
160	40.4	2,570			44.2	2,680			47.4	2,790			50.2	2,860	53.8	3,540	160
165													48.5	2,530	52.0	3,170	165
Reeves	2		2		2		1		2		1		1		1		Reeves

Note: Designed and rated to comply with ANSI Code B30.5
 Capacities based on factors other than machine stability such as structural competence are shown by asterisk * in the charts.
 Refer to notes on page 20.

CK850G-2

SPECIFICATIONS

Fixed Jib Lift Capacity

Full Counterweight: 57,590 lbs Carbody Weight: 14,340

180' Boom																	
Load Radius (ft)	30 ft Jib				40 ft Jib				50 ft Jib				60 ft Jib				Load Radius (ft)
	O set Angle (deg.)				O set Angle (deg.)				O set Angle (deg.)				O set Angle (deg.)				
	10		30		10		30		10		30		10		30		
	Boom Angle (deg.)	Rated Load (lbs)	Boom Angle (deg.)	Rated Load (lbs)	Boom Angle (deg.)	Rated Load (lbs)	Boom Angle (deg.)	Rated Load (lbs)	Boom Angle (deg.)	Rated Load (lbs)	Boom Angle (deg.)	Rated Load (lbs)	Boom Angle (deg.)	Rated Load (lbs)	Boom Angle (deg.)	Rated Load (lbs)	
50	78.9	19,770*															50
55	77.4	19,240*	79.9	19,060*	78.7	18,500*			79.7	17,000*							55
60	76.0	18,760*	78.5	18,580*	77.3	17,800*			78.4	16,400*			79.3	15,000*			60
65	74.6	17,190	77.1	17,960	76.0	17,100*	79.1	14,740*	77.1	15,800*			78.0	14,500*			65
70	73.2	15,360	75.6	16,070	74.7	15,630	77.7	14,460*	75.9	15,200*	79.6	11,300*	76.8	14,000*			70
75	71.7	13,710	74.1	14,350	73.2	13,950	76.3	14,020*	74.5	13,980*	78.2	10,930*	75.5	13,500*	79.9	8,990*	75
80	70.3	12,360	72.6	12,940	71.9	12,580	74.9	13,580	73.2	12,760	76.9	10,600*	74.3	12,870	78.6	8,700*	80
85	68.8	11,190	71.2	11,720	70.5	11,410	73.5	12,320	71.9	11,570	75.5	10,310*	73.0	11,680	77.3	8,460*	85
90	67.4	10,180	69.7	10,640	69.1	10,360	72.1	11,220	70.6	10,510	74.2	10,030*	71.8	10,620	76.0	8,200*	90
95	65.8	9,190	68.1	9,630	67.6	9,390	70.5	10,180	69.2	9,520	72.7	9,740*	70.4	9,630	74.6	7,950*	95
100	64.3	8,390	66.5	8,790	66.2	8,570	69.1	9,320	67.8	8,700	71.4	9,500*	69.2	8,790	73.3	7,760*	100
105	62.8	7,670	65.0	8,040	64.8	7,820	67.6	8,550	66.5	7,950	70.0	8,810	67.9	8,040	72.0	7,530*	105
110	61.3	7,010	63.4	7,360	63.3	7,160	66.1	7,840	65.1	7,290	68.5	8,110	66.6	7,360	70.7	7,360*	110
115	59.6	6,370	61.7	6,670	61.8	6,520	64.5	7,160	63.6	6,630	67.0	7,400	65.2	6,720	69.2	7,160*	115
120	58.0	5,840	60.1	6,120	60.3	5,970	63.0	6,560	62.2	6,080	65.6	6,810	63.8	6,170	67.8	7,010*	120
125	56.4	5,310	58.4	5,590	58.8	5,460	61.4	6,040	60.8	5,570	64.1	6,260	62.5	5,660	66.4	6,480	125
130	54.7	4,780	56.7	5,110	57.2	4,960	59.8	5,550	59.3	5,090	62.6	5,770	61.1	5,180	65.0	5,970	130
135	53.0	4,270	55.0	4,580	55.6	4,450	58.2	5,090	57.8	4,580	61.1	5,310	59.7	4,670	63.6	5,480	135
140	51.2	3,790	53.1	4,070	53.9	3,940	56.4	4,580	56.2	4,070	59.4	4,850	58.2	4,160	62.0	5,020	140
145	49.4	3,370	51.3	3,610	52.3	3,520	54.7	4,120	54.7	3,630	57.8	4,380	56.8	3,720	60.5	4,620	145
150	47.6	2,970			50.6	3,130	53.0	3,680	53.1	3,240	56.2	3,940	55.3	3,320	59.0	4,160	150
155	45.7	2,600			48.8	2,750			51.5	2,860	54.5	3,520	53.8	2,930	57.5	3,740	155
160											52.7	3,100	52.2	2,550	55.8	3,320	160
165															54.1	2,950	165
170															52.4	2,600	170
Reeves	2		2		2		1		1		1		1		1		Reeves

Note: Designed and rated to comply with ANSI Code B30.5
 Capacities based on factors other than machine stability such as structural competence are shown by asterisk * in the charts.
 Refer to notes on page 20.

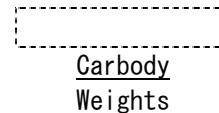
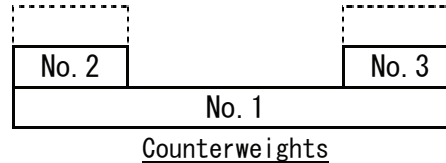
Supplemental Data - Clamshell

1. Rated loads included in the charts are the maximum allowable freely suspended loads at a given boom length, boom angle and load radius, and have been determined for the machine standing level on firm supporting surface under ideal operating conditions. The user must limit or de-rate rated loads to allow for adverse conditions (such as soft or uneven ground, out-of-level conditions, wind, side loads, pendulum action, jerking or sudden stopping of loads, inexperience of personnel, multiple machine lifts, and traveling with a load).
2. Rated loads do not exceed 66% of minimum tipping loads. Rated loads based on factors other than machine stability such as structural competence are shown by asterisk * in the charts.
3. The machine must be reeved and set-up as stated in the operation manual and all the instruction manuals if these manuals are missing, obtain replacements.
 - Boom backstops are required for all boom length.
 - Gantry must be fully raised position for all operations.
 - Crawlers must be fully extended and be locked in position.
 - The crane must be leveled to within 1% on a firm supporting surface.
 - Must have 39,000 lbs (2) Counterweights installed, and without carbody weights.
4. Do not attempt to lift where no radius on load is listed as crane may tip or collapse.
5. Attempting to lift more than rated loads may cause machine to tip or collapse. Do not tip machine to determine rated loads.
6. Weight of bucket, slings and other lifting devices are a part of the total load. Their total weight must be subtracted from the rated load to obtain the weight that can be lifted.
7. Bucket weight must also be decreased according to operating cycle and bucket lowering height. Rated loads are determined by stability and boom strength
During simultaneous operations of boom and swing, rapid acceleration or deceleration must be avoided. Do not attempt to cast the bucket while swinging or diagonal draw-cutting.
8. The boom should be erected over the front of the crawlers, not laterally.
9. Least stable position is over the side.
10. Maximum hoist load for number of reeving parts of line for hoist rope.

Maximum Load for Main Boom

No. of Parts of line	1
Maximum Loads (lbs)	16,000

11. Rated loads listed apply only to the machine as originally manufactured and designed by KOBELCO CONSTRUCTION MACHINERY CO., LTD. Modifications to this machine or use of equipment other than that specified can reduce operating capacity.
12. Assembling the Counterweight
39,000 lbs counterweight (No. 1 ~ No. 3)
Without Carbody weights



Operation of this equipment in excess of rated loads or disregard of instruction voids the warranty.

Clamshell

Boom:

Welded lattice construction using tubular, high-tensile steel chords with pin connections between each section.

Basic boom length: 40 ft (12.2 m)

Max. boom length: 70 ft (21.3 m)

Limit on clamshell bucket weight: 4,600 lbs (2,100 kg)

Optional tagline: Hydraulic operated type and spring type.

Boom Component Chart:

Boom length ft (m)	Boom arrangement
40 (12.2)	Base-Tip
50 (15.2)	Base-A-Tip
60 (18.3)	Base-A-A-Tip, Base-B-Tip
70 (21.3)	Base-A-B-Tip

Base = Boom Base

Insert: A = 10 ft (3.05 m)

B = 20 ft (6.10 m)

C = 40 ft (12.2 m)

Tip = Boom Tip

- Figures represent maximum allowable capacity, and assume level, ground and ideal working conditions.
- Capacities are calculated at 66% of the minimum tipping loads.
- Capacities are maximum recommended by PCSA Standard #4. Allowances must be made by the user for such unfavorable conditions as a sort of uneven supporting surface, rapid cycle operations, or bucket.
- The combined weight of the bucket and load must not exceed these capacities.

3 Counterweights (39,070 lbs) - Without Carbody weights - Crawlers in extended position.

40' Boom			50' Boom			60' Boom			70' Boom		
Load Radius (ft)	Boom Angle (deg.)	360° Rated Load (lbs)	Load Radius (ft)	Boom Angle (deg.)	360° Rated Load (lbs)	Load Radius (ft)	Boom Angle (deg.)	360° Rated Load (lbs)	Load Radius (ft)	Boom Angle (deg.)	360° Rated Load (lbs)
22.0	63.6	16,000 *	26.0	64.2	16,000 *	30.0	64.5	16,000 *	34.0	64.8	16,000 *
24.0	60.3	16,000 *	28.0	61.6	16,000 *	32.0	62.4	16,000 *	36.0	63.0	16,000 *
26.0	56.9	16,000 *	30.0	58.9	16,000 *	34.0	60.2	16,000 *	38.0	61.1	16,000 *
28.0	53.4	16,000 *	32.0	56.2	16,000 *	36.0	58.0	16,000 *	40.0	59.2	16,000 *
30.0	49.7	16,000 *	34.0	53.3	16,000 *	38.0	55.7	16,000 *	42.0	57.3	16,000 *
32.0	45.7	16,000 *	36.0	50.4	16,000 *	40.0	53.3	16,000 *	44.0	55.3	15,800 *
34.0	41.5	16,000 *	38.0	47.3	16,000 *	42.0	50.9	16,000 *	46.0	53.3	15,600 *
36.0	36.9	16,000 *	40.0	44.1	16,000 *	44.0	48.3	16,000 *	48.0	51.2	15,200 *
38.0	31.6	16,000 *	42.0	40.6	16,000 *	46.0	45.7	16,000 *	50.0	49.0	14,300 *
40.0	25.5	16,000 *	44.0	36.9	16,000 *	48.0	42.9	15,200 *	52.0	46.8	13,600 *
			46.0	32.8	16,000 *	50.0	40.0	14,500	54.0	44.5	13,000 *
			48.0	28.2	15,400 *	52.0	36.9	13,600	56.0	42.1	12,300 *
						54.0	33.5	13,000	58.0	39.6	11,600 *
						56.0	29.8	12,300	60.0	36.9	11,200 *
						58.0	25.6	11,900	62.0	34.0	10,800 *
									64.0	30.9	10,100 *
									66.0	27.5	9,700 *

Supplemental Data - Barge

- Rated loads included in the charts are the maximum allowable freely suspended loads at a given boom length, boom angle and load radius, and have been determined for the machine standing level on firm supporting surface under ideal operating conditions. The user must limit or de-rate rated loads to allow for adverse conditions (such as soft or uneven ground, out-of-level conditions, wind, side loads, pendulum action, jerking or sudden stopping of loads, inexperience of personnel, multiple machine lifts, and traveling with a load).
- Rated loads do not exceed 75% of minimum tipping loads. Rated loads based on factors other than machine stability such as structural competence are shown by asterisk * in the charts.
- The machine must be reeved and set-up as stated in the operation manual and all the instruction manuals if these manuals are missing, obtain replacements.
 - Machine shall be positively secured to prevent shifting.
 - Boom backstops are required for all boom length.
 - Gantry must be fully raised position for all operations.
 - Crawlers must be fully extended and be locked in position.
 - Must have 57,590 lbs (5) Counterweights fully installed.
 - Must have 14,340 lbs (2) Carbody weights fully installed.
- Do not attempt to lift where no radius on load is listed as crane may tip or collapse.
- Attempting to lift more than rated loads may cause machine to tip or collapse. Do not tip machine to determine rated loads.
- Weight of hooks, hook blocks, slings and other lifting devices are a part of the total load. Their total weight must be subtracted from the rated load to obtain the weight that can be lifted.
- When lifting over boom point with jib or auxiliary sheave, rated loads for the boom must be deducted as shown below.

Jib Length	Aux Sheave	30 ft	40 ft	50 ft	60 ft
Deduct (lbs)	320	Not Applicable			

When auxiliary sheave is used for 10 or 9 reeving parts of line, it is not required to deduct 320 lbs from rated loads.

- To install the jib is prohibited when the machine is on a barge.
- The total load that can be lifted over an auxiliary sheave is the value for 320 lbs deducted from rated load for the boom without auxiliary sheave, but it should not exceed 17,000 lbs.

- Boom lengths that can attach auxiliary sheave are from 40 ft (12.2 m) to 190 ft (57.9 m).
- The boom should be erected over the front of the crawlers, not laterally.
- Least stable position is over the side.
- Maximum hoist load for number of reeving parts of line for hoist rope.

Maximum Load for Main Boom

No. of Parts of line	1	2	4	5
Maximum Loads (lbs)	17,000	34,000	68,000	85,000

No. of Parts of line	6	7	8	9*	10*
Maximum Loads (lbs)	102,000	119,000	136,000	153,000	170,000

* - Use auxiliary sheave.

Maximum Load for Auxiliary Sheave

No. of Parts of line	1
Maximum Loads (lbs)	17,000

- Weight of recommended hook block.

Hook Block	85 t	55 t	35 t	21 t	7 t ball hook
Weight (lbs)	1,765	1,545	1,105	885	355

Warning: If the weight of the hook block to be used is lighter than the recommended weight, the jib may turn over backward or will be difficult to lower the empty hook block.

- Rated loads listed apply only to the machine as originally manufactured and designed by KOBELCO CONSTRUCTION MACHINERY CO., LTD. Modifications to this machine or use of equipment other than that specified can reduce operating capacity.

Operation of this equipment in excess of rated loads or disregard of instruction voids the warranty.

CK850G-2

SPECIFICATIONS

Barge

5 Counterweights (57,590 lbs) - 2 Carbody weights (14,340 lbs) - Crawlers in extended position.

40' Boom					50' Boom					60' Boom							
		360° Rated Load (lbs)						360° Rated Load (lbs)						360° Rated Load (lbs)			
Load Radius (ft)	Boom Angle (deg.)	0 Degree Machine List	1 Degree Machine List	2 Degree Machine List	3 Degree Machine List	Load Radius (ft)	Boom Angle (deg.)	0 Degree Machine List	1 Degree Machine List	2 Degree Machine List	3 Degree Machine List	Load Radius (ft)	Boom Angle (deg.)	0 Degree Machine List	1 Degree Machine List	2 Degree Machine List	3 Degree Machine List
10.0	81.7	170,000 *				12.0	81.1	166,400 *				13.0	81.6	154,200 *			
11.0	80.3	170,000 *				13.0	79.9	154,400 *				14.0	80.7	143,800 *			
12.0	78.8	266,600 *				14.0	78.8	144,000 *				15.0	79.7	134,700 *			
13.0	77.4	154,600 *				15.0	77.6	134,900 *				16.0	78.7	126,700 *			
14.0	75.9	144,200 *				16.0	76.4	126,900 *				17.0	77.7	119,500 *			
15.0	74.4	135,100 *	135,100 *			17.0	75.2	119,700 *				18.0	76.8	113,000 *			
16.0	72.9	127,100 *	127,100 *			18.0	74.0	113,200 *	105,400			19.0	75.8	105,460			
17.0	71.4	119,900 *	119,900 *	105,100		19.0	72.8	105,660	97,100			20.0	74.8	97,130	89,000		
18.0	69.9	113,400 *	113,400 *	100,200		20.0	71.6	97,350	90,500			22.0	72.8	83,790	77,500		
19.0	68.3	105,820	98,900	93,300		22.0	69.2	84,010	78,800	73,500		24.0	70.8	73,560	68,500	63,600	
20.0	66.7	97,500	92,100	86,400		24.0	66.7	73,810	69,700	65,500		26.0	68.7	65,490	61,400	57,900	51,000
22.0	63.6	84,190	80,100	75,700	71,700	26.0	64.2	65,760	62,400	59,000	56,100	28.0	66.6	58,970	55,600	52,700	49,100
24.0	60.3	74,000	70,800	67,300	64,700	28.0	61.6	59,230	56,400	53,700	51,400	30.0	64.5	53,570	50,700	48,200	45,800
26.0	56.9	65,980	63,300	60,500	58,100	30.0	58.9	53,850	51,500	49,200	47,300	32.0	62.4	49,030	46,600	44,500	42,500
28.0	53.4	59,400	57,200	55,000	53,000	32.0	56.2	49,310	47,300	45,500	43,700	34.0	60.2	45,170	43,100	41,000	39,400
30.0	49.7	54,100	52,300	50,400	48,700	34.0	53.3	45,480	43,700	42,200	40,700	36.0	58.0	41,840	40,000	38,400	36,900
32.0	45.7	49,580	48,100	46,500	45,100	36.0	50.4	42,150	40,600	39,300	38,100	38.0	55.7	38,950	37,300	35,800	34,700
34.0	41.5	45,740	44,500	43,200	42,100	38.0	47.3	39,280	37,900	36,800	35,500	40.0	53.3	36,410	35,000	33,900	32,700
36.0	36.9	42,460	41,400	40,300	39,400	40.0	44.1	36,750	35,700	34,800	33,800	45.0	47.0	31,230	30,200	29,300	28,500
												50.0	40.0	27,290	26,400	25,900	25,300
Reeves	10	8	7	5		Reeves	10	7	5	4		Reeves	10	6	4	4	
70' Boom					80' Boom					90' Boom							
		360° Rated Load (lbs)						360° Rated Load (lbs)						360° Rated Load (lbs)			
Load Radius (ft)	Boom Angle (deg.)	0 Degree Machine List	1 Degree Machine List	2 Degree Machine List	3 Degree Machine List	Load Radius (ft)	Boom Angle (deg.)	0 Degree Machine List	1 Degree Machine List	2 Degree Machine List	3 Degree Machine List	Load Radius (ft)	Boom Angle (deg.)	0 Degree Machine List	1 Degree Machine List	2 Degree Machine List	3 Degree Machine List
14.0	82.0	143,600 *				16.0	81.6	126,300 *				17.0	81.9	118,820 *			
15.0	81.2	134,500 *				17.0	80.8	119,100 *				18.0	81.2	112,400 *			
16.0	80.3	126,500 *				18.0	80.1	112,600 *				19.0	80.6	105,220			
17.0	79.5	119,300 *				19.0	79.4	105,290				20.0	79.9	96,870			
18.0	78.7	112,800 *				20.0	78.6	96,930				22.0	78.6	83,480			
19.0	77.8	105,400				22.0	77.2	83,550				24.0	77.3	73,230			
20.0	77.0	97,060				24.0	75.7	73,320				26.0	76.0	65,140			
22.0	75.3	83,700				26.0	74.2	65,230	60,000			28.0	74.7	58,570	53,700		
24.0	73.6	73,470	67,700			28.0	72.7	58,680	54,200			30.0	73.4	53,150	49,000		
26.0	71.9	65,380	60,600			30.0	71.2	53,260	49,500			32.0	72.0	48,580	45,000	41,700	
28.0	70.1	58,840	54,900	51,600		32.0	69.7	48,690	45,500	42,800		34.0	70.7	44,700	41,700	38,900	
30.0	68.4	53,430	50,200	47,300	42,400	34.0	68.1	44,840	42,000	39,700	35,800	36.0	69.3	41,380	38,700	36,300	
32.0	66.6	48,890	46,100	43,700	40,900	36.0	66.6	41,490	39,000	36,900	34,500	38.0	68.0	38,440	36,100	34,200	
34.0	64.8	45,030	42,500	40,500	38,400	38.0	65.0	38,580	36,500	34,600	32,700	40.0	66.6	35,890	34,000	32,100	29,900
36.0	63.0	41,680	39,500	37,700	35,900	40.0	63.4	36,020	34,300	32,600	30,900	45.0	63.0	30,660	29,300	27,700	26,400
38.0	61.1	38,800	36,900	35,000	33,900	45.0	59.3	30,820	29,500	28,200	27,000	50.0	59.4	26,670	25,500	24,300	23,400
40.0	59.2	36,240	34,800	33,300	31,900	50.0	55.0	26,820	25,700	24,700	23,800	55.0	55.6	23,520	22,500	21,600	20,800
45.0	54.3	31,040	29,900	28,800	27,700	55.0	50.5	23,670	22,800	22,000	21,300	60.0	51.6	20,960	20,100	19,400	18,700
50.0	49.0	27,070	26,100	25,300	24,600	60.0	45.6	21,140	20,400	19,900	19,200	65.0	47.4	18,870	18,100	17,600	17,000
55.0	43.3	23,960	23,100	22,500	21,900	65.0	40.3	19,060	18,400	18,000	17,500	70.0	42.9	17,100	16,400	16,000	15,600
60.0	36.9	21,450	20,800	20,300	19,800							75.0	37.9	15,630	15,100	14,800	14,400
Reeves	9	4	4	4		Reeves	8	4	4	4		Reeves	7	4	4	2	

Refer to notes on page 31.

CK850G-2

SPECIFICATIONS

Barge

5 Counterweights (57,590 lbs) - 2 Carbody weights (14,340 lbs) - Crawlers in extended position.

100' Boom					110' Boom					120' Boom							
		360° Rated Load (lbs)					360° Rated Load (lbs)					360° Rated Load (lbs)					
Load Radius (ft)	Boom Angle (deg.)	0 Degree Machine List	1 Degree Machine List	2 Degree Machine List	3 Degree Machine List	Load Radius (ft)	Boom Angle (deg.)	0 Degree Machine List	1 Degree Machine List	2 Degree Machine List	3 Degree Machine List	Load Radius (ft)	Boom Angle (deg.)	0 Degree Machine List	1 Degree Machine List	2 Degree Machine List	3 Degree Machine List
19.0	81.5	101,850 *				20.0	81.8	92,590				22.0	81.5	80,680 *			
20.0	80.9	96,800				22.0	80.7	83,260				24.0	80.5	72,950			
22.0	79.8	83,400				24.0	79.7	73,010				26.0	79.6	64,810			
24.0	78.6	73,120				26.0	78.6	64,900				28.0	78.6	58,240			
26.0	77.4	65,010				28.0	77.5	58,330				30.0	77.6	52,800			
28.0	76.3	58,440				30.0	76.5	52,880				32.0	76.6	48,230			
30.0	75.1	53,020				32.0	75.4	48,320				34.0	75.6	44,330			
32.0	73.9	48,450	44,500			34.0	74.3	44,440	40,600			36.0	74.7	40,980	37,600		
34.0	72.7	44,550	41,100			36.0	73.2	41,090	37,800			38.0	73.7	38,050	35,100		
36.0	71.5	41,200	38,200	35,700		38.0	72.1	38,160	35,300			40.0	72.7	35,470	33,000		
38.0	70.3	38,290	35,600	33,700		40.0	71.0	35,600	33,200			45.0	70.1	30,220	28,300	26,200	
40.0	69.0	35,730	33,500	31,600		45.0	68.2	30,350	28,500			50.0	67.6	26,210	24,600	23,100	
45.0	65.9	30,480	28,900	27,300	25,800	50.0	65.4	26,340	24,900	23,500	22,100	55.0	65.0	23,010	21,600	20,500	19,400
50.0	62.7	26,470	25,100	24,000	22,800	55.0	62.5	23,170	21,900	20,800	19,900	60.0	62.3	20,450	19,300	18,300	17,400
55.0	59.5	23,320	22,200	21,200	20,200	60.0	59.5	20,610	19,600	18,700	17,800	65.0	59.5	18,320	17,400	16,500	15,700
60.0	56.1	20,740	19,800	19,100	18,200	65.0	56.4	18,490	17,700	16,900	16,100	70.0	56.7	16,530	15,700	14,900	14,400
65.0	52.5	18,620	17,800	17,200	16,500	70.0	53.2	16,710	16,000	15,300	14,800	75.0	53.8	15,010	14,300	13,700	13,200
70.0	48.8	16,860	16,200	15,600	15,000	75.0	49.9	15,210	14,500	13,900	13,500	80.0	50.8	13,710	13,000	12,700	12,100
75.0	44.8	15,360	14,800	14,300	13,900	80.0	46.4	13,910	13,300	12,900	12,500	85.0	47.6	12,580	12,000	11,600	11,200
80.0	40.6	14,080	13,600	13,100	12,900	85.0	42.6	12,800	12,300	11,900	11,600	90.0	44.3	11,590	11,100	10,700	10,400
85.0	35.9	12,980	12,600	12,200	12,000	90.0	38.6	11,830	11,400	11,000	10,800	95.0	40.7	10,730	10,300	9,900	9,600
						95.0	34.2	10,970	10,600	10,300	10,100	100.0	36.9	9,960	9,500	9,300	8,900
												105.0	32.7	9,280		8,700	8,500
Reeves	6	4	4	2		Reeves	6	4	2	2		Reeves	5	4	2	2	
130' Boom					140' Boom					150' Boom							
		360° Rated Load (lbs)					360° Rated Load (lbs)					360° Rated Load (lbs)					
Load Radius (ft)	Boom Angle (deg.)	0 Degree Machine List	1 Degree Machine List	2 Degree Machine List	3 Degree Machine List	Load Radius (ft)	Boom Angle (deg.)	0 Degree Machine List	1 Degree Machine List	2 Degree Machine List	3 Degree Machine List	Load Radius (ft)	Boom Angle (deg.)	0 Degree Machine List	1 Degree Machine List	2 Degree Machine List	3 Degree Machine List
24.0	81.3	71,200 *				24.0	81.9	61,720 *				26.0	81.7	52,680 *			
26.0	80.4	64,610				26.0	81.1	60,840				28.0	80.9	51,800 *			
28.0	79.5	58,020				28.0	80.2	57,980				30.0	80.1	51,140 *			
30.0	78.6	52,570				30.0	79.4	52,530				32.0	79.3	47,810			
32.0	77.7	48,010				32.0	78.6	47,950				34.0	78.6	43,890			
34.0	76.8	44,110				34.0	77.7	44,040				36.0	77.8	40,540			
36.0	75.9	40,760				36.0	76.9	40,670				38.0	77.0	37,610			
38.0	74.9	37,830	34,600			38.0	76.0	37,740				40.0	76.2	35,030			
40.0	74.0	35,250	32,500			40.0	75.2	35,160				45.0	74.2	29,760			
45.0	71.7	30,000	27,800			45.0	73.1	29,910				50.0	72.2	25,720	23,700		
50.0	69.4	25,970	24,200	22,600		50.0	70.9	25,880	24,100	22,300		55.0	70.2	22,530	20,900	19,200	
55.0	67.0	22,790	21,300	20,100		55.0	68.7	22,680	21,200	19,700		60.0	68.2	19,950	18,600	17,400	
60.0	64.6	20,210	19,000	17,900	16,800	60.0	66.5	20,100	18,800	17,700	15,700	65.0	66.1	17,810	16,600	15,600	13,700
65.0	62.1	18,070	17,100	16,100	15,400	65.0	64.3	17,960	16,800	15,800	14,900	70.0	64.0	16,000	15,000	14,100	13,100
70.0	59.6	16,290	15,400	14,600	14,000	70.0	62.0	16,150	15,100	14,400	13,600	75.0	61.8	14,480	13,700	12,800	12,100
75.0	57.0	14,770	14,000	13,200	12,800	75.0	59.6	14,630	13,700	13,100	12,400	80.0	59.6	13,160	12,300	11,700	11,100
80.0	54.3	13,470	12,800	12,100	11,700	80.0	57.2	13,310	12,500	12,000	11,400	85.0	57.4	12,010	11,300	10,600	10,200
85.0	51.5	12,320	11,700	11,200	10,700	85.0	54.7	12,160	11,500	11,000	10,600	90.0	55.1	11,000	10,400	9,800	9,400
90.0	48.6	11,330	10,700	10,400	10,000	90.0	52.2	11,170	10,600	10,100	9,700	95.0	52.7	10,110	9,500	9,100	8,600
95.0	45.6	10,440	9,900	9,700	9,200	95.0	49.5	10,290	9,800	9,400	8,900	100.0	50.3	9,320	8,700	8,400	8,000
100.0	42.4	9,670	9,200	8,900	8,600	100.0	46.8	9,500	9,000	8,700	8,300	105.0	47.7	8,640	8,100	7,800	7,600
105.0	39.0	8,990	8,600	8,300	8,000	105.0	43.9	8,790	8,300	8,100	7,700	110.0	45.1	8,000	7,500	7,200	7,000
110.0	35.4	8,390	8,000	7,800	7,500	110.0	40.8	8,170	7,700	7,500	7,200	115.0	42.3	7,420	7,100	6,700	6,500
						115.0	37.6	7,620	7,200	7,000	6,800	120.0	39.4	6,920	6,600	6,300	6,100
						120.0	34.0	7,120	6,700	6,500	6,400	125.0	36.2	6,450	6,100	5,800	5,700
												130.0	32.8	6,040		5,600	5,300
Reeves	5	4	2	2		Reeves	4	2	2	2		Reeves	4	2	2	2	

Refer to notes on page 31.

CK850G-2

SPECIFICATIONS

Barge

5 Counterweights (57,590 lbs) - 2 Carbody weights (14,340 lbs) - Crawlers in extended position.

160' Boom						170' Boom						180' Boom					
360° Rated Load (lbs)						360° Rated Load (lbs)						360° Rated Load (lbs)					
Load Radius (ft)	Boom Angle (deg.)	0 Degree Machine List	1 Degree Machine List	2 Degree Machine List	3 Degree Machine List	Load Radius (ft)	Boom Angle (deg.)	0 Degree Machine List	1 Degree Machine List	2 Degree Machine List	3 Degree Machine List	Load Radius (ft)	Boom Angle (deg.)	0 Degree Machine List	1 Degree Machine List	2 Degree Machine List	3 Degree Machine List
28.0	81.5	44,090 *				28.0	82.0	38,800 *				30.0	81.8	33,730 *			
30.0	80.7	43,430 *				30.0	81.3	38,130 *				32.0	81.1	33,060 *			
32.0	80.0	42,760 *				32.0	80.6	37,470 *				34.0	80.5	32,620 *			
34.0	79.3	42,100 *				34.0	79.9	37,030 *				36.0	79.8	31,960 *			
36.0	78.6	40,520				36.0	79.2	36,370 *				38.0	79.2	31,520 *			
38.0	77.8	37,560				38.0	78.6	35,710 *				40.0	78.5	31,080 *			
40.0	77.1	34,980				40.0	77.9	34,780				45.0	76.9	29,250			
45.0	75.2	29,710				45.0	76.1	29,510				50.0	75.3	25,220			
50.0	73.4	25,680				50.0	74.4	25,460				55.0	73.6	22,000			
55.0	71.5	22,480	20,800			55.0	72.6	22,260	20,500			60.0	72.0	19,400	17,800		
60.0	69.6	19,880	18,400	17,100		60.0	70.8	19,660	18,100	15,700		65.0	70.3	17,260	15,900	13,700	
65.0	67.7	17,720	16,400	15,400		65.0	69.1	17,520	16,100	15,000		70.0	68.6	15,450	14,300	13,100	
70.0	65.7	15,930	14,800	14,000	12,000	70.0	67.2	15,710	14,500	13,700		75.0	66.8	13,910	12,800	11,900	9,300
75.0	63.7	14,390	13,400	12,700	11,600	75.0	65.4	14,170	13,100	12,400	10,400	80.0	65.1	12,560	11,700	10,800	9,000
80.0	61.7	13,070	12,200	11,500	10,900	80.0	63.5	12,850	11,900	11,200	10,200	85.0	63.3	11,410	10,600	10,000	8,800
85.0	59.7	11,920	11,100	10,500	9,900	85.0	61.6	11,680	10,800	10,300	9,600	90.0	61.5	10,400	9,600	9,100	8,500
90.0	57.6	10,910	10,100	9,700	9,200	90.0	59.7	10,670	9,900	9,400	8,900	95.0	59.7	9,500	8,800	8,300	7,800
95.0	55.4	10,000	9,300	8,800	8,500	95.0	57.7	9,780	9,100	8,600	8,200	100.0	57.8	8,700	8,100	7,600	7,200
100.0	53.2	9,210	8,700	8,200	7,900	100.0	55.7	8,990	8,400	7,900	7,600	105.0	55.9	8,000	7,300	7,000	6,600
105.0	50.9	8,500	8,000	7,500	7,200	105.0	53.6	8,260	7,800	7,200	6,900	110.0	54.0	7,340	6,800	6,400	6,100
110.0	48.6	7,870	7,400	7,100	6,700	110.0	51.5	7,620	7,100	6,800	6,400	115.0	52.0	6,760	6,200	5,900	5,600
115.0	46.1	7,290	6,800	6,500	6,300	115.0	49.3	7,050	6,600	6,200	6,000	120.0	49.9	6,230	5,700	5,500	5,100
120.0	43.6	6,760	6,400	6,000	5,800	120.0	47.0	6,520	6,100	5,700	5,600	125.0	47.8	5,700	5,300	4,800	4,600
125.0	40.9	6,280	6,000	5,600	5,400	125.0	44.7	6,040	5,600	5,300	5,100	130.0	45.6	5,220	4,800	4,600	4,200
130.0	38.1	5,860	5,500	5,300	5,000	130.0	42.2	5,570	5,200	4,900	4,700	135.0	43.3	4,780	4,400	4,200	3,900
135.0	35.0	5,440	5,100	5,000	4,600	135.0	39.6	5,150	4,800	4,500	4,300	140.0	40.9	4,380	4,000	3,800	3,600
140.0	31.8	5,070		4,500	4,400	140.0	36.9	4,760	4,400	4,200	3,900	145.0	38.4	4,030	3,600	3,500	3,200
						145.0	34.0	4,380	4,100	3,800	3,700	150.0	35.8	3,680	3,400	3,200	3,000
						150.0	30.8	4,050			3,500	155.0	33.0	3,370	3,100	2,900	2,800
Reeves	4		2	2	2	Reeves		4	2	2	2	Reeves		2	2	2	2
190' Boom						200' Boom											
360° Rated Load (lbs)						360° Rated Load (lbs)						360° Rated Load (lbs)					
Load Radius (ft)	Boom Angle (deg.)	0 Degree Machine List	1 Degree Machine List	2 Degree Machine List	3 Degree Machine List	Load Radius (ft)	Boom Angle (deg.)	0 Degree Machine List	1 Degree Machine List	2 Degree Machine List	3 Degree Machine List	Load Radius (ft)	Boom Angle (deg.)	0 Degree Machine List	1 Degree Machine List	2 Degree Machine List	3 Degree Machine List
32.0	81.6	29,540 *				34.0	81.4	25,790 *									
34.0	81.0	28,880 *				36.0	80.9	25,350 *									
36.0	80.4	28,430 *				38.0	80.3	24,910 *									
38.0	79.8	27,990 *				40.0	79.7	24,470 *									
40.0	79.2	27,550 *				45.0	78.2	23,360 *									
45.0	77.6	26,450 *				50.0	76.8	22,480 *									
50.0	76.1	25,300				55.0	75.3	21,380 *									
55.0	74.5	22,110				60.0	73.8	19,310									
60.0	72.9	19,510	16,800			65.0	72.3	17,150	14,100								
65.0	71.3	17,350	15,600			70.0	70.8	15,320	13,200	10,200							
70.0	69.7	15,540	14,200	11,700		75.0	69.3	13,770	12,400	9,600							
75.0	68.1	13,990	12,800	11,100	8,100	80.0	67.7	12,430	11,300	9,100	6,800						
80.0	66.5	12,650	11,600	10,600	7,900	85.0	66.2	11,260	10,400	8,600	6,600						
85.0	64.8	11,500	10,700	9,900	7,700	90.0	64.6	10,250	9,400	8,100	6,200						
90.0	63.2	10,470	9,600	9,000	7,300	95.0	63.0	9,340	8,600	7,600	5,900						
95.0	61.4	9,560	8,800	8,200	6,900	100.0	61.4	8,530	7,900	7,100	5,500						
100.0	59.7	8,770	8,200	7,600	6,600	105.0	59.7	7,820	7,300	6,600	5,100						
105.0	57.9	8,040	7,500	7,000	6,300	110.0	58.1	7,160	6,600	6,000	4,900						
110.0	56.1	7,400	6,900	6,500	5,800	115.0	56.3	6,560	6,000	5,600	4,500						
115.0	54.3	6,810	6,300	5,900	5,400	120.0	54.6	5,970	5,400	5,000	4,200						
120.0	52.4	6,280	5,800	5,400	5,000	125.0	52.8	5,440	5,000	4,500	3,800						
125.0	50.5	5,750	5,200	5,000	4,600	130.0	51.0	4,960	4,600	4,100	3,600						
130.0	48.5	5,260	4,800	4,600	4,200	135.0	49.1	4,510	4,100	3,700	3,200						
135.0	46.4	4,800	4,400	4,200	3,800	140.0	47.2	4,100	3,700	3,400	2,900						
140.0	44.3	4,400	3,900	3,700	3,500	145.0	45.2	3,700	3,300	3,000	2,600						
145.0	42.1	4,010	3,600	3,500	3,200	150.0	43.1	3,350	2,900	2,800							
150.0	39.8	3,680	3,300	3,100	2,900	155.0	41.0	3,040	2,700								
155.0	37.4	3,350	3,000	2,900	2,600												
160.0	34.8	3,040	2,700	2,600													
165.0	32.0	2,770	2,500														
Reeves	2		2	2	2	Reeves		2	2	2	2						

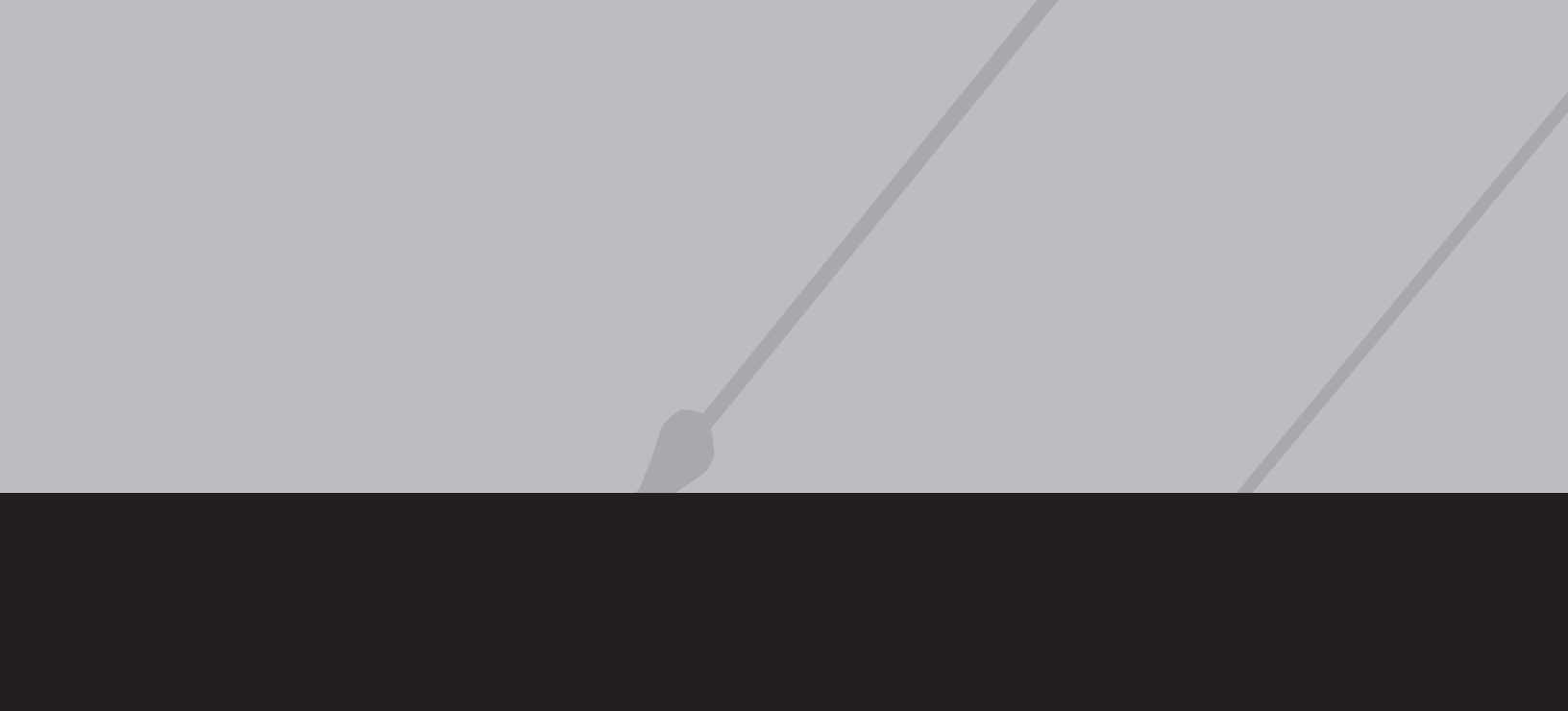
Refer to notes on page 31.

NOTES

[illegible]

NOTES

This image shows a single sheet of white paper with horizontal ruling lines. The lines are evenly spaced and run across the width of the page. There are no margins, text, or other markings on the paper.



Note: This catalog may contain photographs of machines with specifications, attachments and optional equipment not certified for operation in your country. Please consult KOBELCO for those items you may require. Due to our policy of continual product improvements all designs and specifications are subject to change without advance notice.

Copyright by KOBELCO CONSTRUCTION MACHINERY CO., LTD. No part of this catalog may be reproduced in any manner without notice.

KOBELCO CONSTRUCTION MACHINERY CO., LTD.

Inquiries To:

17-1, Higashigotanda 2-chome, Shinagawa-ku, Tokyo 141-8626 JAPAN

Tel: +81-3-5789-2130 Fax: +81-3-5789-3372

URL: <http://www.kobelcocm-global.com/>

KOBELCO CONSTRUCTION MACHINERY U.S.A. INC.

22370 Merchants Way, Katy, Texas 77449, USA

Tel: +1-713-888-8430

URL: <http://www.kcmu-cranes.com/>