

Hydraulic Crawler Crane

CK1200G-2

Max. Lifting Capacity : 120 US Tons

Max. Crane Boom Length : 230 ft

Max. Fixed Jib Combination : 200 ft + 70 ft



CK1200G-2

CONTENTS

2 SPECIFICATIONS

6 G-MODE

7 LMI

8 WINCH PERFORMANCE

9 GENERAL DIMENSIONS

10 DIMENSIONS & WEIGHT

13 TRANSPORTATION PLAN

15 SELF ASSEMBLY PROCEDURE

16 COUNTERWEIGHT SELF-REMOVAL DEVICE

17 BOOM & JIB ARRANGEMENTS

18 WORKING RANGES

21 SUPPLEMENTAL DATA

22 LIFTING CAPACITY

35 CLAMSHELL DATA

38 BARGE DATA

General Description



Type	Crawler mounted, Lattice boom, Hydraulic controlled
Maximum lift capacity	240,000 lbs (108,900 kg) @ 12' operating radius (50' boom)
Basic boom length	50' (15.2 m)
Maximum boom length	230' (70.1 m)
Basic boom & jib length	70' + 30' (24.4 m + 9.1 m)
Maximum boom & jib length	200' + 70' (61 m + 21.3 m)
Working weight	Approx. 220,330 lbs (99,942 kg)
Ground bearing pressure	Approx. 13.6 psi (93.9 kPa)
Gradeability	40%

Calculations to determine working weight, ground bearing pressure, and gradeability include the weight of the upper and lower works of the crane, counterweights, and carbody weights, 40' boom and hook block.

General Dimensions

Height to top of gantry (lowered)	11'6" (3.5 m)
Width of upper machine w/operator's cab	9'10" (2.99 m)*
Radius of rear end (counterweights)	14'6" (4.43 m)
Counterweight ground clearance	4'2" (1.27 m)
Center of rotation to boom foot pin	3'7" (1.10 m)
Height from ground to boom foot pin	7'3" (2.2 m)
Height over gantry (raised)	24'2" (7.38 m)
Overall length of crawlers	22'3" (6.77 m)
Overall width of crawlers	17'5" (5.3 m)
Center to center, idler to sprocket	19' (5.8 m)
Shoe width	36" (0.91 m)
Ground clearance of body	18" (0.45 m)

Working Speed

Hoist line speed (front and rear drums)	390 ~ 10 ft/min (120 ~ 3 m/min)
Lowering line speed (front and rear drums)	390 ~ 10 ft/min (120 ~ 3 m/min)
Boom hoist line speed (front and rear drums)	230 ~ 6.6 ft/min (70 ~ 2 m/min)
Boom lowering line speed (front and rear drums)	230 ~ 6.6 ft/min (70 ~ 2 m/min)
Swing speed (max.)	3.2 rpm
Travel speed (high/low)	0.87/0.62 mph (1.4/1.0 km/h)

Line speed based on single line, no load, and first layer of rope on the drum.

Upper Machinery

Power Plant:

Diesel engine - make and model	Hino J08E-UV (Tier 4 Compliant)
No. of cylinders	6
Bore X stroke	4-13/16" x 5-7/8" (122 mm x 150 mm)
Cycles	4
Total displacement	469 cu.in. (7.684 ℓ)
Rated output SAE GROSS	285 HP / 2,100 rpm (213 kW / 2,100 min ⁻¹)
Maximum torque	750 lbs-ft / 1,600 rpm (1,017 Nm / 1,600 min ⁻¹)
Starter	24 Volts / 5.0 kW
Alternator	24 Volts / 90 Amp
Batteries	Two 12 volt, 136 AH/5 HR capacity series connected.
Radiator	Corrugated type core, thermostatically controlled, with cleanout screen.
Throttle	Twist grip type hand throttle, electrically controlled, in conjunction with floor mounted pedal.
Air cleaner	Dry type with replaceable paper element.
Fuel tank capacity	105 US gal. (400 liters)
Lube oil filters	Full flow and by-pass type with element type.
Fuel filter	Replaceable paper element.



* - 10'5" wide with Catwalks on cab side only.
11' wide with Catwalks on both sides.



Self Lifting Device - Standard Equipment

Counterweight and Carbody weight

Counterweight Base	1 x 25,600 (11,600 kg)
Counterweight (R)	2 x 12,680 (5,750 kg)
Counterweight (L)	2 x 12,680 (5,750 kg)
Total Counterweight	76,320 (34,600 kg)

Carbody weight	2 x 7,320 (3,320 kg)
Total Carbody weight	14,640 (6,640 kg)



Hydraulic system

Maximum pressure rating
4,626 psi (31.9MPa)

Cooling
Oil to air heat exchanger

Filtration
Full flow filters with replaceable paper elements

Reservoir capacity
121.5 US gal. (460 liters)

Hydraulic pumps:

Load hoist, boom hoist, and propel

2 piston pumps, max flow rate
67.3 US gal/min x 2 (255 ℓ/min x 2)

Swing

1 piston pump, max flow rate
46.7 US gal/min (177 ℓ/min)

Control system and auxiliary

2 Gear pumps, max flow rate
16.3 US gal/min + 10.6 US gal (61.6 ℓ/min + 40.5 ℓ/min)

Brake cooling system

2 gear pumps, max flow rate
19.4 US gal/min x 2 (73.5 ℓ/min x 2)

Gantry

This high folding type gantry is fitted with a sheave frame for boom reeving. Hydraulic lift is standard. It provides full up, full down positions with linkage.

Operators cab

Totally enclosed from weather, this full-vision cab has safety glass all around. The adjustable, high-backed seat with armrest is capable of adjustment with or without the control console. Auxiliary controls and instruments are on a side mounted console. A signal horn, windshield wipers, air conditioner/heater, and swing limiter are all standard features.

Controls

At the operator's right are console-mounted adjustable short levers for the front and rear drum and the boom hoist control. Fine inching control and free fall activation switches are built in to the levers. Beside the seat on the right are two short levers for propel control, plus individual speed dial controls for front, rear, and boom drums. At the left is the console mounted swing lever, an optional 3rd drum control, switches for the front, rear, and boom drum pawls, and the engine start/stop key. A swing brake control switch and signal horn button are on the swing lever.

Swing:

Swing unit

Hydraulic motor driving spur gears through planetary reducers to output swing pinion for 360 degree rotation.

Swing brake

Spring set hydraulically released multiple disk brake mounted on swing motor.

Swing circle

Single row ball bearing with an integral internally cut swing gear.

Swing lock

Manual, 4 position lock for transportation.



Line pull:

Max. line pull (single line) - 46,800 lbf (208 kN)

Rated line pull - 25,000 lbf (108 kN)

Lower Machinery

Crawlers:

Crawler assemblies can be hydraulically extended or retracted for wide track operation or retracted for transportation.

Crawler belt tension adjusted with hydraulic jack and maintained by shims between the idler block and frame.

Crawler drive:

The independent two speed hydraulic propel drive is built into each crawler side frame. Each drive consists of a hydraulic motor driving a propel sprocket through a planetary gear box. The hydraulic motor and gear box are built into the crawler side frame within the shoe width.

Crawler brakes:

Spring set, hydraulically released, multiple disk-type parking brakes are built into each propel drive.

Steering mechanism:

A hydraulic propel system provides both skid steering and counter rotating steering.

Crawler shoe:

66 shoes - 36" wide, each crawler.

Track rollers:

The track rollers are sealed for maintenance free operation.

Front drum:

Front and rear drums for load hoist powered by hydraulic variable plunger motors, driven through planetary reducers.

Negative brake

A spring-set, hydraulically released multiple disk brake is mounted on the hoist motor and operated through a counter-balance valve.

Drum lock External ratchet for locking drum

Drums:

Front drum -

614 mm P.C.D. x 617 mm Lg., grooved for 26 mm wire rope. Rope capacity is 853' (260 m) working length and 1,181' (361 m) storage length.

Rear drum -

614 mm P.C.D. x 617 mm Lg., grooved for 26 mm wire rope. Rope capacity is 755' (230 m) working length and 1,181' (361 m) storage length.

3rd drum (optional) -

550 mm P.C.D. x 545 mm Lg., grooved for 26 mm wire rope. Rope capacity is 623' (190 m) working length and 1,099' (335 m) storage length.



Crane Attachments

Boom:

The welded lattice construction uses tubular, high-tension steel chords with pin connections between sections.

<i>Maximum boom length</i>	230' (70.1 m)
<i>Basic boom length</i>	50' (15.2 m)
<i>Boom base section</i>	25'7" (7.79 m)
<i>Boom tip section</i>	27'4" (8.32 m)

Boom insert (optional):

Optional boom inserts are available to provide extension capabilities. They are robotic welded, laser aligned, lattice constructed with tubular, high-tension steel chords and pin connections.

<i>Boom insert</i>	10' (3.1 m), 20' (6.1 m), 40' (12.2 m)
--------------------	--

Jib (optional):

Jib inserts are available to provide extension capabilities. The optional jib employs welded lattice construction with tubular, high-tension steel chords with pin connections between sections.

<i>Maximum jib length</i>	70' (21.3 m)
<i>Basic jib length</i>	30' (9.1 m)
<i>Jib base section</i>	15'9" (4.8 m)
<i>Jib tip section</i>	16'5" (5.0 m)
<i>Jib insert</i>	10' (3.1 m), 20' (6.1 m)

Jib is useable on booms of 90' (27.4 m) through 200' (61.0 m)



Auxiliary sheave (optional):

Auxiliary sheave is extendible on booms of 50' (15.2 m) through 220' (67.1 m)

Boom hoist reeving:

Twelve (12) parts of 25/32" (20.0 mm) diameter high strength wire rope.

Boom backstops:

Telescopic type with spring bumper

Standard Equipment

Lights:

- Two (2) front flood lights
- One (1) cab inside light

Gauges and warning display

Gauges

- One (1) tachometer
- One (1) hour meter
- One (1) fuel gauge
- One (1) water temperature

Warning display

- Battery charge
- Engine oil pressure
- Air cleaner
- Engine oil filter
- Control main pressure
- Hydraulic oil temperature
- DPF condition indicator

Others

- Air conditioner/heater
- Drum turn indicator (front/rear)
- Foot pedal / throttle
- Electric transfer pump
- Counterweight self-removal device
- KCross Telematics
- Free fall winches

Safety Service

- Function lock lever
- Swing Limiter
- Boom over hoist limit switch
- Signal horn
- Front/rear hoist drum lock
- Swing Limiter (Buzzer, lamps, or stops)
- Overload prevention device (LMI)
- Hook over hoist shut off (Anti-two-block)
- Boom angle indicator
- Travel alarm

Safety Service (cont)

- Level indicator
- Boom hoist drum lock
- Swing locks, anti drift, and mechanical
- Boom backstops
- Boom base catwalk
- Upper machinery catwalk, handrails and ladder

Tools and Accessories

A set of tools and accessories are furnished.

Optional Equipment

- Third drum
- Hook block
- Hook ball
- Auxiliary sheave
- Fixed jib
- Boom inserts
- Carbody erection cylinder

G-Mode

The G-modes are a standard exclusive energy and fuel saving system, with up to 30% in fuel savings. The G-Mode eliminates needless operations and engine functions allowing for reduced fuel consumption by using three basic modes that are all operator selectable.

Auto Idling Stop Mode (AIS):

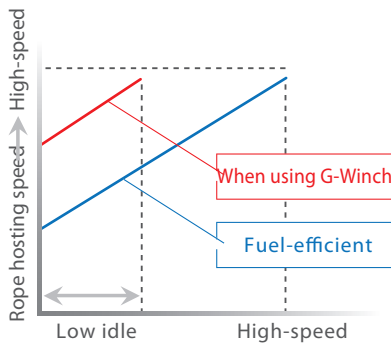
An Industry First

The AIS mode can conserve fuel by stopping the engine, with an operator prompt, after 10 seconds of idling time. Restarting the engine is simple by just twisting the throttle.

G-Winch Mode:

An Industry First

The G-winch mode can produce maximum winch line speed at a low engine RPM.



The high speed mode allows the line to be raised or lowered at maximum line speed without raising engine speed when lifting without a load.

G-Engine Mode:

An Industry First

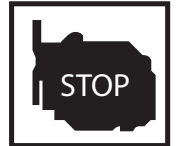
The G-engine mode limits maximum engine speed to 1,750 RPM and controls the pumps to make engine operation in the most efficient condition.



G-Engine



G-Winch



AIS



Exhaust cleaning DPR:

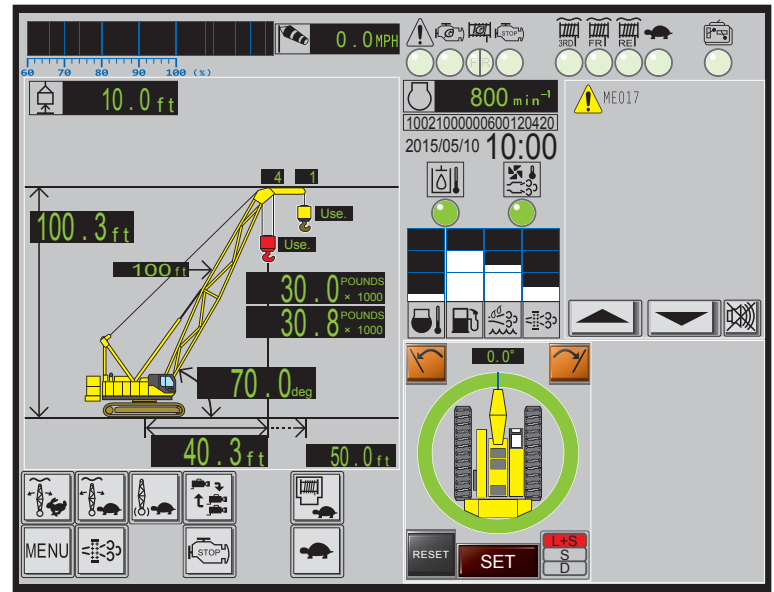
The DPR (diesel particulate active reduction system) burns PM (particulate matter) collected by the DPF (diesel particulate filter) from the diesel exhaust gas, increasing the PM collection efficiency of the DPF, and recovering to purify the exhaust. This means that the exhaust gas from the diesel engine is cleaner, conforming with current EPA Interim Tier 4 regulations.

A new clean diesel system - although diesel engines consume less fuel and emit less CO₂ than gasoline engines, they also emit more harmful particulate matter and nitrogen oxide (NO_x). The "new clean energy system" engine utilizes a DPF to reduce particulate matter, which is also kept to a minimum using negative ions. This system requires the use of low sulfur diesel.

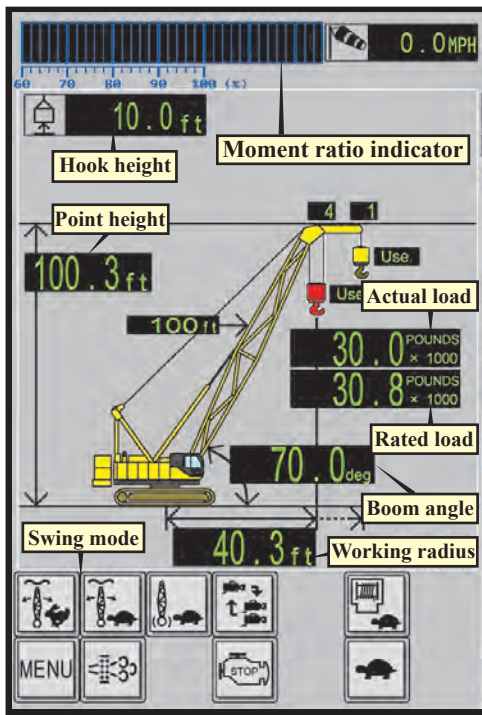
* Warning: High sulfur diesel will damage the engine.

Load Moment Indicator (LMI)

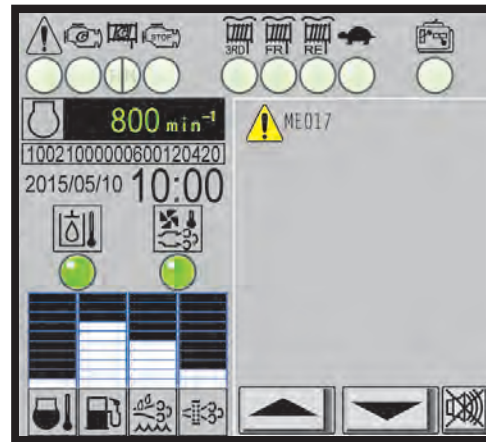
The Kobelco designed 12" touch panel screen with sunshade and screen protector is an industry first. This intuitive and easy to understand new touch screen monitor gives the operator a full display of essential data. Universal pictograms are used providing easy visual recognition, making this new technology easy to read and understand the information. This new monitor includes: Hook Height, Engine Speed, Display Lamp of standard functions, Gauges, Over-Swing Prevention Device, Maximum Load Radius, Switches, and Error Messages. Load charts include standard, jib, reduced counterweight, barge, and clamshell.



Moment Limiter (Left Side)



Gauges (Right Side)



Display Lamp

G-Engine	Engine warning lamp
G-Winch	Remote control connection
AIS operation	Free fall (main/auxiliary)
Inching Mode	Free fall (3rd)

Error Message

Touch to display details in a pop-up window.

Gauges

DEF gauge	Hydraulic oil temp lamp
Fuel gauge	Exhaust system cooling lamp
Diesel particulate filter gauge	
Coolant temperature	

* Figures for the above gauges are only shown when the bar is touched.

Main Menu



Crane Config.

Angle/Radius Limiter

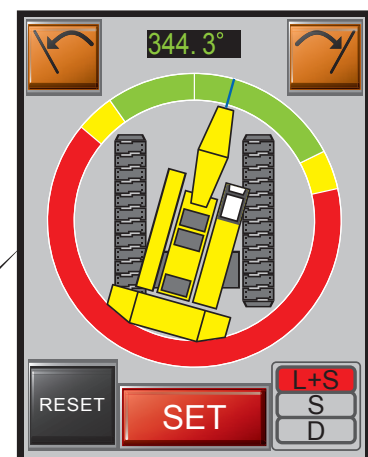
Self Check Mode

Adjustment Mode

Service Mode

Over-Swing Prevention

An over-swing preventative device is standard. It limits the swing of the crane. Configuration is simple and can be done from the touch panel.



Winch Performance Data

Note:

Line speed and line pull based on Hino PJ08E-UV at 2,100 rpm.

Line speed and line pull based on single line. Max. line pull is not based on wire rope strength.

Front & Rear Drum

Wire Rope Diameter = 26 mm

Rated Line Pull = 25,000 lbs (11,340 kg)

Maximum Line Pull = 46,800 lbs (21,228 kg)

Total Storage Capacity = 1,181 ft (335 m)

		Line speed (ft/min)					
Layer		1	2	3	4	5	6
Line Pull (lbs)	0	393	421	449	476	504	storage only
	5,000	393	421	449	476	504	
	10,000	387	414	440	467	494	
	15,000	353	353	358	339	339	
	20,000	265	265	254	254	254	
	25,000	212	212	202	191	177	
	30,000	166	149	140	138	136	
	35,000	120	118	114	109		
	40,000	100	95				
Storage Capacity (ft)		145	155	165	176	186	196

Third Drum (for Load hoist)

Wire Rope Diameter = 26 mm

Rated Line Pull = 25,000 lbs (11,340 kg)

Maximum Line Pull = 46,800 lbs (21,228 kg)

Total Storage Capacity = 1,099 ft (334.9 m)

		Line speed (ft/min)					
Layer		1	2	3	4	5	6
Line Pull (lbs)	0	393	421	449	476	504	storage only
	5,000	393	421	449	476	504	
	10,000	387	414	440	467	494	
	15,000	360	360	348	348	348	
	20,000	270	270	261	261	261	
	25,200	214	214	199	187	173	
	30,000	166	149	140	138	136	
	35,000	120	118	114	109		
	40,000	100	95				
Storage Capacity (ft)		145	155	165	176	186	196

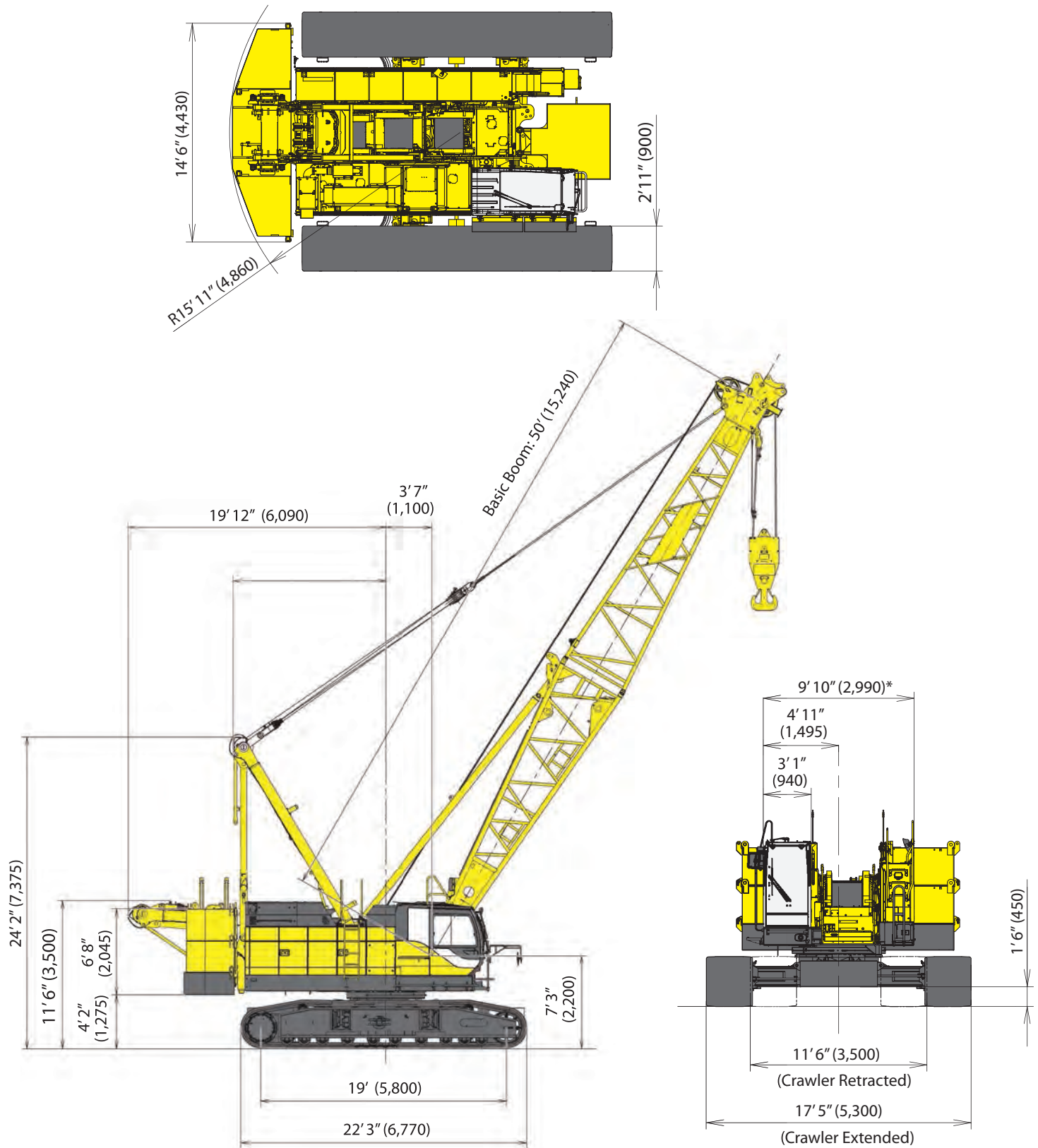
Wire Rope Specifications

Use	Construction	No load diameter	Length	Safety Factor	Required minimum breaking strength
Front drum	6 x 29 Filler IWRC Right hand lay, Regular lay	1.050" to 1.069" (26.65 mm to 27.17 mm)	853' (260 m)	3.5: 1	120,048 lbs (21,228 kg)
Rear drum	6 x 29 Filler IWRC Right hand lay, Regular lay	1.050" to 1.069" (26.65 mm to 27.17 mm)	755' (230 m)	3.5: 1	120,048 lbs (21,228 kg)
Boom drum	6 x 31 Warrington seal Right hand lay, Regular lay	0.639" to 0.653" (16.24 mm to 16.58 mm)	509' (155 m)	3.5: 1	73,737 lbs (33,447 kg)
Third drum (Optional)	6 x 29 Filler IWRC Right hand lay, Regular lay	1.050" to 1.069" (26.65 mm to 27.17 mm)	623' (190 m)	3.5: 1	120,048 lbs (21,228 kg)

CK1200G-2

SPECIFICATIONS

General Dimensions



* - 10' 5" wide with Catwalks on cab side only.
11' wide with Catwalks on both sides.

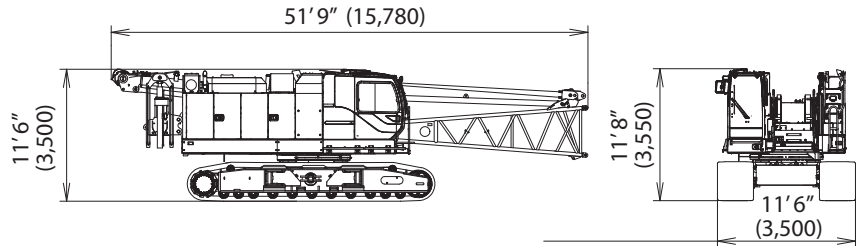
Dimensions and Weight

Dimensions: ft-in (mm) Weight: lbs (kg)

Base Machine - 1

Weight: 128,808 lbs (57,520 kg)

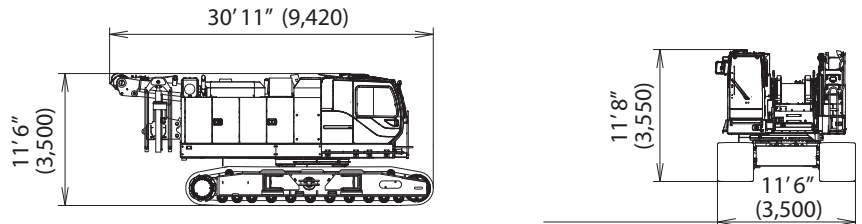
Boom base, gantry, crawlers, self removal unit, and wire ropes (front and boom hoist)



Base Machine - 2

Weight: 119,489 lbs (54,200 kg)

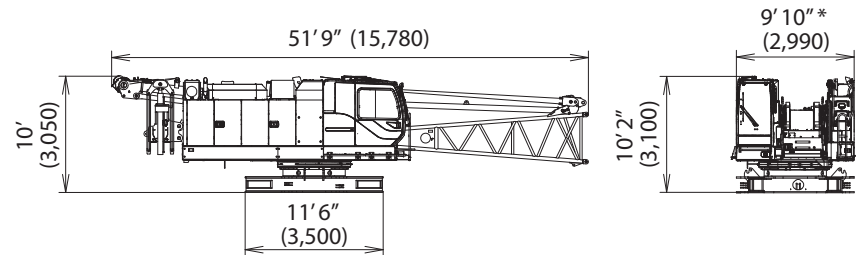
Gantry, crawlers, self removal unit, and wire ropes (front, rear, and boom hoist)



Base Machine - 3

Weight: 74,206 lbs (33,660 kg)

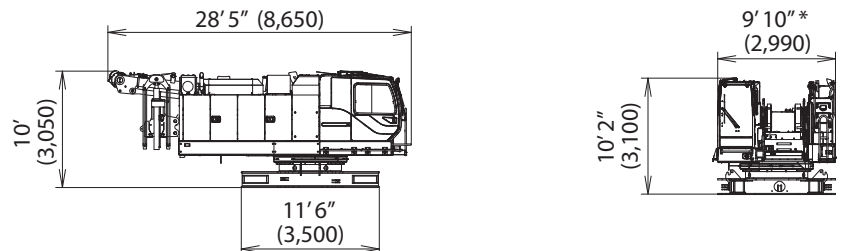
Boom base, gantry, self removal unit, and wire ropes (front, rear, and boom hoist)



Base Machine - 4

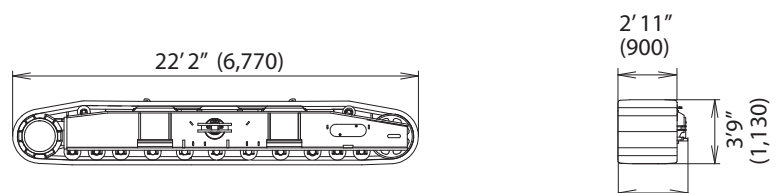
Weight: 66,887 lbs (30,340 kg)

Gantry, self removal unit, and wire ropes (front, rear, and boom hoist)



Crawler

Weight: 26,301 lbs (11,930 kg)



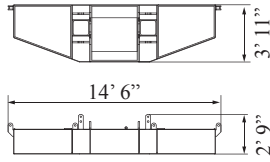
* - 10' 5" wide with Catwalks on cab side only.
11' wide with Catwalks on both sides.

Dimensions and Weight

Dimensions: ft-in (mm) Weight: lbs (kg)

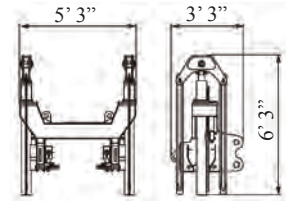
Counterweight Base

Weight: 25,600 lbs (11,600 kg)



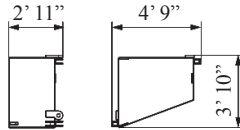
Self Removal Unit

Weight: 1,918 lbs (870 kg)



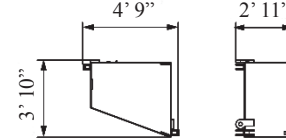
Counterweight (R)

Weight: 12,680 lbs (5,750 kg)



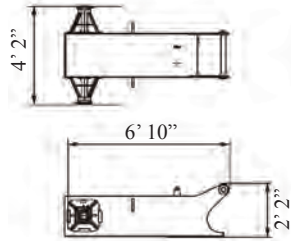
Counterweight (L)

Weight: 12,680 lbs (5,750 kg)



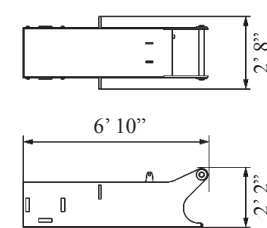
Carbody Weight

Weight: 7,319 lbs (3,320 kg)
(With float)



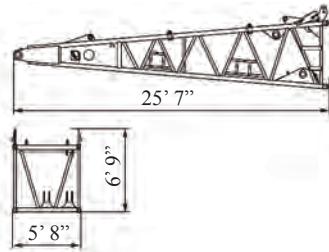
Carbody Weight

Weight: 7,165 lbs (3,250 kg)
(Without float)



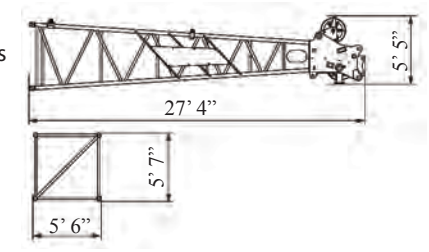
Boom Base

Weight: 4,927 lbs (2,235 kg)



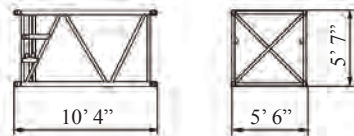
Boom Tip

Weight: 3,360 lbs (1,525 kg)
Includes cable roller and guy lines



10 ft (3.0 m) Insert Boom

Weight: 840 lbs (380 kg)
Includes cable roller and guy lines



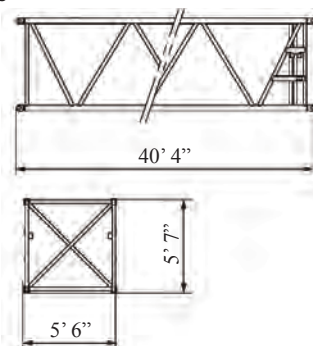
20 ft (6.1 m) Insert Boom

Weight: 1,445 lbs (655 kg)
Includes cable roller and guy lines



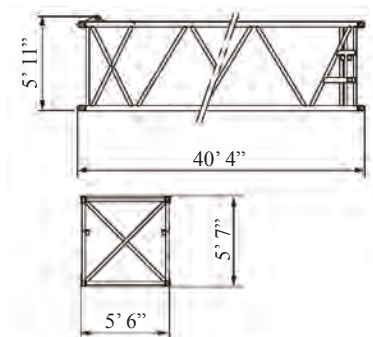
40 ft (12.2 m) Insert Boom

Weight: 2,635 lbs (1,195 kg)
Includes cable roller and guy lines



40 ft (12.2 m) Insert Boom (with lug)

Weight: 2,690 lbs (1,220 kg)
Includes cable roller and guy lines



CK1200G-2

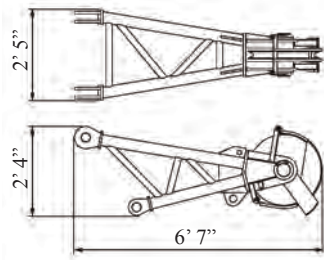
SPECIFICATIONS

Dimensions and Weight

Dimensions: ft-in (mm) Weight: lbs (kg)

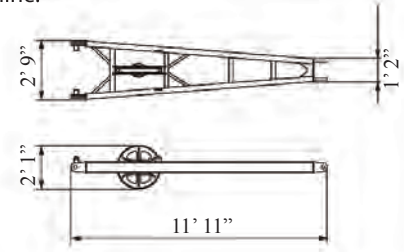
Auxiliary Sheave

Weight: 660 lbs (300 kg)



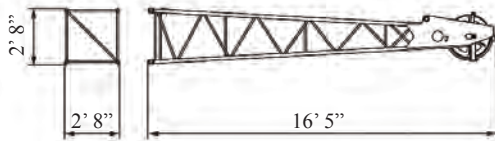
Jib Strut

Weight: 550 lbs (250 kg)
Includes guy line.



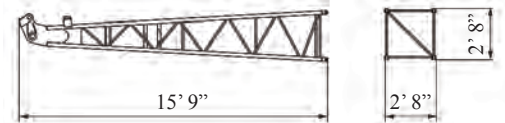
Jib Tip

Weight: 620 lbs (280 kg)
Includes cable roller.



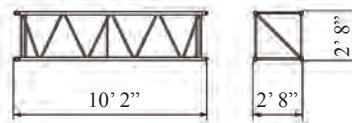
Jib Base

Weight: 440 lbs (200 kg)
Includes guy line.



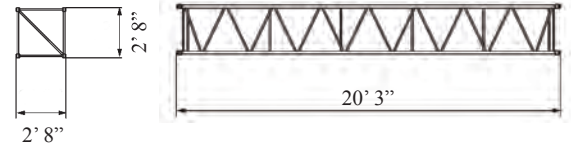
10 ft (3.0 m) Jib Insert

Weight: 220 lbs (100 kg)
Includes cable roller and guy line.



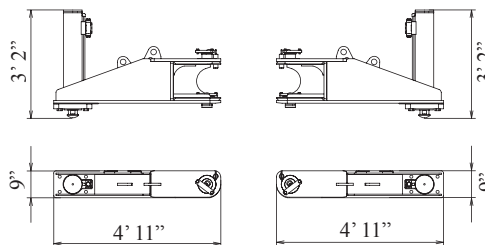
20 ft (6.1 m) Jib Insert

Weight: 400 lbs (180 kg)
Includes cable roller and guy line.



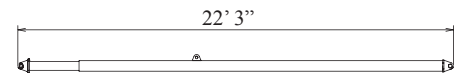
Translifter

Weight: 820 lbs (370 kg)



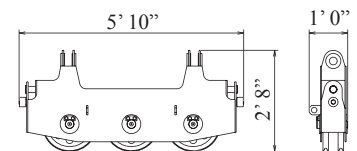
Boom Backstop

Weight: 970 lbs (440 kg)



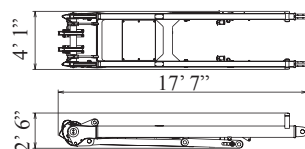
Upper Spreader

Weight: 660 lbs (300 kg)



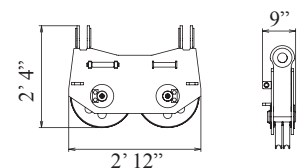
Gantry

Weight: 2,910 lbs (1,320 kg)



Lower Spreader

Weight: 440 lbs (200 kg)



Transportation Plan

Refer to pages 10-12

Shipping plan for 160 ft Boom

Description of Item	Weight		Trailer Loads					
	lbs	(kg)	#1	#2	#3	#4	#5	#6
Base Machine with Boom Base*	75,565	(34,730)	1					
Crawler	26,530	(12,035)		1	1			
Counterweight Base	25,600	(11,600)					1	
Counterweight (L)	12,680	(5,750)				1		1
Counterweight ('R)	12,680	(5,750)						2
Carbody Weight	7,320	(3,320)				2		
10 ft Insert Boom	850	(385)		1				
20 ft Insert Boom	1,445	(655)		1				
40 ft Insert Boom	2,635	(1,195)						1
40 ft Insert Boom (w/ Lug)	2,690	(1,220)				1		
Boom Tip	3,385	(1,535)					1	
75 Ton Block	3,000	(1,361)				1		
13 Ton Ball	800	(365)			1			
Ladder Assembly	100	(41)			1			
Support Box	5,000	(2,268)		1				
Auxiliary Sheave	660	(330)		1				
Approx. Total Shipping Weight		lbs (kg)	75,565 (34,730)	34,485 (15,673)	27,430 (12,441)	33,010 (14,971)	28,985 (13,135)	40,675 (18,445)

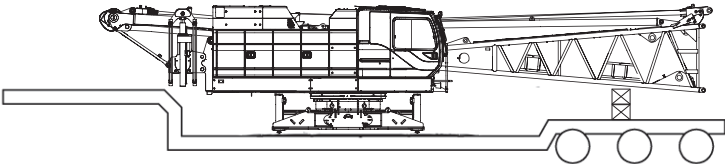
* Third drum is not included. Add 6,100 lbs if third drum is installed.

Loads for transportation were targeted at 45,000 lbs, 8' 6" wide, 48' long and 13' 6" high from ground, 48' step deck.

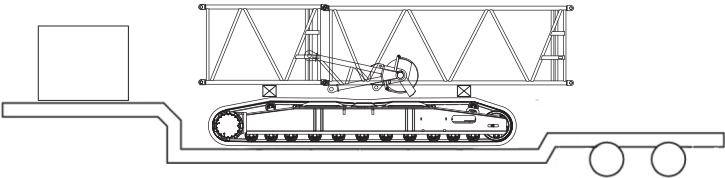
This may vary depending on truck/trailer weight, style of trailer and state law.

* Double drop trailer required.

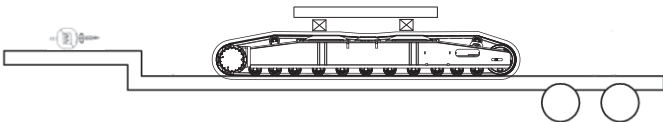
Trailer #1



Trailer #2 *



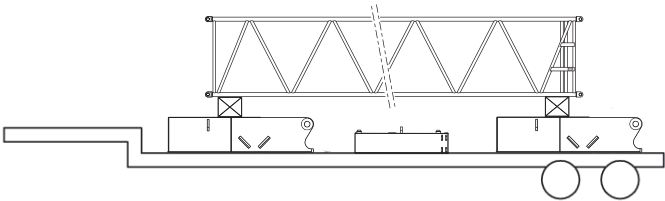
Trailer #3



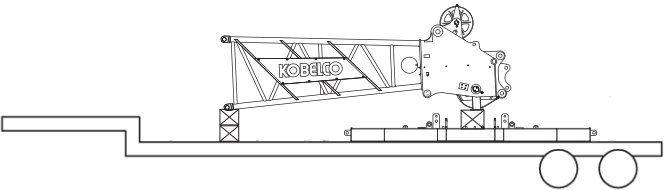
Transportation Plan

Refer to pages 10-12

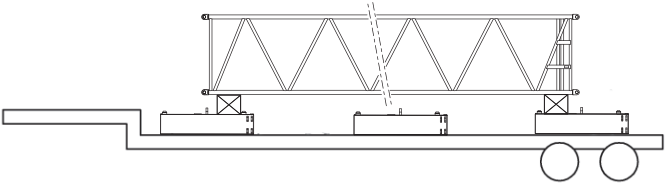
Trailer #4



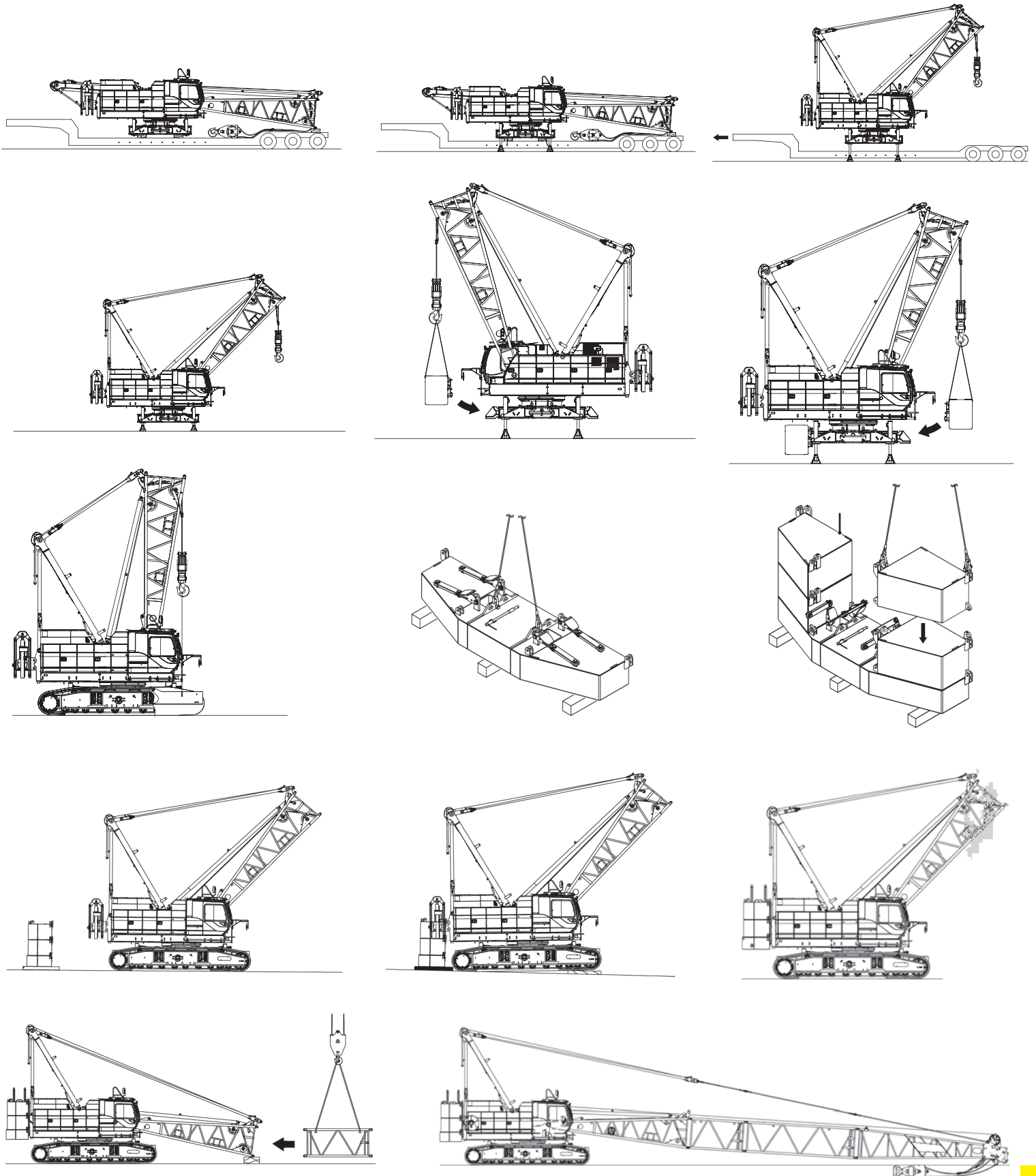
Trailer #5



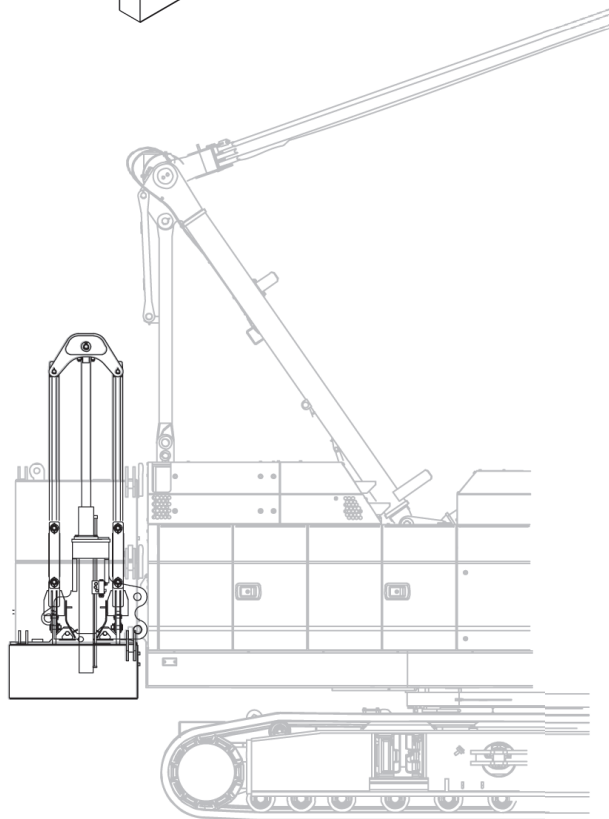
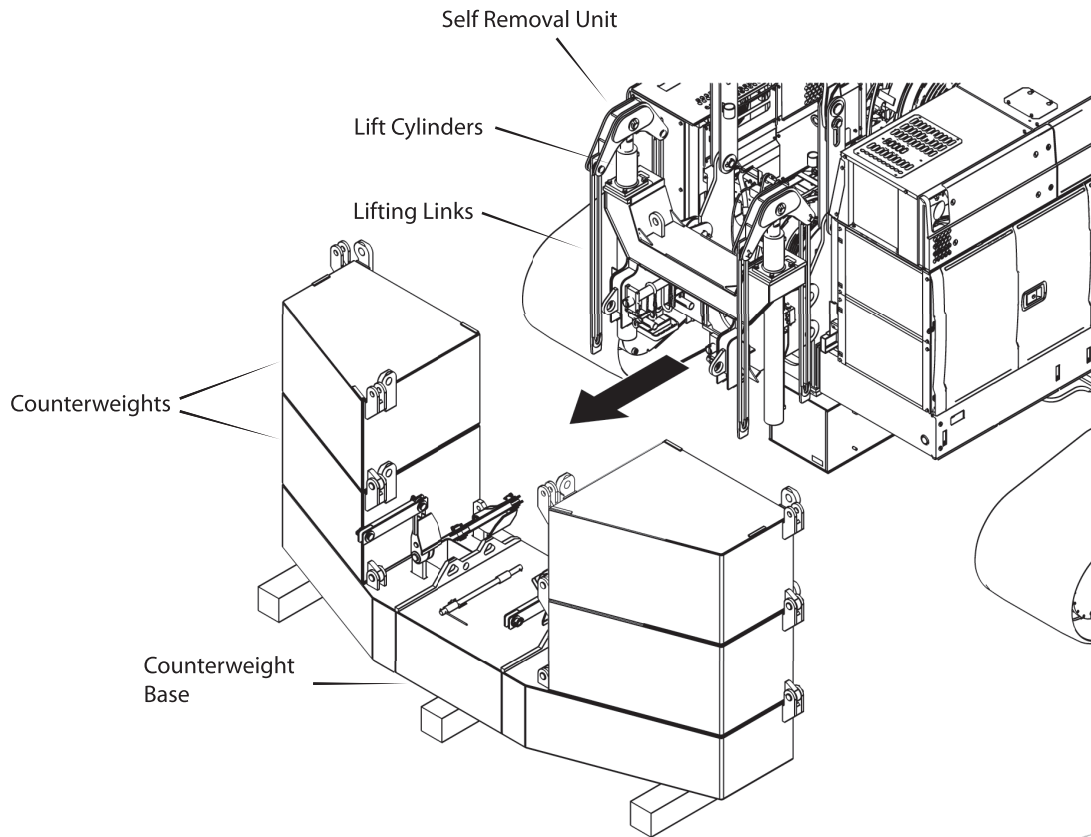
Trailer #6



Self-Assembly Procedure



Counterweight Self-Removal Device



Boom and Fixed Jib Arrangement

Boom Arrangement

Boom length ft (m)	Boom arrangement
40 (12.2)	
50 (15.2)	
60 (18.3)	※
70 (21.3)	※
80 (24.4)	※
90 (27.4)	※
100 (30.5)	※
110 (33.5)	※
120 (36.6)	※
130 (39.6)	※
140 (42.7)	※

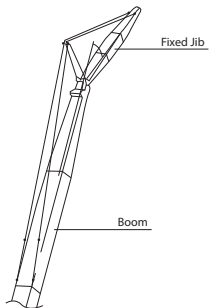
Boom length ft (m)	Boom arrangement
150 (45.7)	※
160 (48.8)	※
170 (51.8)	※
180 (54.9)	※
190 (57.9)	※
200 (61.0)	※

Symbol	Boom Length	Remarks
	20.0 ft (6.1 m)	Boom Base
	20.0 ft (6.1 m)	Boom Top
	10.0 ft (3.1 m)	Insert Boom
	20.0 ft (6.1 m)	Insert Boom
	40.0 ft (12.2 m)	Insert Boom
	40.0 ft (12.2 m)	Insert Boom with lug

↗ mark shows the guy line installing position when the fixed jib is used.

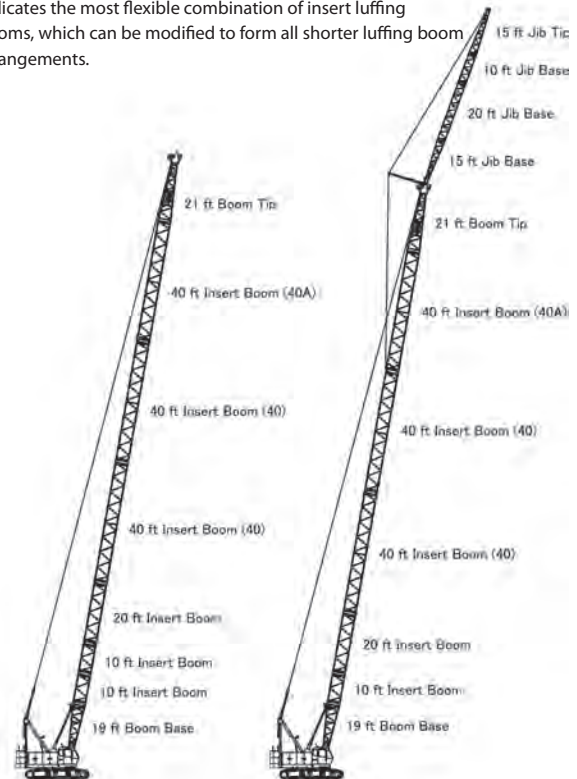
※ indicates the most flexible combination of insert luffing booms, which can be modified to form all shorter luffing boom arrangements.

Fixed Jib Arrangement



Crane boom length	Jib length ft (m)	Jib arrangement
80 ft (24.4 m) 190 ft (57.9 m)	30 (9.1)	
	40 (12.2)	
	50 (15.2)	
	60 (18.3)	

Symbol	Jib Length	Remarks
	15 ft (4.6 m)	Jib Base
	15 ft (4.6 m)	Jib Top
	10 ft (3.0 m)	Insert Jib
	20 ft (6.1 m)	Insert Jib



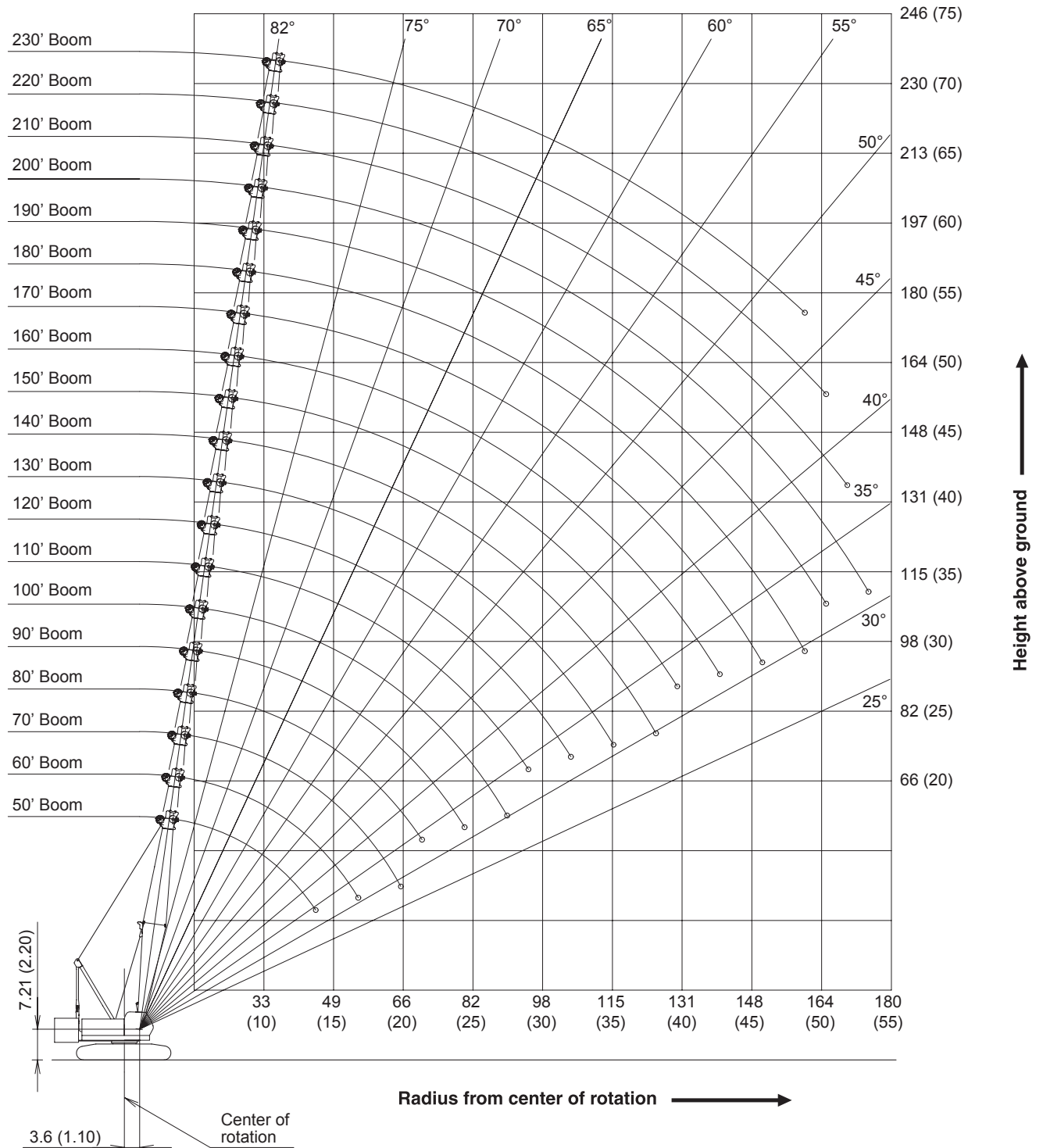
Main Boom - 200 ft (61.0 m)

Main Boom - 190 ft (57.9 m)
Fixed Jib - 60 ft (18.3 m)

Working Ranges

Main Boom

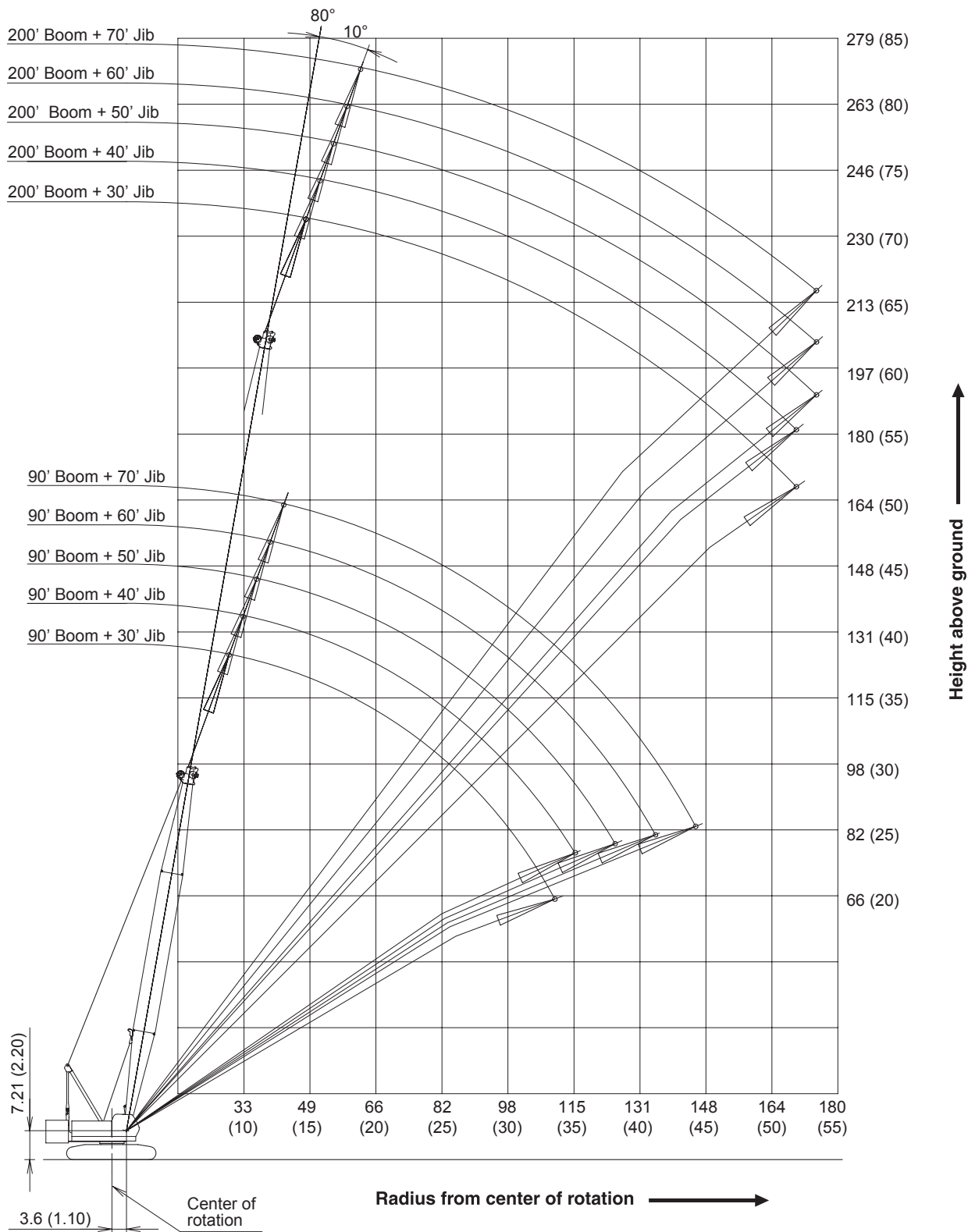
Unit : ft (m)



Working Ranges

Fixed Jib 10°

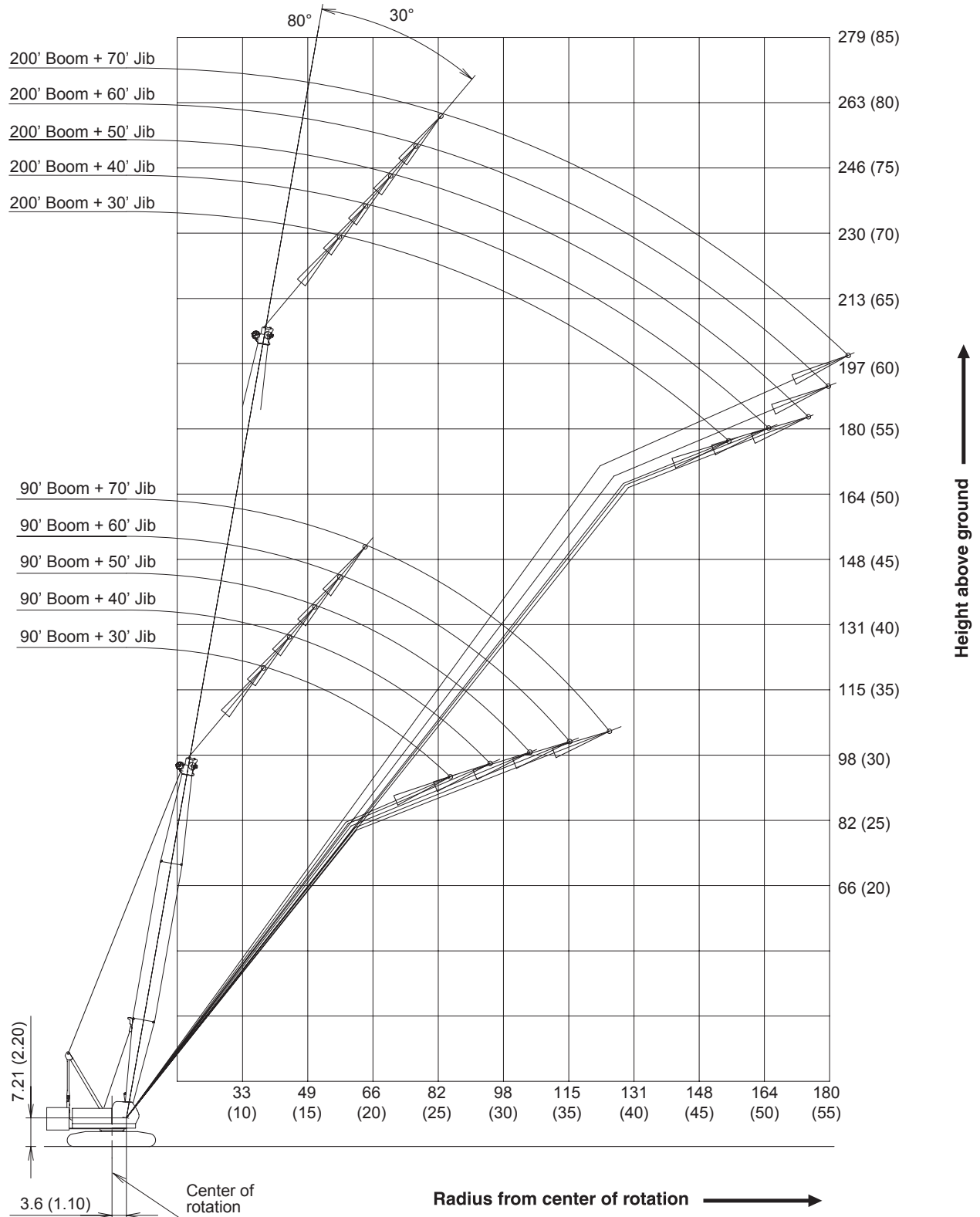
Unit : ft (m)



Working Ranges

Fixed Jib 30°

Unit : ft (m)



Supplemental Data

- Rated loads included in the charts are the maximum allowable freely suspended loads at a given boom length, boom angle and load radius, and have been determined for the machine standing level on firm supporting surface under ideal operating conditions. The user must limit or de-rate rated loads to allow for adverse conditions (such as soft or uneven ground, out-of-level conditions, wind, side loads, pendulum action, jerking or sudden stopping of loads, inexperience of personnel, multiple machine lifts, and traveling with a load).
- Rated loads do not exceed 75% of minimum tipping loads. Rated loads based on factors other than machine stability such as structural competence are shown by asterisk * in the charts.
- The machine must be reeved and set-up as stated in the operation manual and all the instruction manuals if these manuals are missing, obtain replacements.
 - The crane must be leveled to within 1% on a firm supporting surface.
 - Boom backstops are required for all boom length.
 - Gantry must be fully raised position for all operations.
- Do not attempt to lift where no radius on load is listed as crane may tip or collapse.
- Attempting to lift more than rated loads may cause machine to tip or collapse. Do not tip machine to determine rated loads.
- Weight of hooks, hook blocks, slings and other lifting devices are a part of the total load. Their total weight must be subtracted from the rated load to obtain the weight that can be lifted.
- When lifting over boom point with jib or auxiliary sheave, rated loads for the boom must be deducted as shown below.

Jib Length (ft)	Aux.	30'	40'	50'	60'	70'
Deductions (lbs)	700	2,400	3,200	4,200	5,200	6,200

When auxiliary sheave is used for 10 or 9 reeving parts of line, it is not required to deduct 700 lbs from the rated load.

- The total load that can be lifted by jib is limited by rated jib loads.
- Boom lengths for jib mounting are 90 ft (27.4 m) to 200 ft (61.0 m)
- The total load that can be lifted by the auxiliary sheave is the value for 700 lbs deducted from rated load for the boom (without auxiliary sheave installed); however, the auxiliary sheave rated load should not exceed 24,000 lbs.

- Boom lengths that can attach auxiliary sheave are from 50 ft (15.2 m) to 220 ft (67.1 m).
- The boom should be erected over the front of the crawlers, not laterally. When lifting from or lowering to the ground the boom length of 230 ft (70.1 m) and the boom length of 200 ft (61.0m) with jib, the blocks for erections must be placed at the end of the crawlers.
- Least stable position is over the side.
- Maximum hoist load for number of reeving parts of line for hoist rope.

Main Boom Hoist Loads

No. of Parts of Line	1	2	3	4	5
Maximum Loads (lbs)	25,000	50,000	75,000	100,000	125,000

No. of Parts of Line	6	7	8	9*	10*
Maximum Loads (lbs)	150,000	175,000	200,000	225,000	240,000

* - Use auxiliary sheave

Jib Hoist Loads

No. of Parts of Line	1
Maximum Loads (lbs)	24,000

Auxiliary Hoist Loads

No. of Parts of Line	1	2
Maximum Loads (lbs)	25,000	50,000

- Assembling the counterweight

76300 lbs counterweight (No.1 ~ No. 5)
14,300 lbs carbody weight

No. 4	No. 5
No. 2	No. 3
No. 1	

Counterweights



Carbody Weights

- Weight of recommended hook block

Hook Block	120USt	77USt	39USt	Ball Hook
Weight (lbs)	3,750	1,990	1,545	1,000

If the weight of the hook block to be used is lighter than the recommended weight, the jib may turn over backward or it is difficult to lower the empty hook block.

- Rated loads listed apply only to the machine as originally manufactured and designed by KOBELCO CONSTRUCTION MACHINERY CO., LTD. Modifications to this machine or use of equipment other than that specified can reduce operating capacity.
- Designed and rated to comply with ANSI Code B30.5.

Operation of this equipment in excess of rated loads or disregard of instruction voids the warranty.

CK1200G-2

SPECIFICATIONS

Main Boom Lift Capacity

Full Counterweight: 76,320 lbs Carbody Weight: 14,640

50' Boom			60' Boom			70' Boom			80' Boom			90' Boom		
Load Radius (ft)	Boom Angle (deg.)	360° Rated Load (lbs)	Load Radius (ft)	Boom Angle (deg.)	360° Rated Load (lbs)	Load Radius (ft)	Boom Angle (deg.)	360° Rated Load (lbs)	Load Radius (ft)	Boom Angle (deg.)	360° Rated Load (lbs)	Load Radius (ft)	Boom Angle (deg.)	360° Rated Load (lbs)
12.0	81.4	240,00*	13.5	81.4	210,000*	15.0	81.4	190,000*	16.5	81.4	171,000*	18.0	81.4	150,000*
13.0	80.2	220,000*	14.0	80.9	204,000*	16.0	80.5	177,000*	17.0	81.0	163,000*	19.0	80.7	140,000*
14.0	79.0	206,000*	15.0	79.9	190,000*	17.0	79.7	163,000*	18.0	80.3	150,000*	20.0	80.1	135,000*
15.0	77.9	191,000*	16.0	78.9	177,000*	18.0	78.9	150,000*	19.0	79.6	142,100*	22.0	78.8	122,400*
16.0	76.7	177,000*	17.0	78.0	163,000*	19.0	78.0	142,100*	20.0	78.8	135,000*	24.0	77.5	111,500
17.0	75.5	163,000*	18.0	77.0	150,000*	20.0	77.2	135,000*	22.0	77.4	122,400*	26.0	76.2	98,900
18.0	74.3	150,000*	19.0	76.0	142,100*	22.0	75.5	122,700*	24.0	75.9	111,500	28.0	74.8	88,800
19.0	73.1	142,100*	20.0	75.0	135,000*	24.0	73.8	111,700	26.0	74.4	98,900	30.0	73.5	80,400
20.0	71.9	135,000*	22.0	73.0	122,700*	26.0	72.1	99,200	28.0	72.9	88,800	32.0	72.2	73,400
22.0	69.5	122,600*	24.0	71.0	111,700	28.0	70.3	89,000	30.0	71.4	80,400	34.0	70.8	67,400
24.0	67.0	111,900	26.0	69.0	99,200	30.0	68.6	80,600	32.0	69.9	73,400	36.0	69.5	62,300
26.0	64.4	99,600	28.0	66.9	89,200	32.0	66.8	73,800	34.0	68.3	67,400	38.0	68.1	57,900
28.0	61.8	89,500	30.0	64.8	80,900	34.0	65.0	67,900	36.0	66.8	62,300	40.0	66.7	54,000
30.0	59.2	81,100	32.0	62.6	73,800	36.0	63.2	62,800	38.0	65.2	57,900	45.0	63.2	46,000
32.0	56.4	74,200	34.0	60.4	68,100	38.0	61.3	58,400	40.0	63.6	54,200	50.0	59.5	40,100
34.0	53.6	68,300	36.0	58.2	63,000	40.0	59.4	54,400	45.0	59.5	46,200	55.0	55.8	35,400
36.0	50.7	63,200	38.0	55.9	58,600	45.0	54.5	46,500	50.0	55.2	40,100	60.0	51.8	31,500
38.0	47.6	58,800	40.0	53.5	54,600	50.0	49.2	40,500	55.0	50.7	35,400	65.0	47.6	28,400
40.0	44.3	55,100	45.0	47.2	46,700	55.0	43.5	35,900	60.0	45.8	31,700	70.0	43.0	25,700
45.0	35.2	47,100	50.0	40.2	40,700	60.0	37.1	32,100	65.0	40.5	28,600	75.0	38.1	23,500
			55.0	31.9	36,100				70.0	34.6	26,000	80.0	32.5	21,600
Reeves		10	Reeves		9	Reeves		8	Reeves		7	Reeves		6
100' Boom			110' Boom			120' Boom			130' Boom			140' Boom		
Load Radius (ft)	Boom Angle (deg.)	360° Rated Load (lbs)	Load Radius (ft)	Boom Angle (deg.)	360° Rated Load (lbs)	Load Radius (ft)	Boom Angle (deg.)	360° Rated Load (lbs)	Load Radius (ft)	Boom Angle (deg.)	360° Rated Load (lbs)	Load Radius (ft)	Boom Angle (deg.)	360° Rated Load (lbs)
19.5	81.4	137,500*	20.9	81.4	128,600*	22.4	81.4	121,000*	23.9	81.4	100,000*	25.4	81.4	100,000*
20.0	81.1	135,000*	22.0	80.8	122,000*	24.0	80.6	111,100	24.0	81.4	100,000*	26.0	81.2	98,100
22.0	79.9	122,200*	24.0	79.8	111,300	26.0	79.7	98,500	26.0	80.5	98,300	28.0	80.3	87,900
24.0	78.8	111,300	26.0	78.7	98,500	28.0	78.7	88,400	28.0	79.6	88,100	30.0	79.5	79,500
26.0	77.6	98,700	28.0	77.7	88,400	30.0	77.7	80,000	30.0	78.7	79,800	32.0	78.7	72,500
28.0	76.4	88,600	30.0	76.6	80,000	32.0	76.7	72,900	32.0	77.8	72,700	34.0	77.8	66,500
30.0	75.2	80,200	32.0	75.5	72,900	34.0	75.8	67,000	34.0	76.9	66,700	36.0	77.0	61,500
32.0	74.0	73,100	34.0	74.4	67,000	36.0	74.8	61,900	36.0	76.0	61,700	38.0	76.1	57,000
34.0	72.8	67,200	36.0	73.3	61,900	38.0	73.8	57,500	38.0	75.1	57,300	40.0	75.3	53,100
36.0	71.6	62,100	38.0	72.3	57,500	40.0	72.8	53,500	40.0	74.1	53,300	45.0	73.2	45,100
38.0	70.4	57,700	40.0	71.2	53,500	45.0	70.3	45,600	45.0	71.8	45,400	50.0	71.0	39,000
40.0	69.2	53,700	45.0	68.4	45,600	50.0	67.7	39,400	50.0	69.5	39,400	55.0	68.8	34,300
45.0	66.1	45,800	50.0	65.5	39,600	55.0	65.1	34,800	55.0	67.1	34,600	60.0	66.6	30,400
50.0	62.9	39,900	55.0	62.6	34,800	60.0	62.4	30,800	60.0	64.7	30,600	65.0	64.4	27,100
55.0	59.6	35,000	60.0	59.6	31,000	65.0	59.7	27,700	65.0	62.2	27,500	70.0	62.1	24,400
60.0	56.2	31,300	65.0	56.5	27,700	70.0	56.8	25,100	70.0	59.7	24,900	75.0	59.7	22,200
65.0	52.6	27,900	70.0	53.3	25,100	75.0	53.9	22,700	75.0	57.1	22,400	80.0	57.3	20,200
70.0	48.9	25,300	75.0	50.0	22,900	80.0	50.9	20,700	80.0	54.4	20,500	85.0	54.8	18,500
75.0	45.0	23,100	80.0	46.5	20,900	85.0	47.7	19,100	85.0	51.6	18,900	90.0	52.3	16,900
80.0	40.7	21,100	85.0	42.7	19,100	90.0	44.4	17,600	90.0	48.8	17,400	95.0	49.6	15,600
85.0	36.0	19,600	90.0	38.7	17,800	95.0	40.8	16,300	95.0	45.7	16,000	100.0	46.9	14,500
90.0	30.8	18,000	95.0	34.3	16,500	100.0	37.0	15,200	100.0	42.5	14,700	105.0	44.0	13,400
						105.0	32.8	14,100	105.0	39.1	13,800	110.0	40.9	12,500
									110.0	35.5	13,000	115.0	37.7	11,600
									115.0	31.4	12,100	120.0	34.1	11,000
												125.0	30.3	10,300
Reeves		6	Reeves		6	Reeves		5	Reeves		4	Reeves		4

Note: Designed and rated to comply with ANSI Code B30.5
Capacities based on factors other than machine stability such as structural competence are shown by asterisk * in the charts.
Refer to notes on page 21.

CK1200G-2

SPECIFICATIONS

Main Boom Lift Capacity

Full Counterweight: 76,320 lbs Carbody Weight: 14,640

150' Boom			160' Boom			170' Boom			180' Boom			190' Boom		
Load Radius (ft)	Boom Angle (deg.)	360° Rated Load (lbs)	Load Radius (ft)	Boom Angle (deg.)	360° Rated Load (lbs)	Load Radius (ft)	Boom Angle (deg.)	360° Rated Load (lbs)	Load Radius (ft)	Boom Angle (deg.)	360° Rated Load (lbs)	Load Radius (ft)	Boom Angle (deg.)	360° Rated Load (lbs)
26.9	81.4	92,800	28.4	81.4	75,000*	29.9	81.4	75,000*	31.4	81.4	73,400	32.9	81.4	66,300*
28.0	81.0	87,700	30.0	80.8	75,000*	30.0	81.4	75,000*	32.0	81.2	71,800	34.0	81.1	65,400
30.0	80.2	79,300	32.0	80.1	72,300	32.0	80.7	72,000	34.0	80.6	65,900	36.0	80.5	60,400
32.0	79.4	72,300	34.0	79.4	66,300	34.0	80.0	66,100	36.0	79.9	60,600	38.0	79.8	55,900
34.0	78.7	66,300	36.0	78.6	61,200	36.0	79.3	60,800	38.0	79.3	56,200	40.0	79.2	52,000
36.0	77.9	61,000	38.0	77.9	56,800	38.0	78.6	56,400	40.0	78.6	52,200	45.0	77.7	44,000
38.0	77.1	56,600	40.0	77.2	52,900	40.0	77.9	52,400	45.0	77.0	44,300	50.0	76.1	37,900
40.0	76.3	52,600	45.0	75.3	44,900	45.0	76.2	44,500	50.0	75.4	38,100	55.0	74.6	33,000
45.0	74.3	44,700	50.0	73.5	38,800	50.0	74.5	38,500	55.0	73.7	33,200	60.0	73.0	29,100
50.0	72.3	38,800	55.0	71.6	33,900	55.0	72.7	33,700	60.0	72.0	29,500	65.0	71.4	26,000
55.0	70.3	33,900	60.0	69.7	30,200	60.0	70.9	29,700	65.0	70.3	26,200	70.0	69.8	23,100
60.0	68.3	29,900	65.0	67.8	26,800	65.0	69.1	26,400	70.0	68.6	23,500	75.0	68.2	20,900
65.0	66.2	26,800	70.0	65.8	24,200	70.0	67.3	23,800	75.0	66.9	21,100	80.0	66.6	18,900
70.0	64.1	24,200	75.0	63.8	21,800	75.0	65.5	21,600	80.0	65.2	19,100	85.0	64.9	17,100
75.0	61.9	21,800	80.0	61.8	19,800	80.0	63.6	19,600	85.0	63.4	17,600	90.0	63.2	15,600
80.0	59.7	19,800	85.0	59.7	18,200	85.0	61.7	17,800	90.0	61.6	16,000	95.0	61.5	14,300
85.0	57.5	18,000	90.0	57.6	16,700	90.0	59.8	16,300	95.0	59.8	14,700	100.0	59.8	13,200
90.0	55.2	16,700	95.0	55.5	15,400	95.0	57.8	14,900	100.0	57.9	13,400	105.0	58.0	12,100
95.0	52.8	15,400	100.0	53.3	14,100	100.0	55.8	13,800	105.0	56.0	12,300	110.0	56.2	11,000
100.0	50.4	14,100	105.0	51.0	13,200	105.0	53.7	12,700	110.0	54.1	11,400	115.0	54.4	10,100
105.0	47.8	13,200	110.0	48.6	12,100	110.0	51.6	11,600	115.0	52.1	10,500	120.0	52.5	9,400
110.0	45.2	12,100	115.0	46.2	11,200	115.0	49.4	11,000	120.0	50.0	9,900	125.0	50.6	8,800
115.0	42.4	11,200	120.0	43.7	10,500	120.0	47.1	10,100	125.0	47.9	9,000	130.0	48.6	7,900
120.0	39.5	10,500	125.0	41.0	9,700	125.0	44.7	9,400	130.0	45.7	8,300	135.0	46.5	7,200
125.0	36.3	9,900	130.0	38.1	9,200	130.0	42.3	8,800	135.0	43.4	7,700	140.0	44.4	6,900
130.0	32.9	9,200	135.0	35.1	8,500	135.0	39.7	8,100	140.0	41.0	7,200	145.0	42.2	6,100
			140.0	31.8	7,900	140.0	37.0	7,400	145.0	38.5	6,800	150.0	39.9	5,700
						145.0	34.0	7,000	150.0	35.9	6,100	155.0	37.4	5,200
						150.0	30.9	6,600	155.0	33.0	5,700	160.0	34.9	4,800
									160.0	30.0	5,200	165.0	32.1	4,400
Reeves		4	Reeves		3	Reeves		3	Reeves		3	Reeves		3
200' Boom			210' Boom			220' Boom			230' Boom					
Load Radius (ft)	Boom Angle (deg.)	360° Rated Load (lbs)	Load Radius (ft)	Boom Angle (deg.)	360° Rated Load (lbs)	Load Radius (ft)	Boom Angle (deg.)	360° Rated Load (lbs)	Load Radius (ft)	Boom Angle (deg.)	360° Rated Load (lbs)			
34.4	81.4	50,000*	35.9	81.4	50,000*	37.4	81.4	48,200*	38.9	81.4	43,200*			
36.0	81.9	50,000*	36.0	81.4	50,000*	38.0	81.2	47,800*	40.0	81.1	42,700*			
38.0	80.4	50,000*	38.0	80.8	50,000*	40.0	80.7	46,700*	45.0	79.9	40,100*			
40.0	79.8	50,000*	40.0	80.3	50,000*	45.0	79.4	43,400	50.0	78.6	37,000			
45.0	78.3	44,000	45.0	78.9	43,800	50.0	78.1	37,400	55.0	77.3	32,100			
50.0	76.8	37,900	50.0	77.5	37,600	55.0	76.7	32,600	60.0	76.0	28,400			
55.0	75.4	33,000	55.0	76.1	32,800	60.0	75.4	28,600	65.0	74.7	25,100			
60.0	73.9	29,300	60.0	74.7	28,800	65.0	74.0	25,300	70.0	73.4	22,200			
65.0	72.4	26,000	65.0	73.2	25,700	70.0	72.7	22,700	75.0	72.1	20,000			
70.0	70.9	23,300	70.0	71.8	22,900	75.0	71.3	20,200	80.0	70.8	18,000			
75.0	69.3	20,900	75.0	70.4	20,700	80.0	69.9	18,200	85.0	69.5	16,300			
80.0	67.8	18,900	80.0	68.9	18,700	85.0	68.5	16,700	90.0	68.2	14,700			
85.0	66.2	17,100	85.0	67.4	16,900	90.0	67.1	15,200	95.0	66.8	13,400			
90.0	64.7	15,600	90.0	66.0	15,400	95.0	65.7	13,800	100.0	65.4	12,300			
95.0	63.1	14,300	95.0	64.4	14,100	100.0	64.2	12,500	105.0	64.1	11,200			
100.0	61.4	13,200	100.0	62.9	12,700	105.0	62.8	11,400	110.0	62.7	10,100			
105.0	59.8	12,100	105.0	61.4	11,900	110.0	61.3	10,500	115.0	61.3	9,200			
110.0	58.1	11,200	110.0	59.8	10,800	115.0	59.8	9,700	120.0	59.8	8,300			
115.0	56.4	10,300	115.0	58.2	9,900	120.0	58.3	8,800	125.0	58.4	7,400			
120.0	54.7	9,400	120.0	56.6	9,000	125.0	56.7	7,900	130.0	56.9	6,800			
125.0	52.9	8,800	125.0	54.9	8,300	130.0	55.2	7,200	135.0	55.4	6,100			
130.0	51.1	7,900	130.0	53.2	7,700	135.0	53.6	6,600	140.0	53.9	5,500			
135.0	49.2	7,200	135.0	51.5	6,800	140.0	51.9	5,900	145.0	52.3	4,800			
140.0	47.3	6,800	140.0	49.7	6,300	145.0	50.2	5,200	150.0	50.7	4,400			
145.0	45.3	6,100	145.0	47.9	5,700	150.0	48.5	4,800	155.0	49.1	3,900			
150.0	43.2	5,700	150.0	46.1	5,200	155.0	46.8	4,400	160.0	47.4	3,500			
155.0	41.1	5,000	155.0	44.1	4,600	160.0	44.9	3,900						
160.0	38.8	4,600	160.0	42.1	4,100	165.0	43.0	3,500						
165.0	36.5	4,100	165.0	40.0	3,700									
170.0	34.0	3,900	170.0	37.8	3,500									
175.0	31.3	3,500												
Reeves		2	Reeves		2	Reeves		2	Reeves		2			

Note: Designed and rated to comply with ANSI Code B30.5
 Capacities based on factors other than machine stability such as structural competence are shown by asterisk * in the charts.
 Refer to notes on page 21.

CK1200G-2

SPECIFICATIONS

Fixed Jib Lift Capacity

Full Counterweight: 76,320 lbs Carbody Weight: 14,640

90' Boom																							
30 ft Jib						40 ft Jib						50 ft Jib						60 ft Jib					
Offset Angle (deg.)						Offset Angle (deg.)						Offset Angle (deg.)						Offset Angle (deg.)					
10			30			10			30			10			30			10			30		
Load Radius (ft)	Boom Angle (deg.)	Rated Load (lbs)	Load Radius (ft)	Boom Angle (deg.)	Rated Load (lbs)	Load Radius (ft)	Boom Angle (deg.)	Rated Load (lbs)	Load Radius (ft)	Boom Angle (deg.)	Rated Load (lbs)	Load Radius (ft)	Boom Angle (deg.)	Rated Load (lbs)	Load Radius (ft)	Boom Angle (deg.)	Rated Load (lbs)	Load Radius (ft)	Boom Angle (deg.)	Rated Load (lbs)	Load Radius (ft)	Boom Angle (deg.)	Rated Load (lbs)
30.0	79.9	24,000*				34.0	79.6	24,000*				38.0	79.4	20,000*				45.0	78.0	18,000*			
32.0	78.9	24,000*				36.0	78.7	24,000*				40.0	78.5	20,000*				50.0	76.0	18,000*			
34.0	77.9	24,000*				38.0	77.8	24,000*				45.0	76.4	20,000*				55.0	74.0	18,000*			
36.0	76.9	24,000*				40.0	76.9	24,000*				50.0	74.3	20,000*				60.0	72.0	18,000*			
38.0	75.9	24,000*				45.0	74.6	24,000*				55.0	72.1	20,000*	55.0	78.5	11,400*	65.0	69.9	17,900*	60.0	79.2	9,200*
40.0	74.9	24,000*	40.0	79.4	21,000*	50.0	72.3	24,000*	50.0	77.7	15,400*	60.0	69.9	20,000*	60.0	76.2	11,400*	70.0	67.8	16,600*	65.0	77.0	9,200*
45.0	72.4	24,000*	45.0	76.8	21,000*	55.0	69.9	24,000*	55.0	75.2	15,400*	65.0	67.7	20,000*	65.0	73.9	11,400*	75.0	65.7	15,500*	70.0	74.8	9,200*
50.0	69.9	24,000*	50.0	74.2	21,000*	60.0	67.5	24,000*	60.0	72.8	15,400*	70.0	65.4	19,200*	70.0	71.5	11,400*	80.0	63.5	14,500	75.0	72.6	9,200*
55.0	67.3	24,000*	55.0	71.5	21,000*	65.0	65.0	24,000*	65.0	70.2	15,400*	75.0	63.0	17,900*	75.0	69.1	11,400*	85.0	61.3	13,700	80.0	70.4	9,200*
60.0	64.7	24,000*	60.0	68.8	21,000*	70.0	62.5	23,300*	70.0	67.6	15,100*	80.0	60.7	16,800	80.0	66.6	11,200*	90.0	59.0	13,000	85.0	68.0	9,100*
65.0	61.9	24,000*	65.0	66.0	21,000*	75.0	60.0	21,800*	75.0	65.0	14,400*	85.0	58.2	15,900	85.0	64.0	10,800*	95.0	56.6	12,300	90.0	65.6	8,700*
70.0	59.1	24,000*	70.0	63.1	20,400*	80.0	57.3	20,500	80.0	62.2	13,900*	90.0	55.7	15,100	90.0	61.4	10,400*	100.0	54.2	11,700	95.0	63.2	8,400*
75.0	56.3	23,900	75.0	60.1	19,600*	85.0	54.6	19,400	85.0	59.3	13,500*	95.0	53.0	14,300	95.0	58.6	10,100*	105.0	51.7	11,100	100.0	60.6	8,100*
80.0	53.3	21,900	80.0	57.0	18,900*	90.0	51.7	18,400	90.0	56.3	13,100*	100.0	50.3	13,600	100.0	55.7	9,800*	110.0	49.0	10,600	105.0	58.0	7,900*
85.0	50.1	20,200	85.0	53.7	18,300	95.0	48.7	17,400	95.0	53.2	12,700*	105.0	47.4	13,000	105.0	52.7	9,500*	115.0	46.3	10,100	110.0	55.2	7,700*
90.0	46.8	18,700				100.0	45.6	16,400				110.0	44.4	12,400				120.0	43.4	9,700	115.0	52.2	7,500*
95.0	43.3	17,300				105.0	42.2	15,300				115.0	41.2	11,900				125.0	40.3	9,400			
100.0	39.6	16,100				110.0	38.6	14,300				120.0	37.7	11,500				130.0	36.9	9,000			
105.0	35.4	15,100				115.0	34.6	13,400				125.0	33.9	11,100				135.0	33.3	8,700			
110.0	30.8	14,100																					
Reeves	1		Reeves	1		Reeves	1		Reeves	1		Reeves	1		Reeves	1		Reeves	1		Reeves	1	

90' Boom																							
70 ft Jib																							
Offset Angle (deg.)																							
10			30																				
Load Radius (ft)	Boom Angle (deg.)	Rated Load (lbs)	Load Radius (ft)	Boom Angle (deg.)	Rated Load (lbs)																		
45.0	79.4	15,700*																					
50.0	77.6	15,400*																					
55.0	75.7	15,100*																					
60.0	73.8	14,800*																					
65.0	71.9	14,500*	65.0	79.8	8,100*																		
70.0	69.9	14,300*	70.0	77.8	8,100*																		
75.0	67.9	13,900*	75.0	75.7	8,100*																		
80.0	65.9	13,000	80.0	73.6	8,100*																		
85.0	63.9	12,200	85.0	71.5	7,900*																		
90.0	61.8	11,500	90.0	69.3	7,600*																		
95.0	59.7	10,900	95.0	67.1	7,200*																		
100.0	57.5	10,300	100.0	64.8	7,000*																		
105.0	55.2	9,800	105.0	62.4	6,800*																		
110.0	52.9	9,400	110.0	59.9	6,500*																		
115.0	50.4	8,900	115.0	57.3	6,300*																		
120.0	47.9	8,500	120.0	54.6	6,200*																		
125.0	45.2	8,200	125.0	51.8	6,000*																		
130.0	42.9	7,900																					
135.0	39.4	7,600																					
140.0	36.2	7,300																					
145.0	32.6	7,100																					
Reeves	1		Reeves	1																			

Note: Designed and rated to comply with ANSI Code B30.5

Capacities based on factors other than machine stability such as structural competence are shown by asterisk * in the charts.

Refer to notes on page 21.

CK1200G-2

SPECIFICATIONS

Fixed Jib Lift Capacity

Full Counterweight: 76,320 lbs Carbody Weight: 14,640

100' Boom																							
30 ft Jib						40 ft Jib						50 ft Jib						60 ft Jib					
Offset Angle (deg.)						Offset Angle (deg.)						Offset Angle (deg.)						Offset Angle (deg.)					
10			30			10			30			10			30			10			30		
Load Radius (ft)	Boom Angle (deg.)	Rated Load (lbs)	Load Radius (ft)	Boom Angle (deg.)	Rated Load (lbs)	Load Radius (ft)	Boom Angle (deg.)	Rated Load (lbs)	Load Radius (ft)	Boom Angle (deg.)	Rated Load (lbs)	Load Radius (ft)	Boom Angle (deg.)	Rated Load (lbs)	Load Radius (ft)	Boom Angle (deg.)	Rated Load (lbs)	Load Radius (ft)	Boom Angle (deg.)	Rated Load (lbs)	Load Radius (ft)	Boom Angle (deg.)	Rated Load (lbs)
32.0	79.8	24,000*				36.0	79.5	24,000*				40.0	79.3	20,000*				45.0	78.8	18,000*			
34.0	78.9	24,000*				38.0	78.7	24,000*				45.0	77.4	20,000*				50.0	76.9	18,000*			
36.0	77.9	24,000*				40.0	77.8	24,000*				50.0	75.4	20,000*				55.0	75.1	18,000*			
38.0	77.0	24,000*				45.0	75.7	24,000*				55.0	73.4	20,000*	55.0	79.3	11,400*	60.0	73.2	18,000*			
40.0	76.1	24,000*				50.0	73.6	24,000*	50.0	78.6	15,400*	60.0	71.3	20,000*	60.0	77.2	11,400*	65.0	71.2	18,000*	65.0	77.9	9,200*
45.0	73.8	24,000*	45.0	77.9	21,000*	55.0	71.4	24,000*	55.0	76.4	15,400*	65.0	69.3	20,000*	65.0	75.1	11,400*	70.0	69.3	17,500*	70.0	75.9	9,200*
50.0	71.5	24,000*	50.0	75.5	21,000*	60.0	69.2	24,000*	60.0	74.1	15,400*	70.0	67.2	20,000*	70.0	72.9	11,400*	75.0	67.3	16,300*	75.0	73.9	9,200*
55.0	69.2	24,000*	55.0	73.1	21,000*	65.0	67.0	24,000*	65.0	71.8	15,400*	75.0	65.0	18,900*	75.0	70.7	11,400*	80.0	65.3	15,300*	80.0	71.8	9,200*
60.0	66.8	24,000*	60.0	70.6	21,000*	70.0	64.7	24,000*	70.0	69.5	15,400*	80.0	62.8	17,800	80.0	68.4	11,200*	85.0	63.3	14,400	85.0	69.6	9,200*
65.0	64.3	24,000*	65.0	68.1	21,000*	75.0	62.4	23,100*	75.0	67.0	14,900*	85.0	60.6	16,800	85.0	66.1	11,100*	90.0	61.2	13,700	90.0	67.5	8,900*
70.0	61.8	24,000*	70.0	65.5	21,000*	80.0	60.0	21,800	80.0	64.6	14,300*	90.0	58.3	15,900	90.0	63.7	10,700*	95.0	59.0	12,900	95.0	65.2	8,600*
75.0	59.2	23,600	75.0	62.8	20,300*	85.0	57.5	20,200	85.0	62.0	13,900*	95.0	56.0	15,100	95.0	61.3	10,400*	100.0	56.8	12,300	100.0	62.9	8,400*
80.0	56.6	21,600	80.0	60.1	19,600*	90.0	55.0	18,700	90.0	59.4	13,500*	100.0	53.5	14,400	100.0	58.7	10,100*	105.0	54.6	11,700	105.0	60.6	8,100*
85.0	53.8	19,900	85.0	57.3	19,000	95.0	52.3	17,200	95.0	56.6	13,100*	105.0	51.0	13,700	105.0	56.1	9,800*	110.0	52.2	11,200	110.0	58.1	7,900*
90.0	51.0	18,400	90.0	54.3	18,400	100.0	49.6	16,000	100.0	53.8	12,700*	110.0	48.4	13,200	110.0	63.3	9,600*	115.0	49.8	10,700	115.0	55.5	7,700*
95.0	48.0	17,000	95.0	51.2	17,300	105.0	46.8	15,000				115.0	45.6	12,600				120.0	47.3	10,300	120.0	52.9	7,500*
100.0	44.8	15,800				110.0	43.7	14,000				120.0	42.7	12,100				125.0	44.6	9,900			
105.0	41.5	14,800				115.0	40.5	13,100				125.0	39.6	11,700				130.0	41.8	9,500			
110.0	37.9	13,800				120.0	37.1	12,300				130.0	36.3	11,100				135.0	38.8	9,200			
115.0	33.9	12,900				125.0	33.2	11,600				135.0	32.6	10,400				140.0	35.6	8,900			
																		145.0	32.0	8,600			
Reeves	1		Reeves	1		Reeves	1		Reeves	1		Reeves	1		Reeves	1		Reeves	1		Reeves	1	

100' Boom																							
70 ft Jib																							
Offset Angle (deg.)																							
10			30																				
Load Radius (ft)	Boom Angle (deg.)	Rated Load (lbs)	Load Radius (ft)	Boom Angle (deg.)	Rated Load (lbs)																		
45.0	80.0	15,800*																					
50.0	78.3	15,500*																					
55.0	76.6	15,200*																					
60.0	74.8	14,900*																					
65.0	73.0	14,600*																					
70.0	71.2	14,400*	70.0	78.6	8,100*																		
75.0	69.3	14,200*	75.0	76.7	8,100*																		
80.0	67.5	13,600	80.0	74.7	8,100*																		
85.0	65.6	12,800	85.0	72.8	8,000*																		
90.0	63.7	12,100	90.0	70.8	7,700*																		
95.0	61.7	11,400	95.0	68.7	7,400*																		
100.0	59.7	10,900	100.0	66.6	7,200*																		
105.0	57.6	10,300	105.0	64.4	6,900*																		
110.0	55.5	9,900	110.0	62.2	6,700*																		
115.0	53.3	9,400	115.0	59.9	6,500*																		
120.0	51.1	9,000	120.0	57.5	6,300*																		
125.0	48.7	8,600	125.0	55.0	6,200*																		
130.0	46.3	8,300	130.0	52.4	6,000*																		
135.0	43.7	8,000																					
140.0	41.0	7,700																					
145.0	38.1	7,400																					
150.0	35.0	7,200																					
155.0	31.5	7,000																					
Reeves	1		Reeves	1																			

Note: Designed and rated to comply with ANSI Code B30.5
Capacities based on factors other than machine stability such as structural competence are shown by asterisk * in the charts.
Refer to notes on page 21.

CK1200G-2

SPECIFICATIONS

Fixed Jib Lift Capacity

Full Counterweight: 76,320 lbs Carbody Weight: 14,640

110' Boom																																			
30 ft Jib						40 ft Jib						50 ft Jib						60 ft Jib																	
Offset Angle (deg.)						Offset Angle (deg.)						Offset Angle (deg.)						Offset Angle (deg.)																	
10			30			10			30			10			30			10			30														
Load Radius (ft)	Boom Angle (deg.)	Rated Load (lbs)	Load Radius (ft)	Boom Angle (deg.)	Rated Load (lbs)	Load Radius (ft)	Boom Angle (deg.)	Rated Load (lbs)	Load Radius (ft)	Boom Angle (deg.)	Rated Load (lbs)	Load Radius (ft)	Boom Angle (deg.)	Rated Load (lbs)	Load Radius (ft)	Boom Angle (deg.)	Rated Load (lbs)	Load Radius (ft)	Boom Angle (deg.)	Rated Load (lbs)	Load Radius (ft)	Boom Angle (deg.)	Rated Load (lbs)												
34.0	79.7	24,000*				38.0	79.5	24,000*				45.0	78.2	20,000*				45.0	79.5	18,000*															
36.0	78.8	24,000*				40.0	78.7	24,000*				50.0	76.3	20,000*				50.0	77.7	18,000*															
38.0	78.0	24,000*				45.0	76.7	24,000*				55.0	74.4	20,000*				55.0	76.0	18,000*															
40.0	77.1	24,000*				50.0	74.7	24,000*				50.0	79.4	15,400*				60.0	72.6	20,000*				60.0	74.2	18,000*									
45.0	75.0	24,000*				55.0	72.7	24,000*				55.0	77.4	15,400*				65.0	70.6	20,000*				60.0	78.1	11,400*	65.0	72.4	18,000*	65.0	78.7	9,200*			
50.0	72.9	24,000*				50.0	76.6	21,000*				60.0	70.7	24,000*				60.0	75.3	15,400*				70.0	68.7	20,000*	65.0	76.1	11,400*	70.0	70.6	18,000*	70.0	76.8	9,200*
55.0	70.7	24,000*				55.0	74.4	21,000*				65.0	68.6	24,000*				65.0	73.2	15,400*				75.0	66.7	19,800	70.0	74.1	11,400*	75.0	68.8	17,000*	75.0	74.9	9,200*
60.0	68.5	24,000*				60.0	72.1	21,000*				70.0	66.5	24,000*				70.0	71.0	15,400*				80.0	64.7	18,700	75.0	72.1	11,400*	80.0	66.9	16,000	80.0	73.0	9,200*
65.0	66.3	24,000*				65.0	69.8	21,000*				75.0	64.4	23,600				75.0	68.8	15,200*				85.0	62.7	17,700	80.0	70.0	11,400*	85.0	65.0	15,100	85.0	71.0	9,200*
70.0	64.0	24,000*				70.0	67.5	21,000*				80.0	62.2	21,600				80.0	66.5	14,700*				90.0	60.6	16,700	85.0	67.9	11,300*	90.0	63.1	14,300	90.0	69.0	9,200*
75.0	61.7	23,300				75.0	65.1	20,900*				85.0	60.0	19,900				85.0	64.2	14,300*				95.0	58.4	15,900	90.0	65.7	11,000*	95.0	61.1	13,600	95.0	67.0	8,900*
80.0	59.3	21,300				80.0	62.6	20,200*				90.0	57.7	18,300				90.0	61.9	13,800*				100.0	56.2	15,100	95.0	63.5	10,600*	100.0	59.1	12,900	100.0	64.9	8,600*
85.0	56.8	19,600				85.0	60.1	19,500				95.0	55.3	16,900				95.0	59.4	13,400*				105.0	54.0	14,500	100.0	61.2	10,300*	105.0	57.0	12,300	105.0	62.7	8,300*
90.0	54.3	18,100				90.0	57.5	18,400				100.0	52.9	15,700				100.0	56.9	13,100*				110.0	51.6	13,900	105.0	58.8	10,000*	110.0	54.9	11,800	110.0	60.5	8,100*
95.0	51.7	16,600				95.0	54.8	17,000				105.0	50.4	14,600				105.0	54.3	12,800				115.0	49.2	12,900	110.0	56.4	9,800*	115.0	52.7	11,300	115.0	58.2	7,900*
100.0	48.9	15,500				100.0	51.9	15,700				110.0	47.8	13,700										120.0	46.7	12,100	115.0	53.8	9,600*	120.0	50.5	10,800	120.0	55.9	7,700*
105.0	46.1	14,400				115.0	45.0	12,700				125.0	44.0	11,400				125.0	48.1	10,400	125.0	53.4	7,500*												
110.0	43.1	13,400				120.0	42.1	11,900				130.0	41.2	10,700				130.0	45.7	10,000															
115.0	39.9	12,500				125.0	39.0	11,200				135.0	38.2	10,100				135.0	43.1	9,700															
120.0	36.4	11,700				130.0	35.7	10,600				140.0	35.0	9,500				140.0	40.4	9,300															
125.0	32.6	11,000				135.0	32.0	10,000				145.0	31.5	9,000				145.0	37.5	9,100															
																		150.0	34.4	8,600															
																		155.0	31.0	8,100															
Reeves	1		Reeves	1		Reeves	1		Reeves	1		Reeves	1		Reeves	1		Reeves	1		Reeves	1													

110' Boom																									
70 ft Jib																									
Offset Angle (deg.)																									
10			30																						
Load Radius (ft)	Boom Angle (deg.)	Rated Load (lbs)	Load Radius (ft)	Boom Angle (deg.)	Rated Load (lbs)																				
50.0	79.0	15,600*																							
55.0	77.3	15,300*																							
60.0	75.7	15,000*																							
65.0	74.0	14,800*																							
70.0	72.3	14,500*				70.0	79.3	8,100*																	
75.0	70.6	14,300*				75.0	77.5	8,100*																	
80.0	68.8	14,100				80.0	75.7	8,100*																	
85.0	67.1	13,400				85.0	73.9	8,100*																	
90.0	65.3	12,700				90.0	72.0	7,900*																	
95.0	63.4	12,000				95.0	70.1	7,600*																	
100.0	61.6	11,400				100.0	68.2	7,400*																	
105.0	59.7	10,900				105.0	66.2	7,100*																	
110.0	57.8	10,400				110.0	64.2	6,900*																	
115.0	55.8	9,900				115.0	62.1	6,700*																	
120.0	53.7	9,500				120.0	59.9	6,50*																	
125.0	51.6	9,100				125.0	57.7	6,300*																	
130.0	49.4	8,700	130.0	55.4	6,200*																				
135.0	47.2	8,400	135.0	53.0	6,000*																				
140.0	44.8	8,100																							
145.0	42.3	7,800																							
150.0	39.7	7,600																							
155.0	36.9	7,300																							
160.0	33.8	7,100																							
165.0	30.5	6,900																							
Reeves	1		Reeves	1																					

Note: Designed and rated to comply with ANSI Code B30.5

Capacities based on factors other than machine stability such as structural competence are shown by asterisk * in the charts.

Refer to notes on page 21.

CK1200G-2

SPECIFICATIONS

Fixed Jib Lift Capacity

Full Counterweight: 76,320 lbs Carbody Weight: 14,640

120' Boom																							
30 ft Jib						40 ft Jib						50 ft Jib						60 ft Jib					
Offset Angle (deg.)						Offset Angle (deg.)						Offset Angle (deg.)						Offset Angle (deg.)					
10			30			10			30			10			30			10			30		
Load Radius (ft)	Boom Angle (deg.)	Rated Load (lbs)	Load Radius (ft)	Boom Angle (deg.)	Rated Load (lbs)	Load Radius (ft)	Boom Angle (deg.)	Rated Load (lbs)	Load Radius (ft)	Boom Angle (deg.)	Rated Load (lbs)	Load Radius (ft)	Boom Angle (deg.)	Rated Load (lbs)	Load Radius (ft)	Boom Angle (deg.)	Rated Load (lbs)	Load Radius (ft)	Boom Angle (deg.)	Rated Load (lbs)	Load Radius (ft)	Boom Angle (deg.)	Rated Load (lbs)
36.0	79.6	24,000*				40.0	79.4	24,000*				45.0	78.9	20,000*				50.0	78.4	18,000*			
38.0	78.8	24,000*				45.0	77.6	24,000*				50.0	77.1	20,000*				55.0	76.8	18,000*			
40.0	78.0	24,000*				50.0	75.7	24,000*				55.0	75.4	20,000*				60.0	75.1	18,000*			
45.0	76.1	24,000*	45.0	79.6	21,000*	55.0	73.8	24,000*	55.0	78.2	15,400*	60.0	73.6	20,000*	60.0	78.8	11,400*	65.0	73.4	18,000*	65.0	79.4	9,200*
50.0	74.1	24,000*	50.0	77.5	21,000*	60.0	71.9	24,000*	60.0	76.3	15,400*	65.0	71.8	20,000*	65.0	77.0	11,400*	70.0	71.7	18,000*	70.0	77.6	9,200*
55.0	72.1	24,000*	55.0	75.5	21,000*	65.0	70.0	24,000*	65.0	74.3	15,400*	70.0	70.0	20,000*	70.0	75.1	11,400*	75.0	70.0	17,800	75.0	75.9	9,200*
60.0	70.0	24,000*	60.0	73.4	21,000*	70.0	68.1	24,000*	70.0	72.3	15,400*	75.0	68.2	20,000*	75.0	73.2	11,400*	80.0	68.3	16,700	80.0	74.1	9,200*
65.0	68.0	24,000*	65.0	71.3	21,000*	75.0	66.1	23,400	75.0	70.3	15,400*	80.0	66.3	19,500	80.0	71.3	11,400*	85.0	66.5	15,800	85.0	72.2	9,200*
70.0	65.9	24,000*	70.0	69.2	21,000*	80.0	64.1	21,400	80.0	68.2	15,100*	85.0	64.4	18,500	85.0	69.4	11,400*	90.0	64.7	15,000	90.0	70.4	9,200*
75.0	63.7	23,100	75.0	67.0	21,000*	85.0	62.1	19,700	85.0	66.1	14,600*	90.0	62.5	17,600	90.0	67.4	11,200*	95.0	62.9	14,200	95.0	68.5	9,100*
80.0	61.6	21,100	80.0	64.7	20,800*	90.0	60.0	18,200	90.0	64.0	14,200*	95.0	60.5	16,700	95.0	65.3	10,900*	100.0	61.0	13,500	100.0	66.6	8,800*
85.0	59.3	19,400	85.0	62.4	19,900	95.0	57.8	16,700	95.0	61.7	13,800*	100.0	58.5	15,700	100.0	63.2	10,600*	105.0	59.2	12,900	105.0	64.6	8,500*
90.0	57.0	17,900	90.0	60.1	18,300	100.0	55.6	15,500	100.0	59.5	13,400*	105.0	56.5	14,700	105.0	61.1	10,300*	110.0	57.2	12,400	110.0	62.6	8,300*
95.0	54.7	16,500	95.0	57.7	16,800	105.0	53.4	14,500	105.0	57.1	13,100	110.0	54.4	13,700	110.0	58.9	10,000*	115.0	55.2	11,800	115.0	60.5	8,100*
100.0	52.3	15,300	100.0	55.2	15,600	110.0	51.0	13,500	110.0	54.7	12,800	115.0	52.2	12,700	115.0	56.6	9,800*	120.0	53.2	11,300	120.0	58.4	7,900*
105.0	49.7	14,200	105.0	52.6	14,500	115.0	48.6	12,600	115.0	52.2	12,500	120.0	49.9	11,900	120.0	54.3	9,600*	125.0	51.1	10,900	125.0	56.1	7,700*
110.0	47.1	13,300				120.0	46.1	11,800				125.0	47.6	11,200	125.0	51.8	9,400*	130.0	48.9	10,500	130.0	53.8	7,500*
115.0	44.4	12,300				125.0	43.4	11,000				130.0	45.1	10,500				135.0	46.6	10,000	135.0	51.4	7,400*
120.0	41.5	11,600				130.0	40.6	10,400				135.0	42.6	9,900				140.0	44.3	9,400			
125.0	38.4	10,800				135.0	37.7	9,800				140.0	39.9	9,300				145.0	41.8	8,900			
130.0	35.1	10,200				140.0	34.4	9,200				145.0	37.0	8,800				150.0	39.2	8,400			
135.0	31.4	9,600										150.0	33.8	8,300				155.0	36.3	7,900			
																		160.0	33.3	7,500			
Reeves	1		Reeves	1		Reeves	1		Reeves	1		Reeves	1		Reeves	1		Reeves	1		Reeves	1	

120' Boom																							
70 ft Jib																							
Offset Angle (deg.)																							
10			30																				
Load Radius (ft)	Boom Angle (deg.)	Rated Load (lbs)	Load Radius (ft)	Boom Angle (deg.)	Rated Load (lbs)																		
50.0	79.6	15,700*																					
55.0	78.0	15,400*																					
60.0	76.4	15,100*																					
65.0	74.9	14,900*																					
70.0	73.3	14,700*	70.0	79.9	8,100*																		
75.0	71.7	14,400	75.0	78.2	8,100*																		
80.0	70.0	14,200	80.0	76.5	8,100*																		
85.0	68.4	14,000	85.0	74.8	8,100*																		
90.0	66.7	13,300	90.0	73.1	8,100*																		
95.0	65.0	12,500	95.0	71.3	7,800*																		
100.0	63.3	11,900	100.0	69.5	7,500*																		
105.0	61.5	11,400	105.0	67.7	7,300*																		
110.0	59.7	10,900	110.0	65.8	7,000*																		
115.0	57.9	10,400	115.0	63.9	6,900*																		
120.0	56.0	9,900	120.0	61.9	6,700*																		
125.0	54.1	9,500	125.0	59.9	6,500*																		
130.0	52.1	9,200	130.0	57.8	6,300*																		
135.0	50.1	8,800	135.0	55.7	6,200*																		
140.0	47.9	8,500	140.0	53.5	6,000*																		
145.0	45.7	8,200	145.0	51.1	5,900*																		
150.0	43.5	7,900																					
155.0	41.0	7,700																					
160.0	38.5	7,400																					
165.0	35.8	7,200																					
170.0	32.8	6,800																					
Reeves	1		Reeves	1																			

Note: Designed and rated to comply with ANSI Code B30.5
 Capacities based on factors other than machine stability such as structural competence are shown by asterisk * in the charts.
 Refer to notes on page 21.

CK1200G-2

SPECIFICATIONS

Fixed Jib Lift Capacity

Full Counterweight: 76,320 lbs Carbody Weight: 14,640

130' Boom																							
30 ft Jib						40 ft Jib						50 ft Jib						60 ft Jib					
Offset Angle (deg.)						Offset Angle (deg.)						Offset Angle (deg.)						Offset Angle (deg.)					
10			30			10			30			10			30			10			30		
Load Radius (ft)	Boom Angle (deg.)	Rated Load (lbs)	Load Radius (ft)	Boom Angle (deg.)	Rated Load (lbs)	Load Radius (ft)	Boom Angle (deg.)	Rated Load (lbs)	Load Radius (ft)	Boom Angle (deg.)	Rated Load (lbs)	Load Radius (ft)	Boom Angle (deg.)	Rated Load (lbs)	Load Radius (ft)	Boom Angle (deg.)	Rated Load (lbs)	Load Radius (ft)	Boom Angle (deg.)	Rated Load (lbs)	Load Radius (ft)	Boom Angle (deg.)	Rated Load (lbs)
38.0	79.5	24,000*				45.0	78.3	24,000*				45.0	79.5	20,000*				50.0	79.0	18,000*			
40.0	78.8	24,000*				50.0	76.6	24,000*				50.0	77.9	20,000*				55.0	77.5	18,000*			
45.0	76.9	24,000*				55.0	74.8	24,000*	55.0	79.0	15,400*	55.0	76.2	20,000*				60.0	75.9	18,000*			
50.0	75.1	24,000*	50.0	78.4	21,000*	60.0	73.0	24,000*	60.0	77.1	15,400*	60.0	74.6	20,000*	60.0	79.5	11,400*	65.0	74.3	18,000*			
55.0	73.2	24,000*	55.0	76.5	21,000*	65.0	71.3	24,000*	65.0	75.3	15,400*	65.0	72.9	20,000*	65.0	77.8	11,400*	70.0	72.7	18,000*	70.0	78.3	9,200*
60.0	71.3	24,000*	60.0	74.5	21,000*	70.0	69.4	24,000*	70.0	73.5	15,400*	70.0	71.2	20,000*	70.0	76.0	11,400*	75.0	71.1	18,000*	75.0	76.7	9,200*
65.0	69.4	24,000*	65.0	72.6	21,000*	75.0	67.6	23,100	75.0	71.6	15,400*	75.0	69.5	20,000*	75.0	74.3	11,400*	80.0	69.5	17,400	80.0	75.0	9,200*
70.0	67.5	24,000*	70.0	70.6	21,000*	80.0	65.8	21,100	80.0	69.7	15,400*	80.0	67.7	20,000*	80.0	72.5	11,400*	85.0	67.9	16,500	85.0	73.3	9,200*
75.0	65.5	22,800	75.0	68.6	21,000*	85.0	63.9	19,400	85.0	67.7	15,000*	85.0	66.0	19,300	85.0	70.7	11,400*	90.0	66.2	15,600	90.0	71.6	9,200*
80.0	63.5	20,800	80.0	66.5	21,000*	90.0	61.9	17,900	90.0	65.7	14,500*	90.0	64.2	18,100	90.0	68.8	11,400*	95.0	64.5	14,800	95.0	69.8	9,200*
85.0	61.5	19,100	85.0	64.4	19,600	95.0	60.0	16,400	95.0	63.7	14,100*	95.0	62.4	16,600	95.0	66.9	11,100*	100.0	62.7	14,100	100.0	68.0	9,000*
90.0	59.4	17,600	90.0	62.3	18,000	100.0	58.0	15,200	100.0	61.6	13,800*	100.0	60.5	15,400	100.0	65.0	10,800*	105.0	61.0	13,500	105.0	66.2	8,700*
95.0	57.2	16,200	95.0	60.1	16,600	105.0	55.9	14,100	105.0	59.5	13,400	105.0	58.6	14,300	105.0	63.0	10,500*	110.0	59.2	12,900	110.0	64.3	8,500*
100.0	55.0	15,000	100.0	57.8	15,300	110.0	53.8	13,200	110.0	57.3	13,100	110.0	56.7	13,400	110.0	61.0	10,300*	115.0	57.4	12,400	115.0	62.4	8,200*
105.0	52.8	13,900	105.0	55.5	14,200	115.0	51.6	12,200	115.0	55.1	12,600	115.0	54.7	12,400	115.0	59.0	10,000*	120.0	55.5	11,800	120.0	60.5	8,000*
110.0	50.4	12,900	110.0	53.1	13,200	120.0	49.4	11,400	120.0	52.7	11,800	120.0	52.6	11,600	115.0	56.8	9,800*	125.0	53.6	11,000	125.0	58.5	7,900*
115.0	48.0	12,000				125.0	47.0	10,700				125.0	50.5	10,900	120.0	54.6	9,600	130.0	51.6	10,300	130.0	56.4	7,700*
120.0	45.5	11,200				130.0	44.6	10,000				130.0	48.4	10,200	125.0	52.3	9,400	135.0	49.5	9,700	135.0	54.2	7,500*
125.0	42.8	10,500				135.0	42.0	9,400				135.0	46.1	9,600	130.0			140.0	47.4	9,100	140.0	52.0	7,400*
130.0	40.1	9,800				140.0	39.3	8,800				140.0	43.7	9,000				145.0	45.2	8,600			
135.0	37.1	9,200				145.0	36.4	8,300				145.0	41.2	8,400				150.0	42.9	8,100			
140.0	33.9	8,600				150.0	33.3	7,800				150.0	38.6	8,000				155.0	40.5	7,600			
												155.0	35.8	7,500				160.0	38.0	7,200			
												160.0	32.8	7,000				165.0	35.3	6,700			
																		170.0	32.3	6,400			
Reeves	1		Reeves	1		Reeves	1		Reeves	1		Reeves	1		Reeves	1		Reeves	1		Reeves	1	

130' Boom																							
70 ft Jib																							
Offset Angle (deg.)																							
10			30																				
Load Radius (ft)	Boom Angle (deg.)	Rated Load (lbs)	Load Radius (ft)	Boom Angle (deg.)	Rated Load (lbs)																		
55.0	78.6	15,500*																					
60.0	77.1	15,200*																					
65.0	75.6	15,000*																					
70.0	74.1	14,700*																					
75.0	72.6	14,500*	75.0	78.9	8,100*																		
80.0	71.1	14,300	80.0	77.3	8,100*																		
85.0	69.5	14,100	85.0	75.7	8,100*																		
90.0	68.0	13,800	90.0	74.0	8,100*																		
95.0	66.4	13,100	95.0	72.4	7,900*																		
100.0	64.7	12,400	100.0	70.7	7,700*																		
105.0	63.1	11,900	105.0	69.0	7,400*																		
110.0	61.4	11,300	110.0	67.3	7,200*																		
115.0	59.7	10,800	115.0	65.5	7,000*																		
120.0	58.0	10,400	120.0	63.7	6,800*																		
125.0	56.2	10,000	125.0	61.8	6,600*																		
130.0	54.4	9,600	130.0	59.9	6,500*																		
135.0	52.5	9,200	135.0	58.0	6,300*																		
140.0	50.6	8,900	140.0	56.0	6,200*																		
145.0	48.6	8,600	145.0	53.9	6,000																		
150.0	46.6	8,200	150.0	51.7	5,900																		
155.0	44.4	7,700																					
160.0	42.2	7,200																					
165.0	39.9	6,800																					
170.0	37.4	6,500																					
175.0	34.7	6,100																					
180.0	31.9	5,700																					
Reeves	1		Reeves	1																			

Note: Designed and rated to comply with ANSI Code B30.5

Capacities based on factors other than machine stability such as structural competence are shown by asterisk * in the charts.

Refer to notes on page 21.

CK1200G-2

SPECIFICATIONS

Fixed Jib Lift Capacity

Full Counterweight: 76,320 lbs Carbody Weight: 14,640

140' Boom																							
30 ft Jib						40 ft Jib						50 ft Jib						60 ft Jib					
Offset Angle (deg.)						Offset Angle (deg.)						Offset Angle (deg.)						Offset Angle (deg.)					
10			30			10			30			10			30			10			30		
Load Radius (ft)	Boom Angle (deg.)	Rated Load (lbs)	Load Radius (ft)	Boom Angle (deg.)	Rated Load (lbs)	Load Radius (ft)	Boom Angle (deg.)	Rated Load (lbs)	Load Radius (ft)	Boom Angle (deg.)	Rated Load (lbs)	Load Radius (ft)	Boom Angle (deg.)	Rated Load (lbs)	Load Radius (ft)	Boom Angle (deg.)	Rated Load (lbs)	Load Radius (ft)	Boom Angle (deg.)	Rated Load (lbs)	Load Radius (ft)	Boom Angle (deg.)	Rated Load (lbs)
40.0	79.4	24,000*				45.0	79.0	24,000*				50.0	78.5	20,000*				50.0	79.6	18,000*			
45.0	77.7	24,000*				50.0	77.3	24,000*				55.0	77.0	20,000*				55.0	78.1	18,000*			
50.0	76.0	24,000*				55.0	75.7	24,000*	55.0	79.6	15,400*	60.0	75.4	20,000*				60.0	76.6	18,000*			
55.0	74.2	24,000*	50.0	79.1	21,000*	60.0	74.0	24,000*	60.0	77.9	15,400*	65.0	73.8	20,000*	65.0	78.5	11,400*	65.0	75.2	18,000*			
60.0	72.5	24,000*	55.0	77.3	21,000*	65.0	72.3	24,000*	65.0	76.2	15,400*	70.0	72.2	20,000*	70.0	76.8	11,400*	70.0	73.6	18,000*	70.0	79.0	9,200*
65.0	70.7	24,000*	60.0	75.5	21,000*	70.0	70.6	24,000*	70.0	74.5	15,400*	75.0	70.6	20,000*	75.0	75.2	11,400*	75.0	72.1	18,000*	75.0	77.4	9,200*
70.0	68.9	24,000*	65.0	73.7	21,000*	75.0	68.9	22,900	75.0	72.7	15,400*	80.0	69.0	20,000*	80.0	73.5	11,400*	80.0	70.6	18,000*	80.0	75.8	9,200*
75.0	67.0	22,500	70.0	71.8	21,000*	80.0	67.2	20,800	80.0	70.9	15,400*	85.0	67.3	19,400	85.0	71.8	11,400*	85.0	69.0	17,100	85.0	74.2	9,200*
80.0	65.2	20,500	75.0	70.0	21,000*	85.0	65.4	19,100	85.0	69.1	15,300*	90.0	65.7	17,800	90.0	70.1	11,400*	90.0	67.5	16,300	90.0	72.6	9,200*
85.0	63.3	18,800	80.0	68.1	21,000*	90.0	63.6	17,600	90.0	67.3	14,800*	95.0	64.0	16,400	95.0	68.3	11,300*	95.0	65.9	15,400	95.0	71.0	9,200*
90.0	61.4	17,300	85.0	66.1	19,400	95.0	61.8	16,100	95.0	65.4	14,400*	100.0	62.2	15,200	100.0	66.5	11,000*	100.0	64.3	14,700	100.0	69.3	9,100*
95.0	59.4	15,900	90.0	64.2	17,800	100.0	60.0	14,900	100.0	63.5	14,100*	105.0	60.5	14,100	105.0	64.7	10,800*	105.0	62.6	14,100	105.0	67.6	8,900*
100.0	57.4	14,700	100.0	60.1	15,100	105.0	58.1	13,900	105.0	61.5	13,700	110.0	58.7	13,100	110.0	62.9	10,500*	110.0	60.9	13,200	110.0	65.9	8,800*
105.0	55.3	13,600	105.0	58.0	14,000	110.0	56.1	12,900	110.0	59.5	13,400	115.0	56.9	12,100	115.0	61.0	10,200*	115.0	59.2	12,300	115.0	64.1	8,400*
110.0	53.2	12,600	110.0	55.8	13,000	115.0	54.2	11,900	115.0	57.5	12,400	120.0	55.0	11,300	120.0	59.0	10,000*	120.0	57.5	11,500	120.0	62.3	8,200*
115.0	51.0	11,700	115.0	53.6	12,000	120.0	52.1	11,100	120.0	55.4	11,500	125.0	53.1	10,600	125.0	57.0	9,800	125.0	55.7	10,700	125.0	60.4	8,000*
120.0	48.8	10,900	120.0	51.2	11,200	125.0	50.0	10,400	125.0	53.2	10,800	130.0	51.1	9,900	130.0	55.0	9,600	130.0	53.9	10,000	130.0	58.5	7,800*
125.0	46.5	10,200				130.0	47.8	9,700				135.0	49.0	9,300	135.0	52.8	9,500	135.0	52.0	9,400	135.0	56.6	7,700*
130.0	44.0	9,500				135.0	45.6	9,100				140.0	46.9	8,700				140.0	50.1	8,800	140.0	54.6	7,500*
135.0	41.5	8,900				140.0	43.2	8,500				145.0	44.7	8,200				145.0	48.1	8,300	145.0	52.5	7,400
140.0	38.8	8,300				145.0	40.7	8,000				150.0	42.4	7,600				150.0	46.1	7,800			
145.0	35.9	7,800				150.0	38.1	7,500				155.0	40.0	7,200				155.0	44.0	7,300			
150.0	32.8	7,300				155.0	35.3	7,000				160.0	37.5	6,700				160.0	41.7	6,900			
						160.0	32.3	6,600				165.0	34.8	6,300				165.0	39.4	6,500			
												170.0	31.8	6,000				170.0	36.9	6,100			
																		175.0	34.3	5,700			
																		180.0	31.4	5,400			
Reeves	1		Reeves	1		Reeves	1		Reeves	1		Reeves	1		Reeves	1		Reeves	1		Reeves	1	

140' Boom																							
70 ft Jib																							
Offset Angle (deg.)																							
10			30																				
Load Radius (ft)	Boom Angle (deg.)	Rated Load (lbs)	Load Radius (ft)	Boom Angle (deg.)	Rated Load (lbs)																		
55.0	79.2	15,500*																					
60.0	77.8	15,300*																					
65.0	76.4	15,100*																					
70.0	74.9	14,900*																					
75.0	73.5	14,600	75.0	79.4	8,100*																		
80.0	72.0	14,400	80.0	77.9	8,100*																		
85.0	70.6	14,200	85.0	76.4	8,100*																		
90.0	69.1	14,100	90.0	74.9	8,100*																		
95.0	67.6	13,600	95.0	73.3	8,000*																		
100.0	66.1	12,900	100.0	71.8	7,800*																		
105.0	64.5	12,300	105.0	70.2	7,600*																		
110.0	62.9	11,800	110.0	68.5	7,300*																		
115.0	61.4	11,300	115.0	66.9	7,100*																		
120.0	59.7	10,800	120.0	65.2	6,900*																		
125.0	58.1	10,400	125.0	63.5	6,800*																		
130.0	56.4	10,000	130.0	61.7	6,600*																		
135.0	54.7	9,500	135.0	59.9	6,500*																		
140.0	52.9	8,900	140.0	58.1	6,300*																		
145.0	51.1	8,400	145.0	56.2	6,200																		
150.0	49.2	7,900	150.0	54.2	6,100																		
155.0	47.3	7,400	155.0	52.2	5,900																		
160.0	45.3	6,900																					
165.0	43.2	6,500																					
170.0	41.1	6,100																					
175.0	38.8	5,800																					
180.0	36.4	5,400																					
185.0	33.8	5,100																					
190.0	31.0	4,800																					
Reeves	1		Reeves	1																			

Note: Designed and rated to comply with ANSI Code B30.5
 Capacities based on factors other than machine stability such as structural competence are shown by asterisk * in the charts.
 Refer to notes on page 21.

CK1200G-2

SPECIFICATIONS

Fixed Jib Lift Capacity

Full Counterweight: 76,320 lbs Carbody Weight: 14,640

150' Boom																													
30 ft Jib						40 ft Jib									50 ft Jib									60 ft Jib					
Offset Angle (deg.)						Offset Angle (deg.)									Offset Angle (deg.)									Offset Angle (deg.)					
10			30			10			30			10			30			10			30								
Load Radius (ft)	Boom Angle (deg.)	Rated Load (lbs)	Load Radius (ft)	Boom Angle (deg.)	Rated Load (lbs)	Load Radius (ft)	Boom Angle (deg.)	Rated Load (lbs)	Load Radius (ft)	Boom Angle (deg.)	Rated Load (lbs)	Load Radius (ft)	Boom Angle (deg.)	Rated Load (lbs)	Load Radius (ft)	Boom Angle (deg.)	Rated Load (lbs)	Load Radius (ft)	Boom Angle (deg.)	Rated Load (lbs)	Load Radius (ft)	Boom Angle (deg.)	Rated Load (lbs)						
45.0	78.4	24,000*				45.0	79.6	24,000*				50.0	79.1	20,000*				55.0	78.7	18,000*									
50.0	76.8	24,000*				50.0	78.0	24,000*				55.0	77.6	20,000*				60.0	77.3	18,000*									
55.0	75.1	24,000*				55.0	76.5	24,000*				60.0	76.2	20,000*				65.0	75.9	18,000*									
60.0	73.5	24,000*	50.0	79.7	21,000*	60.0	74.9	24,000*	60.0	78.6	15,400*	65.0	74.7	20,000*	65.0	79.1	11,400*	70.0	74.5	18,000*	70.0	79.5	9,200*						
65.0	71.8	240,00*	60.0	76.3	21,000*	65.0	73.3	24,000*	65.0	77.0	15,400*	70.0	73.2	20,000*	70.0	77.5	11,400*	75.0	73.0	18,000*	75.0	78.1	9,200*						
70.0	70.1	24,000*	65.0	74.6	21,000*	70.0	71.7	24,000*	70.0	75.3	15,400*	75.0	71.6	20,000	75.0	76.0	11,400*	80.0	71.6	18,000*	80.0	76.6	9,200*						
75.0	68.4	22,200	70.0	72.9	21,000*	75.0	70.1	22,500	75.0	73.7	15,400*	80.0	70.1	20,000	80.0	74.4	11,400*	85.0	70.1	17,800	85.0	75.1	9,200*						
80.0	66.7	20,200	75.0	71.2	21,000*	80.0	68.5	20,500	80.0	72.0	15,400*	85.0	68.5	19,000	85.0	72.8	11,400*	90.0	68.6	16,900	90.0	73.5	9,200*						
85.0	64.9	18,400	80.0	69.4	20,800	85.0	66.8	18,800	85.0	70.3	15,400*	90.0	67.0	17,500	90.0	71.2	11,400*	95.0	67.1	160,00	95.0	72.0	9,200*						
90.0	63.1	16,900	85.0	67.6	19,000	90.0	65.2	17,200	90.0	68.6	15,100*	95.0	65.4	16,000	95.0	69.5	11,400*	100.0	65.6	15,000	100.0	70.4	9,200*						
95.0	61.3	15,500	90.0	65.8	17,500	95.0	63.5	15,800	95.0	66.9	14,700*	100.0	63.8	14,800	100.0	67.9	11,300*	105.0	64.0	13,900	105.0	68.8	9,000*						
100.0	59.4	14,300	95.0	63.9	16,000	100.0	61.7	14,600	100.0	65.1	14,300	105.0	62.1	13,700	105.0	66.2	11,000*	110.0	62.5	12,900	110.0	67.2	8,800*						
105.0	57.5	13,200	100.0	62.0	14,700	105.0	60.0	13,500	105.0	63.3	14,000	110.0	60.5	12,700	110.0	64.5	10,700*	115.0	60.9	11,900	115.0	65.6	8,600*						
110.0	55.6	12,300	105.0	60.1	13,600	110.0	58.2	12,500	110.0	61.4	13,000	115.0	58.8	11,800	115.0	62.7	10,400*	120.0	59.3	11,100	120.0	63.9	8,400*						
115.0	53.6	11,300	110.0	58.1	12,600	115.0	56.4	11,600	115.0	59.6	12,100	120.0	57.0	11,000	120.0	60.9	10,200*	125.0	57.6	10,400	125.0	62.2	8,200*						
120.0	51.6	10,500	115.0	56.1	11,700	120.0	54.5	10,800	120.0	57.6	11,200	125.0	55.2	10,200	125.0	59.1	10,000	130.0	55.9	9,700	130.0	60.4	8,000*						
125.0	49.5	9,800	120.0	54.0	10,800	125.0	52.6	10,000	125.0	55.6	10,400	130.0	53.4	9,500	130.0	57.2	9,800	135.0	54.2	9,100	135.0	58.6	7,800*						
130.0	47.3	9,100	125.0	51.8	10,100	130.0	50.6	9,400	130.0	53.6	9,700	135.0	51.6	8,900	135.0	55.3	9,400	140.0	52.5	8,400	140.0	56.8	7,700						
135.0	45.0	8,500				135.0	48.5	8,700				140.0	49.7	8,300	140.0	53.3	8,700	145.0	50.7	7,900	145.0	54.9	7,500						
140.0	42.7	7,900				140.0	46.4	8,100				145.0	47.7	7,800				150.0	48.8	7,400	150.0	52.9	7,400						
145.0	40.2	7,400				145.0	44.2	7,600				150.0	45.6	7,300				155.0	46.9	6,900									
150.0	37.6	6,900				150.0	42.0	7,100				155.0	43.5	6,800				160.0	44.9	6,500									
155.0	34.8	6,500				155.0	39.5	6,700				160.0	41.3	6,400				165.0	42.8	6,100									
160.0	31.8	6,000				160.0	37.0	6,200				165.0	38.9	6,000				170.0	40.6	5,700									
						165.0	34.3	5,800				170.0	36.4	5,500				175.0	38.3	5,300									
												175.0	33.8	5,100				180.0	35.9	4,900									
																		185.0	33.3	4,500									
Reeves	1		Reeves	1		Reeves	1		Reeves	1		Reeves	1		Reeves	1		Reeves	1		Reeves	1							

150' Boom																													
70 ft Jib																													
Offset Angle (deg.)																													
10			30																										
Load Radius (ft)	Boom Angle (deg.)	Rated Load (lbs)	Load Radius (ft)	Boom Angle (deg.)	Rated Load (lbs)																								
55.0	79.7	15,600*																											
60.0	78.3	15,400*																											
65.0	77.0	15,200*																											
70.0	75.6	14,900*																											
75.0	74.3	14,700	75.0	80.0	8,100*																								
80.0	72.9	14,500	80.0	78.5	8,100*																								
85.0	71.5	14,300	85.0	77.1	8,100*																								
90.0	70.1	14,200	90.0	75.7	8,100*																								
95.0	68.7	14,000	95.0	74.2	8,100*																								
100.0	67.2	13,400	100.0	72.7	7,900*																								
105.0	65.8	12,800	105.0	71.2	7,700*																								
110.0	64.3	12,300	110.0	69.7	7,500*																								
115.0	62.8	11,700	115.0	68.1	7,300*																								
120.0	61.3	11,200	120.0	66.6	7,100*																								
125.0	59.8	10,500	125.0	65.0	6,900*																								
130.0	58.2	98,00	130.0	63.3	6,700*																								
135.0	56.6	9,200	135.0	61.6	6,600*																								
140.0	54.9	8,500	140.0	59.9	6,400																								
145.0	53.3	8,000	145.0	58.2	6,300																								
150.0	51.6	7,500	150.0	56.4	6,200																								
155.0	49.8	7,000	155.0	54.5	6,100																								
160.0	48.0	6,600	160.0	52.6	5,900																								
165.0	46.1	6,200	165.0	50.6	5,800																								
170.0	44.2	5,800																											
175.0	42.1	5,400																											
180.0	40.0	5,000																											
185.0	37.8	4,600																											
190.0	35.4	4,200																											
195.0	32.9	3,900																											
Reeves	1		Reeves	1																									

Note: Designed and rated to comply with ANSI Code B30.5

Capacities based on factors other than machine stability such as structural competence are shown by asterisk * in the charts.

Refer to notes on page 21.

Full Counterweight: 76,320 lbs Carbody Weight: 14,640

160' Boom																							
30 ft Jib						40 ft Jib						50 ft Jib						60 ft Jib					
Offset Angle (deg.)						Offset Angle (deg.)						Offset Angle (deg.)						Offset Angle (deg.)					
10			30			10			30			10			30			10			30		
Load Radius (ft)	Boom Angle (deg.)	Rated Load (lbs)	Load Radius (ft)	Boom Angle (deg.)	Rated Load (lbs)	Load Radius (ft)	Boom Angle (deg.)	Rated Load (lbs)	Load Radius (ft)	Boom Angle (deg.)	Rated Load (lbs)	Load Radius (ft)	Boom Angle (deg.)	Rated Load (lbs)	Load Radius (ft)	Boom Angle (deg.)	Rated Load (lbs)	Load Radius (ft)	Boom Angle (deg.)	Rated Load (lbs)	Load Radius (ft)	Boom Angle (deg.)	Rated Load (lbs)
45.0	79.0	24,000*				50.0	78.6	24,000*				50.0	79.6	20,000*				55.0	79.2	18,000*			
50.0	77.5	24,000*				55.0	77.1	24,000*				55.0	78.2	20,000*				60.0	77.9	18,000*			
55.0	75.9	24,000*	55.0	78.7	21,000*	60.0	75.7	24,000*	60.0	79.2	15,400*	60.0	76.8	20,000*				65.0	76.5	18,000*			
60.0	74.4	24,000*	60.0	77.1	21,000*	65.0	74.2	24,000*	65.0	77.7	15,400*	65.0	75.4	20,000*	65.0	79.6	11,400*	70.0	75.2	18,000*			
65.0	72.8	240,00*	65.0	75.5	21,000*	70.0	72.7	24,000*	70.0	76.1	15,400*	70.0	74.0	20,000*	70.0	78.2	11,400*	75.0	73.8	18,000*	75.0	78.6	9,200*
70.0	71.2	24,000*	70.0	73.9	21,000*	75.0	71.1	22,400	75.0	74.6	15,400*	75.0	72.5	20,000*	75.0	76.7	11,400*	80.0	72.4	18,000*	80.0	77.2	9,200*
75.0	69.6	22,100	75.0	72.2	21,000*	80.0	69.6	20,400	80.0	73.0	15,400*	80.0	71.1	20,000*	80.0	75.2	11,400*	85.0	71.1	18,000*	85.0	75.8	9,200*
80.0	68.0	20,100	80.0	70.6	20,800	85.0	68.1	18,700	85.0	71.4	15,400*	85.0	69.6	18,900	85.0	73.7	11,400*	90.0	69.6	17,500	90.0	74.3	9,200*
85.0	66.3	18,300	85.0	68.9	19,000	90.0	66.5	17,100	90.0	69.8	15,400*	90.0	68.1	17,400	90.0	72.2	11,400*	95.0	68.2	16,100	95.0	72.9	9,200*
90.0	64.6	16,800	90.0	67.2	17,400	95.0	64.9	15,700	95.0	68.2	15,000*	95.0	66.6	15,900	95.0	70.6	11,400*	100.0	66.8	14,900	100.0	71.4	9,200*
95.0	62.9	15,400	95.0	65.5	15,900	100.0	63.3	14,500	100.0	66.5	14,600	100.0	65.1	14,700	100.0	69.1	11,400*	105.0	65.3	13,800	105.0	69.9	9,200*
100.0	61.2	14,200	100.0	63.7	14,700	105.0	61.6	13,400	105.0	64.8	14,000	105.0	63.6	13,600	105.0	67.5	11,200*	110.0	63.9	12,800	110.0	68.4	9,000*
105.0	59.5	13,100	105.0	61.9	13,600	110.0	60.0	12,400	110.0	63.1	12,900	110.0	62.0	12,600	110.0	65.9	10,900*	115.0	62.4	11,800	115.0	66.8	8,700*
110.0	57.7	12,100	110.0	60.1	12,500	115.0	58.3	11,500	115.0	61.4	11,900	115.0	60.4	11,700	115.0	64.2	10,600*	120.0	60.9	11,000	120.0	65.3	8,500*
115.0	55.8	11,200	115.0	58.2	11,600	120.0	56.5	10,600	120.0	59.6	11,100	120.0	58.8	10,800	120.0	62.6	10,400*	125.0	59.3	10,200	125.0	63.7	8,300*
120.0	54.0	10,400	120.0	56.3	10,700	125.0	54.8	9,900	125.0	57.8	10,300	125.0	57.2	10,100	125.0	60.9	10,200	130.0	57.7	9,600	130.0	62.1	8,000*
125.0	52.1	9,700	125.0	54.3	10,000	130.0	53.0	9,200	130.0	55.9	9,600	130.0	55.5	9,400	130.0	59.1	9,900	135.0	56.1	8,900	135.0	60.4	7,800*
130.0	50.1	9,000	130.0	52.3	9,300	135.0	51.1	8,600	135.0	54.0	9,000	135.0	53.8	8,800	135.0	57.3	9,300	140.0	54.5	8,300	140.0	58.7	7,800
135.0	48.0	8,400				140.0	49.2	8,000	140.0	52.0	8,300	140.0	52.0	8,200	140.0	55.5	8,600	145.0	52.8	7,800	145.0	57.0	7,700
140.0	45.9	7,800				145.0	47.2	7,500				145.0	50.2	7,600	145.0	53.6	8,000	150.0	51.1	7,300	150.0	55.2	7,500
145.0	43.7	7,300				150.0	45.2	7,000				150.0	48.3	7,100	150.0	51.7	7,500	155.0	49.4	6,800	155.0	53.3	7,200
150.0	41.5	6,800				155.0	43.0	6,500				155.0	46.4	6,700				160.0	47.5	6,300	160.0	51.4	6,700
155.0	39.1	6,300				160.0	40.8	6,100				160.0	44.4	6,200				165.0	45.7	5,900			
160.0	36.5	5,800				165.0	38.5	5,600				165.0	42.3	5,800				170.0	43.7	5,500			
165.0	33.8	5,400				170.0	36.0	5,100				170.0	40.2	5,300				175.0	41.7	5,100			
170.0	30.9	4,900				175.0	33.3	4,700				175.0	37.9	4,900				180.0	39.6	4,600			
												180.0	35.5	4,500				185.0	37.4	4,300			
												185.0	32.9	4,100				190.0	35.0	3,900			
																		195.0	32.5	3,600			
Reeves	1		Reeves	1		Reeves	1		Reeves	1		Reeves	1		Reeves	1		Reeves	1		Reeves	1	
160' Boom																							
70 ft Jib																							
Offset Angle (deg.)																							
10			30																				
Load Radius (ft)	Boom Angle (deg.)	Rated Load (lbs)	Load Radius (ft)	Boom Angle (deg.)	Rated Load (lbs)																		
60.0	78.9	15,400*																					
65.0	77.6	15,200*																					
70.0	76.3	15,000*																					
75.0	75.0	14,800																					
80.0	73.7	14,600	80.0	79.1	8,100*																		
85.0	72.3	14,400	85.0	77.7	8,100*																		
90.0	71.0	14,300	90.0	76.3	8,100*																		
95.0	69.7	14,100	95.0	75.0	8,100*																		
100.0	68.3	13,900	100.0	73.5	8,000*																		
105.0	66.9	13,300	105.0	72.1	7,800*																		
110.0	65.5	12,700	110.0	70.7	7,600*																		
115.0	64.1	11,900	115.0	69.2	7,400*																		
120.0	62.7	11,100	120.0	67.7	7,200*																		
125.0	61.2	10,400	125.0	66.2	7,000*																		
130.0	59.8	9,700	130.0	64.7	6,900*																		
135.0	58.3	9,000	135.0	63.2	6,700*																		
140.0	56.7	8,400	140.0	61.6	6,500																		
145.0	55.2	7,900	145.0	59.9	6,400																		
150.0	53.6	7,400	150.0	58.3	6,300																		
155.0	52.0	6,900	155.0	56.6	6,200																		
160.0	50.3	6,400	160.0	54.8	6,100																		
165.0	48.6	6,000	165.0	53.0	5,900																		
170.0	46.8	5,600	170.0	51.2	5,900																		
175.0	45.0	5,200																					
180.0	43.1	4,800																					
185.0	41.1	4,400																					
190.0	39.0	4,000																					
195.0	36.9	3,700																					
200.0	34.6	3,300																					
Reeves	1		Reeves	1																			

CK1200G-2

SPECIFICATIONS

Fixed Jib Lift Capacity

Full Counterweight: 76,320 lbs Carbody Weight: 14,640

170' Boom																							
30 ft Jib						40 ft Jib						50 ft Jib						60 ft Jib					
Offset Angle (deg.)						Offset Angle (deg.)						Offset Angle (deg.)						Offset Angle (deg.)					
10			30			10			30			10			30			10			30		
Load Radius (ft)	Boom Angle (deg.)	Rated Load (lbs)	Load Radius (ft)	Boom Angle (deg.)	Rated Load (lbs)	Load Radius (ft)	Boom Angle (deg.)	Rated Load (lbs)	Load Radius (ft)	Boom Angle (deg.)	Rated Load (lbs)	Load Radius (ft)	Boom Angle (deg.)	Rated Load (lbs)	Load Radius (ft)	Boom Angle (deg.)	Rated Load (lbs)	Load Radius (ft)	Boom Angle (deg.)	Rated Load (lbs)	Load Radius (ft)	Boom Angle (deg.)	Rated Load (lbs)
45.0	79.6	24,000*				50.0	79.2	24,000*				55.0	78.8	20,000*				55.0	79.7	18,000*			
50.0	78.1	24,000*				55.0	77.8	24,000*				60.0	77.4	20,000*				60.0	78.4	18,000*			
55.0	76.7	24,000*	55.0	79.3	21,000*	60.0	76.4	24,000*	60.0	79.7	15,400*	65.0	76.1	20,000*				65.0	77.1	18,000*			
60.0	75.2	24,000*	60.0	77.8	21,000*	65.0	74.9	24,000*	65.0	78.3	15,400*	70.0	74.7	20,000*	70.0	78.7	11,400*	70.0	75.9	18,000*			
65.0	73.7	240,000*	65.0	76.3	21,000*	70.0	73.5	24,000*	70.0	76.8	15,400*	75.0	73.4	20,000*	75.0	77.3	11,400*	75.0	74.5	18,000*	75.0	79.2	9,200*
70.0	72.2	24,000*	70.0	74.7	21,000*	75.0	72.1	22,100	75.0	75.4	15,400*	80.0	72.0	20,000*	80.0	75.9	11,400*	80.0	73.2	18,000*	80.0	77.8	9,200*
75.0	70.7	21,700	75.0	73.2	21,000*	80.0	70.6	20,100	80.0	73.9	15,400*	85.0	70.6	18,600	85.0	74.5	11,400*	85.0	71.9	18,000*	85.0	76.5	9,200*
80.0	69.1	19,700	80.0	71.6	20,500	85.0	69.2	18,300	85.0	72.4	15,400*	90.0	69.2	17,000	90.0	73.1	11,400*	90.0	70.6	17,200	90.0	75.1	9,200*
85.0	67.6	18,000	85.0	70.0	18,700	90.0	67.7	16,800	90.0	70.9	15,400*	95.0	67.8	15,600	95.0	71.6	11,400*	95.0	69.2	15,800	95.0	73.7	9,200*
90.0	66.0	16,500	90.0	68.4	17,100	95.0	66.2	15,300	95.0	69.3	15,200*	100.0	66.3	14,400	100.0	70.1	11,400*	100.0	67.9	14,500	100.0	72.3	9,200*
95.0	64.4	15,000	95.0	66.8	15,600	100.0	64.7	14,100	100.0	67.8	14,800	105.0	64.9	13,300	105.0	68.6	11,300*	105.0	66.5	13,400	105.0	70.9	9,200*
100.0	62.8	13,800	100.0	65.2	14,300	105.0	63.1	13,000	105.0	66.2	13,700	110.0	63.4	12,300	110.0	67.1	11,100*	110.0	65.1	12,500	110.0	69.5	9,100*
105.0	61.2	12,800	105.0	63.5	13,200	110.0	61.6	12,100	110.0	64.6	12,600	115.0	61.9	11,300	115.0	65.6	10,800*	115.0	63.7	11,500	115.0	68.0	8,900*
110.0	59.5	11,800	110.0	61.8	12,200	115.0	60.0	11,100	115.0	63.0	11,700	120.0	60.4	10,500	120.0	64.0	10,600	120.0	62.3	10,700	120.0	66.5	8,700*
115.0	57.8	10,900	115.0	60.1	11,200	120.0	58.4	10,300	120.0	61.3	10,800	125.0	58.9	9,800	125.0	62.4	10,400	125.0	60.8	9,900	125.0	65.0	8,500*
120.0	56.1	10,000	120.0	58.3	10,400	125.0	56.7	9,600	125.0	59.6	10,000	130.0	57.3	9,100	130.0	60.8	9,600	130.0	59.3	9,200	130.0	63.5	8,100*
125.0	54.3	9,300	125.0	56.5	9,700	130.0	55.0	8,900	130.0	57.9	9,300	135.0	55.7	8,400	135.0	59.2	9,000	135.0	57.8	8,600	135.0	62.0	8,100*
130.0	52.5	8,700	130.0	54.6	8,900	135.0	53.3	8,300	135.0	56.1	8,700	140.0	54.1	7,800	140.0	57.5	8,300	140.0	56.3	8,000	140.0	60.4	8,000
135.0	50.6	8,000	135.0	52.7	8,300	140.0	51.6	7,600	140.0	54.3	8,000	145.0	52.4	7,300	145.0	55.7	7,700	145.0	54.8	7,400	145.0	58.8	7,800
140.0	48.7	7,400				145.0	49.7	7,100	145.0	52.4	7,400	150.0	50.7	6,800	150.0	54.0	7,200	150.0	53.2	6,900	150.0	57.1	7,400
145.0	46.7	6,900				150.0	47.9	6,600				155.0	48.9	6,300	155.0	52.1	6,700	155.0	51.5	6,500	155.0	55.4	6,900
150.0	44.7	6,400				155.0	46.0	6,100				160.0	47.1	5,800				160.0	49.9	5,900	160.0	53.7	6,400
155.0	42.6	5,800				160.0	44.0	5,500				165.0	45.2	5,300				165.0	48.2	5,500	165.0	51.9	6,000
160.0	40.3	5,300				165.0	41.9	5,100				170.0	43.3	4,800				170.0	46.4	5,000			
165.0	38.0	4,800				170.0	39.7	4,600				175.0	41.3	4,400				175.0	44.6	4,600			
170.0	35.5	4,400				175.0	37.5	4,200				180.0	39.2	4,000				180.0	42.7	4,200			
175.0	32.9	4,000				180.0	35.1	3,800				185.0	36.9	3,600				185.0	40.7	3,800			
						185.0	32.5	3,400				190.0	34.6	3,300				190.0	38.6	3,400			
Reeves	1		Reeves	1		Reeves	1		Reeves	1		Reeves	1		Reeves	1		Reeves	1		Reeves	1	

170' Boom																							
70 ft Jib																							
Offset Angle (deg.)																							
10			30																				
Load Radius (ft)	Boom Angle (deg.)	Rated Load (lbs)	Load Radius (ft)	Boom Angle (deg.)	Rated Load (lbs)																		
60.0	79.3	15,500*																					
65.0	78.1	15,300*																					
70.0	76.9	15,100*																					
75.0	75.6	14,900	75.0	80.9	8,100*																		
80.0	74.4	14,700	80.0	79.6	8,100*																		
85.0	73.1	14,500	85.0	78.3	8,100*																		
90.0	71.8	14,300	90.0	77.0	8,100*																		
95.0	70.6	14,200	95.0	75.6	8,100*																		
100.0	69.3	14,000	100.0	74.3	8,100*																		
105.0	68.0	13,600	105.0	73.0	7,900*																		
110.0	66.6	12,600	110.0	71.6	7,700*																		
115.0	65.3	11,600	115.0	70.2	7,500*																		
120.0	63.9	10,800	120.0	68.8	7,300*																		
125.0	62.6	10,000	125.0	67.4	7,100*																		
130.0	61.2	9,300	130.0	66.0	7,000*																		
135.0	59.8	8,700	135.0	64.5	6,800*																		
140.0	58.3	8,100	140.0	63.0	6,700																		
145.0	56.9	7,500	145.0	61.5	6,500																		
150.0	55.4	7,000	150.0	59.9	6,400																		
155.0	53.9	6,600	155.0	58.4	6,300																		
160.0	52.3	6,100	160.0	56.7	6,100																		
165.0	50.7	5,600	165.0	55.1	6,100																		
170.0	49.1	5,100	170.0	53.4	5,800																		
175.0	47.4	4,700	175.0	51.6	5,300																		
180.0	45.7	4,300																					
185.0	43.9	3,900																					
190.0	42.1	3,500																					
Reeves	1		Reeves	1																			

Note: Designed and rated to comply with ANSI Code B30.5

Capacities based on factors other than machine stability such as structural competence are shown by asterisk * in the charts.

Refer to notes on page 21.

CK1200G-2

SPECIFICATIONS

Fixed Jib Lift Capacity

Full Counterweight: 76,320 lbs Carbody Weight: 14,640

180' Boom																							
30 ft Jib						40 ft Jib						50 ft Jib						60 ft Jib					
Offset Angle (deg.)						Offset Angle (deg.)						Offset Angle (deg.)						Offset Angle (deg.)					
10			30			10			30			10			30			10			30		
Load Radius (ft)	Boom Angle (deg.)	Rated Load (lbs)	Load Radius (ft)	Boom Angle (deg.)	Rated Load (lbs)	Load Radius (ft)	Boom Angle (deg.)	Rated Load (lbs)	Load Radius (ft)	Boom Angle (deg.)	Rated Load (lbs)	Load Radius (ft)	Boom Angle (deg.)	Rated Load (lbs)	Load Radius (ft)	Boom Angle (deg.)	Rated Load (lbs)	Load Radius (ft)	Boom Angle (deg.)	Rated Load (lbs)	Load Radius (ft)	Boom Angle (deg.)	Rated Load (lbs)
50.0	78.7	24,000*				50.0	79.7	24,000*				55.0	79.3	20,000*				60.0	78.9	18,000*			
55.0	77.3	24,000*	55.0	79.8	21,000*	55.0	78.3	24,000*				60.0	78.0	20,000*				65.0	77.7	18,000*			
60.0	75.9	24,000*	60.0	78.4	21,000*	60.0	77.0	24,000*				65.0	76.7	20,000*				70.0	76.5	18,000*			
65.0	74.5	23,900	65.0	77.0	21,000*	65.0	75.7	24,000*	65.0	78.8	15,400*	70.0	75.4	20,000*	70.0	79.3	11,400*	75.0	75.2	18,000*	75.0	79.7	9,200*
70.0	73.1	21,400	70.0	75.5	21,000*	70.0	74.3	24,000*	70.0	77.5	15,400*	75.0	74.1	20,000*	75.0	77.9	11,400*	80.0	74.0	18,000*	80.0	78.4	9,200*
75.0	71.6	19,500	75.0	74.0	21,000*	75.0	72.9	21,800	75.0	76.1	15,400*	80.0	72.8	20,000*	80.0	76.6	11,400*	85.0	72.7	18,000*	85.0	77.1	9,200*
80.0	70.2	17,700	80.0	72.6	20,200	80.0	71.6	19,800	80.0	74.7	15,400*	85.0	71.5	18,300	85.0	75.2	11,400*	90.0	71.4	17,000	90.0	75.8	9,200*
85.0	68.7	16,200	85.0	71.1	18,400	85.0	70.2	18,000	85.0	73.2	15,400*	90.0	70.2	16,800	90.0	73.9	11,400*	95.0	70.2	15,500	95.0	74.5	9,200*
90.0	67.2	14,700	90.0	69.6	16,800	90.0	68.8	16,500	90.0	71.8	15,400*	95.0	68.8	15,300	95.0	72.5	11,400*	100.0	68.9	14,300	100.0	73.1	9,200*
95.0	65.7	13,600	95.0	68.0	15,400	95.0	67.3	15,100	95.0	70.4	15,400*	100.0	67.4	14,100	100.0	71.1	11,400*	105.0	67.5	13,200	105.0	71.8	9,200*
100.0	64.2	12,500	100.0	66.5	14,100	100.0	65.9	13,800	100.0	68.9	14,600	105.0	66.1	13,000	105.0	69.7	11,400*	110.0	66.2	12,200	110.0	70.4	9,200*
105.0	62.7	11,500	105.0	64.9	13,000	105.0	64.5	12,800	105.0	67.4	13,400	110.0	64.7	12,000	110.0	68.3	11,300*	115.0	64.9	11,200	115.0	69.0	9,000*
110.0	61.1	10,600	110.0	63.3	12,000	110.0	63.0	11,800	110.0	65.9	12,400	115.0	63.3	11,000	115.0	66.8	11,000*	120.0	63.5	10,400	120.0	67.7	8,800*
115.0	59.5	9,800	115.0	61.7	11,000	115.0	61.5	10,800	115.0	64.4	11,400	120.0	61.8	10,200	120.0	65.3	10,800	125.0	62.2	9,600	125.0	66.2	8,600*
120.0	57.9	9,000	120.0	60.1	10,200	120.0	60.0	10,000	120.0	62.8	10,600	125.0	60.4	9,500	125.0	63.8	10,100	130.0	60.8	8,900	130.0	64.8	8,400*
125.0	56.3	8,300	125.0	58.4	9,400	125.0	58.4	9,300	125.0	61.2	9,800	130.0	58.9	8,800	130.0	62.3	9,400	135.0	59.4	8,300	135.0	63.4	8,300
130.0	54.6	7,700	130.0	56.7	8,700	130.0	56.9	8,600	130.0	59.6	9,100	135.0	57.4	8,200	135.0	60.8	8,700	140.0	57.9	7,700	140.0	61.9	8,100
135.0	52.9	7,100	135.0	54.9	8,000	135.0	55.3	8,000	135.0	58.0	8,400	140.0	55.9	7,500	140.0	59.2	8,100	145.0	56.5	7,100	145.0	60.4	7,800
140.0	51.1	6,500	140.0	53.1	7,400	140.0	53.6	7,300	140.0	56.3	7,700	145.0	54.3	7,000	145.0	57.6	7,500	150.0	55.0	6,600	150.0	58.8	7,200
145.0	49.3	5,900	145.0	51.2	6,900	145.0	52.0	6,800	145.0	54.6	7,200	150.0	52.8	6,500	150.0	56.0	6,900	155.0	53.5	6,100	155.0	57.2	6,700
150.0	47.4	5,400				150.0	50.3	6,200	150.0	52.8	6,700	155.0	51.1	5,900	155.0	54.3	6,400	160.0	51.9	5,500	160.0	55.6	6,200
155.0	45.5	4,900				155.0	48.5	5,700				160.0	49.5	5,400	160.0	52.5	5,900	165.0	50.3	5,100	165.0	54.0	5,700
160.0	43.5	4,400				160.0	46.7	5,100				165.0	47.7	4,900				170.0	48.7	4,600	170.0	52.3	5,200
165.0	41.5	4,000				165.0	44.8	4,700				170.0	46.0	4,400				175.0	47.0	4,200			
170.0	39.3	3,600				170.0	42.9	4,200				175.0	44.2	4,000				180.0	45.3	3,700			
175.0	37.0					175.0	40.9	3,800				180.0	42.3	3,600				185.0	43.5	3,400			
180.0						180.0	38.7	3,400															
Reeves	1		Reeves	1		Reeves	1		Reeves	1		Reeves	1		Reeves	1		Reeves	1		Reeves	1	

180' Boom																							
70 ft Jib																							
Offset Angle (deg.)																							
10			30																				
Load Radius (ft)	Boom Angle (deg.)	Rated Load (lbs)	Load Radius (ft)	Boom Angle (deg.)	Rated Load (lbs)																		
60.0	79.8	15,600*																					
65.0	78.6	15,400*																					
70.0	77.4	15,200*																					
75.0	76.2	15,000																					
80.0	75.0	14,800	80.0	80.0	8,100*																		
85.0	73.8	14,600	85.0	78.8	8,100*																		
90.0	72.6	14,400	90.0	77.5	8,100*																		
95.0	71.4	14,300	95.0	76.3	8,100*																		
100.0	70.1	14,100	100.0	75.0	8,100*																		
105.0	68.9	13,300	105.0	73.7	8,000*																		
110.0	67.6	12,300	110.0	72.4	7,800*																		
115.0	66.4	11,300	115.0	71.1	7,600*																		
120.0	65.1	10,500	120.0	69.8	7,400*																		
125.0	63.8	9,700	125.0	68.4	7,200*																		
130.0	62.5	9,100	130.0	67.1	7,100*																		
135.0	61.1	8,400	135.0	65.7	6,900*																		
140.0	59.8	7,800	140.0	64.3	6,800																		
145.0	58.4	7,200	145.0	62.9	6,600																		
150.0	57.0	6,700	150.0	61.4	6,500																		
155.0	55.6	6,300	155.0	59.9	6,400																		
160.0	54.1	5,700	160.0	58.4	6,300																		
165.0	52.7	5,200	165.0	56.9	6,000																		
170.0	51.1	4,700	170.0	55.3	5,500																		
175.0	49.6	4,300	175.0	53.7	5,000																		
180.0	48.0	3,900	180.0	52.0	4,500																		
185.0	46.4	3,500																					
Reeves	1		Reeves	1																			

Note: Designed and rated to comply with ANSI Code B30.5
 Capacities based on factors other than machine stability such as structural competence are shown by asterisk * in the charts.
 Refer to notes on page 21.

CK1200G-2

SPECIFICATIONS

Fixed Jib Lift Capacity

Full Counterweight: 76,320 lbs Carbody Weight: 14,640

190' Boom																							
30 ft Jib						40 ft Jib						50 ft Jib						60 ft Jib					
Offset Angle (deg.)						Offset Angle (deg.)						Offset Angle (deg.)						Offset Angle (deg.)					
10			30			10			30			10			30			10			30		
Load Radius (ft)	Boom Angle (deg.)	Rated Load (lbs)	Load Radius (ft)	Boom Angle (deg.)	Rated Load (lbs)	Load Radius (ft)	Boom Angle (deg.)	Rated Load (lbs)	Load Radius (ft)	Boom Angle (deg.)	Rated Load (lbs)	Load Radius (ft)	Boom Angle (deg.)	Rated Load (lbs)	Load Radius (ft)	Boom Angle (deg.)	Rated Load (lbs)	Load Radius (ft)	Boom Angle (deg.)	Rated Load (lbs)	Load Radius (ft)	Boom Angle (deg.)	Rated Load (lbs)
50.0	79.2	24,000*				55.0	78.9	24,000*				55.0	79.7	20,000*				60.0	79.4	18,000*			
55.0	77.9	24,000*				60.0	77.6	24,000*				60.0	78.5	20,000*				65.0	78.2	18,000*			
60.0	76.6	24,000*	60.0	78.9	21,000*	65.0	76.3	24,000*	65.0	79.4	15,400*	65.0	77.3	20,000*				70.0	77.0	18,000*			
65.0	75.2	24,000*	65.0	77.6	21,000*	70.0	75.0	24,000*	70.0	78.0	15,400*	70.0	76.0	20,000*	70.0	79.7	11,400*	75.0	75.8	18,000*			
70.0	73.9	23,600	70.0	76.2	21,000*	75.0	73.7	21,500	75.0	76.7	15,400*	75.0	74.8	20,000*	75.0	78.5	11,400*	80.0	74.6	18,000*	80.0	78.9	9,200*
75.0	72.5	21,100	75.0	74.8	21,000*	80.0	72.4	19,500	80.0	75.4	15,400*	80.0	73.6	19,800	80.0	77.2	11,400*	85.0	73.4	18,000*	85.0	77.6	9,200*
80.0	71.1	19,100	80.0	73.4	19,900	85.0	71.1	17,700	85.0	74.0	15,400*	85.0	72.3	18,000	85.0	75.9	11,400*	90.0	72.2	16,700	90.0	76.4	9,200*
85.0	69.7	17,400	85.0	72.0	18,100	90.0	69.7	16,200	90.0	72.7	15,400*	90.0	71.0	16,400	90.0	74.6	11,400*	95.0	71.0	15,200	95.0	75.1	9,200*
90.0	68.3	15,800	90.0	70.6	16,600	95.0	68.4	14,700	95.0	71.3	15,400*	95.0	69.7	15,000	95.0	73.3	11,400*	100.0	69.8	13,900	100.0	73.9	9,200*
95.0	66.9	14,400	95.0	69.1	15,100	100.0	67.0	13,500	100.0	69.9	14,300	100.0	68.5	13,800	100.0	72.0	11,400*	105.0	68.5	12,800	105.0	72.6	9,200*
100.0	65.5	13,200	100.0	67.7	13,800	105.0	65.7	12,400	105.0	68.5	13,200	105.0	67.1	12,600	105.0	70.6	11,400*	110.0	67.3	11,800	110.0	71.3	9,200*
105.0	64.0	12,100	105.0	66.2	12,700	110.0	64.3	11,400	110.0	67.1	12,100	110.0	65.8	11,700	110.0	69.3	11,300*	115.0	66.0	10,900	115.0	70.0	9,100*
110.0	62.5	11,100	110.0	64.7	11,600	115.0	62.9	10,500	115.0	65.6	11,100	115.0	64.5	10,700	115.0	67.9	11,200*	120.0	64.7	10,000	120.0	68.7	8,900*
115.0	61.1	10,200	115.0	63.2	10,700	120.0	61.4	9,700	120.0	64.2	10,200	120.0	63.1	9,900	120.0	66.5	10,600	125.0	63.4	9,300	125.0	67.3	8,700*
120.0	59.5	9,400	120.0	61.6	9,800	125.0	60.0	8,900	125.0	62.7	9,500	125.0	61.8	9,100	125.0	65.1	9,800	130.0	62.1	8,600	130.0	66.0	8,500*
125.0	58.0	8,700	125.0	60.1	9,100	130.0	58.5	8,200	130.0	61.2	8,700	130.0	60.4	8,400	130.0	63.7	9,100	135.0	60.7	8,000	135.0	64.6	8,400
130.0	56.4	8,000	130.0	58.5	8,300	135.0	57.0	7,600	135.0	59.6	8,100	135.0	59.0	7,800	135.0	62.2	8,400	140.0	59.4	7,300	140.0	63.2	8,000
135.0	54.8	7,400	135.0	56.8	7,700	140.0	55.5	7,000	140.0	58.1	7,400	140.0	57.5	7,200	140.0	60.8	7,800	145.0	58.0	6,800	145.0	61.8	7,500
140.0	53.2	6,700	140.0	55.2	7,000	145.0	53.9	6,300	145.0	56.5	6,900	145.0	56.1	6,600	145.0	59.2	7,200	150.0	56.6	6,200	150.0	60.3	6,900
145.0	51.5	6,000	145.0	53.4	6,400	150.0	52.3	5,700	150.0	54.8	6,200	150.0	54.6	6,000	150.0	57.7	6,600	155.0	55.2	5,600	155.0	58.9	6,400
150.0	49.8	5,400	150.0	51.7	5,800	155.0	50.7	5,200	155.0	53.2	5,600	155.0	53.1	5,400	155.0	56.1	6,100	160.0	53.8	5,100	160.0	57.4	5,800
155.0	48.1	4,900				160.0	49.0	4,600				160.0	51.5	4,900	160.0	54.5	5,400	165.0	52.3	4,600	165.0	55.8	5,300
160.0	46.3	4,400				165.0	47.3	4,200				165.0	49.9	4,400	165.0	52.9	4,900	170.0	50.8	4,100	170.0	54.3	4,800
165.0	44.4	3,900				170.0	45.6	3,700				170.0	48.3	3,900				175.0	49.2	3,700	175.0	52.6	4,300
170.0	42.5	3,400				175.0	43.7	3,300				175.0	46.6	3,500				180.0	47.6	3,300			
Reeves	1		Reeves	1		Reeves	1		Reeves	1		Reeves	1		Reeves	1		Reeves	1		Reeves	1	

190' Boom																							
70 ft Jib																							
Offset Angle (deg.)																							
10			30																				
Load Radius (ft)	Boom Angle (deg.)	Rated Load (lbs)	Load Radius (ft)	Boom Angle (deg.)	Rated Load (lbs)																		
65.0	79.0	15,400*																					
70.0	77.9	15,200*																					
75.0	76.8	15,000																					
80.0	75.6	14,900																					
85.0	74.5	14,700	80.0	80.4	8,100*																		
90.0	73.3	14,500	85.0	79.2	8,100*																		
95.0	72.1	14,300	90.0	78.0	8,100*																		
100.0	71.0	14,100	95.0	76.8	8,100*																		
105.0	69.8	13,000	100.0	75.6	8,100*																		
110.0	68.6	12,000	105.0	74.4	8,000*																		
115.0	67.4	11,000	110.0	73.2	7,900*																		
120.0	66.1	10,200	115.0	71.9	7,700*																		
125.0	64.9	9,400	120.0	70.7	7,500*																		
130.0	63.6	8,700	125.0	69.4	7,400*																		
135.0	62.4	8,100	130.0	68.1	7,200*																		
140.0	61.1	7,400	135.0	66.8	7,000																		
145.0	59.8	6,900	140.0	65.5	6,900																		
150.0	58.5	6,300	145.0	64.1	6,700																		
155.0	57.1	5,800	150.0	62.8	6,600																		
160.0	55.8	5,200	155.0	61.4	6,500																		
165.0	54.4	4,700	160.0	60.0	6,100																		
170.0	53.0	4,200	165.0	58.5	5,600																		
175.0	51.5	3,800	170.0	57.0	5,100																		
180.0	50.0	3,400	175.0	55.5	4,600																		
			180.0	54.0	4,100																		
			185.0	52.4	3,700																		
			190.0	50.8	3,300																		
Reeves	1		Reeves	1																			

Note: Designed and rated to comply with ANSI Code B30.5

Capacities based on factors other than machine stability such as structural competence are shown by asterisk * in the charts.

Refer to notes on page 21.

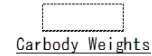
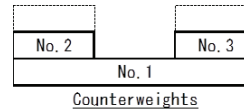
Supplemental Data - Clamshell

- Rated loads included in the charts are the maximum allowable freely suspended loads at a given boom length, boom angle and load radius, and have been determined for the machine standing level on firm supporting surface under ideal operating conditions. The user must limit or derate rated loads to allow for adverse conditions (such as soft or uneven ground, out-of-level conditions, wind, side loads, pendulum action, jerking or sudden stopping of loads, inexperience of personnel, multiple machine lifts, and traveling with a load).
- Rated loads do not exceed 66% of minimum tipping loads. Rated loads based on factors other than machine stability such as structural competence are shown by asterisk * in the charts.
- The machine must be reeved and set-up as stated in the operation manual and all the instruction manuals if these manuals are missing, obtain replacements.
 - The crane must be level to within 1% of a firm supporting surface.
 - Boom backstops are required for all boom length.
 - Gantry must be fully raised position for all operations.
 - Crawlers must be fully extended and be locked in position.
 - Must have 50,900 lbs (2) Counterweights installed, and without carbody weights.
- Do not attempt to lift where no radius on load is listed as crane may tip or collapse.
- Attempting to lift more than rated loads may cause machine to tip or collapse. Do not tip machine to determine rated loads.
- Weight of hooks, hook blocks, slings and other lifting devices are a part of the total load. Their total weight must be subtracted from the rated load to obtain the weight that can be lifted.
- The boom should be erected over the front of the crawlers, not laterally.
- Least stable position is over the side.
- Maximum hoist load for number of reeving parts of line for hoist rope.

No. of Parts of Line	1
Maximum Loads (lbs)	25,000

10. Assembling the Counterweight

50,900 lbs counterweight (No. 1 ~ No. 3)
Without Carbody weights



- Lifting capacities listed apply only to the machine as originally manufactured and designed by KOBELCO CONSTRUCTION MACHINERY CO.,LTD. Modifications to this machine or use of equipment other than that specified can reduce operating capacity.

Operation of this equipment in excess of rated loads or disregard of instruction voids the warranty.

Clamshell

Boom:

Welded lattice construction using tubular, high-tensile steel chords with pin connections between each section.

Basic boom length: 50 ft (15.2 m)

Max. boom length: 120 ft (36.6 m)

Limit on clamshell bucket weight: 4,600 lbs (2,100 kg)

Optional tagline: Hydraulic operated type and spring type.

Boom Component Chart:

Boom length ft (m)	Boom arrangement
50 (15.2)	Base-A-Tip
60 (18.3)	Base-A-A-Tip, Base-B-Tip
70 (21.3)	Base-A-B-Tip
80 (24.4)	Base-A-A-B-Tip, Base-B-B-Tip
90 (27.4)	Base-A-C-Tip
100 (30.5)	Base-A-A-B-B-Tip, Base-A-A-C-Tip
110 (33.5)	Base-A-B-C-Tip
120 (36.6)	Base-A-A-B-C-Tip, Base-B-B-C-Tip

Base = Boom Base

Insert: A = 10 ft (3.05 m)

B = 20 ft (6.10 m)

C = 40 ft (12.2 m)

Tip = Boom Tip

- Figures represent maximum allowable capacity, and assume level, ground and ideal working conditions.
- Capacities are calculated at 66% of the minimum tipping loads.
- Capacities are maximum recommended by PCSA Standard #4. Allowances must be made by the user for such unfavorable conditions as a sort of uneven supporting surface, rapid cycle operations, or bucket.
- The combined weight of the bucket and load must not exceed these capacities.

3 Counterweights (50,900 lbs) - Without Carbody weights - Crawlers in extended position.

50' Boom			60' Boom			70' Boom		
Load Radius (ft)	Boom Angle (deg.)	360° Rated Load (lbs)	Load Radius (ft)	Boom Angle (deg.)	360° Rated Load (lbs)	Load Radius (ft)	Boom Angle (deg.)	360° Rated Load (lbs)
26.0	64.4	25,000 *	30.0	64.8	25,000 *	34.0	65.0	25,000 *
28.0	61.8	25,000 *	32.0	62.6	25,000 *	36.0	63.2	25,000 *
30.0	59.2	25,000 *	34.0	60.4	25,000 *	38.0	61.3	25,000 *
32.0	56.4	25,000 *	36.0	58.2	25,000 *	40.0	59.4	25,000 *
34.0	53.6	25,000 *	38.0	55.9	25,000 *	45.0	54.5	22,700
36.0	50.7	25,000 *	40.0	53.5	25,000 *	50.0	49.2	19,600
38.0	47.6	25,000 *	45.0	47.2	22,900	55.0	43.5	17,200
40.0	44.3	25,000 *	50.0	40.2	19,800	60.0	37.1	15,200
45.0	35.2	25,000 *	55.0	31.9	17,400			
		23,100						

Refer to notes on page 35.

Clamshell

3 Counterweights (50,900 lbs) - Without Carbody weights - Crawlers in extended position.

80' Boom			90' Boom			100' Boom		
Load Radius (ft)	Boom Angle (deg.)	360° Rated Load (lbs)	Load Radius (ft)	Boom Angle (deg.)	360° Rated Load (lbs)	Load Radius (ft)	Boom Angle (deg.)	360° Rated Load (lbs)
40.0	63.6	25,000 *	45.0	63.2	21,600 *	50.0	62.9	18,500 *
45.0	59.5	22,500	50.0	59.5	19,200	55.0	59.6	16,500
50.0	55.2	19,400	55.0	55.8	16,800	60.0	56.2	14,600
55.0	50.7	17,000	60.0	51.8	14,800	65.0	52.6	12,800
60.0	45.8	15,000	65.0	47.6	13,000	70.0	48.9	11,500
65.0	40.5	13,200	70.0	43.0	11,700	75.0	45.0	10,400
70.0	34.6	11,900	75.0	38.1	10,600	80.0	40.7	9,300
			80.0	32.5	9,500	85.0	36.0	8,400
						90.0	30.8	7,700
110' Boom			120' Boom					
Load Radius (ft)	Boom Angle (deg.)	360° Rated Load (lbs)	Load Radius (ft)	Boom Angle (deg.)	360° Rated Load (lbs)			
55.0	62.6	15,900 *	60.0	62.4	13,900 *			
60.0	59.6	14,300	65.0	59.7	12,600			
65.0	56.5	12,600	70.0	56.8	11,200			
70.0	53.3	11,200	75.0	53.9	9,900			
75.0	50.0	9,900	80.0	50.9	9,000			
80.0	46.5	9,000	85.0	47.7	8,200			
85.0	42.7	8,200	90.0	44.4	7,300			
90.0	38.7	7,300	95.0	40.8	6,600			
95.0	34.3	6,600	100.0	37.0	6,000			
			105.0	32.8	5,500			

Refer to notes on page 35.

Supplemental Data - Barge

- Rated loads included in the charts are the maximum allowable freely suspended loads at a given boom length, boom angle and load radius, and have been determined for the machine standing level on firm supporting surface under ideal operating conditions. The user must limit or de-rate rated loads to allow for adverse conditions (such as soft or uneven ground, out-of-level conditions, wind, side loads, pendulum action, jerking or sudden stopping of loads, inexperience of personnel, multiple machine lifts, and traveling with a load).
- Rated loads do not exceed 75% of minimum tipping loads. Rated loads based on factors other than machine stability such as structural competence are shown by asterisk * in the charts.
- The machine must be reeved and set-up as stated in the operation manual and all the instruction manuals if these manuals are missing, obtain replacements.
 - Machine shall be positively secured to prevent shifting.
 - Boom backstops are required for all boom length.
 - Gantry must be fully raised position for all operations.
 - Crawlers must be fully extended and be locked in position.
 - Must have 76,300 lbs (5) Counterweights fully installed.
 - Must have 14,300 lbs (2) Carbody weights fully installed.
- Do not attempt to lift where no radius on load is listed as crane may tip or collapse.
- Attempting to lift more than rated loads may cause machine to tip or collapse. Do not tip machine to determine rated loads.
- Weight of hooks, hook blocks, slings and other lifting devices are a part of the total load. Their total weight must be subtracted from the rated load to obtain the weight that can be lifted.
- When lifting over boom point with jib or auxiliary sheave, rated loads for the boom must be deducted as shown below.

Jib length(ft)	Aux.	30'	40'	50'	60'	70'
Deductions (lbs)	700	Not applicable				

When auxiliary sheave is used for 10 or 9 reeving parts of line, it is not required to deduct 700 lbs from rated loads.

- To install the jib is prohibited when the machine is on a barge.
- The total load that can be lifted over an auxiliary sheave is the value for 700 lbs deducted from rated load for the boom without auxiliary sheave, but it should not exceed auxiliary maximum hoist loads.

- Boom lengths that can attach auxiliary sheave are from 50 ft (15.2 m) to 220 ft (67.1 m).
- The boom should be erected over the front of the crawlers, not laterally.
- Least stable position is over the side.
- Maximum hoist load for number of reeving parts of line for hoist rope.

Main Boom Hoist Loads

No. of Parts of Line	1	2	3	4	5
Maximum Loads (lbs)	25,000	50,000	75,000	100,000	125,000

No. of Parts of Line	6	7	8	9 (※)	10 (※)
Maximum Loads (lbs)	150,000	175,000	200,000	225,000	240,000

※Use auxiliary sheave.

Auxiliary Hoist Loads

No. of Parts of Line	1	2
Maximum Loads (lbs)	25,000	50,000

14. Assembling the Counterweight

76,300 lbs counterweight (No. 1~No. 5)
14,300 lbs carbody weight

No. 4	No. 5
No. 2	No. 3
No. 1	

Counterweights



Carbody Weights

15. Weight of recommended hook block.

Hook block	120USt	77USt	39USt	BALL HOOK
Weight (lbs)	3,750	1,990	1,545	1,000

Warning: If the weight of the hook block to be used is lighter than the recommended weight, the jib may turn over backward or will be difficult to lower the empty hook block.

- Rated loads listed apply only to the machine as originally manufactured and designed by KOBELCO CONSTRUCTION MACHINERY CO., LTD. Modifications to this machine or use of equipment other than that specified can reduce operating capacity.

17. Designed and rated to comply with ANSI Code B30.5.

Operation of this equipment in excess of rated loads or disregard of instruction voids the warranty.

CK1200G-2

SPECIFICATIONS

Barge

5 Counterweights (76,300 lbs) - 2 Carbody weights (14,300 lbs) - Crawlers in extended position.

50' Boom						60' Boom						70' Boom					
360° Rated Load (lbs)						360° Rated Load (lbs)						360° Rated Load (lbs)					
Load Radius (ft)	Boom Angle (deg.)	0 Degree Machine List	1 Degree Machine List	2 Degree Machine List	3 Degree Machine List	Load Radius (ft)	Boom Angle (deg.)	0 Degree Machine List	1 Degree Machine List	2 Degree Machine List	3 Degree Machine List	Load Radius (ft)	Boom Angle (deg.)	0 Degree Machine List	1 Degree Machine List	2 Degree Machine List	3 Degree Machine List
12.0	81.4	240,000*				13.5	81.4	210,000*				15.0	81.4	190,000*			
13.0	80.2	220,000*				14.0	80.9	204,000*				16.0	80.5	177,000*			
14.0	79.0	206,000*				15.0	79.9	190,000*				17.0	79.7	163,000*			
15.0	77.9	191,000*	191,000*			16.0	78.9	177,000*	168,100			18.0	78.9	150,000*	142,900		
16.0	76.7	177,000*	177,000*			17.0	78.0	163,000*	163,000*			19.0	78.0	142,100*	137,800		
17.0	75.5	163,000*	163,000*			18.0	77.0	150,000*	150,000*			20.0	77.2	135,000*	132,600		
18.0	74.3	150,000*	150,000*	138,800		19.0	76.0	142,100*	142,100*			22.0	75.5	122,700*	117,400		
19.0	73.1	142,100*	142,100*	133,700		20.0	75.0	135,000*	135,000*			24.0	73.8	111,700	103,600		
20.0	71.9	135,000*	135,000*	128,700		22.0	73.0	122,700*	118,800	106,200		26.0	72.1	99,200	92,700	90,900	
22.0	69.5	122,800*	120,600	113,200	104,500	24.0	71.0	111,700	104,800	98,100	84,700	28.0	70.3	89,000	83,700	79,100	70,200
24.0	67.0	111,900	106,400	100,700	95,900	26.0	69.0	99,200	93,800	88,900	82,100	30.0	68.6	80,600	76,400	72,500	68,200
26.0	64.4	99,600	95,100	90,600	86,900	28.0	66.9	89,200	84,700	80,700	76,700	32.0	66.8	73,800	70,100	66,800	63,700
28.0	61.8	89,500	85,800	82,200	79,200	30.0	64.8	80,900	77,100	73,800	70,600	34.0	65.0	67,900	64,800	62,000	59,300
30.0	59.2	81,100	78,200	75,300	72,800	32.0	62.6	73,800	70,800	68,100	65,400	36.0	63.2	62,800	60,100	57,700	55,300
32.0	56.4	74,200	71,800	69,300	67,300	34.0	60.4	68,100	65,500	63,200	60,900	38.0	61.3	58,400	56,000	54,000	52,000
34.0	53.6	68,300	66,300	64,300	62,500	36.0	58.2	63,000	60,900	58,700	56,800	40.0	59.4	54,400	52,500	50,700	48,600
36.0	50.7	63,200	61,500	59,800	58,400	38.0	55.9	58,600	56,700	54,800	53,300	45.0	54.5	46,500	45,100	43,700	42,500
38.0	47.6	58,800	57,500	56,100	54,800	40.0	53.5	54,600	53,100	51,500	50,200	50.0	49.2	40,500	39,700	38,700	37,800
						45.0	47.2	46,700	45,800	44,600	43,600	55.0	43.5	35,900	35,200	34,500	33,900
Reeves		10	8	6	5	Reeves		9	7	5	4	Reeves		8	6	4	3
80' Boom						90' Boom						100' Boom					
360° Rated Load (lbs)						360° Rated Load (lbs)						360° Rated Load (lbs)					
Load Radius (ft)	Boom Angle (deg.)	0 Degree Machine List	1 Degree Machine List	2 Degree Machine List	3 Degree Machine List	Load Radius (ft)	Boom Angle (deg.)	0 Degree Machine List	1 Degree Machine List	2 Degree Machine List	3 Degree Machine List	Load Radius (ft)	Boom Angle (deg.)	0 Degree Machine List	1 Degree Machine List	2 Degree Machine List	3 Degree Machine List
16.5	81.4	171,000*				18.0	81.4	150,000*				19.5	81.4	137,500*			
17.0	81.0	163,000*				19.0	80.7	140,000*				20.0	81.1	135,000*			
18.0	80.3	150,000*				20.0	80.1	135,000*				22.0	79.9	122,200*			
19.0	79.6	142,100*				22.0	78.8	122,400*				24.0	78.8	111,300			
20.0	78.8	135,000*				24.0	77.5	111,500	100,600			26.0	77.6	98,700	89,300		
22.0	77.4	122,400*	114,700			26.0	76.2	98,900	90,600			28.0	76.4	88,600	81,000		
24.0	75.9	111,500	102,300			28.0	74.8	88,800	82,000	68,800		30.0	75.2	80,200	73,800		
26.0	74.4	98,900	91,500			30.0	73.5	80,400	74,700	67,800		32.0	74.0	73,100	67,800	60,100	
28.0	72.9	88,800	82,700	76,200		32.0	72.2	73,400	68,600	64,400		34.0	72.8	67,200	62,700	58,200	
30.0	71.4	80,400	75,400	70,800	60,400	34.0	70.8	67,400	63,400	59,800	51,700	36.0	71.6	62,100	58,200	54,700	45,500
32.0	69.9	73,400	69,100	65,400	59,300	36.0	69.5	62,300	58,900	55,700	51,100	38.0	70.4	57,700	54,200	51,300	45,100
34.0	68.3	67,400	63,800	60,600	57,200	38.0	68.1	57,900	54,800	52,100	49,500	40.0	69.2	53,700	50,900	48,200	44,700
36.0	66.8	62,300	59,300	56,500	54,000	40.0	66.7	54,000	51,400	48,600	46,900	45.0	66.1	45,800	43,700	41,700	39,900
38.0	65.2	57,900	55,400	52,900	50,700	45.0	63.2	46,000	44,300	42,300	40,700	50.0	62.9	39,900	38,300	36,700	35,100
40.0	63.6	54,200	51,800	49,600	47,600	50.0	59.5	40,100	38,800	37,400	36,100	55.0	59.6	35,000	33,800	32,700	31,500
45.0	59.5	46,200	44,600	43,000	41,600	55.0	55.8	35,400	34,400	33,300	32,200	60.0	56.2	31,300	30,300	29,200	28,300
50.0	55.2	40,100	39,100	37,900	36,800	60.0	51.8	31,500	30,700	29,900	29,100	65.0	52.6	27,900	27,200	26,400	25,700
55.0	50.7	35,400	34,700	33,800	32,900	65.0	47.6	28,400	27,800	27,100	26,500	70.0	48.9	25,300	24,700	24,100	23,500
60.0	45.8	31,700	31,100	30,400	29,800	70.0	43.0	25,700	25,300	24,800	24,300	75.0	45.0	23,100	22,600	22,100	21,600
65.0	40.5	28,600	28,100	27,600	27,100							80.0	40.7	21,100	20,800	20,400	20,000
Reeves		7	5	4	3	Reeves		6	5	3	3	Reeves		6	4	3	2

Refer to notes on page 38.

CK1200G-2

SPECIFICATIONS

Barge

5 Counterweights (76,300 lbs) - 2 Carbody weights (14,300 lbs) - Crawlers in extended position.

110' Boom						120' Boom						130' Boom					
360° Rated Load (lbs)						360° Rated Load (lbs)						360° Rated Load (lbs)					
Load Radius (ft)	Boom Angle (deg.)	0 Degree Machine List	1 Degree Machine List	2 Degree Machine List	3 Degree Machine List	Load Radius (ft)	Boom Angle (deg.)	0 Degree Machine List	1 Degree Machine List	2 Degree Machine List	3 Degree Machine List	Load Radius (ft)	Boom Angle (deg.)	0 Degree Machine List	1 Degree Machine List	2 Degree Machine List	3 Degree Machine List
20.9	81.4	128,600*				22.4	81.4	121,000*				23.9	81.4	100,000*			
22.0	80.8	122,000*				24.0	80.6	111,100				24.0	81.4	100,000*			
24.0	79.8	111,300				26.0	79.7	98,500				26.0	80.5	98,300			
26.0	78.7	98,500				28.0	78.7	88,400				28.0	79.6	88,100			
28.0	77.7	88,400	80,000			30.0	77.7	80,000	72,100			30.0	78.7	79,800			
30.0	76.6	80,000	73,000			32.0	76.7	72,900	66,800			32.0	77.8	72,700	65,500		
32.0	75.5	72,900	67,100			34.0	75.8	67,000	61,700			34.0	76.9	66,700	61,100		
34.0	74.4	67,000	62,000	53,300		36.0	74.8	61,900	57,300	48,000		36.0	76.0	61,700	56,700		
36.0	73.3	61,900	57,600	52,700		38.0	73.8	57,500	53,400	47,500		38.0	75.1	57,300	52,800		
38.0	72.3	57,500	53,600	50,400		40.0	72.8	53,500	49,900	46,300		40.0	74.1	53,300	49,500	42,400	
40.0	71.2	53,500	50,300	47,400	39,900	45.0	70.3	45,600	43,000	40,500	35,300	45.0	71.8	45,400	42,500	40,000	
45.0	68.4	45,600	43,200	41,000	38,300	50.0	67.7	39,400	37,600	35,700	33,000	50.0	69.5	39,400	37,300	35,100	31,000
50.0	65.5	39,600	37,800	36,100	34,500	55.0	65.1	34,800	33,300	31,700	30,300	55.0	67.1	34,600	32,900	31,100	29,500
55.0	62.6	34,800	33,500	32,100	30,900	60.0	62.4	30,800	29,600	28,400	27,300	60.0	64.7	30,600	29,300	28,000	26,800
60.0	59.6	31,000	29,900	28,700	27,700	65.0	59.7	27,700	26,700	25,700	24,800	65.0	62.2	27,500	26,400	25,300	24,300
65.0	56.5	27,700	26,900	26,000	25,100	70.0	56.8	25,100	24,200	23,300	22,500	70.0	59.7	24,900	23,900	22,900	22,100
70.0	53.3	25,100	24,400	23,700	23,000	75.0	53.9	22,700	22,000	21,300	20,700	75.0	57.1	22,400	21,700	20,900	20,200
75.0	50.0	22,900	22,300	21,700	21,100	80.0	50.9	20,700	20,200	19,600	19,100	80.0	54.4	20,500	19,900	19,300	18,700
80.0	46.5	20,900	20,400	19,900	19,400	85.0	47.7	19,100	18,600	18,100	17,700	85.0	51.6	18,900	18,300	17,800	17,300
85.0	42.7	19,100	18,800	18,400	18,100	90.0	44.4	17,600	17,200	16,800	16,400	90.0	48.8	17,400	16,900	16,400	16,000
						95.0	40.8	16,300	16,000	15,600	15,300	95.0	45.7	16,000	15,600	15,200	14,700
												100.0	42.5	14,700	14,500	14,200	13,900
												105.0	39.1	13,800	13,600	13,300	13,100
Reeves		6	4	3	2	Reeves		5	3	2	2	Reeves		4	3	2	2
140' Boom						150' Boom						160' Boom					
360° Rated Load (lbs)						360° Rated Load (lbs)						360° Rated Load (lbs)					
Load Radius (ft)	Boom Angle (deg.)	0 Degree Machine List	1 Degree Machine List	2 Degree Machine List	3 Degree Machine List	Load Radius (ft)	Boom Angle (deg.)	0 Degree Machine List	1 Degree Machine List	2 Degree Machine List	3 Degree Machine List	Load Radius (ft)	Boom Angle (deg.)	0 Degree Machine List	1 Degree Machine List	2 Degree Machine List	3 Degree Machine List
25.4	81.4	100,000*				26.9	81.4	92,800				28.4	81.4	75,000			
26.0	81.2	98,100				28.0	81.0	87,700				30.0	80.8	75,000			
28.0	80.3	87,900				30.0	80.2	79,300				32.0	80.1	72,300			
30.0	79.5	79,500				32.0	79.4	72,300				34.0	79.4	66,300			
32.0	78.7	72,500				34.0	78.7	66,300				36.0	78.6	61,200			
34.0	77.8	66,500	60,000			36.0	77.9	61,000	54,600			38.0	77.9	56,800	50,100		
36.0	77.0	61,500	56,100			38.0	77.1	56,600	51,500			40.0	77.2	52,900	48,000		
38.0	76.1	57,000	52,300			40.0	76.3	52,600	48,300			45.0	75.3	44,900	41,200		
40.0	75.3	53,100	48,900			45.0	74.3	44,700	41,400	34,300		50.0	73.5	38,800	36,100	30,500	
45.0	73.2	45,100	42,100	37,700		50.0	72.3	38,800	36,200	33,000		55.0	71.6	33,900	31,900	29,400	
50.0	71.0	39,000	36,800	34,500		55.0	70.3	33,900	31,900	29,900		60.0	69.7	30,200	28,400	26,700	22,200
55.0	68.8	34,300	32,500	30,600	27,500	60.0	68.3	29,900	28,400	26,900	24,300	65.0	67.8	26,800	25,400	24,100	21,700
60.0	66.6	30,400	28,900	27,300	26,000	65.0	66.2	26,800	25,500	24,200	22,900	70.0	65.8	24,200	22,900	21,700	20,600
65.0	64.4	27,100	25,900	24,700	23,600	70.0	64.1	24,200	23,000	21,800	20,900	75.0	63.8	21,800	20,800	19,800	19,000
70.0	62.1	24,400	23,500	22,500	21,600	75.0	61.9	21,800	20,800	19,900	19,100	80.0	61.8	19,800	19,000	18,200	17,500
75.0	59.7	22,200	21,400	20,500	19,700	80.0	59.7	19,800	19,000	18,100	17,500	85.0	59.7	18,200	17,500	16,700	16,100
80.0	57.3	20,200	19,500	18,700	18,100	85.0	57.5	18,000	17,400	16,800	16,200	90.0	57.6	16,700	16,100	15,400	14,800
85.0	54.8	18,500	17,800	17,200	16,700	90.0	55.2	16,700	16,100	15,500	15,000	95.0	55.5	15,400	14,800	14,100	13,700
90.0	52.3	16,900	16,400	15,900	15,400	95.0	52.8	15,400	14,800	14,200	13,900	100.0	53.3	14,100	13,700	13,200	12,700
95.0	49.6	15,600	15,200	14,800	14,400	100.0	50.4	14,100	13,700	13,300	12,900	105.0	51.0	13,200	12,700	12,200	11,800
100.0	46.9	14,500	14,100	13,700	13,300	105.0	47.8	13,200	12,700	12,300	11,900	110.0	48.6	12,100	11,700	11,300	11,000
105.0	44.0	13,400	13,100	12,800	12,500	110.0	45.2	12,100	11,700	11,400	11,100	115.0	46.2	11,200	10,900	10,600	10,300
110.0	40.9	12,500	12,200	11,900	11,700	115.0	42.4	11,200	11,000	10,700	10,500	120.0	43.7	10,500	10,200	9,800	9,600
115.0	37.7	11,600	11,400	11,200	11,000	120.0	39.5	10,500	10,300	10,100	9,900	125.0	41.0	9,700	9,500	9,200	9,000
												130.0	38.1	9,200	8,800	8,600	8,400
Reeves		4	3	2	2	Reeves		4	3	2	2	Reeves		3	3	2	2

Refer to notes on page 38.

CK1200G-2

SPECIFICATIONS

Barge

5 Counterweights (76,300 lbs) - 2 Carbody weights (14,300 lbs) - Crawlers in extended position.

170' Boom						180' Boom						190' Boom					
360° Rated Load (lbs)						360° Rated Load (lbs)						360° Rated Load (lbs)					
Load Radius (ft)	Boom Angle (deg.)	0 Degree Machine List	1 Degree Machine List	2 Degree Machine List	3 Degree Machine List	Load Radius (ft)	Boom Angle (deg.)	0 Degree Machine List	1 Degree Machine List	2 Degree Machine List	3 Degree Machine List	Load Radius (ft)	Boom Angle (deg.)	0 Degree Machine List	1 Degree Machine List	2 Degree Machine List	3 Degree Machine List
29.9	81.4	75,000*				31.4	81.4	73,400				32.9	81.4	66,300*			
30.0	81.4	75,000*				32.0	81.2	71,800				34.0	81.1	65,400			
32.0	80.7	72,000				34.0	80.6	65,900				36.0	80.5	60,400			
34.0	80.0	66,100				36.0	79.9	60,600				38.0	79.8	55,900			
36.0	79.3	60,800				38.0	79.3	56,200				40.0	79.2	52,000			
38.0	78.6	56,400	46,200			40.0	78.6	52,200	42,100			45.0	77.7	44,000	37,600		
40.0	77.9	52,400	45,700			45.0	77.0	44,300	40,000			50.0	76.1	37,900	34,300		
45.0	76.2	44,500	40,700			50.0	75.4	38,100	35,100			55.0	74.6	33,000	30,400		
50.0	74.5	38,500	35,700			55.0	73.7	33,200	30,900	24,900		60.0	73.0	29,100	27,100	22,100	
55.0	72.7	33,700	31,400	27,100		60.0	72.0	29,500	27,500	24,200		65.0	71.4	26,000	24,100	21,500	15,900
60.0	70.9	29,700	27,800	25,900		65.0	70.3	26,200	24,600	22,900	17,700	70.0	69.8	23,100	21,700	20,300	15,600
65.0	69.1	26,400	24,900	23,500	19,500	70.0	68.6	23,500	22,100	20,800	17,400	75.0	68.2	20,900	19,600	18,500	15,200
70.0	67.3	23,800	22,500	21,300	19,200	75.0	66.9	21,100	20,000	18,800	17,000	80.0	66.6	18,900	17,800	16,800	15,000
75.0	65.5	21,600	20,400	19,400	18,200	80.0	65.2	19,100	18,200	17,300	16,300	85.0	64.9	17,100	16,200	15,300	14,400
80.0	63.6	19,600	18,600	17,700	16,800	85.0	63.4	17,600	16,700	15,900	15,100	90.0	63.2	15,600	14,800	14,100	13,400
85.0	61.7	17,800	17,000	16,200	15,500	90.0	61.6	16,000	15,300	14,500	13,800	95.0	61.5	14,300	13,600	13,000	12,300
90.0	59.8	16,300	15,600	14,900	14,300	95.0	59.8	14,700	14,000	13,300	12,700	100.0	59.8	13,200	12,500	11,900	11,300
95.0	57.8	14,900	14,400	13,800	13,200	100.0	57.9	13,400	12,800	12,200	11,800	105.0	58.0	12,100	11,400	10,900	10,400
100.0	55.8	13,800	13,300	12,700	12,200	105.0	56.0	12,300	11,800	11,300	10,900	110.0	56.2	11,000	10,500	10,000	9,600
105.0	53.7	12,700	12,200	11,700	11,400	110.0	54.1	11,400	10,900	10,500	10,100	115.0	54.4	10,100	9,700	9,300	8,800
110.0	51.6	11,600	11,300	10,900	10,600	115.0	52.1	10,500	10,000	9,700	94,00	120.0	52.5	9,400	8,900	8,600	8,100
115.0	49.4	11,000	10,500	10,200	9,900	120.0	50.0	9,900	9,200	9,000	8,700	125.0	50.6	8,800	8,200	7,900	7,500
120.0	47.1	10,100	9,800	9,500	9,200	125.0	47.9	9,000	8,600	8,300	8,100	130.0	48.6	7,900	7,500	7,200	6,900
125.0	44.7	9,400	9,100	8,900	8,600	130.0	45.7	8,300	8,000	7,700	7,500	135.0	46.5	7,200	6,900	6,700	6,400
130.0	42.3	8,800	8,400	8,200	8,000	135.0	43.4	7,700	7,400	7,200	7,000	140.0	44.4	6,800	6,400	6,200	5,900
135.0	39.7	8,100	7,800	7,600	7,400	140.0	41.0	7,200	6,900	6,700	6,500	145.0	42.2	6,100	5,900	5,700	5,500
140.0	37.0	7,400	7,300	7,100	6,900	145.0	38.5	6,600	6,400	6,200	6,000	150.0	39.9	5,700	5,500	5,300	5,100
						150.0	35.9	6,100	6,000	5,800	5,600	155.0	37.4	5,200	5,100	4,900	4,700
Reeves		3	2	2	2	Reeves		3	2	2	2	Reeves		3	2	2	2
200' Boom						210' Boom						220' Boom					
360° Rated Load (lbs)						360° Rated Load (lbs)						360° Rated Load (lbs)					
Load Radius (ft)	Boom Angle (deg.)	0 Degree Machine List	1 Degree Machine List	2 Degree Machine List	3 Degree Machine List	Load Radius (ft)	Boom Angle (deg.)	0 Degree Machine List	1 Degree Machine List	2 Degree Machine List	3 Degree Machine List	Load Radius (ft)	Boom Angle (deg.)	0 Degree Machine List	1 Degree Machine List	2 Degree Machine List	3 Degree Machine List
34.4	81.4	50,000*				35.9	81.4	50,000*				37.4	81.4	48,200*			
36.0	80.9	50,000*				36.0	81.4	50,000*				38.0	81.2	47,800*			
38.0	80.4	50,000*				38.0	80.8	50,000*				40.0	80.7	46,700*			
40.0	79.8	50,000*				40.0	80.3	50,000*				45.0	79.4	43,400			
45.0	78.3	44,000	34,200			45.0	78.9	43,800				50.0	78.1	37,400			
50.0	76.8	37,900	33,300			50.0	77.5	37,600				55.0	76.7	32,600			
55.0	75.4	33,000	30,400			55.0	76.1	32,800	29,200			60.0	75.4	28,600	25,700		
60.0	73.9	29,300	27,000	20,100		60.0	74.7	28,800	26,600			65.0	74.0	25,300	23,300		
65.0	72.4	26,000	24,200	19,600		65.0	73.2	25,700	23,700	17,800		70.0	72.7	22,700	20,800	15,800	
70.0	70.9	23,300	21,700	19,200	14,100	70.0	71.8	22,900	21,300	17,400		75.0	71.3	20,200	18,800	15,400	10,900
75.0	69.3	20,900	19,600	18,300	13,800	75.0	70.4	20,700	19,300	17,000	12,300	80.0	69.9	18,200	17,100	15,000	10,700
80.0	67.8	18,900	17,700	16,700	13,400	80.0	68.9	18,700	17,500	16,100	12,000	85.0	68.5	16,700	15,600	14,300	10,500
85.0	66.2	17,100	16,100	15,200	13,200	85.0	67.4	16,900	15,900	14,900	11,600	90.0	67.1	15,200	14,200	13,200	10,200
90.0	64.7	15,600	14,800	14,000	13,000	90.0	66.0	15,400	14,500	13,600	11,400	95.0	65.7	13,800	12,900	12,100	9,900
95.0	63.1	14,300	13,600	12,900	12,200	95.0	64.4	14,100	13,200	12,400	11,200	100.0	64.2	12,500	11,700	11,100	9,600
100.0	61.4	13,200	12,500	11,900	11,300	100.0	62.9	12,700	12,200	11,500	10,800	105.0	62.8	11,400	10,800	10,200	9,300
105.0	59.8	12,100	11,500	11,000	10,500	105.0	61.4	11,900	11,100	10,500	9,900	110.0	61.3	10,500	9,900	9,300	8,700
110.0	58.1	11,200	10,600	10,100	9,600	110.0	59.8	10,800	10,200	9,600	9,100	115.0	59.8	9,700	9,100	8,500	7,900
115.0	56.4	10,300	9,800	9,300	8,800	115.0	58.2	9,900	9,300	8,800	8,400	120.0	58.3	8,800	8,200	7,700	7,200
120.0	54.7	9,400	9,000	8,500	8,100	120.0	56.6	9,000	8,600	8,100	7,700	125.0	56.7	7,900	7,500	7,000	6,500
125.0	52.9	8,800	8,200	7,800	7,400	125.0	54.9	8,300	7,800	7,400	7,000	130.0	55.2	7,200	6,800	6,300	5,900
130.0	51.1	7,900	7,500	7,100	6,800	130.0	53.2	7,700	7,100	6,700	6,300	135.0	53.6	6,600	6,100	5,700	5,300
135.0	49.2	7,200	6,900	6,600	6,300	135.0	51.5	6,800	6,400	6,100	5,700	140.0	51.9	5,900	5,500	5,200	4,900
140.0	47.3	6,800	6,300	6,000	5,800	140.0	49.7	6,300	5,800	5,500	5,200	145.0	50.2	5,200	5,000	4,700	4,400
145.0	45.3	6,100	5,800	5,500	5,300	145.0	47.9	5,700	5,300	5,000	4,700	150.0	48.5	4,800	4,500	4,300	4,000
150.0	43.2	5,700	5,300	5,000	4,800	150.0	46.1	5,200	4,800	4,500	4,200	155.0	46.8	4,400	4,100	3,900	3,600
155.0	41.1	5,000	4,800	4,600	4,400	155.0	44.1	4,600	4,300	4,100	3,800						
160.0	38.8	4,600	4,400	4,200	4,000	160.0	42.1	4,100	3,900	3,700	3,400						
165.0	36.5	4,100	4,000	3,800	3,600												
Reeves		2	2	2	2	Reeves		2	2	2	2	Reeves		2	2	2	2

Refer to notes on page 38.

CK1200G-2

SPECIFICATIONS

Barge

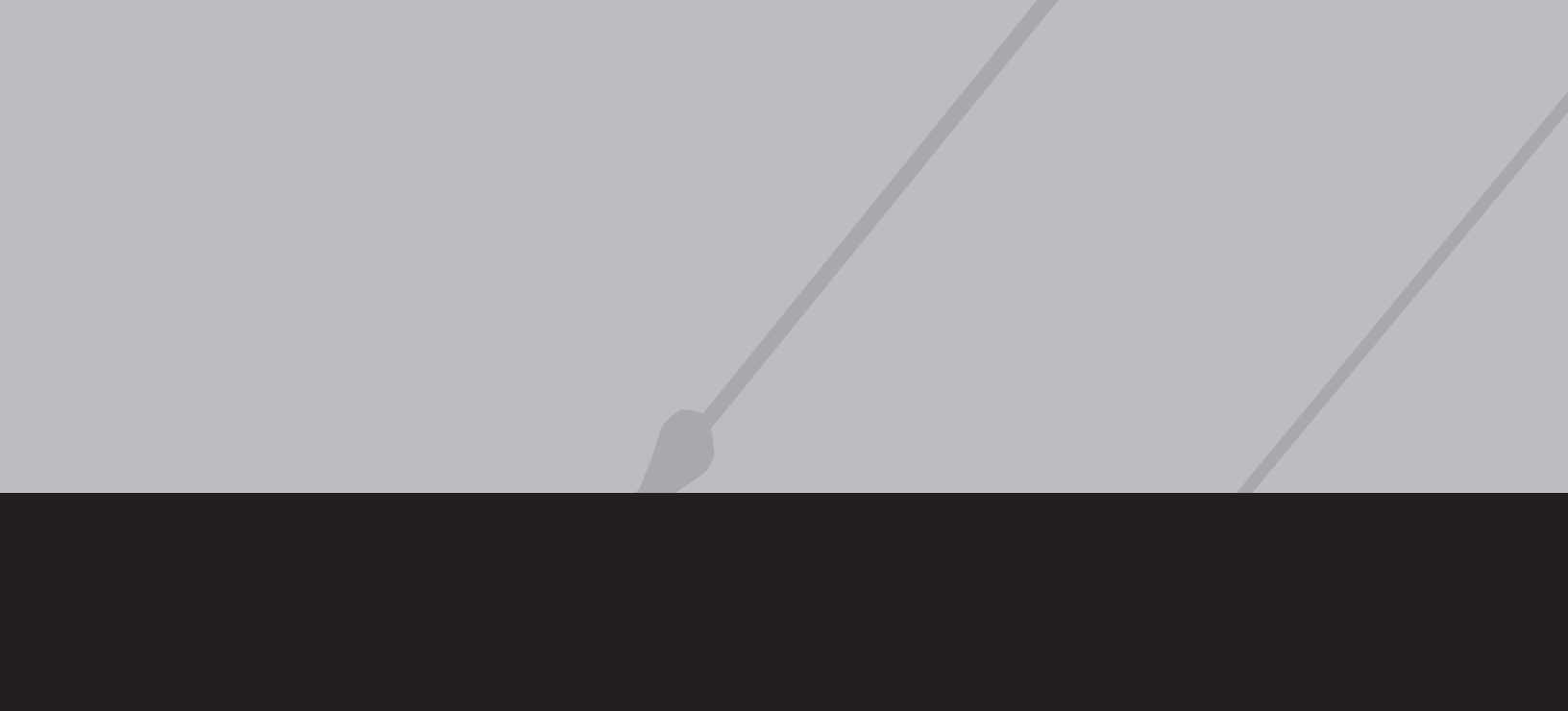
5 Counterweights (76,300 lbs) - 2 Carbody weights (14,300 lbs) - Crawlers in extended position.

230' Boom																	
		360° Rated Load (lbs)															
Load Radius (ft)	Boom Angle (deg.)	0 Degree Machine List	1 Degree Machine List	2 Degree Machine List	3 Degree Machine List												
38.9	81.4	43,200*															
40.0	81.1	42,700*															
45.0	79.9	40,100*															
50.0	78.6	37,000															
55.0	77.3	32,100	24,800														
60.0	76.0	28,400	24,100														
65.0	74.7	25,100	22,600														
70.0	73.4	22,200	20,500	14,000													
75.0	72.1	20,000	18,500	13,700													
80.0	70.8	18,000	16,700	13,400	9,400												
85.0	69.5	16,300	15,100	13,100	9,100												
90.0	68.2	14,700	13,700	12,600	8,700												
95.0	66.8	13,400	12,600	11,700	8,500												
100.0	65.4	12,300	11,500	10,700	8,300												
105.0	64.1	11,200	10,400	9,700	8,100												
110.0	62.7	10,100	9,400	8,800	7,800												
115.0	61.3	9,200	8,500	8,000	7,300												
120.0	59.8	8,300	7,700	7,200	6,700												
125.0	58.4	7,400	7,000	6,500	6,000												
130.0	56.9	6,800	6,300	5,800	5,400												
135.0	55.4	6,100	5,600	5,200	4,800												
140.0	53.9	5,500	5,000	4,700	4,300												
145.0	52.3	4,800	4,500	4,200	3,900												
150.0	50.7	4,400	4,000	3,800	3,500												
Reeves		2	2	2	2												

Refer to notes on page 38.

NOTES

This image shows a single sheet of white paper with horizontal ruling lines. The lines are evenly spaced and run across the width of the page. There are no margins, text, or other markings on the paper.



Note: This catalog may contain photographs of machines with specifications, attachments and optional equipment not certified for operation in your country. Please consult KOBELCO for those items you may require. Due to our policy of continual product improvements all designs and specifications are subject to change without advance notice.

Copyright by KOBELCO CONSTRUCTION MACHINERY CO., LTD. No part of this catalog may be reproduced in any manner without notice.

KOBELCO CONSTRUCTION MACHINERY CO., LTD.

Inquiries To:

17-1, Higashigotanda 2-chome, Shinagawa-ku, Tokyo 141-8626 JAPAN

Tel: +81-3-5789-2130 Fax: +81-3-5789-3372

URL: <http://www.kobelcocm-global.com/>

KOBELCO CONSTRUCTION MACHINERY U.S.A. INC.

22370 Merchants Way, Katy, Texas 77449, USA

Tel: +1-713-888-8430

URL: <http://www.kcmu-cranes.com/>