

RATED LIFTING CAPACITIES IN POUNDS

34 ft. - 60 ft. BOOM

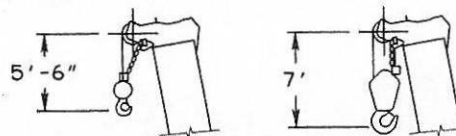
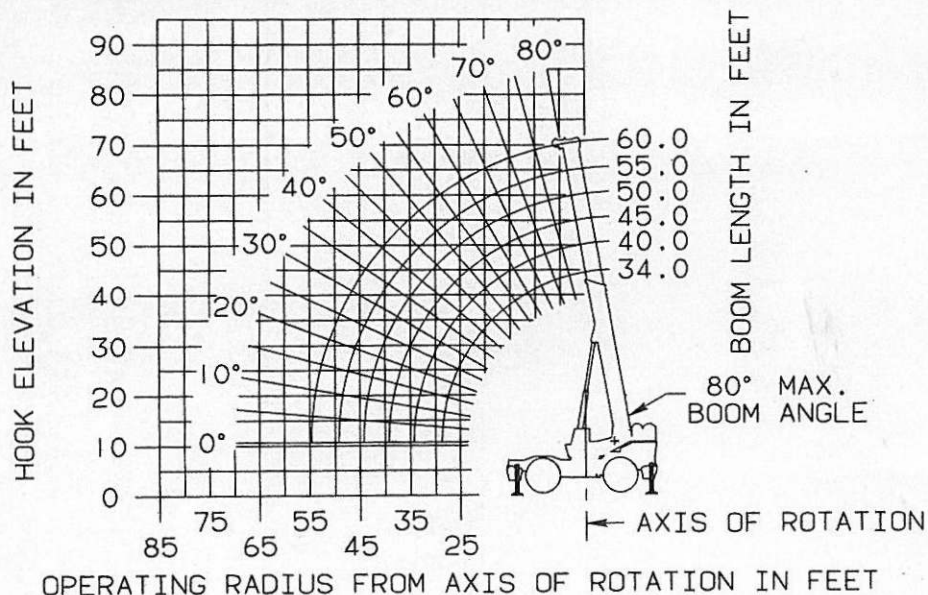
ON OUTRIGGERS - 360°

Radius in Feet	Main Boom Length in Feet					
	34	40	45	50	55	60
10	80,000 (65)	80,000 (68.5)	80,000 (71.5)	80,000 (73.5)	80,000 (75)	80,000 (76.5)
12	80,000 (61)	80,000 (65.5)	80,000 (68.5)	80,000 (71)	80,000 (73)	80,000 (74.5)
15	80,000 (55)	80,000 (60.5)	80,000 (64.5)	80,000 (67)	80,000 (69.5)	79,000 (71.5)
20	80,000 (43.5)	80,000 (52)	80,000 (57)	80,000 (60.5)	75,000 (64)	70,000 (66.5)
22	73,000 (38.5)	73,000 (48)	73,000 (53.5)	73,000 (58)	70,000 (61.5)	65,000 (64.5)
25	62,200 (30)	62,200 (41.5)	62,200 (48.5)	62,200 (53.5)	60,000 (57.5)	58,000 (61)
30		50,000 (28.5)	50,000 (39)	50,000 (46)	50,000 (51)	48,000 (55.5)
31			48,000 (37)	48,000 (44.5)	48,000 (50)	44,000 (54)
35			39,500 (27)	39,500 (37)	39,500 (44)	39,500 (49.5)
40				31,600 (25.5)	31,600 (35.5)	31,600 (42.5)
45					25,800 (24.5)	25,800 (34.5)
50						21,500 (24.5)

NOTE: Boom angles are in degrees.

A6-829-008831A

RANGE DIAGRAM (UNLADEN BOOM) D6-829-008721



DIMENSIONS ARE FOR GROVE FURNISHED HOOK BLOCK AND OVERHAUL BALL, WITH ANTI-TWO BLOCK ACTIVATED.

ON RUBBER CAPACITIES

29.5 x 25 (28 ply) TIRES

Radius in Feet	Stationary Capacity	Stationary Capacity	Pick&Carry Cap. Up to 2.5 MPH
	Defined Arc (3) Over Front	360° Arc	Boom Centered (7) Over Front
10	72,000 (a)	56,400 (e)	69,700 (a)
12	64,100 (a)	46,850 (f)	60,600 (b)
15	54,000 (a)	36,900 (f)	50,200 (d)
20	43,450 (a)	23,650 (f)	38,200 (d)
25	35,700 (c)	16,750 (f)	30,100 (f)
30	26,100 (d)	12,500 (f)	22,150 (f)
35	20,100 (e)	9,480 (f)	18,500 (f)
40	16,000 (f)		15,600 (f)
45	13,000 (f)		13,000 (f)
50	10,700 (f)		10,700 (f)

A6-829-008832

Max. Permissible Boom Lengths:

(a) 34 ft. (d) 50 ft.
(b) 40 ft. (e) 55 ft.

NOTES TO RUBBER CAPACITIES

		Main Boom 60 ft.
Front	Min. boom angle (deg.) for indicated length	0
(No load)	Max. boom length (ft.) at 0 deg. boom angle	60
360 Deg.	Min. boom angle (deg.) for indicated length	0
(No load)	Max. boom length (ft.) at 0 deg. boom angle	60

- Capacities are in pounds and do not exceed 75% of tipping loads as determined by test in accordance with SAE J765 OCT80.
- Capacities are applicable to machines equipped with 29.5 x 25 (28 PR) bias ply tires, at 75 psi cold inflation pressure.
- Defined Arc - Over front includes 6° on either side of longitudinal centerline of machine.
- Capacities are applicable only with machine on firm level surface.
- Axle lockouts must be functioning before lifting on rubber. (Check automatic lockout system for proper functioning: Refer to "Operation and Maintenance Manual" for description of a properly functioning axle lockout system.)
- All rubber lifting depends on proper tire inflation and condition. Capacities must be reduced for lower tire inflation pressures. Damaged tires are hazardous to safe operation of crane.
- For pick and carry operation, boom must be centered over front of machine, mechanical swing lock engaged and load restrained from swinging. When handling loads in the structural range with capacities close to maximum ratings, travel must be reduced to creep speeds.
- Creep - not over 200 ft. of movement in any 30 min. period and not exceeding 1 mph.