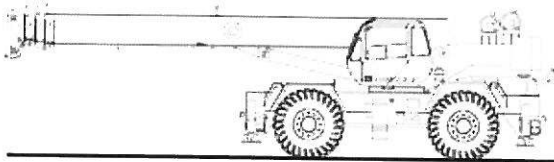




RT500-1 SERIES

**rough terrain crane
specifications**



STANDARD BOOM EQUIPMENT

BOOM

35-110 ft. (10.67-33.53 m), four section full power boom. Telescoping is mechanically synchronized with single lever control. The synchronization system consists of a single telescope cylinder and high strength leaf chains to extend and retract the third section and the tip section. The boom is a high-strength four plate design, welded inside and out with anti-friction slide pads. Boom side plates are made with stamped impressions to reduce weight and increase strength.

OPTIONAL BOOM EQUIPMENT

JIBS

Jibs feature easy installation/stowage through use of spear type stowage system. Jibs utilize a single metallic sheave mounted on anti-friction bearing. Jibs are quickly offsettable at 0°, 15°, or 30° by relocating two pins.

32 ft. (9.68 m) side stow swing-on one-piece lattice type jib. Maximum tip height is 146 ft. (44.50m).

33-57 ft. (10.15-17.30 m) side stow swing-on lattice type jib. Jib is extendible to 57 ft. (17.30 m) by means of a 25 ft. (7.62 m) manual pull-out tip section, roller supported for ease of extension. Maximum tip height is 170 ft. (51.82 m).

Stub head allows removal of pull-out from 33-57 ft jib, allowing it to function as a 32' swing-on with improved chart at longer radii when extra jib length is not required.

A single boom hoist cylinder provides for boom elevation of -4 to 76 degrees. Maximum tip height 115 ft (35.05 m).

BOOM HEAD

Welded to fourth section of boom. Five or six metallic load sheaves and two idler sheaves mounted on heavy duty, anti-friction bearings. Quick reeving boom head. Provision made for side-stow jib mounting.

AUXILIARY BOOM HEAD

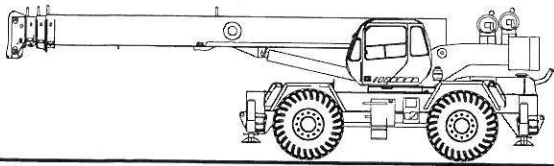
Removable auxiliary boom head has single metallic sheave mounted on anti-friction bearing. Removable pin-type rope guard for quick reeving. Installs on main boom peak only. Removal is not required for jib use.

HOOK BLOCK

Five or six metallic sheaves on anti-friction bearings with hook and hook latch. Quick reeving design does not require removal of wedge and socket from rope.

HOOK & BALL

7 ton (6.3 mt) top swivel ball with hook and hook latch.



STANDARD UPPERSTRUCTURE EQUIPMENT

UPPERSTRUCTURE FRAME

All welded one-piece structure fabricated with high tensile strength alloy steel. Counterweight is bolted to frame.

TURNTABLE CONNECTION

Swing bearing is a single row, ball type, with internal teeth. The swing bearing is bolted to the revolving upperstructure and to the carrier frame.

SWING

A hydraulic motor drives a double planetary reduction gear for precise and smooth swing function. Swing speed (no load) is 2.0 rpm.

SWING BRAKE

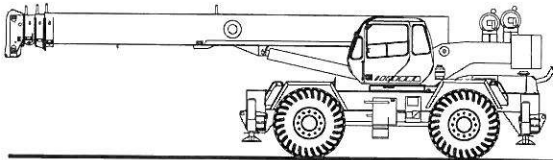
Heavy duty multiple disc swing brake is mechanically actuated from operator's cab by foot pedal. Brake may be locked on or used as a momentary brake. Air operated 360° mechanical house lock is standard.

RATED CAPACITY INDICATOR

Rated Capacity Indicator with visual and audible warning system and automatic function disconnects. Second generation pictographic display includes: boom radius, boom angle, boom length, allowable load, actual load, and percentage of allowable load registered by bar graph. Operator settable alarms provided for swing angle, boom length, boom angle, tip height, and work area exclusion zone. Anti-two block system includes audio/visual warning and automatic function disconnects.

OPERATOR'S CAB

Environmental cab with all steel construction, optimum visibility, tinted safety glass throughout, and rubber floor matting is mounted on vibration absorbing pads. The cab has a sliding door on the left side, framed sliding window on the right side, hinged tinted all glass skylight and removable front windshield to provide optimum visibility of the load open or closed. Acoustical foam padding



STANDARD CARRIER EQUIPMENT

CARRIER CHASSIS

Chassis is Terex designed with four-wheel drive and four-wheel steer (4X4X4). Has box-type construction with reinforcing cross members, a precision machined turn table mounting plate and integrally welded outrigger boxes. Decking has anti-skid surfaces, including between the frame rails lockable front tool storage compartment, and access steps and handles on the left and right sides and on all four corners.

AXLES AND SUSPENSION

Rear axle is a planetary drive/steer type with 10.5 in (0.26m) of total oscillation. Automatic oscillation lockouts that engage when the superstructure is swung 10° in either direction. Front axle is a planetary drive/steer type, rigid mounted to the frame for increased stability.

insulates against sound and weather. The deluxe six-way adjustable seat is equipped with a mechanical suspension and includes head and arm rests.

CONTROLS

All control levers and pedals are positioned for efficient operation. Armrest mounted dual axis controls for winch(s), swing, and boom elevation, Winch rotation indication incorporated into control handles. Armrest swings up to improve access and egress. Vernier adjustable hand throttle included. Steering column mounted turn signal, wiper, and shift controls. Switches include ignition, engine stop, lights, horn, roof window wiper, hot air defroster, steering mode, parking brake, outriggers, 360° house lock. Horn and winch speed shift switches are mounted in the levers. Foot control pedals include swing brake, boom telescope, service brake and accelerator.

INSTRUMENTATION AND ACCESSORIES

In-cab gauges include air pressure, bubble level, engine oil pressure, fuel, engine temperature, voltmeter, transmission temperature, and transmission oil pressure. Indicators include low air, high water temperature, low oil pressure, high transmission temperature and low coolant level audio/visual warning, hoist drum rotation indicator(s), and Rated Capacity Indicator. Accessories include fire extinguisher; light package including headlights, tail light, brake lights, directional signals, four-way hazard flashers, dome light, and back-up lights with audible back-up alarm; windshield washer/wiper; skylight wiper; R.H. and L.H. rear view mirrors; dash lights; and seat belt. Circuit breakers protect electrical circuits.

HYDRAULIC CONTROL VALVES

Valves are mounted on the rear of the upperstructure and are easily accessible. Valves have electric/hydraulic operators and include one pressure compensated two spool valve for boom elevation and telescope. One pressure compensated two spool valve for main and auxiliary winch, and one single spool valve for swing. Quick disconnects are provided for ease of installation of pressure check gauges.

OPTIONAL EQUIPMENT

Auxiliary Winch • Heater/Defroster • Hydraulically powered Air Conditioner with or without hydraulic heater • LP or Diesel Heater/Defroster • Tachometer • Work Lights • Rotating Beacon •

STEERING

Hydraulic four-wheel full power steering for two-wheel, four-wheel coordinated, or four-wheel crab steer is easily controlled by steering wheel. A rear axle centering light is provided.

Turning radius to center of outside tire.

| | (standard tires) | (optional tires) |
|-------------|------------------|------------------|
| Two-wheel: | 40' 4" (12.3 m) | 40' 0" (12.2 m) |
| Four-wheel: | 23' 4" (7.1 m) | 23' 0" (7.0 m) |

TRANSMISSION

Range-shift type power-shift transmission with integral torque converter has neutral safety start, 6 speeds forward, and 6 speeds reverse provides wide ratio coverage. Automatic pulsating back-up alarm.

STANDARD CARRIER EQUIPMENT_(continued)

MULTI-POSITION OUT & DOWN OUTRIGGERS

Fully independent hydraulic outriggers may be utilized fully extended to 22 ft. (6.71 m) centerline to centerline, in their 1/2 extended position, or fully retracted for maximum flexibility. Easily removable aluminum floats, each with an area of 452 in² (2 919 cm²), stow on the outrigger boxes at their point of use. Complete controls and a sight leveling bubble are located in the operator's cab.

WHEELS & TIRES

Disc type wheels with full tapered bead seat rim. 150.50 in (3.82 m) wheelbase.

TIRES

Wide earthmover (E3) style tread tires provide life and flotation.
26.50x25, 26 P.R. - std.
21.00x25, 28 P.R. - opt.

HYDRAULIC SYSTEM

HYDRAULIC PUMPS

Three gear type pumps, one single and two in tandem, driven off the transmission. Combined system capability is 113.9 gpm (431 lpm). Includes pump disconnect on tandem pump.

Main and Auxiliary Winch Pump

55.3 gpm (209.3 lpm) @ 3,500 psi (246.1 kg/cm²)

Boom Hoist, Telescope Pump

39.1 gpm (148.0 lpm) @ 3,500 psi (246.1 kg/cm²)

Power Steering, Outrigger and Swing Pump

19.6 gpm (74.2 lpm) @ 2,500 psi (175 kg/cm²)

SERVICE BRAKES

Split system air over hydraulic brakes on all four wheels; 1 1/2" diameter disc dual caliper brakes on front wheels and single caliper brakes on rear axle.

PARKING BRAKE

Front axle equipped with spring-set, air released emergency/parking brake.

OPTIONAL EQUIPMENT

Immersion Heater • Pintle Hook (s) • Clearance Lights • Independent Rear Steering • Four Mode Rear Wheel Steer • 20,000 lb line pull front mounted winch

FILTRATION

Full flow oil filtration system with bypass protection includes a removable 60 mesh (250 micron) suction screen-type filter and 5 micron replaceable return line filter.

HYDRAULIC RESERVOIR

All steel, welded construction with internal baffles and diffuser. Provides easy access to filters and is equipped with an external sight level gauge. The hydraulic tank is pressurized to aid in keeping out contaminants and in reducing potential pump cavitation. Capacity is 112 gal (424 liters). Hydraulic oil cooler is standard.

MAIN WINCH SPECIFICATION

Hydraulic winch with bent axis piston motor and planetary reduction gearing provides 2-speed operation with equal speeds for power up and down. Winch is equipped with an integral automatic brake, grooved drum, tapered flanges, standard cable roller on drum, and an electronic drum rotation indicator.

| PERFORMANCE | LO-RANGE | HI-RANGE |
|----------------------------|-----------------------|-----------------------|
| Max. line speed (no load) | | |
| First Layer | 171 fpm (52.21 m/min) | 343 fpm (104.5 m/min) |
| Fifth layer | 248 fpm (75.6 m/min) | 496 fpm (151.2 m/min) |
| Max. line pull-first layer | 15,639 lbs (7,093 kg) | 7,298 lbs (3,310 kg) |
| Max. line pull-fifth layer | 10,827 lbs (4,911 kg) | 5,052 lbs (2,291 kg) |
| Permissible line pull | 11,250 lbs (5,102 kg) | |

| DRUM DIMENSIONS | DRUM CAPACITY |
|--|----------------------------------|
| 10.62 in (270 mm) drum diameter | Max. Storage: 939 ft (286.2 m) |
| 22.42 in (570 mm) length | 7th layer not a working layer |
| 20.0 in (508 mm) flange dia. | Max. Useable: 772 ft (235.3 m)* |
| Cable: 5/8" x 500 ft (16 mm x 152.4 m) | *Based on minimum flange |
| Cable type: 5/8" (16mm) 6x19 IWRC, | height above top layer to comply |
| XIPS, right regular lay, preformed. | with ANSI B30.5 |

OPTIONAL AUX. WINCH

Hydraulic 2-speed winch with bent axis piston motor, equal speed power up and down, planetary reduction with integral automatic brake, grooved drum with tapered flanges, drum roller, and rotation indicator.

| PERFORMANCE | |
|---------------------------|-----------------------|
| Max. line speed (no load) | |
| Fifth layer | 496 fpm (151.2 m/min) |
| Max. line pull | |
| First layer | 15,639 lbs (7,093 kg) |

DRUM DIMENSIONS AND CAPACITY

(Same as main winch)

OPTIONAL HOIST LINE

MAIN WINCH AND OPTIONAL AUXILIARY WINCH-5/8" (16mm) rotation resistant compacted strand 34x7. Min breaking strength 28.21 tons (25.59 mt).

ENGINE SPECIFICATIONS

| Make and Model | Cummins QSB185 |
|-------------------|----------------------------------|
| Type | 6 cylinder |
| Bore and Stroke | 4.02 x 4.72 in (102x120 mm) |
| Displacement | 360 cu in (5.9 l) |
| Rated HP | 185 hp (138 kw) @ 2400 rpm |
| Maximum HP | 190 hp (142 kw) @ 2300 rpm |
| Rated Torque | 548 lb•ft (743 N•m) @ 1400 rpm |
| Aspiration | turbocharged & charge air cooled |
| Air Filter | dry type |
| Electrical System | 12 volt |
| Alternator | 100 amp |
| Battery | (2) 12V-1600 CCA |
| Fuel Capacity | 80 gal (303 l) |

PERFORMANCE (Standard Engine)

| Trans- mission Gear | Drive | Forward Speed | Maximum Tractive Effort | Grade- ability @ Stall |
|---------------------------|---------|------------------|-------------------------------|------------------------------|
| Low-1 | 4-wheel | 1.4 mph | 102,809 lbs | >100.0% |
| Low-2 | 4-wheel | 3.0 mph | 49,473 lbs | 73.2% |
| Low-3 | 4-wheel | 8.2 mph | 18,097 lbs | 20.7% |
| High-1 | 2-wheel | 4.2 mph | 35,348 lbs | 45.7% |
| High-2 | 2-wheel | 8.8 mph | 16,957 lbs | 19.2% |
| High-3 | 2-wheel | 22.8 mph | 6,179 lbs | 5.6% |

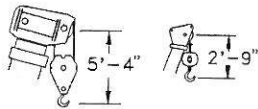
All performance data is based on a gross vehicle weight of 81,000 lbs (36 741 kg), 26.5x25 tires, 4x4 drive. Performance may vary due to engine performance. Gradeability data is theoretical and is limited by tire slip, stability, and oil pan design.



TEREX RT 555

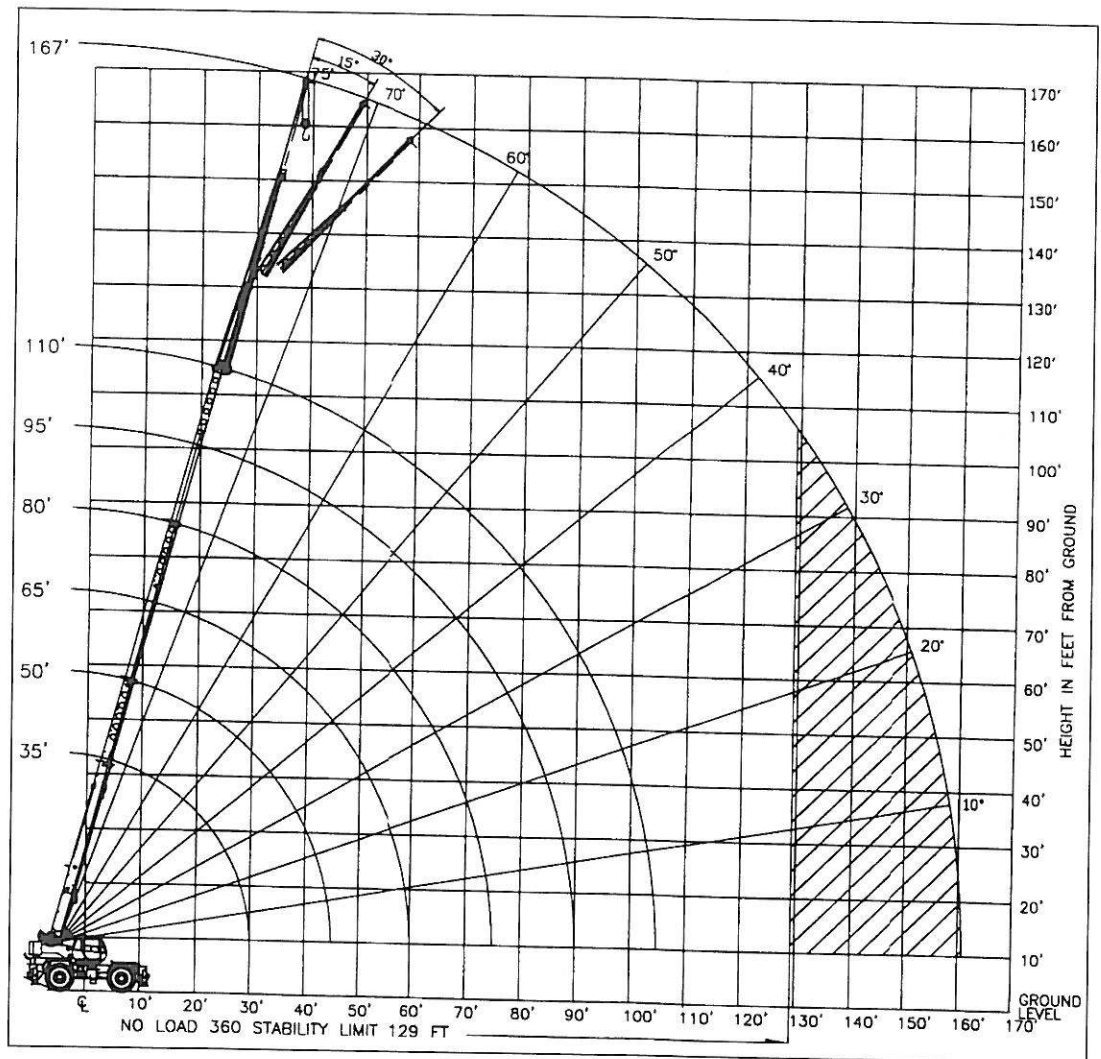
rough terrain crane
55 ton capacity

range diagram & lifting capacities

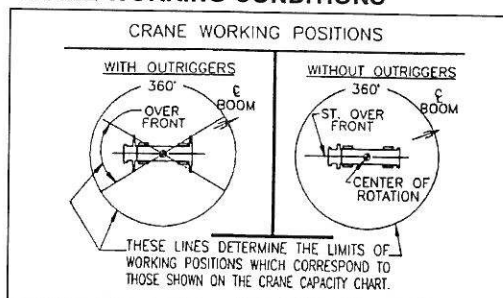


DIMENSIONS ARE FOR LARGEST FACTORY FURNISHED HOOK BLOCK AND HOOK & BALL, WITH ANTI-TWO BLOCK ACTIVATED

Range Diagram
(33' - 110' boom)



CRANE WORKING CONDITIONS



REDUCTION IN MAIN BOOM CAPACITY

All Jibs in Stowed Position _____ 0 Lbs.
Aux. Boom in Head Sheave _____ 100 Lbs.

HOOK BLOCK WEIGHTS

Hook & Ball _____ 239 Lbs.
Hook Block (4 Sheave) _____ 690 Lbs.
Hook Block (5 Sheave) _____ 888 Lbs.
Hook Block (6 Sheave) _____ 913 Lbs.

Lifting Capacities – Pounds (33' – 110' boom)

MODEL RT 555

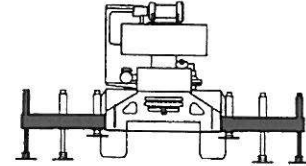
COUNTERWEIGHT:
W/AUX. WINCH 13,100 LBS.
W/O AUX. WINCH 14,200 LBS.
BOOM LENGTH 33-110 FT.
OUTRIGGER SPREAD 22 FT.

STABILITY PCT.
ON OUTRIGGERS 85%
ON TIRES 75%
PCSA CLASS 10-210

CAUTION: Do not use this specification sheet as a load rating chart. The format of data is not consistent with the machine chart and may be subject to change.

ON OUTRIGGERS - FULLY EXTENDED

| LOAD RADIUS (FT) | BOOM LENGTH 35 FT | | | BOOM LENGTH 50 FT | | | BOOM LENGTH 65 FT | | | LOAD RADIUS (FT) |
|------------------|-------------------|------------------------|-----------|-------------------|------------------------|-----------|-------------------|------------------------|-----------|------------------|
| | BOOM ANGLE (DEG) | LOADED OVER FRONT (LB) | 360° (LB) | BOOM ANGLE (DEG) | LOADED OVER FRONT (LB) | 360° (LB) | BOOM ANGLE (DEG) | LOADED OVER FRONT (LB) | 360° (LB) | |
| 10 | 66.7 | 110,000* | 110,000* | 73.9 | 60,100* | 60,100* | | | | 10 |
| 12 | 63.1 | 96,700* | 93,700* | 71.5 | 60,100* | 60,100* | | | | 12 |
| 15 | 57.5 | 75,200* | 73,100* | 67.9 | 60,100* | 60,100* | | | | 15 |
| 20 | 47.1 | 53,600* | 52,300* | 61.5 | 54,900* | 53,600* | 68.5 | 52,200* | 52,200* | 20 |
| 25 | 34.5 | 40,700* | 39,700* | 54.8 | 42,000* | 41,100* | 63.7 | 42,700* | 41,700* | 25 |
| 30 | 14.8 | 31,900* | 31,200* | 47.4 | 33,400* | 32,700* | 58.6 | 34,100* | 33,400* | 30 |
| 35 | ** | | | 39.0 | 27,300* | 26,700* | 53.3 | 28,000* | 27,400* | 35 |
| 40 | | | | 28.8 | 22,000 | 21,000 | 47.6 | 22,700 | 21,700 | 40 |
| 45 | | | | 12.4 | 17,400 | 16,500 | 41.3 | 18,300 | 17,400 | 45 |
| 50 | | | | ** | | | 34.1 | 14,900 | 14,200 | 50 |
| 55 | | | | | | | 25.2 | 12,300 | 11,700 | 55 |
| 60 | | | | | | | 10.9 | 10,100 | 9,600 | 60 |
| 65 | | | | | | | ** | | | 65 |
| 70 | | | | | | | | | | 70 |
| 75 | | | | | | | | | | 75 |
| 80 | | | | | | | | | | 80 |
| 85 | | | | | | | | | | 85 |
| 90 | | | | | | | | | | 90 |
| 95 | | | | | | | | | | 95 |
| 100 | | | | | | | | | | 100 |
| 105 | | | | | | | | | | 105 |
| 110 | | | | | | | | | | 110 |



**USE THESE CHARTS ONLY
WHEN ALL OUTRIGGERS
ARE FULLY EXTENDED**

ON OUTRIGGERS - FULLY EXTENDED

| LOAD RADIUS (FT) | BOOM LENGTH 80 FT | | | BOOM LENGTH 95 FT | | | BOOM LENGTH 110 FT | | | LOAD RADIUS (FT) |
|------------------|-------------------------|----------------|-----------|-------------------------|----------------|-----------|-------------------------|----------------|-----------|------------------|
| | LOADED BOOM ANGLE (DEG) | OVER REAR (LB) | 360° (LB) | LOADED BOOM ANGLE (DEG) | OVER REAR (LB) | 360° (LB) | LOADED BOOM ANGLE (DEG) | OVER REAR (LB) | 360° (LB) | |
| 10 | | | | | | | | | | 10 |
| 12 | | | | | | | | | | 12 |
| 15 | | | | | | | | | | 15 |
| 20 | 72.7 | 38,700* | 38,700* | | | | | | | 20 |
| 25 | 68.9 | 33,600* | 33,600* | 72.3 | 29,300* | 29,300* | | | | 25 |
| 30 | 65.0 | 29,600* | 29,600* | 69.1 | 25,900* | 25,900* | 72.1 | 22,900* | 22,900* | 30 |
| 35 | 61.0 | 26,500* | 26,500* | 65.9 | 23,000* | 23,000* | 69.3 | 20,500* | 20,500* | 35 |
| 40 | 56.8 | 23,000 | 22,000 | 62.5 | 20,800* | 20,800* | 66.5 | 18,400* | 18,400* | 40 |
| 45 | 52.4 | 18,600 | 17,700 | 59.1 | 18,800 | 17,900 | 63.6 | 16,500* | 16,500* | 45 |
| 50 | 47.7 | 15,300 | 14,600 | 55.5 | 15,500 | 14,800 | 60.7 | 14,900* | 14,900 | 50 |
| 55 | 42.7 | 12,700 | 12,100 | 51.7 | 12,900 | 12,300 | 57.7 | 13,000 | 12,400 | 55 |
| 60 | 37.1 | 10,700 | 10,100 | 47.8 | 10,900 | 10,400 | 54.5 | 11,000 | 10,500 | 60 |
| 65 | 30.6 | 9,000 | 8,500 | 43.6 | 9,200 | 8,800 | 51.3 | 9,400 | 8,900 | 65 |
| 70 | 22.6 | 7,500 | 7,100 | 39.0 | 7,900 | 7,400 | 47.8 | 8,000 | 7,600 | 70 |
| 75 | 9.8 | 6,300 | 5,900 | 33.9 | 6,700 | 6,300 | 44.2 | 6,800 | 6,500 | 75 |
| 80 | ** | | | 28.1 | 5,700 | 5,300 | 40.4 | 5,900 | 5,500 | 80 |
| 85 | | | | 20.8 | 4,800 | 4,400 | 36.1 | 5,000 | 4,700 | 85 |
| 90 | | | | 9.0 | 3,900 | 3,600 | 31.5 | 4,200 | 3,900 | 90 |
| 95 | | | | ** | | | 26.5 | 3,500 | 3,200 | 95 |
| 100 | | | | | | | 19.3 | 2,900 | 2,400 | 100 |
| 105 | | | | | | | 8.4 | 2,300 | 2,100 | 105 |
| 110 | | | | | | | ** | | | 110 |

** MAXIMUM CAPACITY AT 0 DEGREE BOOM ANGLE

| BOOM LENGTH 35 FT | | | BOOM LENGTH 50 FT | | | BOOM LENGTH 65 FT | | | BOOM LENGTH 80 FT | | | BOOM LENGTH 95 FT | | | BOOM LENGTH 110 FT | | |
|-------------------|-----------------|-----------|-------------------|-----------------|-----------|-------------------|-----------------|-----------|-------------------|-----------------|-----------|-------------------|-----------------|-----------|--------------------|-----------------|-----------|
| LOAD RADIUS (FT) | OVER FRONT (LB) | 360° (LB) | LOAD RADIUS (FT) | OVER FRONT (LB) | 360° (LB) | LOAD RADIUS (FT) | OVER FRONT (LB) | 360° (LB) | LOAD RADIUS (FT) | OVER FRONT (LB) | 360° (LB) | LOAD RADIUS (FT) | OVER FRONT (LB) | 360° (LB) | LOAD RADIUS (FT) | OVER FRONT (LB) | 360° (LB) |
| 31.2 | 20,900* | 20,800* | 46.2 | 12,600* | 12,700* | 61.2 | 8,200* | 8,200* | 76.2 | 5,400* | 5,400* | 91.2 | 3,500* | 3,300 | 106.17 | 2,100 | 1,800 |

Lifting Capacities – Pounds (33' – 110' boom)

MODEL RT 555

COUNTERWEIGHT:
W/AUX. WINCH 13,100 LBS.
W/O AUX. WINCH 14,200 LBS.
BOOM LENGTH 33-110 FT.
OUTRIGGER SPREAD 22 FT.

STABILITY PCT.
ON OUTRIGGERS 85%
ON TIRES 75%
PCSA CLASS 10-210

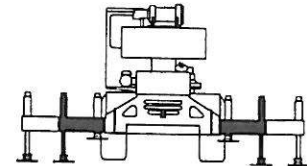
CAUTION: Do not use this specification sheet as a load rating chart. The format of data is not consistent with the machine chart and may be subject to change.

ON OUTRIGGERS - MID POSITION

| LOAD RADIUS (FT) | BOOM LENGTH 35 FT | | BOOM LENGTH 50 FT | | BOOM LENGTH 65 FT | | BOOM LENGTH 80 FT | | BOOM LENGTH 95 FT | | BOOM LENGTH 110 FT | | LOAD RADIUS (FT) |
|------------------|-------------------------|-----------|-------------------------|-----------|-------------------------|-----------|-------------------------|-----------|-------------------------|-----------|-------------------------|-----------|------------------|
| | LOADED BOOM ANGLE (DEG) | 360° (LB) | LOADED BOOM ANGLE (DEG) | 360° (LB) | LOADED BOOM ANGLE (DEG) | 360° (LB) | LOADED BOOM ANGLE (DEG) | 360° (LB) | LOADED BOOM ANGLE (DEG) | 360° (LB) | LOADED BOOM ANGLE (DEG) | 360° (LB) | |
| 10 | 66.7 | 87,600* | 73.9 | 60,100* | | | | | | | | | 10 |
| 12 | 63.1 | 71,400* | 71.5 | 60,100* | | | | | | | | | 12 |
| 15 | 57.5 | 55,200* | 67.9 | 56,500* | 73.2 | 57,200* | | | | | | | 15 |
| 20 | 47.1 | 38,900* | 61.5 | 40,200* | 68.5 | 40,800* | 72.7 | 38,700* | | | | | 20 |
| 25 | 34.5 | 25,800 | 54.8 | 27,300 | 63.7 | 27,900 | 68.9 | 28,200 | 72.3 | 28,400 | | | 25 |
| 30 | 14.8 | 17,700 | 47.4 | 19,400 | 58.6 | 19,900 | 65.0 | 20,200 | 69.1 | 20,400 | 72.1 | 20,600 | 30 |
| 35 | ** | | 39.0 | 14,200 | 53.3 | 14,900 | 61.0 | 15,200 | 65.9 | 15,400 | 69.3 | 15,500 | 35 |
| 40 | | | 28.8 | 10,700 | 47.6 | 11,400 | 56.8 | 11,800 | 62.5 | 11,900 | 66.5 | 12,100 | 40 |
| 45 | | | 12.4 | 8,000 | 41.3 | 8,800 | 52.4 | 9,200 | 59.1 | 9,400 | 63.6 | 9,500 | 45 |
| 50 | | | ** | | 34.1 | 6,800 | 47.7 | 7,200 | 55.5 | 7,500 | 60.7 | 7,600 | 50 |
| 55 | | | | | 25.2 | 5,200 | 42.7 | 5,700 | 51.7 | 5,900 | 57.7 | 6,000 | 55 |
| 60 | | | | | 10.9 | 3,800 | 37.1 | 4,400 | 47.8 | 4,700 | 54.5 | 4,800 | 60 |
| 65 | | | | | ** | | 30.6 | 3,300 | 43.6 | 3,600 | 51.3 | 3,800 | 65 |
| 70 | | | | | | | 22.6 | 2,400 | 39.0 | 2,700 | 47.8 | 2,900 | 70 |
| 75 | | | | | | | 9.8 | 1,600 | 33.9 | 1,900 | 44.2 | 2,100 | 75 |
| 80 | | | | | | | ** | | 28.1 | 1,300 | 40.4 | 1,500 | 80 |

** MAXIMUM CAPACITY AT 0 DEGREE BOOM ANGLE

| BOOM LENGTH 35 FT | | BOOM LENGTH 50 FT | | BOOM LENGTH 65 FT | | BOOM LENGTH 80 FT | | BOOM LENGTH 95 FT | | BOOM LENGTH 110 FT | |
|-------------------|-----------|-------------------|-----------|-------------------|-----------|-------------------|-----------|-------------------|-----------|--------------------|-----------|
| LOAD RADIUS (FT) | 360° (LB) | LOAD RADIUS (FT) | 360° (LB) | LOAD RADIUS (FT) | 360° (LB) | LOAD RADIUS (FT) | 360° (LB) | LOAD RADIUS (FT) | 360° (LB) | LOAD RADIUS (FT) | 360° (LB) |
| 31.2 | 16,100* | 46.2 | 7,300 | 61.2 | 3,500 | 76.2 | 1,400 | | | | |



**USE THESE CHARTS ONLY
WHEN ALL OUTRIGGERS ARE
PINNED IN MID POSITION**

Lifting Capacities – Pounds (33' – 110' boom)

MODEL RT 555

COUNTERWEIGHT
W/AUX. WINCH 13,100 LBS.
W/O AUX. WINCH 14,200 LBS.
BOOM LENGTH 33-110 FT.
OUTRIGGER SPREAD 22 FT.

STABILITY PCT.
ON OUTRIGGERS 85%
ON TIRES 75%
PCSA CLASS 10-210

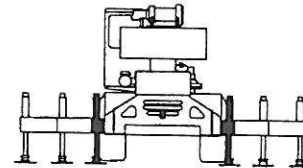
CAUTION: Do not use this specification sheet as a load rating chart. The format of data is not consistent with the machine chart and may be subject to change.

ON OUTRIGGERS - RETRACTED

| LOAD RADIUS (FT) | BOOM LENGTH 35 FT | | BOOM LENGTH 50 FT | | BOOM LENGTH 65 FT | | BOOM LENGTH 80 FT | | BOOM LENGTH 95 FT | | BOOM LENGTH 100 FT | | LOAD RADIUS (FT) |
|------------------|-------------------------|-----------|-------------------------|-----------|-------------------------|-----------|-------------------------|-----------|-------------------------|-----------|-------------------------|-----------|------------------|
| | LOADED BOOM ANGLE (DEG) | 360° (LB) | LOADED BOOM ANGLE (DEG) | 360° (LB) | LOADED BOOM ANGLE (DEG) | 360° (LB) | LOADED BOOM ANGLE (DEG) | 360° (LB) | LOADED BOOM ANGLE (DEG) | 360° (LB) | LOADED BOOM ANGLE (DEG) | 360° (LB) | |
| 10 | 66.7 | 67,000 | 73.9 | 60,100* | | | | | | | | | 10 |
| 12 | 63.1 | 46,800 | 71.5 | 48,000 | | | | | | | | | 12 |
| 15 | 57.5 | 30,900 | 67.9 | 32,100 | 73.2 | 32,600 | | | | | | | 15 |
| 20 | 47.1 | 17,900 | 61.5 | 19,300 | 68.5 | 19,700 | 72.7 | 20,000 | | | | | 20 |
| 25 | 34.5 | 11,200 | 54.8 | 12,600 | 63.7 | 13,200 | 68.9 | 13,400 | 72.3 | 13,600 | | | 25 |
| 30 | 14.8 | 7,000 | 47.4 | 8,500 | 58.6 | 9,200 | 65.0 | 9,500 | 69.1 | 9,600 | 72.1 | 9,700 | 30 |
| 35 | ** | | 39.0 | 5,700 | 53.3 | 6,400 | 61.0 | 6,800 | 65.9 | 6,900 | 69.3 | 7,100 | 35 |
| 40 | | | 28.8 | 3,700 | 47.6 | 4,400 | 56.8 | 4,800 | 62.5 | 5,000 | 66.5 | 5,100 | 40 |
| 45 | | | 12.4 | 2,100 | 41.3 | 2,900 | 52.4 | 3,300 | 59.1 | 3,500 | 63.6 | 3,700 | 45 |
| 50 | | | ** | | 34.1 | 1,700 | 47.7 | 2,100 | 55.5 | 2,400 | 60.7 | 2,500 | 50 |
| 55 | | | | | | | | | 51.7 | 1,400 | 57.7 | 1,600 | 55 |

** MAXIMUM CAPACITY AT 0 DEGREE BOOM ANGLE

| BOOM LENGTH 35 FT | | BOOM LENGTH 50 FT | | BOOM LENGTH 65 FT | | BOOM LENGTH 80 FT | | BOOM LENGTH 95 FT | | BOOM LENGTH 100 FT | |
|-------------------|-----------|-------------------|-----------|-------------------|-----------|-------------------|-----------|-------------------|-----------|--------------------|-----------|
| LOAD RADIUS (FT) | 360° (LB) | LOAD RADIUS (FT) | 360° (LB) | LOAD RADIUS (FT) | 360° (LB) | LOAD RADIUS (FT) | 360° (LB) | LOAD RADIUS (FT) | 360° (LB) | LOAD RADIUS (FT) | 360° (LB) |
| 31.2 | 6,000 | 46.2 | 1,700 | | | | | | | | |



USE THESE CHARTS WHEN ALL OUTRIGGER BEAMS ARE NOT IN EITHER THE MID OR FULLY EXTENDED POSITION

Lifting Capacities – Pounds (33' – 110' boom)

MODEL RT 555

COUNTERWEIGHT:
W/AUX. WINCH 13,100 LBS.
W/O AUX. WINCH 14,200 LBS.
BOOM LENGTH 33-110 FT.
OUTRIGGER SPREAD 22 FT.

STABILITY PCT.
ON OUTRIGGERS 85%
ON TIRES 75%
PCSA CLASS 10-210

CAUTION: Do not use this specification sheet as a load rating chart. The format of data is not consistent with the machine chart and may be subject to change.

SIDE STOW JIB ON FULLY EXTENDED OUTRIGGERS

| LOADED BOOM ANGLE (DEG) | 32 FT OFFSETABLE JIB/NO PULL OUT INSTALLED | | | | | | 33 FT OFFSETABLE JIB/PULL OUT RETRACTED | | | | | | 57 FT OFFSETABLE JIB | | | | | | LOADED BOOM ANGLE (DEG) |
|-------------------------|--|-----------|------------------------|-----------|------------------------|-----------|---|-----------|------------------------|-----------|------------------------|-----------|------------------------|-----------|------------------------|-----------|------------------------|-----------|-------------------------|
| | 0° OFFSET | | 15° OFFSET | | 30° OFFSET | | 0° OFFSET | | 15° OFFSET | | 30° OFFSET | | 0° OFFSET | | 15° OFFSET | | 30° OFFSET | | |
| | LOAD RADIUS (REF) (FT) | 360° (LB) | LOAD RADIUS (REF) (FT) | 360° (LB) | LOAD RADIUS (REF) (FT) | 360° (LB) | LOAD RADIUS (REF) (FT) | 360° (LB) | LOAD RADIUS (REF) (FT) | 360° (LB) | LOAD RADIUS (REF) (FT) | 360° (LB) | LOAD RADIUS (REF) (FT) | 360° (LB) | LOAD RADIUS (REF) (FT) | 360° (LB) | LOAD RADIUS (REF) (FT) | 360° (LB) | |
| 75 | 38 | 12,100* | 45 | 8,500* | 52 | 6,600* | 38 | 12,100* | 46 | 8,500* | 53 | 6,600* | 46 | 6,100* | 61 | 4,600* | 71 | 3,400* | 75 |
| 73 | 43 | 11,600* | 50 | 8,200* | 57 | 6,400* | 44 | 11,600* | 51 | 8,200* | 58 | 6,400* | 53 | 6,100* | 66 | 4,400* | 77 | 3,300* | 73 |
| 71 | 49 | 11,100* | 56 | 7,800* | 62 | 6,300* | 50 | 11,100* | 57 | 7,800* | 63 | 6,300* | 59 | 5,900* | 73 | 4,200* | 83 | 3,200* | 71 |
| 68 | 56 | 10,400* | 63 | 7,400* | 69 | 6,000* | 57 | 10,400* | 64 | 7,400* | 70 | 6,000* | 67 | 5,600* | 80 | 3,900* | 90 | 3,100* | 68 |
| 65 | 63 | 9,600* | 69 | 7,100* | 75 | 5,900* | 64 | 8,700* | 70 | 7,100* | 76 | 5,900* | 75 | 5,200* | 88 | 3,700* | 96 | 3,000* | 65 |
| 62 | 70 | 8,500* | 75 | 6,800* | 80 | 5,700* | 71 | 7,100* | 76 | 6,500* | 81 | 5,700* | 84 | 4,800* | 95 | 3,500* | 102 | 2,900* | 62 |
| 59 | 76 | 7,100* | 81 | 6,500* | 86 | 5,500* | 78 | 6,100* | 83 | 5,600* | 87 | 5,200* | 93 | 4,500* | 103 | 3,400* | 108 | 2,800* | 59 |
| 55 | 83 | 5,800* | 89 | 5,300* | 92 | 5,100* | 85 | 4,900* | 90 | 4,400* | 93 | 4,000* | 103 | 3,700* | 111 | 3,200* | 114 | 2,700* | 55 |
| 51 | 90 | 4,600* | 95 | 4,300* | 99 | 4,100* | 91 | 3,900* | 97 | 3,400* | 101 | 3,200* | 112 | 2,800* | 118 | 2,600* | 121 | 2,500* | 51 |
| 47 | 97 | 3,800* | 102 | 3,600* | 105 | 3,400* | 98 | 3,000* | 103 | 2,700* | 107 | 2,600* | 120 | 2,200* | 125 | 2,100* | 128 | 2,000* | 47 |
| 43 | 103 | 3,100* | 108 | 3,000* | 111 | 2,900* | 104 | 2,100* | 110 | 2,100* | 112 | 2,100* | 128 | 1,700* | 132 | 1,600* | 135 | 1,500* | 43 |
| 38 | 111 | 2,400* | 115 | 2,300* | 117 | 2,200* | 112 | 1,500* | 117 | 1,600* | 118 | 1,500* | 135 | 1,200* | 139 | 1,100* | 142 | 1,100* | 38 |
| 32 | 119 | 1,700* | 122 | 1,800* | 124 | 1,700* | 120 | 1,000* | 123 | 1,000* | 125 | 1,000* | 143 | 700* | | | | | 32 |
| 25 | 126 | 1,200* | 129 | 1,200* | | | | | | | | | | | | | | | 25 |
| 17 | 133 | 800* | | | | | | | | | | | | | | | | | 17 |

NOTES FOR JIB CAPACITIES

- A. For all boom lengths less than the maximum with a jib erected, the rated loads are determined by boom angle only in the appropriate column.
- B. For boom angle not shown, use the capacity of the next lower boom angle.
- C. Listed radii are for extended main boom only.

ON TIRES

| RADIUS (FT) | MAX BOOM LENGTH (FT) | 21:00 X 25 28PR | | | | 26.5 x 25-26PR | | | | RADIUS (FT) |
|-------------|----------------------|-----------------|---------------------|--------------|---------------------|----------------|---------------------|--------------|---------------------|-------------|
| | | STATIONARY | | PICK & CARRY | | STATIONARY | | PICK & CARRY | | |
| | | 360° | STRAIGHT OVER FRONT | 360° | STRAIGHT OVER FRONT | 360° | STRAIGHT OVER FRONT | 360° | STRAIGHT OVER FRONT | |
| 10 | 35 | 46,600* | 74,000* | 56,300* | 47,600* | 41,200* | 65,100* | 49,300* | 41,200* | 10 |
| 12 | 35 | 31,200 | 64,400* | 48,800* | 41,100* | 34,600* | 56,600* | 42,500* | 35,400* | 12 |
| 15 | 35 | 19,800 | 53,600* | 40,200* | 33,600* | 22,900* | 46,900* | 34,900* | 28,800* | 15 |
| 20 | 35 | 12,800 | 33,000 | 30,300* | 25,000* | 14,800 | 31,600 | 26,000* | 21,100* | 20 |
| 25 | 50 | 8,900 | 20,800 | 20,800 | 19,200* | 9,600 | 20,800 | 20,000* | 15,900* | 25 |
| 30 | 50 | 5,200 | 13,300 | 13,300 | 13,300 | 6,200 | 14,300 | 14,300 | 12,100* | 30 |
| 35 | 50 | 3,300 | 10,300 | 10,300 | 10,300 | 4,000 | 10,600 | 10,600 | 9,500* | 35 |
| 40 | 50 | 2,200 | 8,000 | 8,000 | 8,000 | 2,700 | 8,000 | 8,000 | 7,700* | 40 |
| 45 | 65 | 1,300 | 6,400 | 6,400 | 6,400 | 1,800 | 6,400 | 6,400 | 6,300* | 45 |
| 50 | 65 | | 5,200 | 5,200 | 5,200 | | 5,200 | 5,200 | 5,100* | 50 |
| 55 | 65 | | 4,200 | 4,200 | 4,200 | | 4,200 | 4,200 | 4,100* | 55 |
| 60 | 80 | | 3,200 | 3,200 | 3,200 | | 3,200 | 3,200 | 3,200 | 60 |
| 65 | 80 | | 2,400 | 2,400 | 2,400 | | 2,400 | 2,400 | 2,400 | 65 |

NOTES FOR ON TIRE CAPACITIES

- A. For Pick and Carry operations, boom must be centered over the front of the crane with swing brake and lock engaged. Use minimum boom point height and keep load close to ground surface.
- B. The load should be restrained from swinging. NO ON TIRE OPERATION WITH JIB ERECTED.
- C. Without outriggers, never maneuver the boom beyond listed load radii for applicable tires to ensure stability.
- D. Creep speed is crane movement of less than 200 Ft. (61m) in a 30 minute period and not exceeding 1.0 mph (1.6 km/h).
- E. Refer to General Notes for additional information.

MAXIMUM PERMISSIBLE HOIST LINE LOAD

| LINE PARTS | 1 | 2 | 3 | 4 | 5 | 6 | 7 | 8 | 9 | 10 |
|--|--------|--------|--------|--------|--------|--------|--------|--------|---------|---------|
| MIN & AUX. HOIST | 11,250 | 22,500 | 33,750 | 45,000 | 56,250 | 67,500 | 78,750 | 90,000 | 101,250 | 112,500 |
| WIRE ROPE: 5/8" ROTATION RESISTANT 34 x 7 COMPACTED STRAND, GRADE 2160, MINIMUM BREAKING STRENGTH - 28.21 TONS 5/8" 6X19 OR 6X37, XIPS, IWRC, PREFORMED RIGHT REGULAR LAY MINIMUM BREAKING STRENGTH - 20.6 TONS | | | | | | | | | | |

RECOMMENDED TIRE PRESSURE

| TIRE SIZE | STATIONARY | CREEP | 2 1/2 MPH | TRAVEL |
|------------------|------------|--------|-----------|--------|
| 21:00 X 25-28 PR | 85 PSI | 85 PSI | 85 PSI | 65 PSI |
| 26:50 X 25-26 PR | 65 PSI | 65 PSI | 65 PSI | 50 PSI |

GENERAL NOTES

GENERAL

1. Rated loads as shown on Lift Charts pertain to this machine as originally manufactured and equipped. Modifications to the machine or use of optional equipment other than that specified can result in a reduction of capacity.
2. Construction equipment can be hazardous if improperly operated or maintained. Operation and maintenance of this machine shall be in compliance with the information in the Operator's, Parts and Safety Manuals supplied with this machine. If these manuals are missing, order replacements from the manufacturer through your distributor.
3. These warnings do not constitute all of the operating conditions for the crane. The operator and job site supervision must read the OPERATORS MANUAL, CIMA SAFETY MANUAL, APPLICABLE OSHA REGULATIONS, AND SOCIETY OF MECHANICAL ENGINEERS (ASME) SAFETY STANDARDS FOR CRANES.
4. This crane and its load ratings are in accordance with POWER CRANE & SHOVEL ASSOCIATION, STANDARD NO. 4, SAE CRANE LOAD STABILITY TEST CODE J765A, SAE METHOD OF TEST FOR CRANE STRUCTURE J1063 AND APPLICABLE SAFETY CODE FOR CRANES, DERRICKS AND HOISTS, ASME/ANSI B30.5.

DEFINITIONS

1. **LOAD RADIUS** – The horizontal distance from the axis of rotation before loading to the center of the vertical hoist line or tackle with a load applied.
2. **LOADED BOOM ANGLE** – It is the angle between the boom base section and the horizontal, after lifting the rated load at the rated radius. The boom angle before loading should be greater to account for deflections. The loaded boom angle combined with boom length give only an approximation of the operating radius.
3. **WORKING AREA** – Areas measured in a circular arc about the centerline of rotation as shown in the diagram.
4. **FREELY SUSPENDED LOAD** – Load hanging free with no direct external force applied except by the hoist rope.
5. **SIDE LOAD** – Horizontal force applied to the lifted load either on the ground or in the air.
6. **NO LOAD STABILITY LIMIT** – The stability limit radius shown on the range diagrams is the radius beyond which it is not permitted to position the boom, when the boom angle is less than the minimum shown on the applicable load chart, because the machine can overturn without any load.
7. **BOOM SIDE OF CRANE** – The side of the crane over which the boom is positioned when in an OVER SIDE working position.

SET-UP

1. Crane load ratings are based on the crane being leveled and standing on a firm, uniform supporting surface.
2. Crane load ratings on outriggers are based on all outrigger beams being fully extended or in the case of partial extension ratings mechanically pinned in the appropriate position, and the tires free of the supporting surface.
3. Crane load ratings on tires depend on appropriate inflation pressure and the tire conditions. Caution must be exercised when increasing air pressures in tires. Consult Operator's Manual for precautions.
4. Use of jibs, lattice-type boom extensions, or fourth section pullouts extended is not permitted for pick and carry operations.
5. Consult appropriate section of the Operator's and Service Manual for more exact description of hoist line reeving.
6. The use of more parts of line than required by the load may result in having insufficient rope to allow the hook block to reach the ground.
7. Properly maintained wire rope is essential for safe crane operation. Consult Operator's Manual for proper maintenance and inspection requirements.
8. When spin-resistant wire rope is used, the allowable rope loading shall be the breaking strength divided by five (5), unless otherwise specified by the wire rope manufacturer.
9. Do not elevate the boom above 60° unless the boom is positioned in-line with the crane's chassis or the outriggers are extended. Failure to observe this warning may result in loss of stability.

OPERATION

1. **CRANE LOAD RATINGS MUST NOT BE EXCEEDED. DO NOT ATTEMPT TO TIP THE CRANE TO DETERMINE ALLOWABLE LOADS.**
2. When either radius or boom length, or both, are between listed values, the smaller of the two listed load ratings shall be used.
3. Do not operate at longer radii than those listed on the applicable load rating chart (cross hatched areas shown on range diagrams).
4. The boom angles shown on the Capacity Chart give an approximation of the operating radius for a specified boom length. The boom angle, before loading, should be greater to account for boom deflection. It may be necessary to retract the boom if maximum boom angle is insufficient to maintain rated radius.
5. Power telescoping boom sections must be extended equally.
6. Rated loads include the weight of hook block, slings, and auxiliary lifting devices. Their weights shall be subtracted from the listed rated load to obtain the net load that can be lifted.
When lifting over the jib the weight of any hook block, slings, and auxiliary lifting devices at the boom head must be added to the load.
When jibs are erected but unused add two (2) times the weight of any hook block, slings, and auxiliary lifting devices at the jib head to the load.
7. Rated loads do not exceed 85% on outriggers or 75% on tires, of the tipping load as determined by SAE Crane Stability Test Code J765a. Structural strength ratings in chart are indicated with an asterisk (*).
8. Rated loads are based on freely suspended loads. No attempt shall be made to drag a load horizontally on the ground in any direction.
9. The user shall operate at reduced ratings to allow for adverse job conditions, such as: Soft or uneven ground, out of level conditions, high winds, side loads, pendulum action, jerking or sudden stopping of loads, hazardous conditions, experience of personnel, two machine lifts, traveling with loads, electric wires, etc., (side pull on boom or jib is hazardous). Derating of the cranes lifting capacity is required when wind speed exceeds 20 MPH. The center of the lifted load must never be allowed to move more than 3' feet off the center line of the base boom section due to the effects of wind, inertia, or any combination of the two.
**Use 2 feet off the center line of the base boom for a two section boom, 3 feet for a three section boom, or 4 feet for a four section boom.
10. The maximum load which can be telescoped is not definable, because of variations in loadings and crane maintenance, but it is permissible to attempt retraction and extension if load ratings are not exceeded.
11. Load ratings are dependent upon the crane being maintained according to manufacturer's specifications.
12. It is recommended that load handling devices, including hooks, and hook blocks, be kept away from boom head at all times.
13. **FOR TRUCK CRANES ONLY:** 360° capacities apply only to machines equipped with a front outrigger jack and all five (5) outrigger jacks properly set. If the front (5th) outrigger jack is not properly set, the work area is restricted to the over side and over rear areas as shown on the Crane Working Positions diagram. Use the 360° load ratings in the overside work areas.
14. Do not lift with outrigger beams positioned between the fully extended and intermediate (pinned) positions.
15. Truck Cranes not equipped with equalizing (bogie) beams between the rear axles may not be used for lifting "on tires". Truck Cranes equipped with equalizing beams and rear air suspension should "dump" the air before lifting "on tires".

CLAMSHELL, MAGNET, AND CONCRETE BUCKET SERVICE

1. Maximum boom length for clamshell and magnet service is 50 feet.
2. Weight of clamshell or magnet, plus contents are not to exceed 6,000 pounds or 90% of rated lifting capacities, whichever is less. For concrete bucket operation, weight of bucket and load must not exceed 90% of rated lifting capacity.

WE RESERVE THE RIGHT TO AMEND THESE SPECIFICATIONS AT ANY TIME WITHOUT NOTICE. THE ONLY WARRANTY APPLICABLE IS OUR STANDARD WRITTEN WARRANTY APPLICABLE TO THE PARTICULAR PRODUCT AND SALE. WE MAKE NO OTHER WARRANTY, EXPRESSED OR IMPLIED.

TEREX CRANES

106 12th Street S.E.
Waverly, IA 50677-9466 USA
(319) 352-3920 • FAX: (319) 352-5727
E-mail: inquire@terexwaverly.com

www.terexlift.com